

5 April 2024

Maraetai Beach School farewells principal



Maraetai Beach School principal Mark Keenan.

After nine years at the helm, Maraetai Beach School principal Mark Keenan will take up a new principal role at Sunnyhills School in Pakuranga next term.

Mark says it was a tough decision to leave Maraetai, but that after nine years he needed a new challenge.

“I am very proud of where the school is today and felt like I needed a change. This school has been a massive part of my life, I’ve seen it grow from just over 200 students to 500 students today, from 11 classes to 30. I’m leaving the school in a really good place and I just felt like it was the right time for me and my family.”

He is proud of the school’s achievements during his time, not least of which is the latest glowing report from the Education

Review Office which gave the school a top ranking.

“I do believe we provide a very high quality education for our children. I’m very proud of the school culture - that’s probably the biggest thing for me. The way the school is at the heart of the community. We have such a wonderful staff, and wonderful school community, they are so supportive - they’re amazing. And I’m really, really proud of our kids. They’re such a neat bunch.”

Mark says that while the school has grown, it has managed to retain its close connection to the community. This was highlighted during his biggest challenge, the Covid pandemic.

CONTINUED ON PAGE 3

LICENSED TO SELL

Ian 027 285 9314
Jenny 0204 000 2564
Nicolette 027 702 9157
Mark 027 523 2245

#1 Top Salesperson
Beachlands Branch 2023

BARFOOT & THOMPSON

SPECIAL AGENTS
003

We’re here for **you**
and all your property
management needs!

BARFOOT & THOMPSON
PROPERTY MANAGEMENT

Beachlands
09 536 4990

RayWhite.
BEACHLANDS

Your Premium **Choice**
in Property Management

Ray White Beachlands
Lighthouse Real Estate Limited
Licensed (REAA 2008)

P : (09) 536 7011
E : beachlands.nz@raywhite.com
W : rwbeachlands.co.nz
A : 81 Second View Avenue, Beachlands



Visit us
226 North Road,
Clevedon 2248
Ph: 09 292 8656

Email: office@mortontimber.co.nz
Web: www.mortontimber.co.nz
Facebook: mortontimber.clevedon

**WE ARE NOT JOKING AROUND THIS APRIL
CHECK THIS OUT!**

150X50 H4 ROUGH SAWN SG8
4.8M Lengths only \$6.20 a lineal metre plus gst

150X125 H4 POST/SLEEPERS
2.4M Lengths \$38.00 per post plus gst

150X125 H4 POST/SLEEPERS
1.8M Lengths \$29.00 per post plus gst

12MM BAND SAWN FACE H3.1
PLY 2400X1200 \$55 plus gst per sheet
PLY 2700X1200 \$65 plus gst per sheet

19MM DD GRADE H3
PLY 2400X1200 \$85 plus gst per sheet

OPENING HOURS
MONDAY - THURSDAY 7:30AM TO 5:00PM
FRIDAY 7:30AM TO 4:30PM & SATURDAY 7:30AM TO NOON

INSIDE: Rugby Club’s golf fundraiser p3

Council plans to upgrade assets at beach esplanades p4

RayWhite.
Second Generation Real Estate
EXPERIENCE the difference...
Ray White Beachlands
Lighthouse Real Estate Limited
Licensed (REAA 2008)
P : (09) 536 7011 or (021) 400 979
E : beachlands.nz@raywhite.com
W : rwbeachlands.co.nz
A : 81 Second View Avenue, Beachlands

EmbroidMe.
East Tamaki
We Supply & Brand
Uniforms & Promotional Products
Embroidery, Printing, Lettering, Dye Sublimation and more...
Cnr Smales and Springs Rds, East Tamaki - 09 265 0300

**Great Smiles.
Better Health.**
Offering a caring, professional
service for the whole family
including general, restorative and
cosmetic dentistry.
(09) 292 907 | smile@ahdental.co.nz
52 Papakura-Clevedon Road
www.ahdental.co.nz
ANTHONY HUNT
Dental
GREAT SMILES • BETTER HEALTH

Deadlines: Display advertising - 5pm Thursday. Classified and News - midday Friday

advertising@pctimes.co.nz | www.pctimes.co.nz

Pohutukawa Coast Times

GET IN TOUCH

E: info@pctimes.co.nz
W: www.pctimes.co.nz
F: facebook.com/pctimes
A: PO Box 5, Beachlands 2147

EDITOR

Leanne Chamberlin
 021 426 207
 leanne@pctimes.co.nz

ADVERTISING

Melody Cutfield
 021 0261 4467
 advertising@pctimes.co.nz

CLASSIFIEDS

advertising@pctimes.co.nz

DELIVERY/DISTRIBUTION

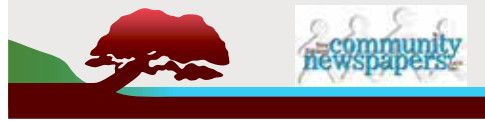
distribution@pctimes.co.nz

ACCOUNTS

Pam Rutherford
 accounts@pctimes.co.nz

The Pohutukawa Coast Times is distributed weekly to 6500 homes and businesses in: Whitford, Brookby, Beachlands, Maraetai, Clevedon, Ardmore, Alfriston, Kawakawa Bay, Orere Pt, Hunua, Paparimu

Member of the New Zealand Community Newspapers Association



The PC Times 20 years ago:
 2 April 2004: Watch out for slipper roads, says local police constable.



Weekly Tide Chart

Day	Low	High	Direction
5 Fri	4:46am ▲ 3.0m	10:50am ▼ 0.9m	↔
6 Sat	5:47am ▲ 3.2m	11:51am ▼ 0.8m	↔
7 Sun	1:20am ▼ 0.7m	6:44am ▲ 3.3m	↔
8 Mon	12:16am ▼ 0.6m	6:39am ▲ 3.4m	↔
9 Tue	1:08am ▼ 0.5m	7:31am ▲ 3.5m	↔
10 Wed	1:58am ▼ 0.4m	8:22am ▲ 3.6m	↔
11 Thu	2:48am ▼ 0.5m	9:12am ▲ 3.5m	↔

MARINE FORECAST - VHF CHANNEL 19
 AUCKLAND FORECAST - 0900 999+ YOUR STD

Pine Harbour Electrical
 Unit 1A Pine Harbour Marina
 P: 536-6177
 W: www.phe.co.nz

Guest editorial by MP for Papakura Rt Hon Judith Collins

March has been an exciting month. A personal highlight was that I entered the Inner Bar in a ceremony at the Auckland High Court. This saw me officially become a King's Counsel. I am deeply honoured by my appointment made by the Governor General with the concurrence of the Solicitor General on recommendation from the Prime Minister and my peers.

The Inner Bar ceremony required that I pledge to "well and truly serve all those for whom I may be called upon to act in the rank of King's Counsel to the best of my knowledge and ability, with due respect to the law and usages of New Zealand and mindful always of my obligations to the Court." This I was most humbled to do.

I am grateful to all who have supported me on my life and career journeys to this point - my late parents Percy and Jessie Collins, my family, my colleagues and my friends.

I promise to continue to serve you and our country to the best of my ability in all my portfolios and as a King Counsel.

Government Policy Statement on Transport

Recently, local Auckland Councillor Daniel Newman and I spent time discussing the Government Policy Statement on Transport (GPSoT).

Daniel, like me, is a strong supporter of the Mill Road redevelopment which is included in the GPSoT and we are excited that the project is being prioritised.

This project will be part of the \$20 billion investment in transport and infrastructure being committed to over the next three years, making this one of the biggest investments in transport and infrastructure in New Zealand's history.

The public transport part of the GPSoT will provide targeted investment of more than \$4 billion over the next three years for public transport projects and services.

After years of cancelled and delayed transport projects, our Government will deliver the efficient and safe transport system that New Zealanders have voted for.

Auckland Council through Auckland Transport is responsible for local roads so you can make complaints or suggestions directly to them using this link:-

<https://www.aucklandcouncil.govt.nz/report-problem/Pages/report-a-problem.aspx>

Or you can visit a service desk in your local library to have your questions answered and to lodge complaints.

Health targets will deliver better outcomes for New Zealanders

The coalition Government's commitment to five key health targets will drive better

outcomes for all New Zealanders by:

- Introducing a faster cancer treatment target that requires 90 per cent of patients to receive cancer management within 31 days of the decision to treat.
- 95 per cent of children to be fully immunised at 24 months of age.
- Requiring 95 per cent of patients to be admitted, discharged or transferred from an Emergency Department within six hours.
- Requiring 95 per cent of patients to wait less than four months for a First Specialist Appointment (FSA).
- Requiring 95 per cent of patients to wait less than four months for elective treatment.

In addition, the coalition Government are:

- Increasing breast screening eligibility for 70 to 74-year-olds. In Counties Manukau there will be a new mobile screening unit.
- Funding two new cancer drugs for breast cancer and acute myeloid leukaemia

Our Prime Minister Christopher Luxon, my Parliamentary colleagues and I are part of a results driven Government and we will continue to work hard to meet the goals and targets that we set ourselves in our election policies and prioritised in the 100-day campaign.

I hope you enjoyed the Easter Break with your family and friends,
Judith

The views expressed in the Pohutukawa Coast Times Guest Editorial column are not necessarily the views of the editor or publisher.

MALMAKS WATER SHOP

CLEAN WATER

WE ARE NOW AN AUTHORISED DEALERSHIP FOR

DAB & GRUNDFOS

REPAIRS & MAINTENANCE ON ALL PUMP BRANDS

STOCK AND SELL

- Pumps • UV Lamps
- All in one pump box
- Carbon & Sediment Filters
- Salt • Bore Softeners

PH: 530 8872

Whitford Village

www.malmakswater.com.co.nz

- DAB • GRUNDFOS • GREENWAY • VIQUA
- ATLAS FILTRI • ALPINE PURE • STERILIGHT
- PURETEC • DAVEY • HANSEN

SERVICING POHUTUKAWA COAST FOR OVER 10 YEARS

SUTCLIFFE MATSON
LAW

LAWYERS SERVING THE POHUTUKAWA COAST

38A Wakelin Road, Beachlands

Available Monday - Friday, by appointment

photo credit: Tio&Co Photography

BREANNA FULLER AND **BRADEN MATSON**
BCOM/LLB (HONS) | ASSOCIATE MA/LLB | DIRECTOR

Conveyancing, Refinancing, Wills,
Powers of Attorney, Business Transactions
Family & Commercial Law
and other general legal needs.

We are happy to meet after hours
at your home for your convenience.

Ph: 09 279 8351 or Braden: 021 327 030
braden@smlaw.net.nz | breanna@smlaw.net.nz
www.sutcliffematsonlaw.net.nz

Pohutukawa Coast
PRESBYTERIAN CHURCH
"A Voice of Positive Christianity"

"You matter!
Believe it."

- Mark -

Every Sunday 9am

Plus Kids' Programme
Minister: Mark Chapman

For more information contact Lyn:
lyn.41buchanan@gmail.com

Playgroup Tues & Wed 9am - 12pm

Food bank 027 304 4998 Phone or text

5 Jacobs Way, Maraetai

PRIMA

COLLISION REPAIRS

Complete panelbeating and car painting

East Tamaki: Unit B 154 Harris Rd, East Tamaki, Auckland 09 274 4778
Manukau: 2/117 Kerrs Rd, Manukau, Auckland 09 268 9340

Golf day aims to drive home funds for rugby club



Golfers pictured enjoying a fun day out at last year's fundraising event.

Beachlands Maraetai Rugby Club will focus on a different genre of sport this month, as it hosts its annual golf fundraising event.

Last year's event, held in October, raised \$16,000 for the club and fundraising coordinator David Overend says he hopes this year's event will raise a similar amount.

This year 36 teams will tee off at Formosa on 19 April, playing Ambrose format over the 18-hole course. The event is nearly sold out, so David says people

should register soon if they want to avoid disappointment.

The golf will be followed by prize-giving and an auction. All funds raised will go to Beachlands Maraetai Rugby Club.

Businesses are invited to support the event by sponsoring one of the 18 holes on the course (\$200 per hole), and the club also seeks unique experiences and items as auction prizes.

For further information, contact fundraising@bmrc.co.nz.

Maraetai Beach School farewells principal

CONTINUED FROM PAGE 1

"I was so proud of staff, students and the school community through Covid. Our staff supported our students with their wellbeing and learning during that time - it was a challenge but the staff rose to that challenge and did extremely well. They were agile and flexible especially with hybrid learning. It was also a really difficult time for families, but we all supported each other. I found the community was very supportive of the school, and we were supportive of the community."

Mark says he would like to thank both the school community for their ongoing support during his time as leader, and the school staff who he describes as "amazing, they really are".

"I'd like to also give a special thanks to current and past Board of Trustee (BOT) members who do a wonderful job governing the school."

In turn, BOT chair Simone Beesley says the Board has received a lot of feedback from the community following Mark's resignation, from parents, families and staff who have spoken of the positive impact Mark has had on students and the wider Maraetai Beach School community. Many have spoken of his professionalism,

his welcoming manner and his passion for the school.

Simone says: "The Board congratulates Mark on his appointment and acknowledges the last 9 years that Mark has spent here at MBS. He has led the school with energy, enthusiasm and a commitment to continued improvement. He has done this while maintaining high expectations of himself, the staff, support staff and students."

"Mark has led the school through significant roll growth, the Covid-19 pandemic with associated lock downs, the construction of 12 new learning spaces in the new build and he has nurtured relationships with international students who have visited from China and Korea."

"We would like to extend our thanks to Mark's wife Kate and his wider whanau for their support of Mark and Maraetai Beach School during his time here."

Mark will be replaced in the interim by current deputy principal Steve Harper-Travers, who will take on the role of acting principal for term two, while the BOT goes through the process of recruiting a new principal who will start in term 3.

Mark would like to thank everyone for their support. "It has been the most rewarding time of my career and I look back with very fond memories."

OUR LADY STAR OF THE SEA CATHOLIC PARISH

We celebrate Mass at 4.30pm on the first Saturday of the month. On other Saturdays there will be Celebration of the Word with Holy Communion.

St Hilda's Church,
3 Wakelin Road, Beachlands

Visit our website for details
www.beachlandsc.com

GALBRAITHS LAWYERS

FOR PROFESSIONAL AND FRIENDLY ADVICE ON ALL LEGAL MATTERS

Family Law/Relationships
Employment Law
Buying & Selling Property and Businesses
Litigation Trusts
Wills & Estates

**CONTACT THE TEAM AT:
GALBRAITHS LAWYERS**
Units 1-3 Fencible Chambers
Corner Fencible Drive & Moore Street,
HOWICK VILLAGE
Ph: 535 4190

www.galbraiths.co.nz

Kinghans Accountants & Advisers.
also trading as Louw & Co.

your local accounting company

Serving Auckland's Howick and East Tamaki communities, Louw & Co is a friendly, approachable accounting practice that offers accountancy and advisory services.

SERVICES

business

- starting a new business
- tax advice
- bookkeeping & accounting
- financing
- management consulting
- succession planning

personal

- tax advice
- trusts
- asset structure
- annual compliance
- investment properties

22 Picton Street, Howick

Ph: (09) 533 8420 | Email: info@louwandco.co.nz | www.louwandco.co.nz

Howick FUNERAL HOME
New Zealand owned & operated since 1993

A privilege to care for your family

Every life is special, we understand that. Let us pay tribute to the life of your loved one and celebrate the unique way they have touched you, your family and those around you.

For a personal, professional service contact us today to discuss your options:
35 Wellington St, Howick | Phone 534 7300 | www.howickfuneralhome.nz

Council announces plan to upgrade assets at local beach esplanade reserves

A number of local esplanade reserves will benefit from some TLC over the coming months.

Auckland Council says that during a recent visit it was clear that some infrastructure was deteriorating at the reserves. Council has now agreed to renew these to reduce health and safety risks. Work will take place at the following locations between the end of March and June 2024:

Potts Road Esplanade Reserve, Whitford

Scope of works:

- Removing the existing bollards,

supply and install of new Future posts*

- Removing the existing gates, supply and installation of new gates
- Removing the existing retaining wall-fence barrier and rebuilding a new structure
- Renewing the signage and provision allowed to replace the existing bins.

Porterfield Esplanade Reserve, Whitford

Scope of works:

- Fencing/gate structures
- Renewing of existing fencing and gate structures and associated assets



Aerial view of Sunkist Bay, where works will soon be underway to replace degraded infrastructure. Photo / Auckland Council.

Sunkist Bay Reserve, Beachlands

Scope of works:

- Remove existing bollards and replace with Future posts around the reserve on Wakelin Road
- Remove existing post and rail near Nana Brown’s memorial seat
- Refurbish existing picnic seats
- Remove existing bin, supply and install new tilt bins (provisional).

- Remove existing picnic seats and replace with 2 x Portland picnic tables
- Remove existing bin and fountain, supply and install new tilt bins
- Remove existing park signage, reinstate ground in this area and grass seed
- Supply and install new park signage

Broomfields Reserve, Whitford

Scope of works:

- Remove existing bollards and replace with Future posts
- Supply and install new 100mm galvanised boom barrier arm
- Remove existing fence posts, wire supports and concrete foundations

Te Pene (Tracey’s Walk), Beachlands

Scope of works:

- Refurbish existing furniture and replace the bin (provisional).

* Future posts are environmentally friendly fence posts made from recycled plastic.

Shining Some Light

Are there things in your past that you are ashamed of and make you feel guilty.

Would you like to be free from guilt and shame and put the past behind you.

Did you know Jesus loves you and came to set you free and give you a fresh start.

DON'T MISS OUT 😊 CHECK HIM OUT

Just Listed

34 Quinns Road, Clevedon

7 🛏 5 🛏 Total Floor: 597 m² Land: 4.07 ha

Secluded Country living with Two Residences

In a peaceful rural setting amongst four hectares of native gardens, orchards and exotic trees this property truly delivers. Two substantial pine /cedar homes offer their own perspectives and enjoy total privacy from one another. Suitable for multi-generational families or for home and income.

The main house has a generous interior of 344m². The open plan kitchen and dining area look out to the extensive lawns and manicured gardens. On the ground floor, the master bedroom opens out onto the wrap-around veranda with two other bedrooms on this level and an office. Upstairs, a large bedroom with a high pitched ceiling offers a private retreat and sweeping views.

The main house opens out to the divine swimming pool area with plenty of space to entertain family and friends. The second house is completely separate to the main house. Clever landscaping means the two homes, although not far apart are not visible to one another. This second house is also expansive, especially for a second dwelling of 253m², with three bedrooms and 2.5 bathrooms. A full kitchen, two living rooms, double carport. In addition there is an artist studio and workshop that offers additional amenity for those with a creative or DIY aspect, plus a large barn with road frontage.

The east paddock offers grazing and stock yards and the west paddock is developed as a park like setting with exotic trees recently planted internally and surrounded by a native border. Existing fencing could be upgraded here to return to grazing land should that be the preference. The owners have cared for and maintained the buildings and services on this property to the highest level so this is truly a case of move in and enjoy the country life!

With its convenient location just 40 minutes from Auckland’s CBD, this property offers both seclusion and accessibility to the growing village of Clevedon and the city beyond.

OPEN HOME: Sunday’s 31 March - 28 April 12:00 - 12:45pm and Twilight Viewing: Wednesday 3 April 6:00 - 7:00 p.m.

DEADLINE SALE: Set Date of Sale 30 April 2024 at 4:00pm (unless sold prior)

VIEW: nzsothebysrealty.com/SED10019

CAROLYN HANSON 027 780 8006 MARKUS BLUM 027462 8080 SARAH RICHARDSON 021 711 156
 carolyn.hanson@nzsir.com markus.blum@nzsir.com sarah.richardson@nzsir.com



Each office is independently owned and operated. Diamond Group Realty Limited (licensed under the REAA 2008) MREINZ.

New Zealand | Sotheby's INTERNATIONAL REALTY



Coastal Cat Rescue 'Cat of the Month'

Meet Kiki. This adorable wee girl is approximately 5 months old but very much a kitten. Kiki was trapped while desexing a family of cats and kittens. Kiki is sensitive, curious, gentle, chatty and is craving affection from her humans. She is a darling and super pretty. With a little bit of patience Kiki is going to be a fabulous addition to a laid back family with time to listen to her chatter and a toy on hand as she loves to play. Kiki is desexed, flea and worm treated, microchipped and will receive her first vaccine prior to joining her new family. An adoption donation applies to help us with the costs to provide the very best of care to this adorable kitten. PM to organize an "Application to Adopt" and to arrange to meet Kiki. If you would like to know more about this character, or enquire about the other adorable kittens we have in care, email bailifscourt@gmail.com or join Coastal Cat Rescue on Facebook and PM. Please include a little about yourself and the home you can offer a kitten.



BARFOOT THOMPSON & CO. LICENCED REAL ESTATE

Student Voice

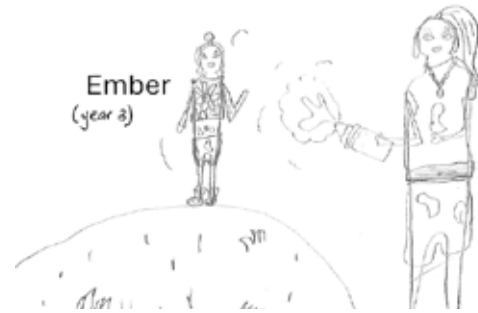
LOCAL STUDENTS' NEWS, VIEWS & LITERARY TALENT

This column features news, views and literary talents of students from Beachlands, Maraetai, Clevedon, Brookby, Hunua, Paparimu, Orere and Ardmore Schools.

One student featured each week will be presented with a certificate and a \$20 book voucher, thanks to Barfoot & Thompson's Beachlands and Whitford branches.

Orere School Fun Run

Evie's mum and Sam sprayed me and Evie and Lucy too, it was really fun when we got sprayed and colourful. When I had my shirt it was blue and red. I wasn't allowed to get in my car. I had to use a towel or I wouldn't be allowed to get in my car. If I did I would be grounded for two weeks.



Get the best protection you can before winter

The flu vaccine is free if you're over 65

It's also free for children and adults with certain underlying health conditions, including diabetes, heart and lung diseases, and mental health conditions.

To book your flu vaccine:

- visit BookMyVaccine.nz
- call the Vaccination Healthline on 0800 28 29 26
- contact your doctor, pharmacy or healthcare provider.

info.health.nz/flu

Learn how to propagate properly at local workshop



Beachlands' Community Garden will show people how to propagate plants at a workshop this Sunday 7 April.

Gardening expert Karen Titulaer has run a number of low key workshops at the Community Garden, covering topics like seed saving and building healthy soil. "They have been popular so we are doing a bigger workshop on 7 April where I will show people how to propagate plants and they will get to take away cuttings of lots of lovely plants like pink rosemary, figs and rose scented geranium," says Karen.

The Community Garden is a free resource for anyone in the community wanting to harvest fresh food, connect with other gardeners or learn how to grow their own food.

The Gardeners Club has run for nearly 2 years, and is introducing activities to share their love of growing including a seed and plant swap in spring and a propagation workshop in autumn. Propagating plants through cuttings is a cheap and quick way to expand your garden. The workshop will cover how to take cuttings and nurture them into healthy plants.

Details:

Propagation Workshop
7 April 2024 at 10am
Coastal Community Garden, 41 Third View Avenue, Beachlands

What to bring: Gardening gloves and clean secateurs or snips. Everything else will be provided.



Honouring and Celebrating Life

Our approach, philosophy and high standards are ideals we are proud to uphold. Our compassion, values and dedication when caring for the bereaved are just a few of the qualities that form the heart of Resthaven Funerals.



HOWICK. Cnr Picton & Walter MacDonald Sts | Ph. 533 7493
MANUREWA. 88 Great South Rd | Ph. 267 2530

www.resthavenfunerals.co.nz

MEMBER Funeral Directors ASSOCIATION OF NZ

Brigades called to large scrub fire

Crews from multiple fire brigades were called to a vegetation fire at Kawakawa Bay during Easter Weekend.

The fire, believed to be caused by an out of control burnoff, spread across an area of steep terrain measuring about 400m x 600m on Kawakawa Bay Coast Road.

Crews from Kawakawa Bay, Hunua, Clevedon, Orere, Beachlands, Papakura and further afield were called to the site early on Saturday afternoon and spent about 48 hours getting the fire under control and continuing to dampen down hot spots with the assistance of water tankers and helicopters.

St Hilda's and St. Mark's Anglican Church
3 Wakelin Rd, Beachlands



SERVICE
Sunday 9:30am

All Welcome



SET DATE OF SALE

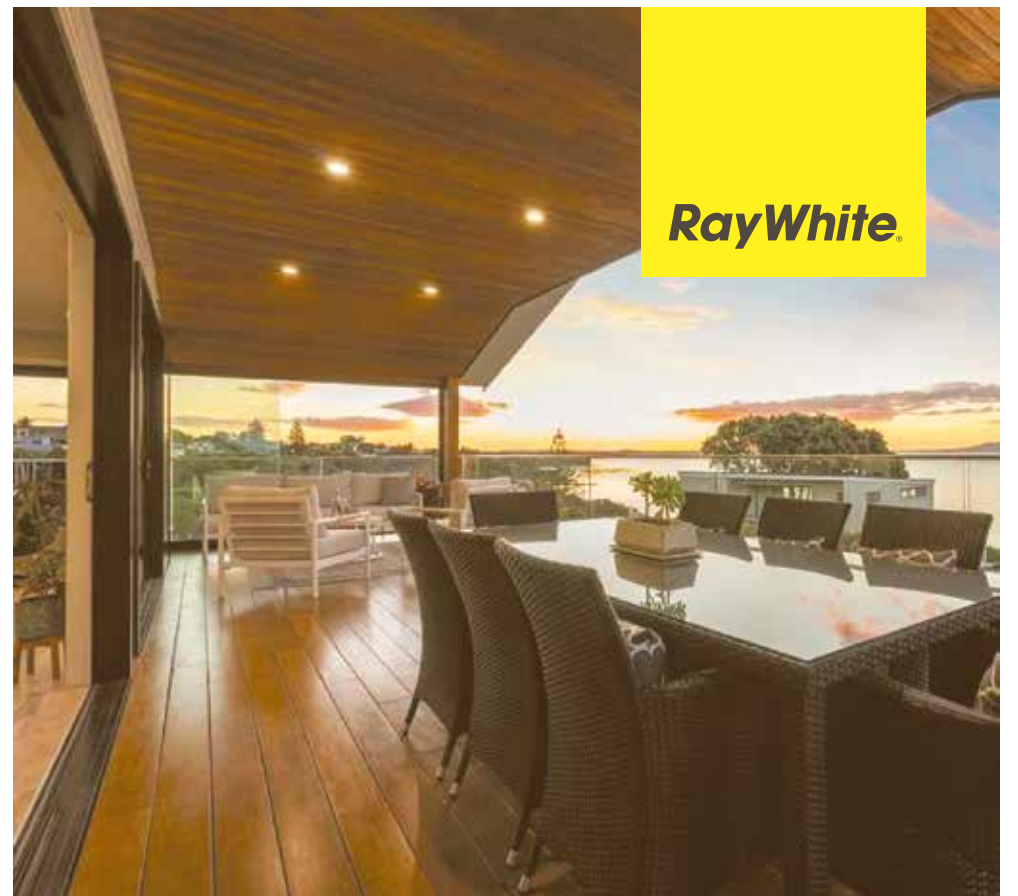
74 Craig Road, Maraetai

Ultimate Escape - If you've ever envisioned living by the beach, this superb home, meticulously rebuilt and redesigned, is an opportunity you won't want to miss.

Upon entering, you'll immediately notice the attention to detail. The impressive open-plan living, kitchen and dining area seamlessly flows onto the spacious covered balcony, offering breathtaking panoramic views from the Sky Tower to Rangitoto, the Hauraki Gulf to Waiheke and Omana Beach. Turn this dream into reality and book your viewing today!

rwbeachlands.co.nz/BCH30867

Lighthouse Real Estate Ltd Licensed (REAA 2008)



4 🚗 1 🍷 3 🚿 2 🛋️ 1 📖 6 📄 2 🏠 809 📏

Set Date of Sale

Closes 4:00 pm Thursday 11 April 2024
(Unless Sold Prior)

View

Saturday & Sunday
11:15 - 11:45 am



Brianne Bignell

021 400 979
brianne.bignell@raywhite.com



Paula Kirkman

021 0290 8007
paula.kirkman@raywhite.com

WHY WAIT?



Think award winning lifestyle

At Summerset, we're proud of what we offer, with our modern homes, outstanding facilities, welcoming communities, and excellent staff.

Now there are even more great reasons to choose Summerset. We've been voted winner of the Reader's Digest Quality Service Award, and Aged Advisor People's Choice and Nationwide Group awards.

So, if you are contemplating village life, come and see for yourself at our upcoming Open Day at **Summerset by the Park**. You'll get to meet some of the residents who happily call the village home and view the range of homes we have available*.

We'd love to share the Summerset lifestyle. We think it's gold!

Love the life you choose

Open Day

Wednesday 10 April, 10am – 2pm

Summerset by the Park

7 Flat Bush School Road, Manukau

09 277 1441 | manukau.sales@summerset.co.nz

summerset.co.nz/manukau

Summerset
RETIREMENT VILLAGES

*All Summerset homes are sold under a licence to occupy and are subject to availability. Summerset does not offer rental accommodation.



We're open!

The renovations are done, and your local Barfoot & Thompson are officially back in our Beachlands branch!



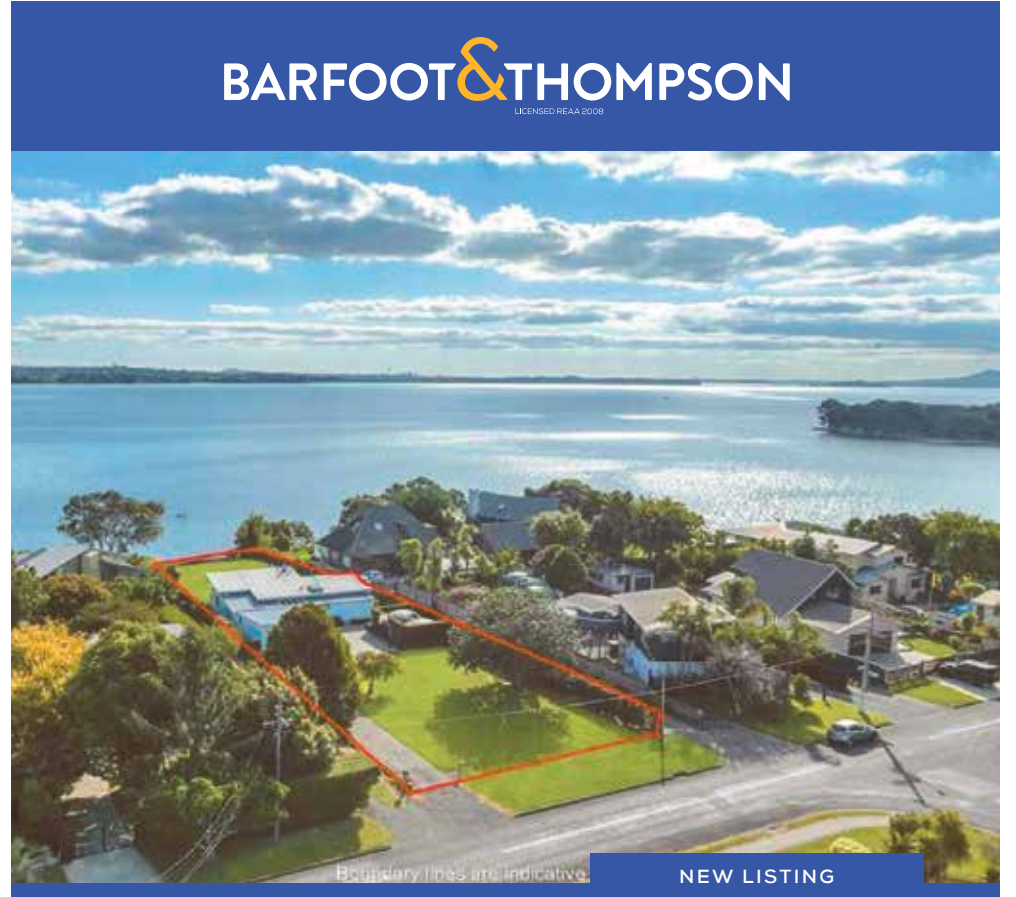
We're here for all your Real Estate and Property Management needs, so give our friendly team a call - or simply pop in to have a chat.

And if you need something printed or scanned, we're very happy to help out. It's a free service! - but if you'd like to make a donation, all proceeds go direct to Starship ★

BARFOOT & THOMPSON | Beachlands

42 Wakelin Road • 09 536 4990 • beachlands@barfoot.co.nz

Starship Five Star Partner



BARFOOT & THOMPSON
LICENSED REAA 6008

Boundary lines are indicative

NEW LISTING

BEACHLANDS
13 PURIRI ROAD

- 3
- 1
- 2
- 2
-

TENDER
4:00pm Wednesday 24th April (unless sold prior)

VIEWING
003 OPEN HOME: SAT & SUN 4:00-4:30pm

barfoot.co.nz/864758

OWN IT!

Discover this rare waterfront gem at 13 Puriri Road. With its expansive huge 2125m² waterfront section, breathtaking sea views, and potential for subdivision, this property offers both an idyllic locale and a lucrative investment opportunity not to be missed. Cherished for over 20 years by its current owners.

SPECIAL AGENTS 003
Ian, Jenny, Nicolette, Mark
Jenny Chandler - 0204 000 2564
Ian Boswell - 027 285 9314
Nicolette Hale - 0204 000 2564
i.boswell@barfoot.co.nz

FOOD & ENTERTAINMENT GUIDE

4 Traditional Pizzas and 4 Sides DELIVERED from \$59.90 ONLINE CODE 22861* Open: Sun-Thu 11am-9:30pm
*T&Cs apply. Fri & Sat 11am-10pm
Ph: 0800 30 40 50 or 09 951 3959
www.dominos.co.nz
E: beachlandsdom@gmail.com



THE FRANKLIN
TAPHOUSE & KITCHEN

Open 7 days from 12pm-late
Woodfired pizzas
Fri/Sat/Sun 12pm-late

BOOKINGS RECOMMENDED
Ph: 536 5978
www.thefranklinpub.co.nz

VINALTO

DINING • WEDDINGS • FUNCTIONS
424 Creightons Rd, Clevedon, Auckland 2582
PH 09 292 8845 • enquiries@vinalto.co.nz
OPEN: Thur and Fri 5pm - late
Saturday 12pm - late, Sunday 12pm -4pm



SUNKIST
BAR • KITCHEN

OPENING HOURS
Tuesday - Thursday: 3-10pm
Friday - Sunday: 12pm till late
027 208 6942
190 Jack Lachlan, Pine Harbour

Small sharing plates
Cocktails
Marina view

Ambrosia

(09) 536 4151
Monday to Friday 10:00am - 11:00pm
Saturday & Sunday 8:00am - 11:00pm
44 Third View Ave, Beachlands
The best of European Cuisine



BEACHLANDS CHARTERED CLUB

Pōhutukawa Coast's only not-for-profit Chartered Club since 1948

Open 7 days a week
Mon & Tues 4pm-Late
Weds-Sun 3pm-Late

2 Weekly Membership Draws
Fishing and 8 Ball Section
Fortnightly Quiz Nights
Free Pool & Darts
Kids Room
Gaming Lounge
Free* Function Hire

HALLERTAU CLEVEDON

26 CLEVEDON-KAWAKAWA RD, CLEVEDON, AUCKLAND — CLEVEDON@HALLERTAU.CO.NZ — 09 869 2989
OPEN — MON & TUE: CLOSED — WED & THU: 4PM-10PM — FRI & SAT: 12PM-10PM — SUN: 11AM-9PM

**ADVERTISE IN OUR FOOD & ENTERTAINMENT GUIDE,
JUST \$20/WEEK. EMAIL ADVERTISING@PCTIMES.CO.NZ**

PINOCCHIO
PIZZA, PASTA AND MORE

OPENING HOURS
Tuesday - Sunday: 5-9pm
For bookings or takeaway: 09 217 1684 | 021 2144790
44 Kouka Road, Beachlands

pinocchionz Pinocchio Pizza Pasta & more



Community Calendar

Listings in our Community Calendar are free. Activities must be not-for-profit and have a community focus. For listings, email info@pctimes.co.nz - include activity, day of week, time, venue and contact details.

Weekly events

MONDAY

- **BABY CHAT** 10.30-12:00pm, Beachlands Baptist Church, Age 0 to 1 yrs.
- **CASUAL BADMINTON:** 7.30-9pm, Te Puru Centre, \$6. Ph:536 5360.
- **ST JOHNS YOUTH:** 6-7.30pm, St Hilda's Church, Wakelin Road.
- **CASUAL TABLE TENNIS:** 7.30-9pm, Te Puru, \$6.
- **SOCIAL TENNIS:** Adults beginners/intermediate 7-9pm Te Puru. Stephen 021 217 7587.
- **KEAS:** scouts for ages 6-8 - 5:30-6:30 Te Puru Scout Hall, tepuru@group.scouts.nz
- **CUBS:** scouts for ages 8-11 - 5:30-6:30 Te Puru Scout Hall, tepuru@group.scouts.nz

TUESDAY

- **COASTAL PLAYGROUP** 5 Jacobs Way, Maraetai. 9am-12pm. Bubs till 5 yrs. Sarah 022 082 6432.
- **KOKAKO VOLUNTEER DAY:** 8.15am-3.30pm, Northern Hunua Ranges. Ruth 021 950 915.
- **RUMMIKUB** 1-4pm, Te Puru Centre \$2. Bernadette 021 170 9350.
- **NATTER N STITCH** 12-3pm, Log Cabin, Sunkist Bay. Gill 021 204 6647
- **MARAETAI (LAWN) BOWLING CLUB:** 1pm, Te Pene Road. Tues, Thurs, Sat. Derek 536 4626.
- **CASUAL BADMINTON:** 9:30-11:30am, Te Puru Centre, FREE.
- **TABLE TENNIS** - 1:30pm-3:30pm, Te Puru Centre - Free
- **BASKETBALL:** All ages, Te Puru Centre. Email pcbasketballclub@gmail.com. 027 775 5320.
- **MEN'S AND INTERMEDIATE/ADVANCED LADIES TENNIS:** 7-9pm, Te Puru. Stephen 021 217 7587
- **HOUSIE/BINGO** 7.30pm, Beachlands Chartered Club, \$15. Ph: 536 6233.
- **POHUTUKAWA COAST CHILDREN'S CHOIR:** For primary school ages, 3.30pm - 5pm, at Ray White 'The Shed', contact Rhianon 0212160224.
- **POHUTUKAWA COAST YOUTH CHOIR:** For intermediate and high school ages, 5.15pm - 6.30pm, at Ray White 'The Shed', contact Rhianon 0212160224
- **POHUTUKAWA COAST COMMUNITY CHOIR:** 7.15 - 8.45pm. coastchoir.com
- **THE GOOD KNIGHTS SOCIAL CHESS** 7:00 - 8:30pm. Beachlands Baptist Church, 59 Third View Ave. Runs fortnightly (usually 1st & 3rd Tues of the month). All ages and skill levels welcome. Contact 022 656 1154 for more info.

WEDNESDAY

- **JP SERVICE:** 5.00-6.30pm, Beachlands Library.
- **COASTAL MAINLY MUSIC** 9am-12pm, for 0-5yrs, 5 Jacobs Way, Maraetai. Sarah 022 082 6432.
- **SENIOR CIRCUIT:** 9am \$6 Te Puru Centre. First Wednesday of the month BYO plate for coffee after.
- **CASUAL BADMINTON:** 10am-12pm, Te Puru Centre. All welcome. FREE.
- **SENIOR STRETCH & STRENGTH:** 9-10am, Beachlands Memorial Hall, \$12 per month (8 sessions).
- **PEST CONTROL DAY:** Southern Hunua Ranges, Ruth 021 950 915.
- **MASTERS SWIMMING:** Wed/Sat, carpool from Bchlds-Mtai. president@manukaumasters.co.nz.
- **"CREATIVE WINGS" ART FOR SENIORS:** 10am-12pm, St Hilda's Church, Beachlands.
- **CLEVEDON FIRESIDE BRIDGE CLUB:** 10.15am, Clevedon Anglican. Lessons avail. Pauline 299 7433.
- **SCOTTISH COUNTRY DANCE CLUB:** 7.30-9.30pm, Hillpark Primary School Hall. Heather 267 6375.
- **MAHJONG:** 10am-12pm, Te Puru, \$2.
- **QUIZ NIGHT:** 7.30pm. Teams of up to 6, \$5pp Every second week Beachlands Chartered Club 536 6233
- **BADMINTON GAMES:** 8pm, Clevedon Hall, BYO racquet, shuttlecocks provided, \$3. Rebecca 021 1109 675
- **WORN AGAIN OP SHOP,** 9.30am-12pm, The Cottage, 5 K Bay-Orere Rd, Kawakawa Bay.
- **COASTAL TREASURES** Open Wednesday - Saturday, 10am-4pm, 41 Third View Ave, Beachlands. Donations welcome Monday, Wednesday and Saturday before 7pm at 25 Liberty Crescent (unless raining) or phone Tania on 021 644 722 for appointment.

THURSDAY

- **MAINLY MUSIC.** 9.30am, Beachlands Baptist. Morning tea provided. 021 385 535.
- **GENTLE EXERCISE FUN & FRIENDSHIP FOR SENIORS 65YRS+:** \$5 per session 10am-12.00pm St Hilda's Church Hall, Wakelin Road, Beachlands. Contact Christine Bruinsma 021 133 5283.
- **LINE DANCING:** 10-11am, Beachlands Hall. Karen 021 213 6020.
- **TOY LIBRARY:** 10am-12pm, 59 Third View Ave. Can view & reserve toys online. Contact Betty Wilkings 021 492 325.
- **ADULT GYMNASTICS/FITNESS CLASS:** 11am-1pm FREE Te Puru.
- **SCOUTS - AGES 11-15 - 6:30-8:30** Te Puru Scout Hall, tepuru@group.scouts.nz.
- **TWICE LOVED OP SHOP:** Open 10am-3pm, 104 Maraetai Drive, Maraetai.
- **S.A.Y.G.O. "STEADY AS YOU GO"** Balance and coordination class. 10.30am. Kawakawa Bay Hall. \$2 Fee for Hall Hire and donations to Age Concern and Community. Friendly, gentle exercises. Contact 0210557370 Barbara Long.
- **COASTAL UKES (UKELLE CLUB)** 1:30 - 2:30pm, at Log Cabin, contact Val 027 393 4999 or Jean 021 023 09043.
- **261 FEARLESS - SOCIAL WOMEN'S RUNNING GROUP:** 10.15-11.15, all ages and abilities welcome. Te Puru Sports Fields by the playground.

FRIDAY

- **SENIOR CIRCUIT:** 10-11am Te Puru Centre, \$6 Ph 536 5360.
- **SENIOR STRETCH & STRENGTH:** 9-10am, Beachlands Memorial Hall, \$12 per month (8 sessions).
- **COTTAGE CAFE** 10am-12pm, K Bay, 1st and 3rd Fridays of each month, free coffee + food, company.
- **WORN AGAIN OP SHOP,** 9.30am-12pm, The Cottage, 5 K Bay-Orere Rd, Kawakawa Bay.
- **TWICE LOVED OP SHOP:** Open 10am-3pm, 104 Maraetai Drive, Maraetai.
- **COAST YOUTH:** 6:30-8:30pm, Beachlands Baptist Church, 59 Third View Ave. Anyone in intermediate or high school welcome. Contact Majella 021 079 3117 for more info.
- **CLEVEDON ART GROUP** Meets weekly on Fridays, 10am-12noon. McNicol Homestead. New members, beginners to experienced are very welcome. Phone Marian 027 296 3827.
- **FOODTOGETHER POP-UP SHOP** 2pm - 4pm, Beachlands Baptist Church, 59 Third View Ave. Grab a \$15 bag of seasonal, fresh fruit & veg at this community pop-up. We'd love to see you there. Pre-order at foodtogether.co.nz or pop in to pick your own. Contact Meg 021 887 902 for more info.

SATURDAY

- **WORN AGAIN OP SHOP,** 9.30am-12pm, The Cottage, 5 K Bay-Orere Rd, Kawakawa Bay.
- **TWICE LOVED OP SHOP:** Open 10am-3pm, 104 Maraetai Drive, Maraetai.

SUNDAY

- **TOY LIBRARY:** 9-10am, 59 Third View Ave. Can view & reserve toys online. Contact Betty Wilkings 021 492 325.

Other events and services

BEACHLANDS/MARAETAI U3A FOURTH THURSDAY of each month, 10am @ The Presbyterian Church, Jacobs Way. Monthly speakers, plus special interest groups. Chris 0274 961260.

CLEVEDON & DISTRICTS' HISTORICAL SOCIETY LAST THURSDAY OF THE MONTH at 7:30pm McNicol Homestead, 12a McNicol Road Clevedon. All welcome. Judith 292 8741.

OMANA STAMP CLUB SECOND TUESDAY OF THE MONTH, 1.30pm at Maraetai Library. Mike 536 5976 / Graham 536 6958.

POHUTUKAWA COAST FRIENDSHIP CLUB, 10am, second Thursday of each month at Pohutukawa Coast Presbyterian Church, 5 Jacobs Way, Maraetai for morning tea and speaker. We promote friendship and fun for seniors. Rhonda 021 909 724.

CLEVEDON PUMPS & FILTRATION

Servicing Clevedon & surrounding areas for over 10 years

- New Installations and Maintenance of all Pump & Water Filter Brands
- Specialist Bore Pump Repairers & Installations

Contact: Geoff Peck 0274 797 741 | geoff.peck@clevedonpumps.co.nz

YOUR BETTER HEARING STARTS HERE

WHY CHOOSE FOCUS HEARING

Your local and independent hearing care clinic



Experienced & qualified hearing care experts
Providing unbiased information and recommendations.



Hearing aid FUNDING OPTIONS available
ACC, Government subsidy, WINZ & VANZ
Payment options available
Southern Cross Easy-claim



TESTS available
Full hearing assessment (Adult & Child)
Auditory Processing Disorder (APD)
Free hearing screening
Tinnitus & Hyperacusis
Middle ear check
Pre employment hearing check - /caa
Hearing aid check & clean

Hearing Aids
Free Hearing aid consultation and recommendations.
Up to 4-6 Weeks of
NO OBLIGATION FREE TRIAL



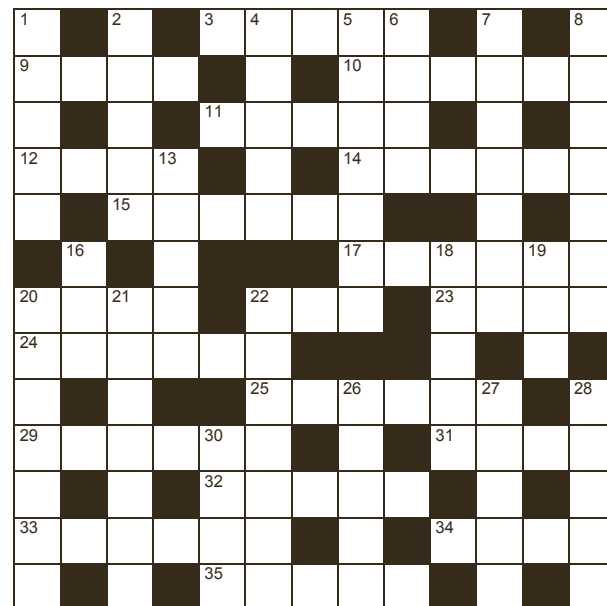
PHONE (09) 533 6463 TODAY
TO BOOK YOUR APPOINTMENT



12 Picton Street, Howick
www.focushearing.co.nz



RAYWHITE BEACHLANDS CROSSWORD



Brianne Bignell
021 400 979
brianne.bignell@raywhite.com

RayWhite.

Across

3. Make secure (5)
9. Damage (4)
10. Take place (6)
11. Perfect (5)
12. Chef (4)
14. Bemoan (6)
15. Soft felt hat (6)
17. Scribble aimlessly (6)
20. Discourteous (4)
22. Bind (3)
23. Bitter dispute (4)
24. Tense (2,4)
25. Damaging disorder (6)
29. Senior churchman (6)
31. Common sense (4)
32. At no time (5)
33. Tomfoolery (6)
34. Couch (4)
35. Short musical exercise (5)

Down

1. Shanty (5)
2. Verification (5)
4. Relating to hearing or sound (5)
5. Absurd pretence (7)
6. In good health (4)
7. Improve (7)
8. Created a jersey (7)
13. Entered data (5)
16. Merriment (3)
18. Frequently (5)
19. Haul (3)
20. Dinghy (7)
21. Solidity (7)
22. Storm (7)
26. Financial return (5)
27. Imbecile (inf) (5)
28. Typical (5)
30. Long ago (4)

Answers on page 10

Catch of the Week photo competition



Dick Bavelaar went out fishing for a weekend at Great Barrier island on Tony Smith's launch, *Bee Gee*. The weather couldn't have been better with hardly any wind, making the crossing a breeze. Dick says that unfortunately the pub in Port Fitzroy was closed; apparently the bartender left the island 6 months ago and hasn't returned yet. However the fishing was good with some nice snapper and some unusual fish like the orange pigfish in the photo.

To enter the Catch of the Week photo competition, email your photo and details about your catch (where it was caught, name of the boat, what you did with the fish, plus any other special details) to liz@gasmaraetai.co.nz. The weekly winner will receive a \$50 Top Catch voucher from GAS Maraetai, and the season winner will receive a fishing rod and reel.

Professionals & Trades

BOATING & MARINE

Ovlov Marine Pine Harbour 09 536 5249
www.ovlov.co.nz

Sales and Service of outboard motors, inboards, sterndrives and IPS.

Situated in Pine Harbour Marina and mobile we can care for your vessel be it big or small.

Contact the team on 536 5249 or email on phil@ovlov.co.nz for service enquiries and partsp@ovlov.co.nz for spare parts.

BUILDERS

- NEW BUILD
- RENOVATIONS
- DECKS
- BATHROOMS

FOR ALL YOUR BUILDING NEEDS

Call Justin on: 021 460 011
Licensed Building Practitioner

justin@innovateconstruction.co.nz
www.innovateconstruction.co.nz

DENTAL

Make the right choice about your dental care

We are dedicated to your personal well-being through dental health

- Teeth whitening
- All ceramic tooth filling materials using CerecAC omnicaam, 3D technology
- Permanent tooth replacements with dental implants
- For gum health and maintenance call our hygienists Shelley & Zahraa
- All aspects of general dentistry

FREE DENTISTRY IS AVAILABLE FOR ALL YOUNG ADULTS
Eligible from Year 9 until their 18th birthday Contact us today to learn more

Evening appointments available
Call us now on 530 8461 or email: info@whitforddental.co.nz

Dentists: •Dr.Rick Parfitt B.D.S •Dr.Alex Lindsay B.D.S
•Dr. Maad Youhanna B.D.S
Hygienist: •Shelley Chadwick R.D.H •Zahraa Talib B.O.H

Whitford Dental Group
Driving Dentistry to Excellence
Whitford Village, Whitford

smile dental
giving you one more reason to smile

QUALITY AFFORDABLE FAMILY DENTISTRY

***FREE dental examinations**
*excl. xrays

129 Beachlands Rd, Beachlands, Auckland

www.smiledental.co.nz 09 302 0808

marina DENTISTS

INTEREST-FREE DENTAL PAYMENT PLANS

Book online: www.marinadentists.co.nz | 190 Jack Lachlan Drive, Beachlands
Call us: 09 535 1074

Classified Ads

BUY/SELL

JEWELLERY WANTED TO BUY
Old gold, rings, broken chains, unwanted jewellery for scrap etc. Paul Taylor Jewellers, Shop C7 Pohutukawa Coast Shopping Center. Ph 536 4200

CAMDEN TRAILER - CAGED TYPE
3.5 tonnes capacity
Near new condition.
\$5,000
Ph: 536 6026

PUBLIC NOTICES

ANNUAL GENERAL MEETING
Kawakawa Bay/Orere Health Clinic
Sunday 18th April 2024 - 2pm
To be held at Kawakawa Bay Hall. Followed by tea/coffee and food. All welcome, come and show your support for the Health Clinic!

Read online
www.pctimes.co.nz

WORK WANTED

CLEANING
Experienced, reliable and efficient. Available for one-off deep cleans, or weekly/fortnightly cleaning. Great rates and friendly team. Phone or text Corbyn's Cleaners 021 217 7436, or find us on Facebook.

PAINTING/PLASTERING
Interior and exterior quality painting. Refs available. Ph: Gary 021 90 30 20 or 536 6358.

RENOVATIONS
Bathrooms, kitchens, toilets - build, tile, glass, flooring, plaster and paint. Start to finish. Exp. builder. Refs avail. Ph: Gary 021 90 30 20 or 536-6358. Oakes Build Landscape Maintenance. www.oakes.nz.

READY GRASS/ LANDSCAPING
Specialising in ready-grass, seeding, lawn levelling, turf cutting & landscaping. Locally based Ph: Adam on 022 015 2805.

HANDYMAN
You name it... renovations, DVS installation, gardening, retaining, fencing, landscaping, trellis, light building and maintenance work. Ph Gary on 021 903 020 or 536 6358.

MOWER AND CHAINSAW REPAIRS
All small engine repairs, mowers, ride-on mowers, chainsaws, weedtrimmers, & chain saw sharpening. No job too small. Free pick-up local area only. Ph: 536 5621 or mob 027 308 7777.

CROSSWORD ANSWERS
Across: 3. Latch, 9. Harm, 10. Happen, 11. Ideal, 12. Cook, 14. Regret, 15. Fedora, 17. Doodle, 20. Rude, 22. Tie, 23. Feud, 24. On edge, 25. Mayhem, 29. Bishop, 31. Nous, 32. Never, 33. Antics, 34. Sofa, 35. Étude. **Down:** 1. Shack, 2. Proof, 4. Audio, 5. Charade, 6. Hale, 7. Upgrade, 8. Knitted, 13. Keyed, 16. Fun, 18. Often, 19. Lug, 20. Rowboat, 21. Density, 22. Tempest, 26. Yield, 27. Moron, 28. Usual, 30. Once.

Professionals & Trades

DRAINAGE & EARTHWORKS



DVL Drainage Vision Limited
www.drainagevision.co.nz
Mike 027 593 0326

- Drain Unblocking • CCTV Inspections • Certified Drainlayer
- Vacuum Trucks • Pipe & Cable Locations

MECHANICAL REPAIRS



POHUTUKAWA MOTORS.co.nz
AA APPROVED REPAIRER, AA BATTERY STOCKIST, MTA ASSURED

WE ARE YOUR LOCAL, HONEST AND TRUSTED AUTOMOTIVE REPAIRER. POP DOWN AND SEE US. WE'LL LOOK AFTER YOU AND YOUR VEHICLE.

- ALL MECHANICAL REPAIRS
- WOF
- BRAKES
- TYRES
- AUTOMOTIVE AIRCON SERVICING

57 THIRD VIEW AVENUE, BEACHLANDS
09 536 6664

TREE SERVICES



Land Clearing
Tree Maintenance
Tree removal
Stump Grinding
Hedge Care

Phone Doug
021537171 • 09 5378595

info@dstrees.co.nz
www.dstrees.co.nz

ELECTRICIANS

Auckland Wide Electrical
Ph 536 6800
Your Local Registered Electricians



- Heat Pump /Aircon Installations
- Switchboard Upgrades & Rewiring
- TV Cabling and Aerial Installations
- New House Wiring and Renovations
- Water pumps • Hot Water
- Oven Repairs • Lighting and Switchgear

www.awe.co.nz • help@awe.co.nz • free quotes
Providing electrical services on the Pohutukawa Coast & throughout Auckland

MORTGAGE ADVISERS

Loan Market New Zealand's widest range of lenders, in one place.

Toni Dawson, Mortgage Adviser
027 646 9269
toni.dawson@loanmarket.co.nz
NZ Financial Services Group Limited (FSP286965)

Find out more at adviser.loanmarket.co.nz/toni-dawson



Your Local Arborists
Your problem is our specialty!

- Tree Care, fine pruning and removals
- Shelterbelt removals and chipping
- Palm cleaning and hedge trimming
- Hedge trimming
- Tree Light installations
- Small Hiab Lift and Shifts

CALL PHIL FOR A FREE QUOTE
022 607 4455
CHECK OUT jessepcontracting.co.nz

TYRES



YOUR TRUE TYRE PROFESSIONAL ON THE COAST

- Friendly Reliable Service
- Locally Owned & Operated
- Over 20 Years Experience
- For ALL Your Tyre Needs

Agricultural, Batteries, Car / Passenger, Earthmover, Mag & Tyre Packages, Puncture Repairs, Truck / Commercial, Wheel Balancing, 4WD / Off Road, 24/7 After-Hours Callout

Call Mike 021 901 034 | sales@tyreguard.co.nz | www.tyreguard.co.nz



No job too small - No job too big!
Fast, reliable service.
Qualified lighting designer

PH: 536-4076 FREE Quotes
MOB: 021 769 964
www.pohutukawaelectrical.co.nz



RE-ROOFING | NEW ROOFS | ROOF COATINGS
CONCRETE ROOF TILE SPECIALIST | CONCRETE TILE REPAIRS
GUTTER REPLACEMENT | INTERNAL GUTTER CONVERSION

0800 766 350 | www.roofingnz.co.nz | info@roofingnz.co.nz

VETERINARY

Franklin Vets Beachlands

1/43 Kouka Road,
Pohutukawa Coast
Shopping Centre
538 0010 • beachlands@fvs.co.nz
www.franklinvets.co.nz

OPEN HOURS
Mon-Friday 8am-6pm
Saturday 9am-3pm



MEAT SUPPLIER



For all your homekill and hunting processing.
Vacuum packing standard & delivery available.
Qualified butchers, expert advice, friendly service.
Sausages (gluten free available), bacon, salami, biersticks, biltong, smoking and curing.

027 632 8979
admin@meatworx.co.nz
www.meatworx.co.nz

QUALITY | RELIABLE | WHITFORD BASED | LAYHER SCAFFOLD SYSTEM



Contact Dylan 021 239 4276 | dtswrightsc scaffolding@gmail.com

SURVEYOR

SURVEY PLUS
LAND SURVEYING

Your local Pohutukawa Coast Surveyor

admin@surveyplus.co.nz | 020 4 SURVEY (020 4 787839)

POHUTUKAWA COAST VETS

LOCALLY OWNED & OPERATED IN BEACHLANDS

Book an appointment
Ph: 09 320 1472
Or book online www.pcvets.co.nz

reception@pcvets.co.nz | 43 Wakelin Rd, Beachlands



MECHANICAL REPAIRS


MARAETAI AUTOMOTIVE

All Makes & Models | All Types of Repairs
Petrol - Diesel - European Vehicles - Loan Cars

- Servicing • WOF • Brakes • Clutches • Wheel Alignments
- Tyres • Transmission Services • Batteries • Welding
- Cambelts • CV Joints • Auto Electrical Repairs

131 Maraetai Drive, Maraetai
Ph: 536 6542

ALL WORK GUARANTEED
HOURS: Mon - Fri: 8am-5pm



WATER



The highest quality water for all your household, property and commercial needs

Ask for our pure water by name

Manukau Quarries LP
885 Whitford-Maraetai Road, Beachlands | 09 2630220

Advertise here for \$30 weekly or \$35 fortnightly.

Ph: 021 026 14467 or email advertising@pctimes.co.nz

TREE SERVICES

CALL NATHAN 021 196 6509

- CHIPPING
- LAND CLEARING
- HEDGE TRIMMING
- TREE PRUNING
- TREE REMOVAL
- STUMP GRINDING

FIND US ON FACEBOOK coastalcutters@hotmail.com



BUSINESS LISTINGS

ACCOUNTING SERVICES

Probiz Systems Ltd, Sharon Bramley	530 8036
Ian McLennan, CA www.iwm.co.nz	536 6715
Diane Myers CA, diane@myersca.co.nz	292 9470
Louw & Co, info@louwandco.co.nz	533 8420
Business Allsorts, MYOB & Xero Experts	536 5850
Peat Johnson Murray	869 2091
Giles & Liew, gilesandliew.co.nz	262 1955

AERIALS, TV & HOME THEATRE

Auckland Wide Electrical	536 6800, 021 998 665
--------------------------	-----------------------

AGGREGATES

Beachlands Mitre 10	536 6567
---------------------	----------

ALUMINUM WINDOWS

www.windowrenovations.co.nz	
Repairs and Replacements	021 297 2320

APPLIANCE SERVICING

Axial appliance servicing Service@axial.co.nz	573 0877
Appliance Wizard Ltd Ph Paul	0275 784 226

ARCHITECTS

Peter Diprose www.diprose.co.nz	530 9065 or 021 125 1498
---------------------------------	--------------------------

ARCHITECTURAL PLAN & DESIGN

Ross J Willoughby	530 9358
RBG Ltd	027 260 8005

AUTO ELECTRICIAN

Mobile Auto & Marine	0800 662 352
----------------------	--------------

BARBERS

Joe's Barbershop	536 7265
------------------	----------

BEAUTY

Xtreme Beauty & Barbers	600 2325 or 021 992 686
www.xtremebeauty.co.nz	
Serenity Day Spa, serenitydayspald@yahoo.com	02102216026

BED & BREAKFAST

Brookwood Lodge, Beachlands.	536 6975 or 0274 796 453
------------------------------	--------------------------

BLIND SERVICES

Blindworks - For all New Blinds - Plus Blind Cleaning and Repairs	
www.blindworks.co.nz	0800 999 229

Onsite blind cleaning & repairs - plus new blinds

info@onsiteblinds.co.nz	0508 253 262
-------------------------	--------------

BOOKKEEPERS

Business Allsorts, MYOB & Xero Experts	536 5850
--	----------

BUILDERS

Bryant Builders Ltd	027 493 5507 or 027 692 8777
Horning Instincts Ltd, ph Gareth Price	021 618 181 or 536 6422
Michael Nootobos	536 6628 or 0274 799 776
Revamp Renovations Ltd	027 437 4896
Stehr Brothers Construction	021 939 008
Superior Builders, ph Neil	021 079 2589

BUILDERS' SUPPLIES

Morton Timber Co. Clevedon	292 8656
Beachlands Mitre 10	536 6567

CARPET CLEANING

Aladdin Carpets, Phone Michelle	09 537 4320
---------------------------------	-------------

CELEBRANT

Ceremonies by Diana, www.celebrantdiana.co.nz	021 152 9925
---	--------------

COMPUTER REPAIR

Wi-Fi & Internet, Home and Office IT Support	
Call Graeme Thomas	027 429 0677

CONCRETE SERVICES

Aaron Ross Concreting	0210 233 2673
We Lay Concrete Ltd.	021 038 1086
Murray Douglas Limited	027 498 5267

COSTUME HIRE

Clevedon Costumes and Vintage Apparel	022 018 2711
---------------------------------------	--------------

DENTISTS

Whitford Dental Group	530 8461
- Dr Rick Parfitt, Dr Alex Lindsay & Dr Susan Clow	
- Hygienist - Shelley Chadwick & Zahraa Talib	530 8461
Anthony Hunt Dental Ltd, Dr Anthony Hunt, Clevedon	292 9071
Marina Dentists Pine Harbour	536 4361
Smile Dental Beachlands	
- Your local dentist. New patients welcome.	022 8888 171
- Free examination since 1996	09 302 0808
www.smiledental.co.nz	0800 4 smile

DIGGER & TRUCK HIRE

The Little Digger	027 278 0335 or 536 4424
Digger Landscapes www.diggerlandscapes.nz	021 415 832

DOCTORS

Beachlands Medical Centre	536 6006
---------------------------	----------

DRAINLAYERS

Vibe Earthmovers and Drainage	call Vincent 0272 225 377
Probuilt Earthworks Drainage	call Gary 021 617 611
Drainage Vision Ltd	call Mike Adams 027 593 0326
Certified drainlayer, CCTV inspections, drain unblocking	

EARLY CHILDHOOD EDUCATION

Whitford Early Learning Centre	530 8726
Clevedon Kidz Early Childhood Centre	292 8358

EARTH MOVING CONTRACTORS

Henri & Lynda Habraken	0274 961 472, 536 6806
www.brookbycontracting.co.nz Earthworks/Cartage/Drilling	
	027 530 9290

Riordan Contracting	09 530 9429 OR 027 430 9429
Stehr Brothers Civil Construction	021 939 008
Pohutukawa Coast Earthmoving, Grant	027 475 8468

ELECTRICIANS

Auckland Electrical & Pump Services	536 4074, 027 4741 579
Auckland Wide Electrical	536 6800, 021 998 665
Pohutukawa Electrical	536 4076, mob 021 769 964
Positive Electrical Services	021 801 606

ENGINEERS - CIVIL/ENVIRONMENTAL/STRUCTURAL

Fraser Thomas Ltd	278 7078
-------------------	----------

FENCING CONTRACTORS

Craig McLeod	027 292 5844
White Fencing:	292 8064, 0274 957 868
- rural fencing, retaining walls	www.whitefencing.co.nz

FLOORING

Nicks Floor Sanding	536 6916, Mobile 021 875 456
---------------------	------------------------------

FLORISTS

Clevedon Flowers, www.clevedonflowers.co.nz	292 9540
Harbour Rose Florist - Wedding and Events	021 0243 5299

FUNERAL DIRECTORS

Resthaven Funeral Services	
Rachel Benns & Raewyn Proctor	533 7493, 267 2530
Ensom Funeral Services	
John Ensom & Jo Nevin	299 6646 or 524 6765
Fountains Funeral Directors & Monumentalists - Papakura, Franklin and Manurewa	298 2957
Howick Funeral Home Robert Johnstone - Mark Rowley	534 7300
Souly Funerals Beachlands	0800 47 68 59

GARAGE DOORS

Repairs & Service, Metro Garage Doors	263 6608
---------------------------------------	----------

GARDEN CENTRE

Beachlands Mitre 10	536 6567
---------------------	----------

GARDENING

Rosie's Gardening Service	021 0233 5998
---------------------------	---------------

GEOTECHNICAL SERVICES

Fraser Thomas Ltd	278 7078
-------------------	----------

GIBSTOPPING

Gib stopping & painting - Tony	0274 966 394 or 536 6477
--------------------------------	--------------------------

GLASS AND GLAZING

Manurewa Glass	266 7794
Howick Glass	535 4180

GUTTER CLEANING

Skyhigh Roof and Gutter Cleaning Ltd	
Website: www.skyhigh.nz	021 951 719

HAIRDRESSING

Hair Do's @ Maraetai, ph Denise	0274 599 901
Cooper Hairdressing, 16 Te Pene Rd, Maraetai	027 329 1781

HANDYMAN SERVICES

Local Handyman:	536 5050 or 021 156 7370
Oakes Build Landscape Maintenance, www.oakes.nz	021 903 020

HEAT PUMPS

Positive Electrical Services	021 801 606
Auckland Wide Electrical	536 6800
AES - Auckland Energy Solutions	
Website: www.aes.nz Phone: 09 575 1191	

HOUSE WASHING

BEST Property Services	021 366 615
Just Clean Me, Exterior Cleaning Services	022 089 2383
House washing, gutter cleaning, roof treatments, water blasting.	

JEWELLER

Paul Taylor Manufacturing Jewellers	536 4200
Repairs/Remodelling/Valuations/Insurance Replacements	
Shop C/7, 129 Beachlands Rd, Pohutukawa Coast Shopping Centre	

KITCHENS

Kitchen Craft Ltd, Ph Warren	09 274 4221
for Sizzling Kitchen Design & Cabinetry	www.kitchencraft.co.nz

LANDSCAPING

Eastside Landscapes	021 484 158
Nicky Auld - landscape design, consultations	021 972 534

LAUNDROMAT

Kiwi Laundry Co, www.kiwilaundryco.co.nz	022 463 8416
7 DAYS at GAS Maraetai, 131 Maraetai Drive, Maraetai	536 4218

LAWNMOWING & GARDENING SERVICES

JIMS MOWING Beachlands - Frank	027 415 3657
Greenacres - Stephen Howe	292 4165 or 021 2266 753
Prolawns (Beachlands based) Shane	021 746 887
R&R Garden ServicesRichie: 021 917 332, Roanne: 027 252 8183	
Coastal Gardener (Beachlands based) Darryl	022 360 3065

LAWNMOWER SALES/SERVICE/REPAIRS

B'inds/M'tai mower/chainsaw repairs	536 5621 or 027 308 7777
-------------------------------------	--------------------------

LEGAL SERVICES

Sutcliffe Matson Law	09 279 8351 or 021 327 030
----------------------	----------------------------

LOCKSMITHS

Local Locksmith - Tony	536 5050 or 021 156 7370
Armstrong Smarter Security	0800 506 111

LPG SUPPLIERS

Matagas	0800 954 427
---------	--------------

MARINE AND BOATING

Ovlov Marine Pine Harbour LTD	536 5249
-------------------------------	----------

MECHANICAL REPAIRS

Maraetai Automotive	536 6542
Pohutukawa Motors, 57 Third View Ave, Beachlands	536 6664
Garaway Autos	022 395 6185
Luke's Garage Ltd	09 218 6442 / 022 301 0412

MIRRORS

Howick Glass	535 4180
--------------	----------

OUTBOARD REPAIRS/MARINE ENGINEERING

Eastern Marine - Mercury Certified Service Centre - Outboards, sterndrive, petrol & diesel.	536 6252
---	----------

PAINTERS & DECORATORS

East Auckland Painting Ltd	027 619 2619
specialistlinings.co.nz We fix, stop, and paint	0800 54 64 64
Painta Property Services-Beachlands+Sth East Akl	021 101 6937
Interior / Exterior / Roof / Fences - mikegrubb@painta.co.nz	

PEST CONTROL

Coastal Pest Solutions (including rats, rabbits, possums, pest birds, wasps & bees)	536 6020 or 0273 932 125
Professional Pest Control	536 6690 or 021 078 3622

PET ACCOMMODATION

Fairfield Pet Lodge, Clevedon	027 222 0307
Pets at Whitford Spa and Stay (PAWSS)	530 8860

PHARMACIES

Unichem Beachlands Pharmacy	536 6500, fx 536 6590
-----------------------------	-----------------------

PHYSIOTHERAPIST

Beachlands Physio beachlandspysio.co.nz	09 222 4120
---	-------------

PLASTERING SERVICES

Solid Plastering, Bruce Parsons	021 981 812
---------------------------------	-------------

PLUMBERS

Dynamo Plumbing	0800 175 988
BF Brown Plumbing & Drainlaying	0800 477 455

PLUMBERS & GASFITTERS

Ashby Plumbing & Gas	292 2445 or 0272 553 499
----------------------	--------------------------

PROPERTY MANAGEMENT

Rent People Ltd	0800 426 580
Ray White Lighthouse Licensed Real Estate	536 7011
Barfoot & Thompson Beachlands	536 4990

PUMP SALES & REPAIRS

Auckland Electrical & Pump Services	536 4074, 0274 741 579
Malmaks Water Shop	530 8872, 021 353 158
Allwater Pumps and Supplies Ltd	09 536 5444, 027 536 5444
Clevedon Pumps & Filtration	027 479 7741

QUARRY

Manukau Quarries	263 0220
------------------	----------

QUANTITY SURVEYORS

Hope & Associates - Residential estimating specialist	021 882 312
---	-------------

REAL ESTATE AGENTS

Barfoot & Thompson Beachlands	536 4990
Barfoot & Thompson Whitford	530 8292
RE/MAX Clevedon	292 8388
Ray White Lighthouse Licensed Real Estate	536 7011

ROOF PAINTING SERVICES

Master Tradesman. Text details for fast service:	027 517 8494
Visit our website: www.5starroofpainting.co.nz	

ROOF SOFTWASHING

Skyhigh Roof and Gutter Cleaning Ltd	
Website: www.skyhigh.nz	021 951 719

ROOFING SERVICES

Eastern Roofing Services, ph Steve	536 5875 or 021 865 615
Alba Roofing	021 584 530
Roofing & Spouting NZ Ltd	021 766 260

SCAFFOLDING

Scaffold Connect Ltd	021 235 5963 or 09 576 5879
DTS Wright Scaffolding Ltd	021 239 4276

SECURITY SYSTEMS

ADS Security Ltd (alarms & monitoring)	536 6860
Armstrong Smarter Security and Alarms	09 274 0999

SEPTIC TANK CLEANING

SST Services phone Rob	09 2947611 or 0274 967430
------------------------	---------------------------

STORAGE

Beachlands Self Storage	021 281 5355
-------------------------	--------------

SURVEYORS - LAND

McInnes, Read & Lucas Ltd	298 7288
Fraser Thomas Ltd	278 7078
Churchill Land Development Services Ltd	273 4182
Survey Plus Ltd	020 4 SURVEY (020 4 787839)

TAXIS/TRANSPORT/SHUTTLES

Coast Shuttle - local hire & airport trips	536 6488 or 0274 722 613
Omana Shuttles - Airport Transfers	536 5935
Driving Miss Daisy	09 534 7712 or 021 174 9999

TILING

Wall & floor tiling & waterproofing, phone George	027 534 3741
---	--------------

TRAVEL - INTERNATIONAL & DOMESTIC

Clevedon Travel Brokers chrisshyashby@ttb.co.nz	027 273 9701
Travelselect Beachlands call Mark or Sam	536 6730

TREE SERVICES

Coastal Cutters - coastalcutters@hotmail.com	021 196 6509
Jessep Contracting - JessepContracting.co.nz	022 607 4455

TRUCK & BOBCAT HIRE

Murray Douglas Limited	027 498 5267
------------------------	--------------

TYRES - SALES & SERVICE

Maraetai Automotive	536 6542
Pohutukawa Motors	536 6664
Tyre Guard - Mobile Tyre Service, Call Mike	021 901 034

UPHOLSTERY & CANVAS

Eastern Cover Centre. Boat & Outdoor Furniture Covers	535 7524
---	----------

VALUERS - PROPERTY

Property Valuations Ltd, Papakura	299 7406
Seagar & Partners Ltd, Charlene	272 9660 or 021 945 806

VETERINARY SERVICES

Franklin Vets - Pohutukawa Coast Shopping Centre, Beachlands, Open: Mon-Fri: 8am-6pm Sat: 9am-3pm	538 0010
Pohutukawa Coast Vets - 43 Wakelin Rd, Beachlands	320 14