

27 October 2023

Auckland Transport addresses pathway predicament



Auckland Transport's repairs to the loose metal pathway at Maraetai beach are washed away with every storm surge.

Auckland Transport says it is investigating a more sustainable and durable alternative to the use of loose metal on top of the Maraetai seawall.

The loose metal pathway that separates the shore from the road at Maraetai beach has drawn criticism from locals, who have commented upon the constant upkeep required after the metal gets washed away during storm surges.

Over the past five years, Auckland Transport says it has spent \$72,000 on repairs to the pathway.

Master Stonemason and local resident Len Lavas says he finds it hard to believe that is all that has been spent over the past five years. "I would say a lot more money has been spent on repairing that pathway," he says.

Twenty years ago Len built the stone seawall at Sunkist Bay,

which has stood the test of time. He believes Auckland Council needs to replace the timber seawall at Maraetai. "They should never have built it," he says, suggesting that the wall should have been designed with a softer slope, and that wood was a poor choice of material. "When waves hit a flat wall, some water goes up and some goes down, eroding the sand beneath. A sloping stone wall, designed right, will help protect the beach. Build a proper seawall and you'll never have any problems."

When asked by the *PC Times* why the loose metal option was chosen, Auckland Transport did not respond directly, other than to say there was never originally a pathway between the

CONTINUED ON PAGE 3

VOTE SPECIAL AGENTS

Make your vote count!
Elect 003 to sell your home
Spring Deals ON NOW call...

SPECIAL AGENTS 003

Ian 027 285 9314
Jenny 0204 000 2564
Nicolette 027 702 9157
Mark 027 523 2245

BARFOOT & THOMPSON

We're here for **you** and all your property management needs!

BARFOOT & THOMPSON
PROPERTY MANAGEMENT

Beachlands
09 536 4990

RayWhite

Dedicated Property Management

*Best Value & Top Service

Call the Ray White Beachlands Property Management Team
+64 9 536 7011 / +64 21 433 052 / beachlands.nz@raywhite.com

#experiencethedifference
Licensed (REAA) 2008

MORTON TIMBER

226 North Road, Clevedon 2248
Ph: 292 8656
021 943 220

Email: office@mortontimber.co.nz
Web: www.mortontimber.co.nz

SPECIAL MIX

140X45 H3.2 SG8 DRESSED IN 3.6m/ 4.2m
\$5.50 per lineal metre plus gst

190X45 H3.2 SG8 DRESSED IN 4.2m
\$6.50 per lineal metre plus gst

140X45 H4 TG&V IN 6m Lengths
\$5.25 per lineal metre plus gst

1.8 No 1 Quarters, 80 per bundle
(must buy bundle) \$760 plus gst

1.8 No 1 SECONDS, 50 per bundle
(must buy bundle) \$675 plus gst

BATTENS 1.140m, 200 per bundle
(must buy bundle) \$220 plus gst

WHILE STOCKS LAST
WE ARE OPEN ON SATURDAYS 7:30AM TO NOON

INSIDE: Kawakawa Bay boat ramp closed for repairs p3

Sports clubs award end of season prizes p6

RayWhite.

Second Generation Real Estate
EXPERIENCE the difference...

Ray White Beachlands
Lighthouse Real Estate Limited
Licensed (REAA 2008)

P : (09) 536 7011 or (021) 400 979
E : beachlands.nz@raywhite.com
W : rwbeachlands.co.nz
A : 81 Second View Avenue, Beachlands

EmbroidMe
Uniforms & Promotional Products

SYZMIK WORKWEAR

Clothing that works as hard as you do!

Embroidery, Printing, Lettering, Dye Sublimation and more...
Cnr Smales and Springs Rds, East Tamaki - 09 265 0300

Great Smiles. Better Health.

Offering a caring, professional service for the whole family including general, restorative and cosmetic dentistry.

(09) 292 907 | smile@ahdental.co.nz
52 Papakura-Clevedon Road
www.ahdental.co.nz

ANTHONY HUNT
Dental
GREAT SMILES • BETTER HEALTH

Deadlines: Display advertising - 5pm Thursday. Classified and News - midday Friday

advertising@pctimes.co.nz | www.pctimes.co.nz

GET IN TOUCH

E: info@pctimes.co.nz
W: www.pctimes.co.nz
F: facebook.com/pctimes
A: PO Box 5, Beachlands 2147

EDITOR

Leanne Chamberlin
 021 426 207
 leanne@pctimes.co.nz

ADVERTISING

Melody Cutfield
 021 0261 4467
 advertising@pctimes.co.nz

CLASSIFIEDS

advertising@pctimes.co.nz

DELIVERY/DISTRIBUTION

distribution@pctimes.co.nz

ACCOUNTS

Pam Rutherford
 accounts@pctimes.co.nz

The Pohutukawa Coast Times is distributed weekly to 6500 homes and businesses in: Whitford, Brookby, Beachlands, Maraetai, Clevedon, Ardmore, Alfriston, Kawakawa Bay, Orere Pt, Hunua, Paparimu

Member of the New Zealand Community Newspapers Association



The PC Times 20 years ago:
 24 October 2003: Narrow escape for family in late night house fire.



Weekly Tide Chart

27 Fri	☉	12:06am ▼ 0.6m	6:30am ▲ 3.1m	🐟🐟
28 Sat	☉	1:00am ▼ 0.4m	7:27am ▲ 3.2m	🐟🐟🐟
29 Sun	☉	1:52am ▼ 0.3m	8:19am ▲ 3.4m	🐟🐟🐟
30 Mon	☉	2:42am ▼ 0.3m	9:07am ▲ 3.4m	🐟🐟
31 Tue	☉	3:29am ▼ 0.3m	9:54am ▲ 3.4m	🐟
1 Wed	☉	4:14am ▼ 0.3m	10:40am ▲ 3.4m	🐟
2 Thu	☉	4:58am ▼ 0.4m	11:25am ▲ 3.2m	🐟

MARINE FORECAST – VHF CHANNEL 19
 AUCKLAND FORECAST – 0900 999+ YOUR STD

Pine Harbour Electrical
 Unit 1A Pine Harbour Marina
 P: 536-6177
 W: www.phe.co.nz

Guest editorial by Orere Community & Boating Club

We were warned a while back. Big winds are coming.

Then in September they arrived, and how. El Nino finally displaced our soggy, triple-dip La Nina, announcing its arrival with record winds across the country.

How's this – the small East Coast settlement that recorded fearsome gusts of over 240kmh in September didn't lose their power. Good lines those.

Over the next few months we can expect plenty of drying, westerly winds. We won't miss the constant wetness of the last year, but fear the inevitable weather pendulum swing could quickly see flood issues become drought issues.

These winds and the 3-month closure of the country's busiest boat ramp in Kawakawa Bay will give fish life in the lower Gulf a second spring/summer of lower angler action. Their biggest threat could yet be the weeks-long sewage discharge in the city we are being forced to watch like a slow-mo train wreck.

Then came the second big wind we were warned about and it finally got to be measured on October 14, Election Day.

The first hints of a powerful El

Nino tested the country's structures and resilience, but the 2023 Wind of Change proved even stronger. Strong enough to blow out of power the only majority government NZ has had in 27 years of MMP voting.

When Harold Macmillan delivered his 'Wind of Change' speech in South Africa 63 years ago, it gave the green light to British decolonisation across Africa. Growing African nationalism, growing costs to maintain the Empire and growing fears of communism (yes, it was cold war days) combined in an unstoppable force to change the face of the African continent.

The phrase has since come to represent an irresistible force, a change that is going to happen.

Our recent display of windpower had its rising in the discontent and division which grew out of the government's Covid response, then was supercharged across social and broadcast channels. We were exhorted to 'Take our country back' (from...?), 'Get NZ back on track' and 'Vote for real change'. By mid October change was just going to happen.

[Thankfully we at Orere Point were spared much of the street level election dross. No sighting of any craven candidates, no signage of any hue, and no polling booth either in our island of

political tranquility. Locally the closest we came to the election was one resident who stood as a Loyal Party candidate, and maybe that's pretty on brand for Orere.]

Change happens because life and time happens. It takes place at micro cellular levels through to macro populations. When you think about it, change is the one major and necessary constant in all our lives. Heck, it's maybe part of the Kiwi DNA given everyone here, from the earliest arrivals on, descends from someone or is someone who came to New Zealand to change their lot.

So when presented with some low energy political options, did Kiwis lean back into their DNA and take the familiar choice, change? Maybe. Regardless, it has come, but the thing is most of us don't know what this change is going to look like. Unless we are maybe farmers, landlords, property investors or real estate agents. Or the climate.

For the rest of us these changes won't be evident until the electoral dust settles, but we have plenty of indications that they will be significant, long lasting and given the rhetoric of the last five or six months, inevitable.

Macmillan's Wind of Change speech was about the unavoidable future and readying for it. Our wind of change, much like El Nino and La Nina, feels quite different.

Tim Greene, Orere Community & Boating Club

The views expressed in the Pohutukawa Coast Times Guest Editorial column are not necessarily the views of the editor or publisher.

WIN tickets to Howick Little Theatre

The PC Times has two double passes to give away to Howick Little Theatre's upcoming production, 'Old Love'.

Howick Little Theatre opens Norm Foster's comedy *Old Love* on Saturday 11 November. A story of courtship, rekindled romance and the indomitability of hope, *Old Love* spans three decades, and half-a-dozen meetings between Bud, a salesman, and Molly, his boss's wife. One of them is smitten from the first, the other less so. Another hit from Canada's Norm Foster, this clever and witty heart-warming journey celebrates the never-ending pursuit of love – old and new.

Be in to win a double pass by emailing your name and contact number to info@pctimes.co.nz.

Entries close Friday 3 November

Play details:

OLD LOVE
 A comedy by Norm Foster/Canada/2008
 Directed by Tracey Holdsworth
 Season: 11 Nov to 2 Dec, 8pm.
 Matinees: 12 & 19 Nov, 2pm.



LAWYERS SERVING THE POHUTUKAWA COAST

38A Wakelin Road, Beachlands
 Available Monday - Friday, by appointment



photo credit: To&Co Photography
BREANNA FULLER AND **BRADEN MATSON**
BCOMLLB (HONS) | ASSOCIATE MA/LLB | DIRECTOR

Conveyancing, Refinancing, Wills,
 Powers of Attorney, Business Transactions
 Family & Commercial Law
 and other general legal needs.

We are happy to meet after hours
 at your home for your convenience.

Ph: 09 279 8351 or Braden: 021 327 030
 braden@smlaw.net.nz | breanna@smlaw.net.nz
 www.sutcliffematsonlaw.net.nz



"Never bend your head.
 Always hold it high. Look the
 world straight in the eye."

- Helen Keller -

Every Sunday 9am

Plus Kids' Programme
Minister: Mark Chapman

For more information contact Lyn:
 lyn.41buchanan@gmail.com

Playgroup Tues & Wed 9am - 12pm

Food bank 027 304 4998 Phone or text

5 Jacobs Way, Maraetai



Complete panelbeating and car painting

East Tamaki: Unit B 154 Harris Rd, East Tamaki, Auckland 09 274 4778
 Manukau: 2/117 Kerrs Rd, Manukau, Auckland 09 268 9340

Popular boat ramp closed for repairs

The country's busiest boat ramp is closed for repairs until mid December. Water access at Kawakawa Bay Boat Club has been closed since 9 October, and will remain closed while its three well-used pontoons are replaced.

Auckland Council is now removing the existing pontoons and installing new ones, a process that it says will take about three months. The boat ramp is expected to re-open by mid December, depending on weather.

John Seward, Auckland Council's Acting General Manager Resilient Land & Coasts says he understands the reduced capacity for boaties may be frustrating for some, however the new pontoons will be a great improvement.

"All going to schedule, the boat ramp and brand-new pontoons will be up and running in time for Christmas and the summer months, as a gateway to the Hauraki Gulf for locals and visitors for years to come.

"We will keep the community informed on the progress of the pontoon works via our monthly updates from the Council project manager."

Once the new pontoons have been installed they are expected to have a lifespan of at least 30 years.

During the temporary closure, boaties can still launch from the Kawakawa Bay's



Work is underway to replace the pontoons at Kawakawa Bay Boat Club

public boat ramp located just 200m to the south of Kawakawa Bay Boat Club on Kawakawa Bay Coast Road. This ramp

is usable only around high tide and is less suitable for larger boats.

Auckland Transport addresses pathway predicament

CONTINUED FROM PAGE 1

car parks and the sea wall.

"The original construction drawings indicated this area would be grassed. However, maintaining this as a grassed area is both impractical and expensive as it is frequently washed away due to tidal action over topping the wall," says an Auckland Transport spokesperson.

Auckland Transport says it is now investigating other options for the pathway, but did not give a timeline for when this might be done, saying that the seawall is now in the hands of the Asset Management team, who "do not have a view on future maintenance expenditure".

AT says that as part of its routine asset monitoring, the seawall will be inspected every two years which will assist in identifying future maintenance and renewal requirements for the structure.

St Thomas' Church Whitford

37 Whitford-Maraetai Rd, 2571

Following carefully, wherever God is leading, in this rapidly changing and diverse world!

Family Friendly worship.
We would love for you and your family to join us on the journey



Sundays at 9.30am | Chaplain: Reverend Maku Potae
Ph: 027 454 8197 | Email: stthomaschaplain@gmail.com

MANUREWA PODIATRY
MARK CHAMBERLIN BHSc (pod) MNZS POD

see us for any problems with
your feet

- Corns
- Calluses
- Ingrown Toenails
- Heel, Arch Pain
- Verruca
- Surgery/Orthotics

PH 266 8800

From children to the elderly, sports people to workers and those with a specific medical problem, where foot care is critical...
We diagnose and treat conditions of the feet and lower limbs...

LATE NIGHT THURSDAY
Inside Unichem Pharmacy
200 Gt South Rd, Manurewa

OUR LADY STAR OF THE SEA CATHOLIC PARISH

Mass is celebrated at 5pm on Saturday at St Hilda's Church, 3 Wakelin Road, Beachlands.

Visit our website for details
www.beachlandsc.com

FOURFORTY
MOUNTAIN BIKE PARK

Howick FUNERAL HOME
New Zealand owned & operated since 1993

A privilege to care for your family

Every life is special, we understand that. Let us pay tribute to the life of your loved one and celebrate the unique way they have touched you, your family and those around you.

For a personal, professional service contact us today to discuss your options:
35 Wellington St, Howick | Phone 534 7300 | www.howickfuneralhome.nz

521 KAWAKAWA-ORERE RD, ORERE POINT
WWW.FOURFORTYMTBPARK.CO.NZ

Downhill mountainbike park puts pedal to the metal

Fourforty Mountainbike Park has reopened for the season after implementing some big changes, making it even easier for people to get their lungs pumping in the great outdoors.

Fourforty owner Byron Scott says this year their team made the decision to open the park's uphill tracks free of charge to the public.

"I know there will be quite a few locals keen to take advantage of this!" says Byron.

The park has also improved its retail cafe space and added more trails to its network, now boasting more than 50kms of gravity tracks through native bush and pine forest. The public can also access an asphalt pump track.

"It's a great place to come and hang for the day with the kids."

Byron says Fourforty is designed and built by leading trail company Trailpro with input from pro riders such as Cam Cole and Wyn Masters. Trailpro were instrumental in designing the recently built pump track at Beachlands School.

The focus has been to deliver a rider built park with all levels of trails to keep the expert mountain biker "stoked lap after lap", says Byron. Now the largest dedicated gravity park in the North Island, Fourforty offers something for everybody, from flowing grade 2 trails to grade 5 raw technical hand built trails.



"The team's efforts show what a passionate crew can deliver. Every twist, drop, jump, gap, root is what makes this place heaven on two wheels, if you can keep them on the ground!" says Byron.

A large open deck area and rustic retail space are a great place to refresh between runs, and there is even a natural river swimming hole to cool off in.

Fourforty will host the first round of the New Zealand national downhill mountainbike series on 13 January, where the country's best will push themselves to the limits on the most technical tracks.

Located on Kawakawa-Ōrere Road, Fourforty is open Wednesdays, Fridays and weekends plus extended hours over the summer holidays December and

January. Byron suggests booking online for a half or full day shuttle pass and rental bike to lock in your spot. Or you can turn up on the day and purchase shuttle passes at the door.

See fourfourtymtbpark.co.nz for further information.

Honouring and Celebrating Life

Our approach, philosophy and high standards are ideals we are proud to uphold. Our compassion, values and dedication when caring for the bereaved are just a few of the qualities that form the heart of Resthaven Funerals.

HOWICK. Cnr Picton & Walter MacDonald Sts | Ph. 533 7493
MANUREWA. 88 Great South Rd | Ph. 267 2530

www.resthavenfunerals.co.nz

WE ARE NOW AN AUTHORISED DEALERSHIP FOR

GRUNDFOS
WATER PUMPS

REPAIRS & MAINTENANCE
 ON ALL PUMP BRANDS

STOCK AND SELL

- Pumps • UV Lamps
- All in one pump box
- Carbon & Sediment Filters
- Salt • Bore Softeners

• DAB • GRUNDFOS • GREENWAY • VIQUA
 • ATLAS FILTRI • ALPINE PURE • STERILIGHT
 • PURETEC • DAVEY • HANSEN

PH: 530 8872
 Whitford Village
www.malmakswatershop.co.nz

SERVICING POHUTUKAWA COAST FOR OVER 10 YEARS

Love the Theatre?

Why not grab a bargain and buy a 2024 Showcard for 5 plays for just \$130*. Plus receive preferential booking entitlements and pay no booking fees. Buy online at hlt.nz or call 534-1401 for more information.

Showcard brochures are also available from the theatre.

*Standard ticket prices are: Adult \$32, Concession \$29.

COMING SOON TO HOWICK LITTLE THEATRE

NOV 11 TO DEC 2

A COMEDY BY NORM FOSTER

DIRECTED BY TRACEY HOLDSWORTH

OLD LOVE

Broken hearts and second chances

HOWICK LITTLE THEATRE | WEB.HLT.NZ | PHONE 534 1401 | EMAIL INFO@HLT.ORG.NZ | BOOK ONLINE ITICKET.CO.NZ

WIN
free childcare
for a year*



Come visit our open day!

Just Kidz, 17a Bell Road, Beachlands
Saturday 28th October 9am- 3pm

You are welcome to visit anytime
if you can't make our open day.



- See what Just Kidz can offer your child
- Meet our friendly teachers
- Grab a free family photo
- Complimentary barista coffee
- Free lucky dips for all children
- Get your face painted and take home some balloon art!

*Terms & conditions apply

justkidz.co.nz
09 242 2620



JUST KIDZ
a fun place to learn



SPORTS – END OF YEAR PRIZEGIVING WINNERS & RESULTS

Beachlands Maraetai Football Club



First Kicks 1: Cooper Wood (POTY*), Lachlan Place (MI*)
First Kicks 2: Lucas Esam (POTY), Carter Piho (MI)
First Kicks 3: Quinn Krishna (POTY), Logan Bradley Page (MI)
First Kicks 4: Quinn Wordsworth (POTY), Karwyn Norris (MI)
Fun Football 1: Tighe Cleary (POTY), Connor Hay (MI)
Fun Football 2: Alaric Logie (POTY), Aiden Fullerton (MI)
Fun Football 3 Blueberry Penguins: Molly Cleary (POTY), Grace Tegg (MI)
Fun Football 4 Coastal Cobras: Navsimrat Badwal (POTY), Nixon Somerville (MI)
Fun Football 5 Beachlands Dynamite: Caleb Treanor (POTY), Lukas Snyman (MI)
Fun Football 6 Blue Strikers: Siena Coupe (POTY), Gideon Otte (MI)
9th Grade Black: Ryan Mewatt (POTY), Oliver Pearson-Nutt (MI), Zachary O'Donnell (S)
9th Grade White: Tom Hamilton (POTY), Krishan Govinder (MI), Julian Stretton (S)
9th Grade Blue: Noah Krishna (POTY), Max Kenny (MI), Mitchell Terry (S)
9th Grade Red: Trenton Balemi (POTY), Marko Rakovics (MI), Rocco Laing (S)
10th Grade Blue: Ben Knoesen (POTY), Fletcher Terry (MI), Ashton Somerville (S)
10th Grade Black: Izak Lukac (POTY), Cian Overend (MI), Arav Patel (S)
11th Grade Black: Elijah Becker (POTY), Noah Tutt (MI), Jack Mason (S)
11th Grade White: Leander Beuke (POTY), Jake Lawless (MI), Ben Pond (S)
11th Grade Blue Goats: Maddox Tudman (POTY), Hamish Chapman (MI), Zachary Stockton (S)
11th Grade Girls Orcas: Isla Gunnell (POTY), Clara Beesley (MI), Sabella Rogers (S)
12th Grade Girls Diamond Cats: Indie Gordon (POTY), Scarlett Cosford (MI), Alannah Strang (S)
12th Grade Black: Ryan Batton (POTY), Ben France (MI), Noah Lukac (S)
12th Grade Blue: Samuel Li (POTY), Carlos Chesnutt (MI), Elijah Matson (S)
13th Grade Blue: Bailey Robson (POTY), Daniel Fanelli (MI), Charlie Davies (S), Sam Gunnell (GB)
14th Grade Blue: Te Arika Coley (POTY), Soham Patel (MI), Kieran Stewart (S) Ryan "Rhino" Walton (GB)
14th Grade Girls: Lexie Taituha (POTY), Angela Choi (MI), Bianca Smith (S), Isla Tutt
16th Grade Girls Rebels: Hailey Douglas (POTY), Frankie Burton (MI), Jess Batey (S), Caitlyn May (GB)
Senior Women: Zara Ellis (POTY), Sophie Loader (S), Rebecca Ripley (GB) Alaya Naidoo (PP) Poppy van Rensburg (DA)
Senior Men - NRFL U23: Callum Campbell (POTY), Todd Carruthers (S), Archie Hutchinson (GB), Callum Campbell (PP), Hamish Robinson (DA)
Senior Men - NRFL: Aaron Parry (POTY), Liam Hare (S), Aaron Parry (GB), Liam Hare (PP)
Over 40 - Rebels: Brendan Kerwick (POTY), Ben Taylor (S), Ben Taylor (GB), James Chadfield (PP)
Over 40 - Legionnaires: Irish (POTY), Teen Wolf (S), Jake (GB), Jamie (PP)
Over 40 - Coasters: Mark Corboy (S), Mark Corboy (GB), Mark Lowe (PP), Carlos Ramsay (NON Daft Award)
Over 40 - Lions: Matt Stephens (POTY), Chris Martin (S), Simon Murray (GB), Jacob Nyathi (PP), Luca Milantoni (DA)

* POTY - Player of the Year; * MI - Most Improved;
 * S - Sportsperson of the Year; * GB - Golden Boot;
 * PP - Players Player of the Year; * DA - Daft Award

Trophies/Cups:

Pete Wilson Trophy - Angela Stewart
 Coach of the Year - Richard Jacobs
 Most Promising Male Player of the Year 13th-17th Grade - Bailey Robson
 Most Promising Female Player of the Year 13th-17th Grade - Isla Tutt
 Player of the Year Male 13th-17th Grade - Kieran Stewart
 Player of the Year Female 13th-17th Grade - Lexie Taituha
 Youth Team of the Year - U10 Blue
 10th Grade Most Improved - Stella Skeleton
 Ray Herring Cup - Caitlyn May
 Senior Sportsperson of the Year - Adam Parks
 Mark Bignell Trophy - David Smith
 Henri Harbraken Female Team of the Year - U14 Girls
 Tony Chapman Memorial Trophy - Mark Sturgess
 Whole of Football Plan Coach of the Year - Jesse Cleave
 Golden Boot Senior Mens - Ben Taylor & Jake Hutchinson
 Golden Boot Ladies - Isla Tutt
 Team of the Year - Legionnaires
 Golden Gloves - Bianca Smith
 Golden Gloves - Mike Peters
 Founding Presidents Award - David Smith

Clevedon Football Club



U5 COMETS - Player of the Year: MADIX WILLIAMS, Most Improved Player: ALEXIS MILLAR;
U6 CARDINALS - Player of the Year: SAM TUCK, Most Improved Player: KATE CASHMORE; **U7 CADETS** - Player of the Year: ARLO SEARLE, Most Improved Player: ALIYAH MEYER, Commitment: DEVON MATHESON; **U8 CHIEFS T** - Player of the Year: JUDE MILNE, Most Improved Player: FERGUS NIELSEN-VICKERS; **U8 CHIEFS H** - Player of the Year: EDEN FEARNESIDE, Most Improved Player: THOM BARCLAY; **U9 CYCLONES** - Player of the Year: COOPER MILLAR, Most Improved Player: JACK HARRIS; **U10 COLTS** - Player of the Year: ARCHIE SNEDDON, Most consistent Player: JAMES ILICH, Defender of the Year: LENNOX SELBY; **U11 CHEETAHS** - Player of the Year: ADI WHITE, Most Improved Player: JACOB NELSON; **U12 COBRAS** - Coaches Cup: HUNTER MURDOCH, Sportsman of the Year: JESSE ALLEN, Most Valuable Player: JASPER WHITE, Defender of the Year: ED BURTON;
TEAM OF THE YEAR – U11 CHEETAHS; **VOLUNTEER OF THE YEAR** – SUMMER DEVERELL

Beachlands Maraetai Junior Rugby



BMRC Season Results:

U6 Orange: MVP Hunter Kenny, MIP Emily Stickland, Sportsperson Katalina Seve
U6 Navy: MVP Isabelle Mitchell, MIP Jacob Ething, Sportsperson Noah Tuyay
U7: MVP Logan Marshall, MIP Nico Maya, Sportsperson Cruze Jacobs
U8 Orange Cheetahs: MVP James Becker, MIP Dylan Ross, Sportsperson Kiran Narula
U8 Navy: MVP Lewis Farrell, MIP Mitchell Kendrick, Sportsperson Jeremy Adendorff
U9 Red Raptors: MVP Liam Strong, MIP Blake Kitchener, Sportsperson Jaxon Smith
U9 Navy Makos: MVP Tayton Nightingale, MIP Lewis Galloway, Sportsperson Matthew Nel
U10 Orange: MVP Jordan Peterson, MIP Taylor Robertson, Sportsperson Caleb Rowson
U10 Navy: MVP Luke Saville, MIP George Skinner, Sportsperson Daniel Metcalf
U11 Navy Thunders: MVP Max Mcqueen, MIP Sam Lowe, Sportsperson Jacob Fawdrey
U12 Orange: MVP Dylan Overend, MIP Cooper Murray, Sportsperson Corey Gibson
U12 Navy: MVP Astin Wilson, MIP Joshua Johnson, Sportsperson Chase Dexter
U9 Rippa Girls: MVP Maddie White, MIP Ava Houareau, Sportsperson Abbey Frewin
U11 Rippa Girls: MVP Phoebe Keily, MIP Ayjah Bowie, Sportsperson Georgia Dalbeth
U13 Rippa Girls: MVP Eva MacDonald, MIP Evie Dinah, Sportsperson Shaniquah Plummer
U15 Rippa Girls: MVP Georgie Hamilton, MIP Lily Vickers, Sportsperson Emily Frewin
Other Trophies:
 Team of the Year: U9 Raptors, Family Cup: Munro family, Coach of the Year: Jaimie Dexter, Great Champ Cup: Stephanie Mclean

Pohutukawa Coast Netball Club



Year 5 Silvereyes: Maggie Cooper (MVP*), Lucy Hayes (S*), Alessandra Wilson (MI*)
Year 5 Kiwis: Summer Rewha (MVP), Iris Boggs (S), Jemma Brooke (MI)
Year 6 Keas: Elayna Coates (MVP), Sophie Westran (S), Mila Martinovich (MI)
Year 6 Tuks: Elisabeth Bastin (MVP), Zoe Marshall (S), Imogen White (MI)
Year 6 Fantails: Layla Rutherford (MVP), Teagan Cleary (S), Sienna Peake (MI)
J1: Honor Rewha (MVP), Pippa Underwood (S), Charlotte Cook (MI)
J2: Michaela Clark (MVP), Chloe Ronberg (S), Kaylee Mills (MI)
J3: Sienna Blase (MVP), Seren Liebenberg (S), Zara Dilworth (MI)
J4: Madeleine Jeffries (MVP), Mia Soares (S), Courtney Westwood (MI)
C1: Cici Hunia (MVP), Maia Jeffries (S), Alyssa Roding (MI)
C2: Mia Taurima (MVP), Amelia Davis (S), Ella Searle (MI)
C3: Amy Kahl (MVP), Eden Ross (S), Amy Coetzee (MI)
S1: Ravinder Hunia (MVP), Christina Trow (S), Lilly Morton (MI)
S2: Lucy Sizemore (MVP), Olivia Creed (S), Caprice Howes (MI)
S3: Kim Hunter (MVP), Jen Gulliver (S), Abby Smith (Most Consistent)
S4: Maia Biddulph & Kelly Hill (MVP), Jaimee McLindon (S), Belinda Meszaros (MI)

* MVP - Most Valuable Player; * S - Sportsmanship; * MI - Most improved

2023 College Player of the Year: Cici Hunia
 2023 Presidents Cup: Andrea Matson
 2023 Coach of the Year: Wendy Milner
 2023 Umpires Cup: Ashlee Sinclair
 2023 Junior Player of the Year: Honor Rewha
 2023 College Contribution Cup: Chelsea Beere
 2023 Best Club Personality: Charne Pairama
 2023 Future Ferns Coach of the Year: Izzy Smith
 2023 Supreme Player Award: Christina Trow



Junior Player of the Year, Honor Rewha



NEW LISTING



Hunua 150A White Road

Affordable lifestyle living

This striking architectural designed home is nestled in a peaceful rural setting situated on popular White Road just minutes from Hunua and Clevedon Villages. Enjoying wraparound rural views, stunning raked ceilings, a blissful feeling of light and space and is so private. The kitchen is just divine and the heart of the home and comes complete with free-standing four oven Smeg range for the serious chef and a huge walk-in pantry. The master suite opens out to a private deck setting with fire pit and bubbling spa pool and the stunning portico provides for sheltered outdoor entertaining. The land is a very manageable 2.4 acres (9986 sqm more or less) - room for a pony, some sheep or cows or the keen gardener can create a park-like setting. If you want to escape to the country but enjoy modern living, this home could be the one.

bayleys.co.nz/5102426

4 2 2 1

Set Sale Date (unless sold prior)
 4pm, Thu 16 Nov 2023
 1/42 Wakelin Road, Beachlands, Auckland
View Sun 2.30-3.15pm
Clare Dower 021 20 66 822
Peter Sullivan 021 733 278
Kristina Liu 021 195 4442

BAYLEYS REAL ESTATE LTD, BEACHLANDS, LICENSED UNDER THE REA ACT 2008
 BAYLEYS REAL ESTATE LTD, HOWICK, LICENSED UNDER THE REA ACT 2008



Beachlands 37 Liberty Crescent

Designer home, expansive sea views

Set well back from the road and positioned on its large section to maximise its superb sea views this new to the market home has come to the market as its owners look at new opportunities. Offering two living areas, both with uninterrupted sea views, a state-of-the-art kitchen, dining area plus four bedrooms with an additional separate office this home must be first on your list to view. Enjoy the indoor-outdoor living with family and friends that flows from the downstairs living area. Ideal for a multi-generational family with a master bedroom and ensuite on the lower level this immaculately presented home also offers another master bedroom on the upper level with ensuite and sensational views over the Tamaki Straits. Two further bedrooms on the upper level complete this family-friendly home.

bayleys.co.nz/5102346

4 2 3 2

Auction (unless sold prior) 2pm, Tue 7 Nov 2023
 85 Picton Street, Howick, Auckland
View Sun 11-11.30am
Alan Tucker 021 991 639
Natalie Harvey 021 308 897
Sue Tucker 021 033 1882

BAYLEYS REAL ESTATE LTD, BEACHLANDS, LICENSED UNDER THE REA ACT 2008
 BAYLEYS REAL ESTATE LTD, HOWICK, LICENSED UNDER THE REA ACT 2008

Sunflowers concert to raise funds for Ukrainians affected by war

Former Ukrainian citizen Valeriy Boyko moved to Beachlands a few years ago, and over the past 15 months has been doing all he can to help the plight of everyday Ukrainians who have been affected by Russia's invasion of Ukraine. Now he is organising a fundraising concert on 3 November, which he hopes many local residents will support.

Since setting up a Givealittle platform last year, Valeriy, his wife Elena Boyko and long term friend Alena Artyukh, have formed an action group called NZ4UA, which has organised several shipments of immediate first aid kits, tourniquets, trauma bandages, emergency medicines and hygiene products, anti fungal, anti inflammatory, anti infective and bleeding control agents, as well as some surgical equipment. They have also sourced and supplied tonnes of canned food to Ukrainian centres caring for displaced people and to the people remaining/living close to a war zone in East and South of Ukraine.

They have procured and delivered hundreds of clothing items for children and adults including new thermals, beanies, gloves, underwear, socks, nappies and hygiene products donated by retailers, and a "significant" donation of woollen jerseys, socks, beanies for babies and children, warm jackets for kids, thermal blankets / wraps, thermal tops and pants

for children donated by the East Auckland community and shipped to the Ukraine in time for the onset of winter.

Their donations are based on what is needed at the time, and they are now looking at raising funds for two new projects, a mobile dental care unit and a hot line plus a direct psychological support unit.

"The dental care unit already exists and operates in close to the Red Zone area and in newly liberated areas providing dental care for those who have not seen a dentist for months," says Valeriy.

"We are going to provide or assist with procurement of medical consumables, filling materials, etc. The dental team will consist of medical volunteers.

"The psychological support unit is in set up stage. The main purpose is to provide professional psychological assistance to those who have lost their husbands, sons, mothers, daughters, kids or parents during this illegal and awful war.

"Professional psychologists (also volunteers) are expected to travel across various parts of Ukraine for face to face interactions with their patients or group of patients, should on-line sessions not be sufficient."

NZ4UA is now fundraising for the dental and psychological support units with a fundraising concert event called 'Sunflowers' to be held at St Columba

Church, 480 Ti Rakau Drive, Botany on Friday 3 November.

Valeriy says the Sunflowers Concert will be an evening of quality music, to stand with people of Ukraine and support those who have been directly affected by the war.

The concert will blend jazz, soul, folk, popular and Ukrainian music, featuring musical and cultural performances by local musicians and artists who have all donated their time for the event. Tickets are available from Eventbrite (search 'Sunflowers') from \$20, with children under 14 free (accompanied by adults). It is a 'first come first seated' event with doors opening at 6.30pm and the concert beginning at 7pm.

"We are so grateful for receiving an outpouring of support from our local East Auckland community," says Valeriy.

Anyone wish to support the cause can

SUNFLOWERS

Fundraising Concert for Ukraine





Featuring:
Howick Brass Band
The Up Doos
Dasha Volga
Ant Hunt & Panacea
Natasha Hine Doula Kids Show
John Olding & Co.
Back to the Hillside
Sergiy Klymchuk
Yuriy Gladun

Friday 3rd Nov.
7pm - 9:15pm

St. Columba Church
480 Ti Rakau Drive, Botany

Tickets from \$20:
[eventbrite.co.nz](https://www.eventbrite.co.nz)
Kids under 14 free

NZ 4 UA - Medical and Humanitarian Help for Ukraine



donate via Givealittle: [givealittle.co.nz/cause/medical-and-humanitarian-help-for-ukraine](https://www.givealittle.co.nz/cause/medical-and-humanitarian-help-for-ukraine) or directly to the fundraising account NZ4UA 12-3118-0515169-00.

PŌHUTUKAWA LANDING

Looking for a coastal retirement?

Pōhutukawa Landing offers the best of all worlds in Beachlands: a relaxed coastal setting, bustling village life and urban conveniences nearby. Now is the time to secure your home in this harbourside community, with apartments from \$690,000[^].

- **For the life you want to live**
Call Jo Ashby on 0800 600 701
pohutukawalandingsales@metlifecare.co.nz
3 Seventh View Avenue, Beachlands
[pohutukawalanding.co.nz](https://www.pohutukawalanding.co.nz)



metlifecare

Five-star facilities now open

Wellness Centre including indoor heated swimming pool, spa, gym and hair salon

Games room, library and lounge with fireplace

Café, bar and indoor and outdoor dining areas

Pavilion, pétanque terrain and village gardens

\$25,000 cash back
and 12 months
free village fees
on apartments*

[^] Price is for an Occupation Right Agreement secured by a first ranking mortgage in favour of the statutory supervisor on behalf of the residents. Price valid for 30 days from time of printing. Stock availability subject to change. Car park not included in apartment pricing. Product images are indicative only.

* Offer available for new residents applying for selected apartments only. To qualify you must settle on the participating apartment by 15 December 2023. A monthly credit equal to 100% of the value of your village fees will be provided for your first 12 months in the village and \$25,000 will be credited to the capital sum on settlement. Offer is not a discount to the capital sum and is not redeemable for cash. Metlifecare reserves the right to retain the cashback if the ORA is cancelled during the cooling off period or under the 90-day Money Back Guarantee (see ORA for further details). Further terms apply, see your local Sales Executive to find out more.

27 October 2023

For the best results in today's market, deal with Ray White Beachlands
Market leaders on the coast



The Spring Collection - A Selection of the Finest Properties on the Coast
Check Out Our Full Range of Stunning Properties Online:
rwbeachlands.co.nz



AUCTION

6 Doidge Street, Beachlands

Dreams Do Come True - Are you in search of the ideal family home that seamlessly blends modern design, spacious living and an unbeatable location? Look no further! This beautifully designed home by Fletcher Living is the answer to your dreams. The open-concept kitchen, living and dining space seamlessly connects to a covered patio, creating the ideal atmosphere for entertaining friends and family. With double glazing and a central vacuum system, comfort and ease of living are guaranteed. Don't miss this opportunity, your dream home awaits!

rwbeachlands.co.nz/BCH30749

Lighthouse Real Estate Ltd Licensed (REAA 2008)

4 🚗 1 🍴 2 🚿 2 🛏 2 🏠 800 sqm

Auction

The Shed @ Ray White Beachlands
6:00 pm Monday 30 October 2023
(Unless Sold Prior)

View

Saturday & Sunday
12:45 - 1:15 pm



Brianne Bignell

021 400 979
brianne.bignell@raywhite.com

ALAN WHITE
ELITE
PERFORMER 22-23



Paula Kirkman

021 0290 8007
paula.kirkman@raywhite.com

WHY WAIT?



FOR SALE

14B Marine Garden Crescent, Beachlands

Stunning Start - Nestled within Beachlands most recent subdivision, this stunning property crafted by Fletcher Homes, boasts an array of luxurious features in an exceptional location.

This low-maintenance home is designed with your convenience in mind, giving you more time to enjoy the beautiful Beachlands lifestyle. Whether you're a first-time buyer, an astute investor or looking to downsize in style, this property offers it all.

rwbeachlands.co.nz/BCH30728

Lighthouse Real Estate Ltd Licensed (REAA 2008)

3 1 2 1 1 400

For Sale
\$1,160,000

View
Saturday & Sunday
12:00 - 12:30 pm



Brianne Bignell
021 400 979
brianne.bignell@raywhite.com

ALAN WHITE
ELITE
PERFORMER 22-23



Conor Duffy
021 022 83366
conor.duffy@raywhite.com

WHY WAIT?



AUCTION

78 Seventh View Avenue, Beachlands

This is more than just a home; it's a lifestyle upgrade. Whether you're seeking a serene retreat or an entertainer's paradise, this home has it all.

From the moment you step inside, you'll be captivated by the spacious and inviting open plan living, kitchen, and dining area that seamlessly flows together. Step out to the covered entertaining area, where you can enjoy outdoor living all year round. Whether it's a summer barbecue or a cozy winter gathering, this space is designed to delight.

Don't miss the opportunity to make this exceptional property your new home.

rwbeachlands.co.nz/BCH30732

Lighthouse Real Estate Ltd Licensed (REAA 2008)

4 1 2 1 1 1 2 749

For Sale



Brianne Bignell
021 400 979
brianne.bignell@raywhite.com

ALAN WHITE
ELITE
PERFORMER 22-23



Paula Kirkman
021 0290 8007
paula.kirkman@raywhite.com

WHY WAIT?

Support Local!

SPONSORED CONTENT

Welcome to Southern Autos Botany!

- by Southern Autos Botany

Are you in the market for a new Suzuki or Isuzu vehicle, a high-quality used vehicle, or dependable vehicle servicing? Look no further than Southern Autos Botany, your premier destination for all things automotive. Conveniently located at 271 Botany Road, we're here to help you find the perfect vehicle to suit your needs. We also offer competitive trade-in and finance solutions to make your dream car a reality.

When it comes to new vehicles, Southern Autos Botany is proud to be your authorized dealer for Suzuki and Isuzu. Suzuki vehicles are renowned for their fuel efficiency and compact designs. From the zippy Suzuki Swift to the spacious Suzuki Vitara, we have a model to match your lifestyle. Isuzu, on the other hand, is a name synonymous with ruggedness and durability. Whether you need a tough pickup like the Isuzu D-Max or a versatile SUV like the Isuzu MU-X, we've got you covered.



Southern Autos Botany boasts an extensive inventory of pre-owned vehicles from various makes and models. Each used vehicle undergoes a meticulous inspection process to ensure it meets our strict standards for quality, safety and performance.

Our commitment to customer satisfaction extends beyond the showroom floor. Southern Autos Botany also provides comprehensive vehicle servicing. From routine oil changes to complex repairs, our expert technicians handle it with

precision and care. Plus, we only use genuine parts for Suzuki and Isuzu vehicles to guarantee the longevity of your vehicle.

So, what are you waiting for?! You can call us on 09 884 8598 to speak with one of our Sales Consultants, or 09 884 8599 to book in your vehicle for a service. Alternatively, you can visit www.southernautos.co.nz to get more information.

We look forward to hearing from you soon,

Southern Autos Botany

ISUZU

NEW & USED VEHICLES

COMPETITIVE TRADE IN PRICES

EASY ONSITE FINANCE

\$200 PETROL VOUCHER WITH EVERY CAR PURCHASED**

ISUZU SERVICE SPECIAL \$319*

BOOK YOUR SERVICE TODAY

OPEN 7 DAYS A WEEK

SOUTHERN AUTOS | Botany
271 Botany Road, Golflands Ph. 09 884 8324

* Terms & Conditions apply ** Bring this advert to Southern Autos Botany to claim the Service Special and \$200 Petrol Voucher with purchase.

Support Local!

SPONSORED CONTENT

Auckland Council seeks feedback about your local parks

What is it that you like or dislike about your local park?

Auckland Council wants to know.

Council has embarked on a project to replace all of its existings plans for managing local parks in the Franklin Local Board area.

Described as “a handshake with the community”, the new local parks management plan (LPMP) is aimed at guiding use, management and protection of the land, focusing on identifying opportunities within local parks, and managing what can and can't happen within them.

Council wants to hear what people think about their local parks - what's good, what's bad, and what opportunities

might exist. Does a park have special ecological or cultural significance? Is it a good place for dogs? Is it unsafe? Could it do with more regular mowing?

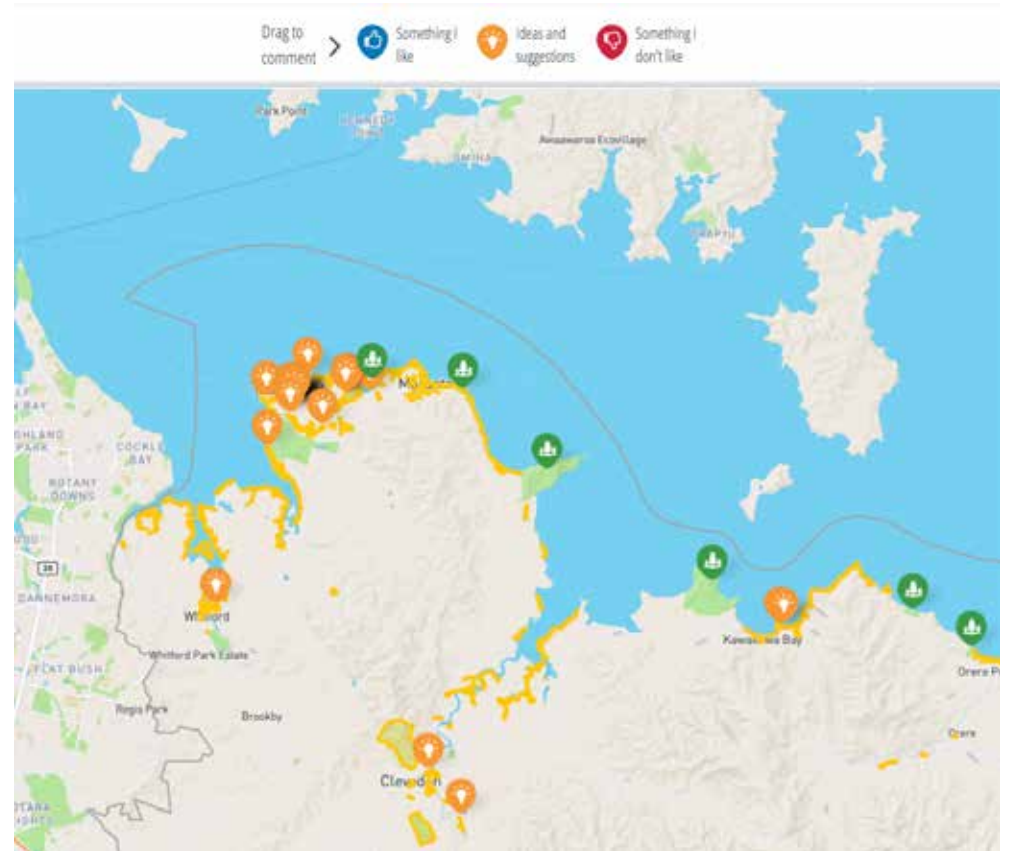
The LPMP applies to all local parks, excluding road reserves, regional parks, conservation land, cemeteries, and parkland owned and managed by other entities.

Some example of local parks include the Ken Parker Reserve (Beachlands), Adah Platts Mills Reserve (Maraetai) and Whitford Point (Kawakawa Bay).

Every local park within the Franklin Local Board's area - at least 190 parks - will be documented and included within the new plan.

The plan will provide a clear framework for park development and use, and will include high level guidance for activities such as ecological, cultural and heritage protection, events, climate change, Kauri dieback and pest management, volunteer work, recreational uses, community leases and licences commercial activities and more.

The easiest way to give feedback about your local parks is to search online for Franklin Local Parks Management Plan,



Council's interactive map lets you give feedback about your local park. The orange pinpoints show where people have already left comments about local parks.

and visit the online interactive map which allows you to add comments about a park directly on the map. Alternatively,

you can give feedback by email to franklinlmpm@aucklandcouncil.govt.nz. Consultation closes 12 November 2023.

WHITE FENCING

0800 957 868

Registered Fencing Contractor, No. 702

ph: (09) 2928 064
mob: (0274) 957 868
Fax: (09) 2928 063
TDWKKC@xtra.co.nz

428 Kawakawa Bay Rd
Clevedon
RD5 PAPAURA

TONY WHITE

ALL TYPES OF RURAL FENCING & ASSOCIATED WORKS

TERM 4 2023 TIMETABLE

Monday	Tuesday	Wednesday	Thursday	Friday
JUMPING JUNIORS 1-4yrs / 11.00 -11.45am \$105	FREE BADMINTON 9.30 - 11.30am Stadium	SENIOR CIRCUIT 9.00 - 10.00am Stadium \$7 / \$60 for 10	PILATES 9.00 - 10.00am Function Room \$13/\$100 for 10	SENIOR CIRCUIT 10.00 -11.00am Stadium \$7 / \$60 for 10
GYM SKILLS 5-6yrs / 3.30 - 4.30pm \$140	FREE RUMMIKUB 1.00 - 4.00pm Clubrooms	MAHJONG 10.00 - 12.00pm Function Room \$2	JUMPING JUNIORS 1-4yrs / 9.15 - 10.00am \$105	
GYM SKILLS 5+yrs / 4.30 - 5.30pm \$140	FREE TABLE TENNIS 1.30 - 3.30pm Stadium (During school term only)	FREE BADMINTON 10.00 - 12.00pm Stadium (During school term only)	GYM SKILLS 5-6yrs / 4.00 - 5.00pm \$140	
GYMFEST 9+yrs / 5.30 - 6.30pm \$140	BASKETBALL (PCBC) 4.00 - 9.00 pm 5yrs+ Club fee applies	PARKOUR 5+yrs Club Fee applies	GYMFEST 7+yrs / 5.00 - 6.00pm \$140	
PARKOUR 5+yrs Club fee applies	PARKOUR 5+yrs Club fee applies		TUMBLING Beginners 5-6yrs / 4.00 - 5.00pm \$140	
YOGA 6.00 – 7.00pm Function Room \$16 / \$150 for 10		SENIOR SOCIAL 10.00 am First Wednesday of the month Clubrooms	TUMBLING Intermediate 7+yrs / 5.00 - 6.00pm \$140	
BADMINTON and TABLE TENNIS 7.30 - 9.30pm Stadium \$7 casual			TUMBLING Advanced 9+yrs / 6.00 - 7.00pm \$140	



For more information please visit www.tepuru.co.nz



Support Local!

SPONSORED CONTENT

“My dog is itchy”: Franklin Vets explains some common causes

- by Franklin Vets

“My dog is itchy.” This is one of the most common phrases heard in vet clinics during the summertime.

The dog’s coat can look normal, but often the skin is red, or grey-black and sticky. It can also have areas that are crusty and ooze a little, and occasionally you can see dandruff. Some dogs have concurrent ear infections and sore feet as well. They look miserable and can be quite unwell.

Fleas are generally the culprits, and you can usually detect these by looking through the coat over the dog’s back just in front of the tail. If you see fleas or small black crumbs (flea droppings), then all you might need is flea control. Excellent flea control products are Bravecto, NexGard Spectra and Simparica Trio, which all treat more than just fleas.

However, once the skin gets damaged from continuous scratching and biting, it starts to become more challenging to find out what the cause is. Sometimes skin damage can be secondary to contact allergies (Kikuya grass and Wandering Jew are high on this list), or infection (parasites, bacteria, yeast, fungi, viral), which can be treated

accordingly with anti-itch medication, antibiotics, and medicated shampoo. Dogs with recurring yeast infections in their ears often do very well on BlackHawk fish and potato biscuits or Royal Canin Skintopic.

Most dogs recover fine after treatment or diet change.

However, just like people, some dogs may have more serious underlying medical problems that need to be diagnosed if treatment is going to be successful. If a skin condition does not clear up or recurs frequently, then your vet can investigate further. Blood and urine tests can be done to assess a pet’s overall health and check for hormonal diseases (like thyroid or Cushing’s disease), often followed by skin scrapings, skin biopsies for histopathology, or ruling out food allergies with dietary trials. Alternatively, they can offer a referral to a skin specialist for further workup or allergy testing.

If you are getting a new pup, always try to see the pup’s parents, as skin issues can be inherited. Start pet insurance as soon as possible to avoid exclusion of preexisting conditions.



Itchy dogs can be expensive to treat, and sometimes a cause cannot be found. Fortunately, these days there are several anti-itch drugs available (Apoquel, Cytopoint) to treat chronic itchy dogs before they damage themselves, and with careful

management, these dogs can have healthy and happy lives too.

Don’t hesitate to call the friendly team at Franklin Vets Beachlands if you have any questions. Phone 09 538 0010.





smile dental
Beachlands

We are open!





NEW PATIENTS WELCOME
QUALITY AFFORDABLE FAMILY DENTISTRY

Smile Dental is New Zealand’s largest dentist owned dental group with 17 modern innovative clinics in Auckland and Palmerston North.

- | Free Exam* | Free ACC & Social welfare quotation |
- | Free adolescent dental care | White Fillings |
- | Crowns | Veneers | Dental Implants | Invisalign |
- | Wisdom tooth surgery | Botox & dermal Filler |

FREE CHECKUP
AND
WINZ QUOTATION

Address:
129 Beachlands Rd,
Beachlands
Auckland

www.smiledental.co.nz  09 302 0808

| Albany | CBD | Henderson | Avondale | Te Atatu | Ranui | Remuera | Onehunga | Sylvia Park | Mangere | East Tamaki | Somerville | Beachlands | Manukau | Takapuna | Papakura | Palmerston North |



FRANKLINvets

Our services for your pet

Our BESTPRACTICE Beachlands clinic offers:

- Health checks and nail trims
- Vaccinations
- Free Nurse dental and weight checks
- Acupuncture
- Elective, emergency and exploratory surgery
- Dental procedures
- Post-operative intensive care, oxygen, fluids, X-rays and blood testing all on site if required






1/43 KOUKA RD, POHUTUKAWA COAST
SHOPPING CENTRE
PH 538 0010 | BEACHLANDS@FVS.CO.NZ
f@FranklinVetsPets @FranklinVets
Book online @ WWW.FRANKLINVETS.CO.NZ
Open hours: Mon-Fri 8am-6pm, Sat 9am-3pm



FOOD & ENTERTAINMENT GUIDE

4 Traditional Pizzas and 4 Sides DELIVERED from \$59.90 ONLINE CODE 22861* **Open: Sun-Thu 11am-9:30pm**
 *T&Cs apply. **Fri & Sat 11am-10pm**
Ph: 0800 30 40 50 or 09 951 3959
 www.dominos.co.nz
 E: beachlandsdom@gmail.com




THAI PASSION
Beachlands



THAI RESTAURANT
 6 nights Dinner Dine-in & Takeaway
 Tue-Sun 5pm till late | Mon Closed
 Online Order: onlineorder.me
www.thaipassion.co.nz
 09 218 3888 | 45 Wakelin Road, Beachlands




DINING • WEDDINGS • FUNCTIONS
 424 Creightons Rd, Clevedon, Auckland 2582
 PH 09 292 8845 • enquiries@vinalto.co.nz
 OPEN: Thur and Fri 5pm - late
 Saturday 12pm - late, Sunday 12pm -4pm



THE FRANKLIN
TAPHOUSE & KITCHEN

Open 7 days from 12pm-late
 Woodfired pizzas
 Fri/Sat/Sun 12pm-late

BOOKINGS RECOMMENDED
Ph: 536 5978
www.thefranklinpub.co.nz



(09) 536 4151
 Monday to Friday 10:00am - 11:00pm
 Saturday & Sunday 8:00am - 11:00pm
 44 Third View Ave, Beachlands
 The best of European Cuisine



SUNKIST
BAR • KITCHEN

OPENING HOURS
 Tuesday - Thursday: 3-10pm
 Friday - Sunday: 12pm till late
 027 208 6942
 190 Jack Lachlan, Pine Harbour

Small sharing plates
 Cocktails
 Marina view

HALLERTAU CLEVEDON
 26 CLEVEDON-KAWAKAWA RD, CLEVEDON, AUCKLAND — CLEVEDON@HALLERTAU.CO.NZ — 09 869 2989
 OPEN — MON & TUE: CLOSED — WED & THU: 4PM-10PM — FRI & SAT: 12PM-10PM — SUN: 11AM-9PM



Pōhutukawa Coast's only not-for-profit
 Chartered Club since 1948

Open 7 days a week
 Mon & Tues 4pm-Late
 Weds-Sun 3pm-Late

2 Weekly Membership Draws
 Fishing and 8 Ball Section
 Fortnightly Quiz Nights
 Free Pool & Darts
 Kids Room
 Gaming Lounge
 Free* Function Hire

ADVERTISE IN OUR FOOD & ENTERTAINMENT GUIDE, JUST \$20/WEEK. EMAIL ADVERTISING@PCTIMES.CO.NZ

BARFOOT & THOMPSON



PRICE REDUCED

WHITFORD

5 WAIKOPUA ROAD

Big Price Reduction

Multiple generations of the owner's family hold fond memories of growing up here. Our Vendors have met the market and offer this elevated 1.23 Ha More or Less of mixed contour with north facing sea and Rangitoto views and all day sunshine, plus a designated building platform. If you're looking for an opportunity to build and be close to Beachlands shopping precinct and only a short drive to Pine Harbour, come and have a look today.

FOR SALE
 \$1,190,000
barfoot.co.nz/830214

VIEWING
 Phone For Viewing Times



Matthew Brown
 027 549 4673
m.brown@barfoot.co.nz



Kathryn Morris
 027 486 3488
k.morris@barfoot.co.nz



ROMANDA BEUKES

Registered Dance Teacher
[A.I.D.T; D.A.S.A; T.D.A]

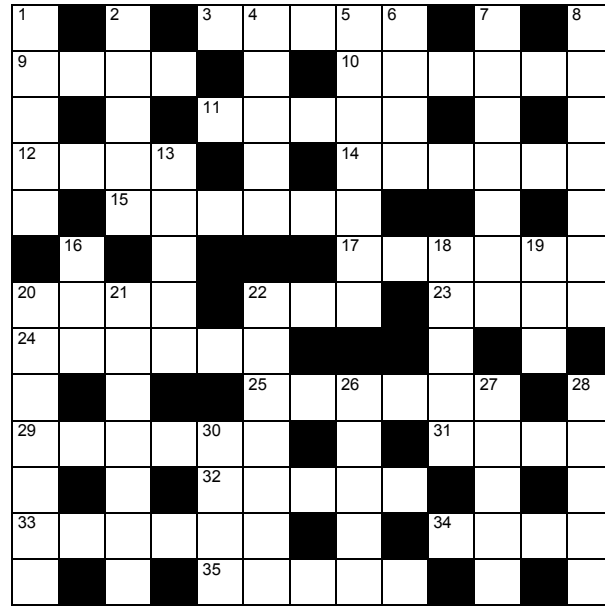
P: dancedynamixnz@gmail.com

E: 027-277-6257

A: Beachlands, Auckland

Ballet Modern Hip Hop

RAYWHITE BEACHLANDS CROSSWORD



Brianne Bignell
021 400 979
brianne.bignell@raywhite.com

RayWhite.

Across

- 3. Pointed (5)
- 9. Sacred (4)
- 10. Magic potion (6)
- 11. Pulped food (5)
- 12. Spectacle glass (4)
- 14. Non professional (6)
- 15. Slum (6)
- 17. Margin (6)
- 20. Adviser (4)
- 22. Cancelled (3)
- 23. Tidy (4)
- 24. Upset (6)
- 25. Redirect (6)
- 29. Neighbourhood (6)
- 31. Ripped (4)
- 32. Bird of prey (5)
- 33. Beam above a door or window (6)
- 34. Lazy (4)
- 35. Awkward person (5)

Down

- 1. Entire (5)
- 2. Informal language (5)
- 4. Spook (5)
- 5. Recite (4,3)
- 6. Petition (4)
- 7. Inspect (7)
- 8. Cheap piece of jewellery (7)
- 13. Lustre (5)
- 16. Through (3)
- 18. Motionless (5)
- 19. Silence (3)
- 20. Christ's disciple (7)
- 21. Break up (7)
- 22. Eccentric (7)
- 26. Male servant (5)
- 27. Hot alcoholic drink (5)
- 28. Postpone (5)
- 30. Offensive smell (4)

Answers on page 14

WE NEED YOUR HELP!

Pohutukawa Pippins and Brownies are on the hunt for some more amazing Unit Leaders. Brownies meet Wednesday's from 3:30-5:00 pm once per week during school term at Te Puru Sea Scout Hall, Maraetai. Pippins meet Wednesday's from 4:00-5:00 pm at Maraetai Tennis Club, Maraetai. If you would love to help our tamariki to build confidence whilst learning new skills, Please contact us today

Volunteer.enquiries@ggnz.org.nz
GIRLGUIDINGNZ.ORG.NZ



YOU BE THE GUIDE



4 Ninth Avenue, Pine Harbour, Auckland. Selling now from \$819,000

Take advantage of this opportunity to own a brand new property in a magnificent location within the stunning Pohutukawa Coast.

These thoughtfully designed townhouses consist of two bedrooms, open plan kitchen and living, outdoor area, carpark, and quality fixtures and fittings throughout.

Each home comes with the very important 10 Year Master Build Guarantee, giving you peace of mind when making such a significant investment.

Set in an admired location rich in history, Pine Harbour offers a fabulous lifestyle including coastal walkways with breathtaking views, access to picturesque beaches and reserves, Formosa Golf Resort, the marina, fishing, restaurants and shopping, plus the added bonus of Auckland's CBD only 35 minutes away by vehicle or commuter ferry.

Contact our local Sales Consultant, Gary Kirk: 021 856 680



For now. For then. Forever.

mikegreerhomes

mikegreerhomes.co.nz

Catch of the Week photo competition

The PC Times and GAS Maraetai Catch of the Week photo competition is back!

To enter the Catch of the Week photo competition, email your photo and details about your catch (where it was caught, name of the boat, what you did with the fish, plus any other special details) to liz@gasmaraetai.co.nz. The weekly winner will receive a \$50 Top Catch voucher from GAS Maraetai, and the season winner will receive a fishing rod and reel.



Right: Last season's winner, Addy Locksley



Student Voice

LOCAL STUDENTS' NEWS, VIEWS & LITERARY TALENT

This column features news, views and literary talents of students from Beachlands, Maraetai, Clevedon, Brookby, Hunua, Paparimu, Orere and Ardmere Schools.

One student featured each week will be presented with a certificate and a \$20 book voucher, thanks to Barfoot & Thompson's Beachlands and Whitford branches.

Costco shopping

At Costco everything was massive!

There were chips in a bag the size of Aaron (my little brother).

The birthday cake we bought was the size of the biggest bag of doritos, which was about the size of my t shirt.

(It fed my class and Mrs Weismas class, the teachers and I still took half of it home!)

There were giant ice blocks, as big as an A4 piece of paper, (they tasted soooo good).

There was enormous lush ham, giant bottles of coconut milk and water, amazing colossal bags of more super delicious yummy amazing Takis (they are spicy chips), awesome giant wieners (sausages), and even forbidden chips (a flavour that has been banned around the world - Burger Doritos - Street art edition.)

It was AWESOME but, ... there were so many people I couldn't speak.

- by Jack O'Brien, Year 3, Brookby School



This week's voucher sponsored by Wayne Rawson

Classified Ads

BUY/SELL

JEWELLERY WANTED TO BUY

Old gold, rings, broken chains, unwanted jewellery for scrap etc. Paul Taylor Jewellers, Shop C7 Pohutukawa Coast Shopping Center. Ph 536 4200

SITUATIONS VACANT

CLEVEDON MEDICAL CENTRE GP WANTED!

Fancy working in a beautiful part of semi-rural Auckland? Surrounded by cafés, beautiful scenery including native reserves and rolling green pastures? Close to beaches and only a stone's throw drive from major areas like Papakura, Karaka, Flatbush, Beachlands or Drury?

Clevedon Village needs another GP! We are offering flexible hours and brand new rooms with our current building renovation and no after hours work commitment.

This area is growing in all directions and we need to expand. If you would like to work with an efficient team and feel appreciated in your work with motivated patients, then contact us!

Email: Helen at administrator@clevedonmed.co.nz



WORK WANTED

CLEANING

Experienced, reliable and efficient. Available for one-off deep cleans, or weekly/fornightly cleaning. Great rates and friendly team. Phone or text Corbyn's Cleaners 021 217 7436, or find us on Facebook.

RENOVATIONS

Bathrooms, kitchens, toilets - build, tile, glass, flooring, plaster and paint. Start to finish. Exp. builder. Refs avail. Ph: Gary 021 90 30 20 or 536-6358. Oakes Build Landscape Maintenance. www.oakes.nz.

MOWER AND CHAINSAW REPAIRS

All small engine repairs, mowers, ride-on mowers, chainsaws, weedtrimmers, & chain saw sharpening. No job too small. Free pick-up local area only. Ph: 536 5621 or mob 027 308 7777.

PAINTING/PLASTERING

Interior and exterior quality painting. Refs available. Ph: Gary 021 90 30 20 or 536 6358.

READY GRASS/ LANDSCAPING

Specialising in ready-grass, seeding, lawn levelling, turf cutting & landscaping. Locally based Ph: Adam on 022 015 2805.

HANDYMAN

You name it... renovations, DVS installation, gardening, retaining, fencing, landscaping, trellis, light building and maintenance work. Ph Gary on 021 903 020 or 536 6358.

WINDOW CLEANING

Windows in/out, exterior house wash, gutter clearing. Exp operator, Ph: Keith at Panoramics on 0272 453 444 or 530 8136.

Professionals & Trades

BOATING & MARINE

Ovlov Marine Pine Harbour 09 536 5249 www.ovlov.co.nz

Sales and Service of outboard motors, inboards, sterndrives and IPS.

Situated in Pine Harbour Marina and mobile we can care for your vessel be it big or small.

Contact the team on 536 5249 or email on phil@ovlov.co.nz for service enquiries and partsph@ovlov.co.nz for spare parts.



BUILDERS

INNOVATE CONSTRUCTION

- NEW BUILD
- RENOVATIONS
- DECKS
- BATHROOMS

FOR ALL YOUR BUILDING NEEDS

Call Justin on: 021 460 011 justin@innovateconstruction.co.nz
Licensed Building Practitioner www.innovateconstruction.co.nz

DENTAL

Make the right choice about your dental care

We are dedicated to your personal well-being through dental health



- Teeth whitening
- All ceramic tooth filling materials using CerecAC omnicam, 3D technology
 - Permanent tooth replacements with dental implants
- For gum health and maintenance call our hygienists Shelley & Zahraa
 - All aspects of general dentistry

FREE DENTISTRY IS AVAILABLE FOR ALL YOUNG ADULTS
Eligible from Year 9 until their 18th birthday Contact us today to learn more
Evening appointments available
Call us now on 530 8461 or email: info@whitforddental.co.nz

Dentists: •Dr. Rick Parfitt B.D.S •Dr. Alex Lindsay B.D.S
•Dr. Maad Youhanna B.D.S
Hygienist: •Shelley Chadwick R.D.H •Zahraa Talib B.O.H
Whitford Village, Whitford

Whitford Dental Group
Driving Dentistry to Excellence



INTEREST-FREE DENTAL PAYMENT PLANS

Book online: www.marinadentists.co.nz 190 Jack Lachlan Drive, Beachlands
Call us: 09 535 1074



smile dental
giving you one more reason to smile

QUALITY AFFORDABLE FAMILY DENTISTRY

*FREE dental examinations
*excl. xrays



129 Beachlands Rd, Beachlands, Auckland

www.smiledental.co.nz 09 302 0808

Advertise here for \$30 weekly or \$35 fortnightly.

Ph: 021 026 14467 or email advertising@pctimes.co.nz

CROSSWORD ANSWERS

Across: 3. Sharp, 9. Holy, 10. Elixir, 11. Puree, 12. Lens, 14. Layman, 15. Ghetto, 17. Fringe, 20. Aide, 22. Off, 23. Neat, 24. Pained, 25. Divert, 29. Suburb, 31. Tore, 32. Eagle, 33. Lintel, 34. Idle, 35. Klutz.

Down: 1. Whole, 2. Slang, 4. Haunt, 5. Reel off, 6. Plea, 7. Examine, 8. Trinket, 13. Sheen, 16. Via, 18. Inert, 19. Gag, 20. Apostle, 21. Disband, 22. Oddball, 26. Valet, 27. Toddy, 28. Defer, 30. Reek.

Professionals & Trades

DRAINAGE & EARTHWORKS

POHUTUKAWA COAST EARTHMOVING



Diggers
Bobcats
Trucks

- Rural/Lifestyle- Farm races
- Land & site clearing
- Topsoil & metal supplies
- Rubbish removal
- House excavation
- Driveways
- Lawn laying
- Animal burial

Grant 0274 758 468 pcoastearthmoving@gmail.com

MECHANICAL REPAIRS

POHUTUKAWA MOTORS.co.nz



AA APPROVED REPAIRER,
AA BATTERY STOCKIST
MTA ASSURED

AA Motoring AA Motoring
Battery Stockist Roadservice Contractor

WE ARE YOUR LOCAL, HONEST AND TRUSTED AUTOMOTIVE REPAIRER. POP DOWN AND SEE US. WE'LL LOOK AFTER YOU AND YOUR VEHICLE.

- ALL MECHANICAL REPAIRS
- WOF
- BRAKES
- TYRES
- AUTOMOTIVE AIRCON SERVICING

57 THIRD VIEW AVENUE, BEACHLANDS
09 536 6664

TREE SERVICES

CALL NATHAN 021 196 6509

CHIPPING
LAND CLEARING
HEDGE TRIMMING



COASTAL CUTTERS
TREE CARE ON THE COAST

TREE PRUNING
TREE REMOVAL
STUMP GRINDING

FIND US ON FACEBOOK [@coastalcutters](https://www.facebook.com/coastalcutters)
coastalcutters@hotmail.com



Drainage Vision Limited

www.drainagevision.co.nz
Mike 027 593 0326

- Drain Unblocking
- CCTV Inspections
- Certified Drainlayer
- Vacuum Trucks
- Pipe & Cable Locations

ELECTRICIANS

Auckland Wide Electrical
Ph 536 6800
Your Local Registered Electricians



• Heat Pump /Aircon Installations
• Switchboard Upgrades & Rewiring
• TV Cabling and Aerial Installations
• New House Wiring and Renovations
• Water pumps • Hot Water
• Oven Repairs • Lighting and Switchgear

www.awe.co.nz • help@awe.co.nz • free quotes
Providing electrical services on the Pohutukawa Coast & throughout Auckland

MORTGAGE ADVISERS

Loan Market

New Zealand's widest range of lenders, in one place.

Toni Dawson, Mortgage Adviser
027 646 9269
toni.dawson@loanmarket.co.nz
NZ Financial Services Group Limited (FSP286965)

Find out more at adviser.loanmarket.co.nz/toni-dawson

DS TREES LTD



Land Clearing
Tree Maintenance
Tree removal
Stump Grinding
Hedge Care

Phone Doug
021537171 • 09 5378595
info@dstrees.co.nz
www.dstrees.co.nz

PAINTERS

AUCKLAND WIDE PAINTERS LTD

Ray Dougherty Owner
Premium Quality Painter
021 226 7750

Email: raydoc@xtra.co.nz • PO Box 281061, Maraetai 2148

Painting • Stopping • Residential • Commercial

JESSEP CONTRACTING
TREE WORK • CONSTRUCTION

Jessep Contracting Ltd
Your problem is our specialty

- Tree Work, Fine Pruning and Removals
- Shelterbelt Removals
- Stump grinding
- Palm Cleaning
- Landscaping, Truck, digger and bobcat hire
- Tree light installation

CALL PHIL FOR A FREE QUOTE
022 607 4455
CHECK OUT
jessepcontracting.co.nz

TYRES

TYREGUARD
PROTECTING YOUR JOURNEY

YOUR TRUE TYRE PROFESSIONAL ON THE COAST

- Friendly Reliable Service
- Locally Owned & Operated
- Over 20 Years Experience
- For ALL Your Tyre Needs

Agricultural, Batteries, Car / Passenger, Earthmover, Mag & Tyre Packages, Puncture Repairs, Truck / Commercial, Wheel Balancing, 4WD / Off Road, 24/7 After-Hours Callout

Call Mike 021 901 034 | sales@tyreguard.co.nz | www.tyreguard.co.nz

Pohutukawa ELECTRICAL



No job too small - No job too big!
Fast, reliable service.
Qualified lighting designer

PH: 536-4076 FREE Quotes
MOB: 021 769 964 www.pohutukawaelectrical.co.nz

ROOFING

ROOFING & SPOUTING NZ LTD
Delivering Quality & Durability



RE-ROOFING | NEW ROOFS | ROOF COATINGS
CONCRETE ROOF TILE SPECIALIST | CONCRETE TILE REPAIRS
GUTTER REPLACEMENT | INTERNAL GUTTER CONVERSION

0800 766 350 | www.roofingnz.co.nz | info@roofingnz.co.nz

VETERINARY

Franklin Vets Beachlands

1/43 Kouka Road,
Pohutukawa Coast
Shopping Centre
538 0010 • beachlands@fvs.co.nz
www.franklinvets.co.nz

OPEN HOURS
Mon-Friday 8am-6pm
Saturday 9am-3pm



MEAT SUPPLIER

Meatworx



• For all your homekill and hunting processing.
• Vacuum packing standard & delivery available.
• Qualified butchers, expert advice, friendly service.
• Sausages (gluten free available), bacon, salami, biersticks, biltong, smoking and curing.

027 632 8979
admin@meatworx.co.nz
www.meatworx.co.nz

SCAFFOLDING

QUALITY | RELIABLE | WHITFORD BASED | LAYHER SCAFFOLD SYSTEM

DTS WRIGHT
SCAFFOLDING



Contact Dylan 021 239 4276 | dtswrightsc scaffolding@gmail.com

MECHANICAL REPAIRS

MARAETAI AUTOMOTIVE

All Makes & Models | All Types of Repairs
Petrol - Diesel - European Vehicles - Loan Cars

- Servicing • WOF • Brakes • Clutches • Wheel Alignments
- Tyres • Transmission Services • Batteries • Welding
- Cambelts • CV Joints • Auto Electrical Repairs

131 Maraetai Drive, Maraetai
Ph: 536 6542



ALL WORK GUARANTEED
HOURS: Mon - Fri: 8am-5pm

STAINLESS FABRICATIONS

DARRYL SMITH STAINLESS FABRICATIONS LTD

- Alloy Boat Repairs
- Alterations & Custom-made Accessories a Specialty, Including Architectural Alloy, Stainless Steel & Steel Fabrications

Ph: 266 8774 or Fax: 267 1104
Email: darrylsmithstain@actrix.co.nz

POHUTUKAWA COAST VETS

LOCALLY OWNED & OPERATED IN BEACHLANDS

Book an appointment
Ph: 09 320 1472

reception@pcvets.co.nz
43 Wakelin Rd, Beachlands
www.pcvets.co.nz



BUSINESS LISTINGS

ACCOUNTING SERVICES

Probiz Systems Ltd, Sharon Bramley	530 8036
Ian McLennan, CA www.iwm.co.nz	536 6715
Diane Myers CA, diane@myersca.co.nz	292 9470
Louw & Co, info@louwandco.co.nz	533 8420
Hills & Associates Ltd CA, Randall Hills	530 9207
Business Allsorts, MYOB & Xero Experts	536 5850
Peat Johnson Murray	869 2091
Giles & Liew, gilesandliew.co.nz	262 1955

AERIALS, TV & HOME THEATRE

Auckland Wide Electrical	536 6800, 021 998 665
--------------------------	-----------------------

AGGREGATES

Beachlands Mitre 10	536 6567
---------------------	----------

ALUMINUM WINDOWS

www.windowrenovations.co.nz	
Repairs and Replacements	021 297 2320

APPLIANCE SERVICING

Axial appliance servicing Service@axial.co.nz	573 0877
Appliance Wizard Ltd Ph Paul	0275 784 226

ARCHITECTS

Peter Diprose www.diprose.co.nz	530 9065 or 021 125 1498
---------------------------------	--------------------------

ARCHITECTURAL PLAN & DESIGN

Ross J Willoughby	530 9358
RBG Ltd	027 260 8005

AUTO ELECTRICIAN

Mobile Auto & Marine	0800 662 352
----------------------	--------------

BARBERS

Joe's Barbershop	536 7265
------------------	----------

BEAUTY

Xtreme Beauty & Barbers	600 2325 or 021 992 686
www.xtremebeauty.co.nz	
Serenity Day Spa, serenitydayspald@yahoo.com	02102216026

BED & BREAKFAST

Brookwood Lodge, Beachlands.	536 6975 or 0274 796 453
------------------------------	--------------------------

BLIND SERVICES

Blindworks - For all New Blinds - Plus Blind Cleaning and Repairs www.blindworks.co.nz	0800 999 229
---	--------------

Onsite blind cleaning & repairs - plus new blinds info@onsiteblinds.co.nz	0508 253 262
--	--------------

BOOKKEEPERS

Business Allsorts, MYOB & Xero Experts	536 5850
--	----------

BUILDERS

Bryant Builders Ltd	027 493 5507 or 027 692 8777
Horning Instincts Ltd, ph Gareth Price	021 618 181 or 536 6422
Michael Nootebos	536 6628 or 0274 799 776
Stehr Brothers Construction	021 939 008

BUILDERS' SUPPLIES

Morton Timber Co. Clevedon	292 8656
Beachlands Mitre 10	536 6567

CARPET CLEANING

Aladdin Carpets, Phone Michelle	09 537 4320
---------------------------------	-------------

CELEBRANT

Ceremonies by Diana, www.celebrantdiana.co.nz	021 152 9925
---	--------------

COMPUTER REPAIR

Wi-Fi & Internet, Home and Office IT Support Call Graeme Thomas	027 429 0677
--	--------------

CONCRETE SERVICES

Aaron Ross Concreting	0210 233 2673
We Lay Concrete Ltd.	021 038 1086

COSTUME HIRE

Clevedon Costumes and Vintage Apparel	022 018 2711
---------------------------------------	--------------

DENTISTS

Whitford Dental Group	530 8461
- Dr Rick Parfitt, Dr Alex Lindsay & Dr Susan Clow	
- Hygienist - Shelley Chadwick & Zahraa Talib	530 8461
Anthony Hunt Dental Ltd, Dr Anthony Hunt, Clevedon	292 9071
Marina Dentists Pine Harbour	536 4361
Smile Dental Beachlands	
- Your local dentist. New patients welcome.	022 8888 171
- Free examination since 1996	09 302 0808
www.smiledental.co.nz	0800 4 smile

DIGGER & TRUCK HIRE

The Little Digger	027 278 0335 or 536 4424
Digger Landscapes www.diggerlandscapes.nz	021 415 832

DOCTORS

Beachlands Medical Centre	536 6006
---------------------------	----------

DRAINLAYERS

Vibe Earthmovers and Drainage	call Vincent 0272 225 377
Probuilt Earthworks Drainage	call Gary 021 617 611
Drainage Vision Ltd	call Mike Adams 027 593 0326
Certified drainlayer, CCTV inspections, drain unblocking	

EARLY CHILDHOOD EDUCATION

Whitford Early Learning Centre	530 8726
Clevedon Kidz Early Childhood Centre	292 8358

EARTH MOVING CONTRACTORS

Henri & Lynda Habraken	0274 961 472, 536 6806
www.brookbycontracting.co.nz Earthworks/Carriage/Drilling	027 530 9290
Riordan Contracting	09 530 9429 OR 027 430 9429
Stehr Brothers Civil Construction	021 939 008

ELECTRICIANS

Auckland Electrical & Pump Services	536 4074, 027 4741 579
Auckland Wide Electrical	536 6800, 021 998 665
Pohutukawa Electrical	536 4076, mob 021 769 964
Positive Electrical Services	021 801 606
Go Electrical, Grant O'Halloran (Beachlands)	021 987 228

ENGINEERS - CIVIL/ENVIRONMENTAL/STRUCTURAL

Fraser Thomas Ltd	278 7078
-------------------	----------

FENCING CONTRACTORS

Craig McLeod	027 292 5844
White Fencing:	292 8064, 0274 957 868
- rural fencing, retaining walls	www.whitefencing.co.nz

FLOORING

Nicks Floor Sanding	536 6916, Mobile 021 875 456
---------------------	------------------------------

FLORISTS

Clevedon Flowers, www.clevedonflowers.co.nz	292 9540
Harbour Rose Florist - Wedding and Events	021 0243 5299

FUNERAL DIRECTORS

Resthaven Funeral Services	
Rachel Benns & Raewyn Proctor	533 7493, 267 2530
Ensom Funeral Services	
John Ensom & Jo Nevin	299 6646 or 524 6765
Fountains Funeral Directors & Monumentalists -	
Papakura, Franklin and Manurewa	298 2957
Howick Funeral Home Robert Johnstone - Mark Rowley	534 7300
Souly Funerals Beachlands	0800 47 68 59

GARAGE DOORS

Repairs & Service, Metro Garage Doors	263 6608
---------------------------------------	----------

GARDEN CENTRE

Beachlands Mitre 10	536 6567
---------------------	----------

GARDENING

Rosie's Gardening Service	021 0233 5998
---------------------------	---------------

GEOTECHNICAL SERVICES

Fraser Thomas Ltd	278 7078
-------------------	----------

GIBSTOPPING

Gib stopping & painting - Tony	0274 966 394 or 536 6477
--------------------------------	--------------------------

GLASS AND GLAZING

Manurewa Glass	266 7794
Howick Glass	535 4180

GUTTER CLEANING

Skyhigh Roof and Gutter Cleaning Ltd	
Website: www.skyhigh.nz	021 951 719

HAIRDRESSING

Hair Do's @ Maraetai, ph Denise	0274 599 901
Cooper Hairdressing, 16 Te Pene Rd, Maraetai	027 329 1781

HANDYMAN SERVICES

Local Handyman:	536 5050 or 021 156 7370
Oakes Build Landscape Maintenance, www.oakes.nz	021 903 020

HEAT PUMPS

Positive Electrical Services	021 801 606
Auckland Wide Electrical	536 6800
AES - Auckland Energy Solutions	
Website: www.aes.nz Phone: 09 575 1191	

HOUSE WASHING

Panoramics	530 8136 or 027 245 3444
BEST Property Services	021 366 615
Just Clean Me, Exterior Cleaning Services	022 089 2383
House washing, gutter cleaning, roof treatments, water blasting.	

JEWELLER

Paul Taylor Manufacturing Jewellers	536 4200
Repairs/Remodelling/Valuations/Insurance Replacements	
Shop C/7, 129 Beachlands Rd, Pohutukawa Coast Shopping Centre	

KITCHENS

Kitchen Craft Ltd, Ph Warren	09 274 4221
for Sizzling Kitchen Design & Cabinetry www.kitchencraft.co.nz	
Inhouse Design & Concepts Ltd www.inhousedesigns.co.nz	
ph Brendan	021 272 1974, 536 4625

KNIFE AND GARDEN TOOL SHARPENING

Chris Baird	021 536 618
-------------	-------------

LANDSCAPING

Eastside Landscapes	021 484 158
Nicky Auld - landscape design, consultations	021 972 534

LAUNDROMAT

Kiwi Laundry Co, www.kiwi-laundry.co.nz	022 463 8416
7 DAYS at GAS Maraetai, 131 Maraetai Drive, Maraetai	536 4218

LAWNMOWING & GARDENING SERVICES

JIMS MOWING Beachlands - Frank	027 415 3657
Greenacres - Stephen Howe	292 4165 or 021 2266 753
Prolawns (Beachlands based) Shane	021 746 887
R&R Garden ServicesRichie: 021 917 332, Roanne: 027 252 8183	
Coastal Gardener (Beachlands based) Darryl	022 360 3065

LAWNMOWER SALES/SERVICE/REPAIRS

B'lnds/M'tai mower/chainsaw repairs	536 5621 or 027 308 7777
-------------------------------------	--------------------------

LEGAL SERVICES

Sutcliffe Matson Law	09 279 8351 or 021 327 030
----------------------	----------------------------

LOCKSMITHS

Local Locksmith - Tony	536 5050 or 021 156 7370
Armstrong Smarter Security	0800 506 111

LPG SUPPLIERS

Matagas	0800 954 427
---------	--------------

MARINE AND BOATING

Ovlov Marine Pine Harbour LTD	536 5249
-------------------------------	----------

MECHANICAL REPAIRS

Clevedon Automotive Ltd	292 8441, 0274 743 918
Maraetai Automotive	536 6542
Pohutukawa Motors, 57 Third View Ave, Beachlands	536 6664
Garaway Autos	022 395 6185
Luke's Garage Ltd	09 218 6442 / 022 301 0412

MIRRORS

Howick Glass	535 4180
--------------	----------

OUTBOARD REPAIRS/MARINE ENGINEERING

Eastern Marine - Mercury Certified Service Centre - Outboards, sterndrive, petrol & diesel.	536 6252
---	----------

PAINTERS & DECORATORS

East Auckland Painting Ltd	027 619 2619
specialistlistings.co.nz We fix, stop, and paint	0800 54 64 64

PEST CONTROL

Coastal Pest Solutions (including rats, rabbits, possums, wild cats, pest birds, wasps & bees)	536 6020 or 0273 932 125
Professional Pest Control	536 6690 or 021 078 3622

PET ACCOMMODATION

Fairfield Pet Lodge, Clevedon	027 222 0307
Pets at Whitford Spa and Stay (PAWSS)	530 8860

PHARMACIES

Unichem Beachlands Pharmacy	536 6500, fx 536 6590
Pohutukawa Coast Pharmacy	536 6747, fax 536 6742

PHYSIOTHERAPIST

Beachlands Physio beachlandspysio.co.nz	09 222 4120
---	-------------

PLASTERING SERVICES

Solid Plastering, Bruce Parsons	021 981 812
---------------------------------	-------------

PLUMBERS

Dynamo Plumbing	0800 175 988
BF Brown Plumbing & Drainlaying	0800 477 455

PLUMBERS & GASFITTERS

Ashby Plumbing & Gas	292 2445 or 0272 553 499
----------------------	--------------------------

PROPERTY MANAGEMENT

Rent People Ltd	0800 426 580
Ray White Lighthouse Licensed Real Estate	536 7011
Barfoot & Thompson Beachlands	536 4990

PUMP SALES & REPAIRS

Auckland Electrical & Pump Services	536 4074, 0274 741 579
Malmaks Water Shop	530 8872, 021 353 158
Allwater Pumps and Supplies Ltd	09 536 5444, 027 536 5444
Clevedon Pumps & Filtration	027 479 7741

QUARRY

Manukau Quarries	263 0220
------------------	----------

QUANTITY SURVEYORS

Hope & Associates - Residential estimating specialist	021 882 312
---	-------------

REAL ESTATE AGENTS

Barfoot & Thompson Beachlands	536 4990
Barfoot & Thompson Whitford	530 8292
RE/MAX Clevedon	292 8388
Ray White Lighthouse Licensed Real Estate	536 7011
Bayleys Real Estate Limited	536 6121

ROOF PAINTING SERVICES

Master Tradesman. Text details for fast service:	027 517 8494
Visit our website: www.5starroofpainting.co.nz	

ROOF SOFTWASHING

Skyhigh Roof and Gutter Cleaning Ltd	
Website: www.skyhigh.nz	



RayWhite

FOR SALE

36 Karo Road, Beachlands

A True Masterpiece - Designed and built by Stonewood Homes, every detail has been carefully considered to ensure your utmost comfort and style.

- Open-plan living, kitchen, and dining area with soaring highpitched ceilings.
- In addition to the masterful design, this home also boasts a second living area, a separate laundry and an office space.
- Large covered deck, perfect for entertaining friends and family.
- Generous off-street parking and a triple garage.

rwbeachlands.co.nz/BCH30718

Lighthouse Real Estate Ltd Licensed (REAA 2008)

4 1 2 2 1 3 880

For Sale
By Negotiation

View
Please call us for viewing times



Paula Kirkman
021 0290 8007
paula.kirkman@raywhite.com



Brianne Bignell
021 400 979
brianne.bignell@raywhite.com

ALAN WHITE
ELITE
PERFORMER 22-23

WHY WAIT?



RayWhite

AUCTION

57 Angiangi Crescent, Beachlands

Instantly Appealing - Sitting on an elevated corner site this 2019 built Fletchers home is an absolute must-see. Offering an easy-care lifestyle, street appeal and good looks throughout.

Families and up-sizers will appreciate the home's proportions spread across approximately 242m² on a single level. The home has a fantastic indoor-outdoor floor plan, orientated to capture all day sun. Perfect for growing families who will appreciate the low maintenance and modern aspects on offer.

rwbeachlands.co.nz/BCH30741

Lighthouse Real Estate Ltd Licensed (REAA 2008)

4 1 2 2 1 2 823

Auction
The Shed @ Ray White Beachlands
6:00 pm Monday 30 October 2023
(Unless Sold Prior)

View
Saturday & Sunday
11:00 - 11:30 am



Dillon Smith
021 027 81067
dillon.smith@raywhite.com

WHY WAIT?



FOR SALE

30 Columbia Crescent, Beachlands

This exquisite two-level Spinnaker Bay residence is a true gem that embodies coastal living at its finest:

- An abundance of space and luxury.
- Seamless fusion of open-plan design that effortlessly connects the living, kitchen & dining.
- Covered decking area, where you can bask in the surrounding views.
- Versatile upstairs living space for growing families.
- Triple car garage is a true standout feature.

rwbeachlands.co.nz/BCH30545

Lighthouse Real Estate Ltd Licensed (REAA 2008)

5 🚗 1 🍷 3 🛁 2 🛏 1 🍷 3 🏠 889 sqm

For Sale
By Negotiation

View
Please call us for viewing times



Paula Kirkman
021 0290 8007
paula.kirkman@raywhite.com



Conor Duffy
021 022 83366
conor.duffy@raywhite.com

WHY WAIT?



FOR SALE

2/5 Paketai Lane, Beachlands

Seize Your Coastal Dream - If you're seeking a peaceful coastal lifestyle with convenient access to Auckland's CBD, look no further:

- Designed for easy living & low maintenance
- Well-thought-out floor plan - maximising space & natural light
- Open-plan living, kitchen with a sunny balcony
- Prime location of Pine Harbour Marina

A peaceful retreat surrounded by nature's beauty and the convenience of urban amenities.

rwbeachlands.co.nz/BCH30611

Lighthouse Real Estate Ltd Licensed (REAA 2008)

2 🚗 1 🍷 1 🛁 1 🛏 1 🏠

For Sale
By Negotiation

View
Please call us for viewing times



Brianne Bignell
021 400 979
brianne.bignell@raywhite.com



Paula Kirkman
021 0290 8007
paula.kirkman@raywhite.com

WHY WAIT?