

1 November 2024

Pier pressure: Marina's electrical outage sparks berth holder backlash



Berth holders at Pine Harbour Marina (above) are upset they are being charged for a \$900k electrical cable repair.

An electrical cable failure which has led to power being switched off at Pine Harbour Marina has sparked disagreement between the marina operator and berth holders.

An electrical inspection revealed the main cabling which supplies power to each of the marina's piers had experienced significant deterioration, posing a safety risk to berth users. Power to the marina piers was immediately turned off, allegedly causing thousands of dollars of damage to batteries, inverters and systems in a number of boats across the marina which rely on the power supply.

Now Pine Harbour Marina Management Ltd (PHMML), which is owned by Simon Herbert's company Empire Infrastructure Trustee Limited, plans to split the almost \$900,000 cost of replacing the perished cable through a charge amongst the approx. 550 berth holders. The amount charged to each berth holder varies, depending on the size of berth they occupy.

The Pine Harbour Berth Holders Association (PHBHA), which represents the interests of its members who own or lease berths at the marina, argues that the way the cost is being recovered is unfair and contrary to the intent of berth licenses.

The PHBHA believes the work should be covered by the marina's major refurbishment fund - a fund set up when the marina first became operational, with the understanding that it would fund any major refurbishment expenses. All berth holders contribute to the fund through annual charges under the terms of their berth licenses.

PHMML argues that the cable replacement is an operational maintenance issue, which should be paid from annual operating expenses.

Berth holder Grant Bowring says: "They're now trying to say, actually this is an operational maintenance item so we're going to charge it to you as OPEX [operational expense], rather than having to pay for it out of a major refurbishment fund. There's a lot of smoke and mirrors. My contention is that the tax department will view this as a capital expense, rather than repairs and maintenance."

Berth holders received an email from PHMML on 3 October, notifying them that money would be taken from their bank accounts on 1 November to pay for the repairs.

Following communication from berth holders, Pine

CONTINUED ON PAGE 4

LICENSED TO SELL

Ian 027 285 9314
 Jenny 0204 000 2564
 Nicolette 027 702 9157
 Clare 021 206 6822

SPECIAL AGENTS
003

#1 Top Salesperson
 Beachlands Branch 2024

BARFOOT & THOMPSON

We're here for **you**
 and all your property
 management needs!

BARFOOT & THOMPSON | **Beachlands**
 PROPERTY MANAGEMENT | 09 536 4990

RayWhite.
 BEACHLANDS

Your Premium **Choice**
 in Property Management

Ray White Beachlands P : (09) 536 7011
 Lighthouse Real Estate Limited E : beachlands.nz@raywhite.com
 Licensed (REAA 2008) W : rwbeachlands.co.nz
 A : 81 Second View Avenue, Beachlands

MORTON TIMBER

Visit us
 226 North Road,
 Clevedon 2248
Ph: 09 292 8656

Email: office@mortontimber.co.nz
 Web: www.mortontimber.co.nz
 Facebook: mortontimber.clevedon

PICK "N" MIX

GUM SLEEPERS 200X100X2.4M
(LOCALLY SOURCED) \$140 plus gst each

Plywood 9mm u/t non structural
2400x1200 \$32 plus gst per sheet

Form Ply 18mm (garage lining)
2400X1200 \$75 plus gst per sheet

Pailings
150x19mm x 1.8m \$3.95 plus gst each

Premium Decking Smooth in 5.4m
90x20 \$3.50 plus gst per lineal metre

No2 1.8 quarters (75-99) diameter
100 in a bundle \$4.90 each post plus gst
 (to be sold as the bundle)

OPENING HOURS
 MONDAY - THURSDAY 7:30AM TO 5:00PM
 FRIDAY 7:30AM TO 4:30PM & SATURDAY 7:30AM TO NOON

INSIDE: Beachlands Santa Parade cancelled p3

AT seeks feedback on Hill Road upgrade p3

RayWhite.

Second Generation Real Estate
EXPERIENCE the difference...

Ray White Beachlands P : (09) 536 7011 or (021) 400 979
 Lighthouse Real Estate Limited E : beachlands.nz@raywhite.com
 Licensed (REAA 2008) W : rwbeachlands.co.nz
 A : 81 Second View Avenue, Beachlands

EmbroidMe.

East Tamaki
 We Supply & Brand
Uniforms & Promotional Products

Embroidery, Printing, Lettering, Dye Sublimation and more...
 Cnr Smales and Springs Rds, East Tamaki - 09 265 0300

STIHL SHOP BOTANY

FREE Accessories
 With selected tools

16(H) Bishop Dunn Place, Botany. 2163
 Phone 271 3000 www.stihlshopbotany.co.nz

OPEN 7 DAYS

Deadlines: Display advertising - 5pm Thursday. Classified and News - midday Friday

advertising@pctimes.co.nz | www.pctimes.co.nz

Pohutukawa Coast Times

GET IN TOUCH

E: info@pctimes.co.nz
W: www.pctimes.co.nz
F: facebook.com/pctimes
A: PO Box 5, Beachlands 2147

EDITOR

Leanne Chamberlin
 021 426 207
 leanne@pctimes.co.nz

ADVERTISING

Melody Cutfield
 021 0261 4467
 advertising@pctimes.co.nz

CLASSIFIEDS

advertising@pctimes.co.nz

DELIVERY/DISTRIBUTION

distribution@pctimes.co.nz

ACCOUNTS

Pam Rutherford
 accounts@pctimes.co.nz

The Pohutukawa Coast Times is distributed weekly to 6500 homes and businesses in: Whitford, Brookby, Beachlands, Maraetai, Clevedon, Ardmore, Alfriston, Kawakawa Bay, Orere Pt, Hunua, Paparimu

Member of the New Zealand Community Newspapers Association



Guest editorial by Kawakawa Bay Community Association

“Kawakawa Bay – a safe and inclusive coastal community”

Spring is in full swing, and we are now all looking forward to those long summer days.

The past year, like all others, seems to have flown by. The KBCA have had a productive year working with our members and ticking off several projects from our plan. I would like to thank our team for all their hard work and dedication.

This year was also a very special year for the Kawakawa Bay Volunteer Fire Brigade. They have turned 50! That’s right, 50 years of dedicated service by the many volunteers. The community is proud of all of you and what you contribute to the community. Thank you to the current volunteers and all those that have been there in the past.

Update on our community:

The Kawakawa Bay Community Association is a group of volunteers who work together with the council and other organisations to implement the ideas and developments that the community has brought forward and asked to be considered.

The Community Association annual joining fee of \$15 allows our members to have a say and support the volunteer committee to make Kawakawa Bay the best place it can be. The Community Association committee welcomes you at the monthly meetings. Our current strategic plan is an important part of

our community’s vision. We encourage our members to participate in community activities and bring forward their ideas of what they would like included in the plan.

Kawakawa Bay has other organisations that are run by volunteers. The Fire Brigade, as mentioned, the Health Clinic, St Johns First Response Team and others.

The Health Clinic is an integral part of our community, we are fortunate to have our own local medical centre, let us all support it.

Volunteers also run the Gardening Club, and they have now embarked on another project that will be an asset to the community. A Community Garden has been approved and they need volunteers to help in many different ways.

The Worn Again shop has a dedicated band of volunteers who work tirelessly to keep it running and all the proceeds are donated back into the community.

The above are a few of the organisations that always need your help and would really appreciate your time and support. Whether it is baking for the Health Clinic to sell on market days or working in the Worn Again shop one morning a month or volunteering your time to help the Gardening Club. Thank you to all the volunteers.

The Kawakawa Bay Community Association would also like to thank our Franklin Local Board representatives for their support and hard work during the past year.

Roading

Our community is very concerned about the state of some of our roads, especially safety and the large number of potholes. The KBCA continues to raise these issues with council, and they will continue to support us. It is important that as a community we need to report roading issues, potholes, slippery surfaces and any other road hazards. The more reporting that is recorded the better.

Roading issues: www.at.govt.nz/about-us/contact-us/ or call (09) 301 0101.

Ensure you receive a logit reference.

Also, if you witness any dangerous driving or any near misses, please report these to *555 in the first instance.

Keen to become a member of KBCA?

We encourage you to become a member so that you can vote at upcoming community consultations. In addition you also receive a copy of Whispers (the local community news publication). If you’re not a member and would like to be, please email us at: kcbwhispers@gmail.com

KBCA Meetings

We hold our committee meetings on the first Monday of the month at the Kawakawa Bay Hall, 7pm. We welcome you to join us.

All the best for the year ahead.

Kawakawa Bay Community Association Chair Derek Nielsen

WIN TICKETS TO HOWICK LITTLE THEATRE

The PC Times has two double passes to give away to Howick Little Theatre’s latest production - *Worst Wedding Ever*. To enter the draw, email your name and phone number to info@pctimes.co.nz, with ‘Theatre Tickets’ in the subject bar. Entries close 5pm Friday 8 November 2024.

WORST WEDDING EVER - a comedy by Chris Chibnall, directed by Ashton Brown
 Rachel and Scott are getting married. They are also buying a house together – never the easiest of things to do at the same time. When house prices go up, their plans for a dream wedding have to be downsized accordingly. However, Rachel’s mother has other ideas. What if their family could join forces to make it a wedding to be proud of?

Worst Wedding Ever is on stage from 9 to 30 November at Howick Little Theatre

The PC Times 20 years ago:
 29 October 2004: Te Puru complex on schedule for February opening.

Weekly Tide Chart

1 Fri	1:52am ▼ 0.8m	8:17am ▲ 3.0m	🐟🐟🐟
2 Sat	2:29am ▼ 0.7m	8:55am ▲ 3.0m	🐟🐟🐟
3 Sun	3:06am ▼ 0.7m	9:32am ▲ 3.1m	🐟🐟🐟
4 Mon	3:42am ▼ 0.6m	10:09am ▲ 3.1m	🐟🐟
5 Tue	4:19am ▼ 0.6m	10:46am ▲ 3.1m	🐟
6 Wed	4:58am ▼ 0.7m	11:27am ▲ 3.0m	🐟
7 Thu	5:39am ▼ 0.7m	12:10am ▲ 3.0m	🐟

MARINE FORECAST – VHF CHANNEL 19
 AUCKLAND FORECAST – 0900 999+ YOUR STD

Pine Harbour Electrical
 Unit 1A Pine Harbour Marina
 P: 536-6177
 W: www.phe.co.nz

LAWYERS SERVING THE POHUTUKAWA COAST

38A Wakelin Road, Beachlands
 Available Monday - Friday, by appointment

Conveyancing, Refinancing, Wills,
 Powers of Attorney, Business Transactions
 Family & Commercial Law
 and other general legal needs.

We are happy to meet after hours
 at your home for your convenience.

Ph: 09 279 8351 or Braden: 021 327 030
braden@smlaw.net.nz | breanna@smlaw.net.nz
www.sutcliffematsonlaw.net.nz

BREANNA FULLER AND **BRADEN MATSON**
BCOMLLB (HONS) | ASSOCIATE MA/LLB | DIRECTOR

Read online
www.pctimes.co.nz

PRIMA COLLISION REPAIRS

Complete panelbeating and car painting

East Tamaki: Unit B 154 Harris Rd, East Tamaki, Auckland 09 274 4778
 Manukau: 2/117 Kerrs Rd, Manukau, Auckland 09 268 9340

Santa Claus ~~is~~ isn't coming to town

There will be no Santa Parade in Beachlands this year.

The Takutai Charitable Trust, which organises the annual parade, says it has cancelled the event "with a heavy heart" due to a lack of volunteers.

"The Santa Parade has always been a highlight of our community calendar, bringing joy and wonder to children and adults alike," said the Trust in a Facebook post. "It's absence will leave a noticeable hole in our holiday celebrations."

The Trust is encouraging locals to focus their time and efforts on being kinder to their neighbours, and spreading extra cheer over the holidays.

Anyone with ideas for alternative Christmas celebrations, or to help reinstate the parade next year, can contact info@takutaicharitabletrust.co.nz.

All is not lost this year though - Santa will be at the Clevedon Christmas Parade on **Saturday 7 December at 2.30pm.**



Image generated by ChatGPT.

AT seeks feedback on plans to upgrade Hill Rd motorway access

Commuters who use Hill Road, Manurewa, to access the northbound SH1 motorway will be happy to hear Auckland Transport plans to address traffic congestion in the area.

Auckland Transport is asking people to give feedback about their proposed plans to address current safety and operational issues at the intersection of Grande Vue Road with Hill Road.

AT's proposed plans include:

- Installing traffic lights at the intersection of Grand Vue Road and Hill Road to help manage traffic and give priority to people on foot to cross the road when needed. The new traffic lights will be coordinated with the nearby on-and-off ramps' signals and monitored alongside the ramp signals to maximise efficiency.
- Creating two traffic lanes on Grande Vue Road to the SH1 on-ramp for ease of access to the SH1 motorway

on-ramp.

- Rebuilding footpaths and installing yellow tactile pavers at the crossing points to help people find their way to crossings and cross safely.
- Installing new traffic islands and kerb ramps at the intersection of Grande Vue Road with SH1 on-ramp.
- Treating the intersection of Grande Vue Road with the SH1 onramp with a skid-resistant road surface.
- Installing new signage and painting new road markings to support the proposed changes.

AT says some parking will need to be removed on Hill Road to accommodate the intersection changes, but that the changes above will bring a number of benefits including safety, better access to the Auckland Botanic Gardens and local shops, smoother traffic flow and reduced congestion.

The changes will remove the current confusing give-way situation, where drivers turning left from Hill Road onto Grand Vue Road must give way to drivers turning right.

For further information, or to have your say on the proposal, see <https://haveyoursay.at.govt.nz/grnvu-hillrds-intsctn-impvmnt>

Maraetai water incident claims life

A woman in her 40s died following a water related incident off Maraetai Beach on Monday 28 October. Emergency services were called to the scene around 3.30pm. Attempts to resuscitate the woman were unsuccessful and she died at the scene.

SPCA investigates Whitford property

The SPCA has confirmed it is carrying out an investigation at a Trig Road, Whitford property, following allegations of animal neglect. SPCA spokesperson Bridget Burke said the SPCA has no further comment about the case at this time.

CLEVEDON PUMPS & FILTRATION

Servicing Clevedon & surrounding areas for over 10 years

- New Installations and Maintenance of all Pump & Water Filter Brands
- Specialist Bore Pump Repairers & Installations

Contact: Geoff Peck 0274 797 741 | geoff.peck@clevedonpumps.co.nz



Robert Johnstone & Kevin Kelleher

A privilege to care for your family



Every life is special, we understand that. Let us pay tribute to the life of your loved one and celebrate the unique way they have touched you, your family and those around you.

For a personal, professional service contact us today to discuss your options:
35 Wellington St, Howick | Phone 534 7300 | www.howickfuneralhome.nz

BAYLEYS GETS YOU 45% MORE VALUE ON YOUR MARKETING SPEND

PLUS A CHANCE TO WIN AN AUDI Q5

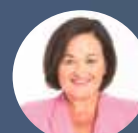
SCAN HERE FOR MORE INFO



Contact one of our local agents now for more information



Natalie Harvey
021 308 897



Melissa Wright
021 181 1840



Chris Robinson
027 499 2057



Alan Tucker
021 991 639



Sue Tucker
021 033 1882



LICENSED UNDER THE REA ACT 2008. AVAILABLE FOR A LIMITED TIME ONLY. READ THE FULL T&CS ON OUR WEBSITE.

Marina's electrical outage sparks berth holder backlash

CONTINUED FROM PAGE 1

Harbour management emailed berth holders again on 16 October, saying that if it had to pay for the cable repair out of its major refurbishment fund, repairs would not be possible until March 2026. In the meantime, the cost of supplying temporary power to 5 of the 8 piers would cost an additional \$230,000 to the final total. In the same email, PHMML offered berth holders the chance to split the cost over two payments on 1 November and 1 December 2024.

Berth holder Ruth Doone says that a large number of berth holders dispute the payment and have notified PHMML that if the money is removed from their bank accounts, they will lodge individual claims with the Disputes Tribunal.

With no identified pathway for disputes resolution outlined in their berth contracts, the berth holders feel as though their options are limited, says Ruth.

"It all just leaves such a dirty taste in your mouth," says Ruth. "You buy in legitimately and in good faith and then we're continually bullied by this business juggernaut that expects berth holders to just pay and not be able to fight, because of the large fighting fund required. There's a lot of feedback and anger from PHBHA members that this is being done to us."

In a statement issued to the PC Times,

marina management said that the safety and well-being of berth holders, users and visitors is their top priority.

"Following routine inspections as part of our Certificate of Verification (COV) renewal process earlier this year, independent electrical experts identified issues with some of the electrical mains power supply cables, which were found to pose a potential health and safety risk."

PHMML says it took immediate action to replace these cables across the marina, and have incorporated the cable replacement into its ongoing pier refurbishment programme.

"While the decision to temporarily shut off power to the piers was not taken lightly, it was necessary to ensure the safety of everyone in our marina community. This reflects our unwavering commitment to maintaining the highest safety standards."

PHMML says it has completed re-cabling and refurbishment of F-Pier, G-Pier and H-Pier, and aims to complete the remaining work by April 2025.

"Throughout this process, we've done everything we can to manage costs responsibly in accordance with the marina berth licences, ensuring minimal impact on our berth holders."

PHMML says that by addressing the cabling issues now, it is safeguarding the marina's infrastructure for the long term.

"We appreciate the patience and

understanding of all our berth holders and users as we work to enhance the marina, and we remain committed to delivering the highest standards of safety and service."

The latest issue with the pier power supply is one of a number that the PHBHA says it has been trying to address with the current owners and management.

"The original license agreements were put in place at a time when there was trust between the two parties. Unfortunately, under the current ownership structure, the

Pine Harbour Berth Holders Association believe the license agreements allow for exploitation," says Ruth.

PHBHA asks that berth holders who would like to know more but are not currently members of PHBHA, join up or get in touch.

"This really does involve everybody who has a stake in the marina. The invitation extends to members of the wider Pōhutukawa Coast community as well," says Ruth. Email PHBHA on info@phbha.nz or visit www.phbha.nz.

Vector reassures residents about undergrounding power

An article in the PC Times on 11 October shared the news that Vector plans to remove overhead power cables in some areas of old Beachlands, replacing them with underground cabling.


Since then, Vector has been contacted by a number of residents enquiring about how the underground cabling project might affect their properties.

Vector Underground Programme Manager Ross Malcolm says a Facebook group has been created for the project (search on Facebook for Vector Beachlands Undergrounding Group).

"We have about 200 residents in the area signed up to the group already. We're using that medium to broadcast messages and updates," says Ross.

Ross says that there will be no costs to residents, and that the project team will visit each home in the area to discuss the details for the new underground cable installations on their property.

"We are not expecting to have to trench across any of the properties. Accordingly we are expecting minimal interference with drives, paths and gardens etc," says Ross.



**MALMAKS
WATER
SHOP**

CLEAN WATER

WE ARE NOW AN AUTHORISED DEALERSHIP FOR

DAB & GRUNDFOS

REPAIRS & MAINTENANCE
ON ALL PUMP BRANDS

STOCK AND SELL

- Pumps • UV Lamps
- All in one pump box
- Carbon & Sediment Filters
- Salt • Bore Softeners

PH: 530 8872

• DAB • GRUNDFOS • GREENWAY • VIQUA

Whitford Village
www.malmakswater.com.co.nz

• ATLAS FILTRI • ALPINE PURE • STERILIGHT

• PURETEC • DAVEY • HANSEN

SERVICING PŌHUTUKAWA COAST FOR OVER 10 YEARS

YOUR BETTER HEARING STARTS HERE

WHY CHOOSE FOCUS HEARING

Your local and independent hearing care clinic

-  **Experienced & qualified hearing care experts**
Providing unbiased information and recommendations.
-  **TESTS available**
Full hearing assessment (Adult & Child)
Auditory Processing Disorder (APD)
Free hearing screening
Tinnitus & Hyperacusis
Middle ear check
Pre employment hearing check - /caa
Hearing aid check & clean

 **Hearing aid FUNDING OPTIONS available**
ACC, Government subsidy, WINZ & VANZ
Payment options available
Southern Cross Easy-claim

 **Hearing Aids**
Free Hearing aid consultation and recommendations.
Up to 4-6 Weeks of NO OBLIGATION FREE TRIAL

 **PHONE (09) 533 6463 TODAY TO BOOK YOUR APPOINTMENT**



12 Picton Street, Howick
www.focushearing.co.nz



FOCUS HEARING
WE FOCUS ON YOUR HEARING

SEPTIC TANK & GREASE TRAP CLEANING

Skybridge NZ Ltd T/A SST Services

Ph: 09 294 7611

Or call

Robbie: 0274 967 430

John: 0274 923 669

Septic tank pumping and reporting that complies with new Auckland Council regulations

E: sstseptic tanks@gmail.com

21E Ryan Place Manukau



Honouring and Celebrating Life

Our approach, philosophy and high standards are ideals we are proud to uphold. Our compassion, values and dedication when caring for the bereaved are just a few of the qualities that form the heart of Resthaven Funerals.



HOWICK. Cnr Picton & Walter MacDonald Sts | **Ph. 533 7493**

MANUREWA. 88 Great South Rd | **Ph. 267 2530**

www.resthavenfunerals.co.nz



Coastal Fun Run raises \$9k

Four hundred and fifty two competitors challenged themselves on a brand new course at the sixth Rotary ALLFIT Coastal Fun Run which was again blessed with good weather on 20 October. Entry numbers were almost exactly the same as last year, with additional children taking part in the new 'Kid's Dash' event around Te Puru Park.



The new course saw 5km and 10km event participants take in the sights of Omana Regional Park and Te Puru Park.



Results:

10km

1st Male: Matt Treanor
 1st Female: Marcia Jerram (on her birthday!)
 1st Child: Leo Wynyard

5km

1st Male: Max Hooper
 1st Female: Kim Habraken
 1st Child: Kayno Kaitao

Adult Team 1st: Ben Hew

Event director Alex Garden, from Pōhutukawa Coast Rotary Club, says: "Thanks so much to all those in the Pōhutukawa Coast who supported this community event, either as a participant, sponsor, volunteer or supporter."

Competitors enjoy Tracey's Walk.
 Photos / Ted Erkkila.

event a successful one," says Alex.

Rotary will raise around \$9,000 from the event thanks to sponsors and event entries.

Funds raised will be pooled with money raised by next year's Trolley Derby on 23 February, and will be allocated to the community via an application process.

"We'd like to thank ALLFIT 24/7 Fitness Gym who have supported the event for six years now. Also, a big shout out to all our other sponsors who helped to make the

See www.rotarycoastalrun.nz for full results and other details.

GH Building

YOUR LOCAL BUILDER

**Mention this advert
 for a FREE quote**

Logan Felts 021 564 263

**Servicing the Pohutukawa Coast area for decades –
 making many people's dream home a reality!**

When you choose GH Building you are choosing an expert building job from start to finish.

With NZ trained & certified licenced builders, you can be sure of high quality workmanship who are passionate and will deliver within your budget & time-line. Our team are highly experienced in all types of residential building work, from new home builds, bathroom & kitchen renovations to large interior renovations/extensions!



Logan Felts: 021 564 263

logan@ghbuilding.kiwi.nz

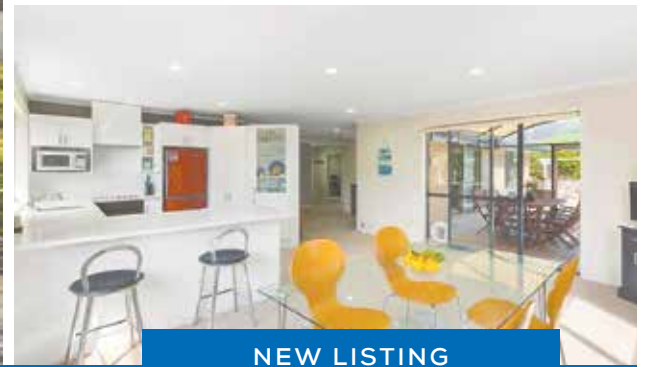
ghbuilding.kiwi.nz



Beachlands
 09 536 4990

BARFOOT & THOMPSON
LICENSED REAA 2008

Barfoot & Thompson Limited
 Licensed REAA 2008



NEW LISTING

MARAETAI

1 SWORDFISH PLACE



TENDER

4:00am 6 Nov 2024 (unless sold prior)

VIEWING

Phone For Viewing Times
 Sat & Sun 3:00 - 3:30pm

barfoot.co.nz/893936



Mike Deverell
 021 466 300
 m.deverell@barfoot.co.nz



Nadine Bryant
 021 265 7512
 n.bryant@barfoot.co.nz

Hook, Line, and Sinker

Welcome aboard to your dream home in Maraetai! Cast your gaze upon 1 Swordfish Place, where the waters of coastal living flow effortlessly. Reel in the excitement as you explore this single-level brick and tile residence. Inside, the open-plan layout hooks you from the start, seamlessly connecting the living, kitchen, and dining areas like a well-crafted angler's knot. Step onto the sun-drenched North facing covered decking – your personal fishing pier.

East High come to East Auckland in Disney's High School Musical

In 2006, High School Musical took the world by storm and inspired a generation, making it a staple of late 2000s culture. Eighteen years later, the kids who grew up on hits like Bop to the Top and We're All In This Together, are bringing it to life on stage at Harlequin Musical Theatre.

The cast includes Pōhutukawa Coast residents Kirsty Mayhill and Barry Nock, while backstage Blake Ingram takes on the role of lighting design, and Connor Vazey will play guitar as part of the show's live band.

Harlequin Musical Theatre president

and Beachlands resident Dale Smith says the show is full of nostalgia for Disney Channel classics, endless talent across a range of performers, and basketballs.

With fresh takes on the beloved lineup of songs, High School Musical will feature at Harlequin Musical Theatre from 16 to 30 November, with evening shows starting at 7.30pm and weekend matinees starting at 2.00pm.

Tickets available from <https://www.iticket.co.nz/venues/auckland/harlequin-theatre>



The cast of High School Musical will be on stage this month at Harlequin Musical Theatre in Howick. Photo / supplied.

NZ's most trusted ventilation 3 YEARS IN A ROW!



hrv.co.nz | michael.chong@hrv.co.nz | 021 400 592



3 2 2 2 192m² 565m²



Floor Plan © G.J. Gardner Homes 2024

SUNSETS AND STYLE IN CONMARA

Lot 52/144 Papakura-Clevedon Road
Conmara Estate, Clevedon
from \$1,499,000*

Nestled within the vibrant and growing rural community of Clevedon. Conmara offers the perfect blend of country living and modern convenience.

This modern, open plan three bedroom home is well positioned for the sun on a 565m² site with outlook over the native planted reserve.

*Price indication only and includes land. Some conditions may apply. Subject to availability. Price current as at 21/10/2024. Images are artist's impression only.



09 274 2082 / gjgardner.co.nz

G.J. Gardner. **HOMES**

Maraetai Bowling Club hosts retirement village competition




Residents of eight Metlifecare retirement villages rolled up to Maraetai Bowling Club on Wednesday 16 October to take part in the second annual Metlifecare Pōhutukawa Landing inter-village bowls challenge.

Fifty competitors from as far afield as the Hibiscus Coast and Hillsborough took part in the competition.

First place honours went to the team from Metlifecare Gulf Rise who pocketed \$150.

Pōhutukawa Landing, Metlifecare's Beachlands retirement village, has about 20 residents who regularly bowl at the Maraetai club.



Pohutukawa Coast
PRESBYTERIAN CHURCH
"A Voice of Positive Christianity"

"You have a right to be you.
It is a privilege for others
to be around you."
- Janna Cacbola -

Every Sunday 9am
Plus Kids' Programme
Minister: Mark Chapman
For more information contact Lyn:
lyn.41buchanan@gmail.com

Playgroup Tues & Wed 9am - 12pm
Food bank 027 304 4998 Phone or text
5 Jacobs Way, Maraetai



OUR LADY STAR OF THE SEA
CATHOLIC PARISH

We celebrate Mass at 4.30pm
on the first Saturday of the month.
On other Saturdays there will be
Celebration of the Word with
Holy Communion.

St Hilda's Church,
3 Wakelin Road, Beachlands
Visit our website for details
www.beachlandsc.com

MANUREWA PODIATRY
MARK CHAMBERLIN BHSc (pod) MNZS POD

see us for any problems with
your feet

- Corns
- Calluses
- Ingrown Toenails
- Heel, Arch Pain
- Verruca
- Surgery/Orthotics

PH 266 8800

From children to the elderly, sports people
to workers and those with a specific medical
problem, where foot care is critical...
**We diagnose and treat conditions of the
feet and lower limbs...**

LATE NIGHT THURSDAY
Inside Unichem Pharmacy
200 Gt South Rd, Manurewa



GALBRAITHS
LAWYERS

FOR PROFESSIONAL AND FRIENDLY ADVICE
ON ALL LEGAL MATTERS

Family Law/Relationships
Employment Law
Buying & Selling Property and Businesses
Litigation Trusts
Wills & Estates

CONTACT THE TEAM AT:
GALBRAITHS LAWYERS
Units 1-3 Fencible Chambers
Corner Fencible Drive & Moore Street,
HOWICK VILLAGE
Ph: 535 4190
www.galbraiths.co.nz



BRIANNE BIGNELL

Awarded
No. 13
Residential Salesperson
Ray White

NATIONAL AWARDS 23 - 24

Top 1% of the Ray White Group

Team Brie

Premium Service | Premium Results

Brianne Bignell 021 400 979 | Conor Duffy 021 022 83366 | Paula Kirkman 021 029 08007
teambrie.beachlands@raywhite.com

CATCH OF THE WEEK PHOTO COMPETITION IS BACK!

Send us your fishing photos this summer and be in to win a \$50 Top Catch voucher from GAS Maraetai each week!
The overall season winner will win a brand new rod and reel sponsored by GAS Maraetai.

TO ENTER, EMAIL YOUR PHOTO TO
LIZ@GASMARAEtai.CO.NZ

include your full name, plus details about your catch (where the fish was caught, boat name, special gear used, what you did with the fish after it was caught etc).

FOOD AND ENTERTAINMENT



Bring in this ad to get a **FREE** Garlic Bread or 1.5L drink with your next pickup order over \$25.
Valid at Domino's Beachlands only and expires 31/12/24



OPENING HOURS
Tuesday - Thursday: 3-10pm
Friday - Sunday: 12pm till late
027 208 6942
190 Jack Lachlan, Pine Harbour

Small sharing plates
Cocktails
Marina view




DINING • WEDDINGS • FUNCTIONS
424 Creightons Rd, Clevedon, Auckland 2582
PH 09 292 8845 • enquiries@vinalto.co.nz
OPEN: Thur and Fri 5pm - late
Saturday 12pm - late, Sunday 12pm -4pm



Pōhutukawa Coast's only not-for-profit Chartered Club since 1948
Open 7 days a week
Mon & Tues 4pm-Late
Weds-Sun 3pm-Late

2 Weekly Membership Draws
Fishing and 8 Ball Section
Fortnightly Quiz Nights
Free Pool & Darts
Kids Room
Gaming Lounge
Free* Function Hire



(09) 536 4151
Monday to Friday 10:00am - 11:00pm
Saturday & Sunday 8:00am - 11:00pm
44 Third View Ave, Beachlands
The best of European Cuisine

JOIN THE CLUB!
Boating or Community memberships available.
Bar open from 4pm Thurs-Sun.
Social events. Function hire.
www.maraetaiboatclub.org.nz




Thurs-Sun from 5pm;
Sat & Sun from 10am for brunch
Dine over the water at MBBC
For bookings 021 249 1660

HALLERTAU CLEVEDON
26 CLEVEDON-KAWAKAWA RD, CLEVEDON, AUCKLAND — CLEVEDON@HALLERTAU.CO.NZ — 09 869 2989
OPEN — MON & TUE: CLOSED — WED & THU: 4PM-10PM — FRI & SAT: 12PM-10PM — SUN: 11AM-9PM



JOHN HILL ESTATE
Open: Thurs-Sun, 12pm until close
(09) 292 4929
johnhillestate.co.nz
Cnr John Hill & White Roads, Hunua




OPENING HOURS
Tuesday - Sunday: 5-9pm
For bookings or takeaway: 09 217 1684 | 021 2144790
44 Kouka Road, Beachlands
@ pinocchionz Pinocchio Pizza Pasta & more



Pepperjacks
Tuesday - Thursday 9am-8pm | Friday - Sunday 9am-9pm
Happy hour: 3-6pm, Tuesday-Sunday
09 536 4659
manager@pepperjacks.co.nz | pepperjacks.co.nz
190 Jack Lachlan Drive, Beachlands

TUESDAY: Gold Card Discount
WEDNESDAY: Steak Night \$20

Community Calendar

Listings in our Community Calendar are free. Activities must be not-for-profit and have a community focus. For listings, email info@pctimes.co.nz - include activity, day of week, time, venue and contact details.

Weekly events

MONDAY

- **CASUAL BADMINTON:** 7.30-9pm, Te Puru Centre, \$7. Ph:536 5360.
- **ST JOHNS YOUTH:** 6-7.30pm, St Hilda's Church, Wakelin Road.
- **CASUAL TABLE TENNIS:** 7.30-9pm, Te Puru, \$7.
- **SOCIAL TENNIS:** Adults beginners/intermediate 7-9pm Te Puru. Stephen 021 217 7587.
- **KEAS:** scouts for ages 6-8 - 5:30-6:30 Te Puru Scout Hall, tepuru@group.scouts.nz
- **CUBS:** scouts for ages 8-11 - 5:30-6:30 Te Puru Scout Hall, tepuru@group.scouts.nz
- **SENIOR CIRCUIT:** 9:00-10:00 Te Puru Community Centre, \$6
- **JUMPING JUNIORS GYMNASTICS:** ages 1-4 - 11.00-11.45 Te Puru Community Centre, \$14

TUESDAY

- **COASTAL PLAYGROUP** 5 Jacobs Way, Maraetai. 9am-12pm. Bubs till 5 yrs. Sarah 022 082 6432.
- **KOKAKO VOLUNTEER DAY:** 8.15am-3.30pm, Northern Hunua Ranges. Ruth 021 950 915.
- **RUMMIKUB** 1-4pm, Te Puru Centre \$2. Bernadette 021 170 9350.
- **NATTER N STITCH** 12-3pm, Log Cabin, Sunkist Bay. Gill 021 204 6647
- **MARAETAI (LAWN) BOWLING CLUB:** 1pm, Te Pene Road. Tues, Thurs, Sat. Derek 536 4626.
- **CASUAL BADMINTON:** 9:30-11:30am, Te Puru Centre, FREE.
- **TABLE TENNIS** - 1:30pm-3:30pm, Te Puru Centre - Free
- **BASKETBALL:** All ages, Te Puru Centre. Email sport@tepuru.co.nz, 027 775 5320.
- **MEN'S AND INTERMEDIATE/ADVANCED LADIES TENNIS:** 7-9pm, Te Puru. Stephen 021 217 7587
- **HOUSIE/BINGO** 7.30pm, Beachlands Chartered Club, \$15. Ph: 536 6233.
- **POHUTUKAWA COAST CHILDREN'S CHOIR:** For primary school ages, 3.30pm - 5pm, at Ray White 'The Shed', contact Rhianon 0212160224.
- **POHUTUKAWA COAST YOUTH CHOIR:** For intermediate and high school ages, 5.15pm - 6.30pm, at Ray White 'The Shed', contact Rhianon 0212160224
- **POHUTUKAWA COAST COMMUNITY CHOIR:** 7.15 - 8.45pm. coastchoir.com
- **THE GOOD KNIGHTS SOCIAL CHESS** 7:00 - 8:30pm. Beachlands Baptist Church, 59 Third View Ave. Runs fortnightly (usually 1st & 3rd Tues of the month). All ages and skill levels welcome. Contact 022 656 1154 for more info.
- **SENIOR STRENGTH & BALANCE:** 9:30-10:30 Te Puru Community Centre, \$10

WEDNESDAY

- **JP SERVICE:** 5.00-6.30pm, Beachlands Library.
- **COASTAL MAINLY MUSIC** 9am-12pm, for 0-5yrs, 5 Jacobs Way, Maraetai. Sarah 022 082 6432.
- **SENIOR CIRCUIT:** 9am \$6 Te Puru Centre. First Wednesday of the month BYO plate for coffee after.
- **CASUAL BADMINTON:** 10am-12pm, Te Puru Centre. All welcome. FREE.
- **SENIOR STRETCH & STRENGTH:** 9-10am, Beachlands Memorial Hall, \$12 per month (8 sessions).
- **PEST CONTROL DAY:** Southern Hunua Ranges, Ruth 021 950 915.
- **MASTERS SWIMMING:** Wed/Sat, carpool from Bchlds-Mtai. president@manukaumasters.co.nz.
- **CLEVEDON FIRESIDE BRIDGE CLUB:** 10.15am, Clevedon Anglican. Lessons avail. Pauline 299 7433.
- **SCOTTISH COUNTRY DANCE CLUB:** 7.30-9.30pm, Hillpark Primary School Hall. Heather 267 6375.
- **MAHJONG:** 10am-12pm, Te Puru, \$2.
- **QUIZ NIGHT:** 7.30pm. Teams of up to 6, \$5pp Every second week Beachlands Chartered Club 536 6233
- **BADMINTON GAMES:** 8pm, Clevedon Hall, BYO racquet, shuttlecocks provided, \$3. Rebecca 021 1109 675
- **WORN AGAIN OP SHOP,** 9.30am-12pm, The Cottage, 5 K Bay-Orere Rd, Kawakawa Bay.
- **COASTAL TREASURES** Open Wednesday - Saturday, 10am-4pm, 41 Third View Ave, Beachlands. Donations welcome Monday, Wednesday and Saturday before 7pm at 25 Liberty Crescent (unless raining) or phone Tania on 021 644 722 for appointment.

THURSDAY

- **MAINLY MUSIC.** 9.30am, Beachlands Baptist. Morning tea provided. 021 385 535.
- **GENTLE EXERCISE FUN & FRIENDSHIP FOR SENIORS 65YRS+:** \$5 per session 10am-12.00pm St Hilda's Church Hall, Wakelin Road, Beachlands. Contact Christine Bruinisma 021 133 5283.
- **LINE DANCING:** 10-11am, Beachlands Hall. Karen 021 213 6020.
- **TOY LIBRARY:** 10am-12pm, 59 Third View Ave. Can view & reserve toys online. Contact Betty Wilkings 021 492 325.
- **SCOUTS - AGES 11-15 - 6:30-8:30** Te Puru Scout Hall, tepuru@group.scouts.nz.
- **TWICE LOVED OP SHOP:** Open 10am-3pm, 104 Maraetai Drive, Maraetai.
- **S.A.Y.G.O. "STEADY AS YOU GO"** Balance and coordination class. 10.30am. Kawakawa Bay Hall. \$2 Fee for Hall Hire and donations to Age Concern and Community. Friendly, gentle exercises. Contact 0210557370 Barbara Long.
- **COASTAL UKES (UKELLE CLUB)** 1:30 - 2:30pm, at Log Cabin, contact Val 027 393 4999 or Jean 021 023 09043.
- **261 FEARLESS - SOCIAL WOMEN'S RUNNING GROUP:** 10.15-11.15, all ages and abilities welcome. Te Puru Sports Fields by the playground. Term time only.
- **U3A BEACHLANDS-MARAETAI** Fourth Thursday of each month, 10am at Presbyterian Church, Jacobs Way, Maraetai. Monthly speakers, plus special interest groups. Brenda 021 777 171.
- **JUMPING JUNIORS GYMNASTICS:** ages 1-4 - 9:15-10:00 Te Puru Community Centre, \$14
- **CLUB NIGHT:** Open to everyone 5:30-9.30pm, Te Puru Community Centre
- **POHUTUKAWA COAST FRIENDSHIP CLUB (formerly Probus):** Every second Thursday of the month at the Presbyterian Church, 5 Jacobs Way, Maraetai. Secretary: Rhonda Pike 021909724

FRIDAY

- **SENIOR CIRCUIT:** 10-11am Te Puru Centre, \$7 casual, \$60 concession card (10 sessions) Ph 536 5360.
- **SENIOR STRETCH & STRENGTH:** 9-10am, Beachlands Memorial Hall, \$12 per month (8 sessions).
- **COTTAGE CAFE** 10am-12pm, K Bay, 1st and 3rd Fridays of each month, free coffee + food, company.
- **WORN AGAIN OP SHOP,** 9.30am-12pm, The Cottage, 5 K Bay-Orere Rd, Kawakawa Bay.
- **TWICE LOVED OP SHOP:** Open 10am-3pm, 104 Maraetai Drive, Maraetai.
- **COAST YOUTH:** 6:30-8:30pm, Beachlands Baptist Church, 59 Third View Ave. Anyone in intermediate or high school welcome. Contact Majella 021 079 3117 for more info.
- **CLEVEDON ART GROUP** Meets weekly on Fridays, 10am-12noon. McNicol Homestead. New members, beginners to experienced are very welcome. Phone Marian 027 296 3827.
- **FOODTOGETHER POP-UP SHOP** 2pm - 4pm, Beachlands Baptist Church, 59 Third View Ave. Grab a \$15 bag of seasonal, fresh fruit & veg at this community pop-up. We'd love to see you there. Pre-order at foodtogether.co.nz or pop in to pick your own. Contact Meg 021 887 902 for more info.

SATURDAY

- **WORN AGAIN OP SHOP,** 9.30am-12pm, The Cottage, 5 K Bay-Orere Rd, Kawakawa Bay.
- **TWICE LOVED OP SHOP:** Open 10am-3pm, 104 Maraetai Drive, Maraetai.
- **FREE YOGA CLASSES WITH MACA SALAS-PAMPALONI:** 8.15am-9.30am, Beachlands Chatered Club. Contact alma.tribe.nz@gmail.com, 021 751 1760.

SUNDAY

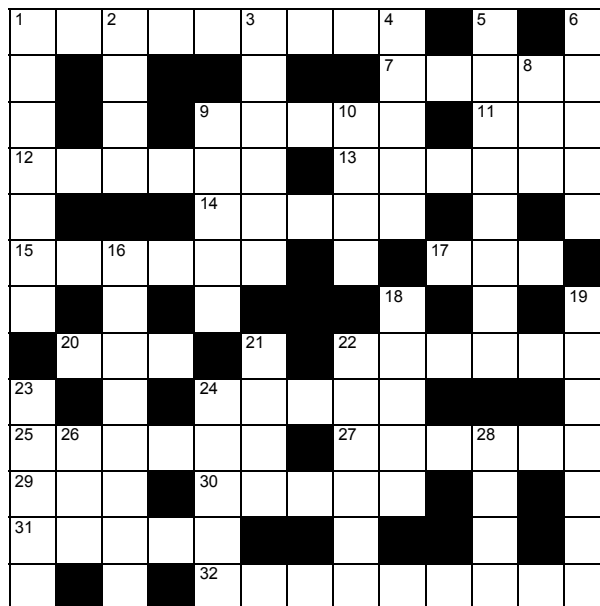
- **TOY LIBRARY:** 9-10am, 59 Third View Ave. Can view & reserve toys online. Contact Betty Wilkings 021 492 325.

Other events and services

OMANA STAMP CLUB SECOND TUESDAY OF THE MONTH, 1.30pm at Maraetai Library. David 530 8869 / Graham 536 6958.

POHUTUKAWA COAST TOASTMASTERS 7-9PM EVERY SECOND WEDNESDAY Sunkist Bay Boating Club. pohutukawacoast@d112tm.org.nz or Michelle 0274 962 504.

RAYWHITE BEACHLANDS CROSSWORD



Brianne Bignell
021 400 979

brianne.bignell@raywhite.com

RayWhite

Across

- Well-meaning, interfering persons (2-7)
- Theatre attendant (5)
- Rub hard, scrub (5)
- Become older (3)
- Faze (6)
- Dive in (6)
- Make slightly angry (5)
- Subtract (6)
- Yes (3)
- Question (3)
- Shrewd (6)
- Saleable commodities (5)
- Fearful (6)
- Dilapidated vehicle (6)
- Golf yardstick (3)
- Trap lure (5)
- Get up (5)
- Bairn (9)

Down

- Humiliate (7)
- Aspect of deportment (4)
- Proper or correct (6)
- Ill-natured (5)
- Polite expression of gratitude (5,3)
- Stream (5)
- Ovum (3)
- Loose (5)
- On top of (4)
- State of confusion (8)
- School assignment (5)
- Hogmanay (3,4)
- Foreshadow (4)
- Abut (6)
- Slip (5)
- Light-headed (5)
- Blubber (3)
- Expel (4)

Answers bottom of this page

BARFOOT THOMPSON & Student Voice

LOCAL STUDENTS' NEWS, VIEWS & LITERARY TALENT

This column features news, views and literary talents of students from Beachlands, Maraetai, Clevedon, Brookby, Hunua, Paparimu, Orere and Ardmore Schools.

One student featured each week will be presented with a certificate and a \$20 book voucher, thanks to Barfoot & Thompson's Beachlands and Whitford branches.



This week's voucher sponsored by Matthew Brown

Stupidus Maximus Villian Description

Stupidus Maximus (A.K.A. Stu) is a nine foot tall cyclops. When he was a baby cyclops, his dad hit him on the head with his club, causing his brain to function, let's say... uniquely. He has one fiery, yellow eye that stares into your soul and makes you forget everything you ever loved. Although, he often has trouble making eye contact so I wouldn't worry about it.

He is stronger than 17 men and has biceps that make even the bravest men tremble. He has numerous battle scars, including a large crater on the side of his head and a couple of missing toes. He is wrapped in obsidian chains and animal hides, making heroes crumble and beg for mercy. Of course, having no brain cells, he didn't know what mercy was, so he ate them.

- by Parker, Year 8, Clevedon School

CROSSWORD ANSWERS

Across: 1. Do-gooders, 7. Usher, 9. Scour, 11. Age, 12. Rattle, 13. Plunge, 14. Annoy, 15. Deduct, 17. Aye, 20. Ask, 22. Astute, 24. Goods, 25. Afraid, 27. Jalopy, 29. Par, 30. Decoy, 31. Stand, 32. Youngster.
Down: 1. Degrade, 2. Gait, 3. Decent, 4. Surly, 5. Thank you, 6. Creek, 8. Egg, 9. Slack, 10. Upon, 16. Disarray, 18. Essay, 19. New Year, 21. Bode, 22. Adjoin, 23. Lapset, 24. Giddy, 26. Fat, 28. Oust.

Classified Ads

Professionals & Trades

FOR SALE

IGNITION FIREWOOD

Quality firewood bulk and bagged delivered. Kiln dried, clean, shed stored firewood. Order online at www.ignitionfirewood.co.nz. Logs and trees wanted.

PUBLIC NOTICES

Franklin Local Board meetings

Meetings will be held on 19 November, 4pm, and on 26 November, 9.30am at the Leslie Comrie Board Room, level 1 Franklin: the Centre, 12 Massey Ave, Pukekohe

Find out more: phone 09 301 0101 or visit aucklandcouncil.govt.nz



SITUATIONS VACANT

BEACHLANDS MEDICAL CENTRE NURSE (F/T & P/T CONSIDERED)

We are looking for an enthusiastic and motivated practice nurse to join our friendly nursing team. Evolution/Medtech an advantage but not essential as training will be given.

Full time hours 35-40 per week. We will consider part time hours, flexibility a must – our practice is open late night Tuesday.

Experience as a practice nurse is preferred but we are happy to train the right candidate.

If you think this is you, we would love to hear from you. Please send a covering letter and your CV to manager@beachmed.co.nz

WORK WANTED

HANDYMAN

You name it... renovations, gardening, retaining, fencing, landscaping, trellis, light building and maintenance work. Ph Gary on 021 903 020 or 536 6358.

MOWER AND CHAINSAW REPAIRS

All small engine repairs, mowers ride-on mowers, chainsaws, weedtrimmers, & chain saw sharpening. No job too small. Free pick-up local area only. Ph: 536 5621 or mob 027 308 7777.

PAINTING/PLASTERING

Interior and exterior quality plastering and painting. Ph: Gary 021 903 020 or 536 6358.

READY GRASS/ LANDSCAPING

Specialising in ready-grass, seeding, lawn levelling, turf cutting & landscaping. Locally based Ph: Adam on 022 015 2805.

RENOVATIONS

Bathrooms, kitchens, toilets - build, tile, glass, flooring, plaster and paint. Start to finish. Exp. builder. Refs avail. Ph: Gary 021 903 020 or 536-6358. Oakes Build Landscape Maintenance. www.oakes.nz.

ROSIE'S GARDENING SERVICES

Weeding, light pruning, weed spraying, over 27 years experience. Ph Rosie: 021 0233 5998

BOATING & MARINE



PROUD DEALERS OF **YANMAR**

UNIT 1C, 190 JACK LACHLAN DRIVE, PINE HARBOUR MARINA
ALLISTER: 022 042 9349 | ALLISTER@MDSL.NET.NZ

Ovlov Marine Pine Harbour

09 536 5249
www.ovlov.co.nz

Sales and Service of outboard motors, inboards, sterndrives and IPS.

Situated in Pine Harbour Marina and mobile we can care for your vessel be it big or small.
Contact the team on 536 5249 or email on joe@ovlov.co.nz for service enquiries and partsp@ovlov.co.nz for spare parts.



BUILDERS



- NEW BUILD
- RENOVATIONS
- DECKS
- BATHROOMS

FOR ALL YOUR BUILDING NEEDS

Call Justin on: 021 460 011 | justin@innovateconstruction.co.nz
Licensed Building Practitioner | www.innovateconstruction.co.nz

BUILDERS



YOUR LOCAL BUILDER

Specialists in architectural new builds and vast residential renovations

Logan Felts 021 564 263



logan@ghbuilding.kiwi.nz

ghbuilding.kiwi.nz



PRODECK LTD

FREE CONCEPT DESIGN & QUOTE

- Decks
- Retaining Walls
- Custom Sheds
- Extensions
- Fences
- Pergolas
- Permits Arranged
- Alterations

PHONE PHIL 021 1647 428

CHIROPRACTOR



- Headaches / Migraine • Dizziness / Vertigo • Neck pain / Whiplash • Trapped nerves • Back pain / Sciatica
- Plantar fasciitis • Sports Injuries / Performance & more...

David Owen DC | Registered Chiropractor

ACC Registered, 25 years experience

02102 144 070 | clevedonchiro@gmail.com | www.clevedonchio.co.nz

DENTAL

WHITFORD DENTAL

We are dedicated to your personal well-being through dental health



- Teeth whitening
- All ceramic tooth filling materials using CerecAC omnicam, 3D technology
- Permanent tooth replacements with dental implants
- For gum health and maintenance call our hygienist Zahraa
- All aspects of general dentistry

FREE DENTISTRY IS AVAILABLE FOR ALL YOUNG ADULTS
Eligible from Year 9 until their 18th birthday. Contact us today to learn more
Evening appointments available
Call us now on 530 8461 or email: info@whitforddental.co.nz

Dentists:
• Dr. Rick Parfitt B.D.S • Dr. Alex Lindsay B.D.S
• Dr. Maad Youhanna B.D.S
Hygienist:
• Zahraa Talib B.O.H

09 530 8461
Whitford Village, Whitford



QUALITY AFFORDABLE FAMILY DENTISTRY

*FREE dental examinations
*excl. xrays

129 Beachlands Rd, Beachlands, Auckland

www.smiledental.co.nz 09 302 0808

DENTAL



INTEREST-FREE DENTAL PAYMENT PLANS

Book online: www.marinadentists.co.nz

190 Jack Lachlan Drive, Beachlands
Call us: 09 535 1074

Great Smiles. Better Health.

At Anthony Hunt Dental we are proud to have been serving our community since 2011.

Leading the way using the latest techniques and technology, we create great smiles and better health for the whole family.



(09) 292 9071 smile@ahdental.co.nz
52 Papakura-Clevedon Road
Clevedon
www.ahdental.co.nz

ANTHONY HUNT
Dental
GREAT SMILES • BETTER HEALTH

DRAINAGE & EARTHWORKS



Drainage Vision Limited

www.drainagevision.co.nz

Mike 027 593 0326

- Drain Unblocking • CCTV Inspections • Certified Drainlayer
- Vacuum Trucks • Pipe & Cable Locations

ELECTRICIANS

Pohutukawa ELECTRICAL
No job too small - No job too big!
Fast, reliable service.
Qualified lighting designer

PH: 536-4076 FREE Quotes
MOB: 021 769 964 www.pohutukawaelectrical.co.nz



AUCKLAND ELECTRICAL & PUMPS

- All Electrical Services and Water Pump Repairs
- Water Pump & Bore Pump Repairs & Installation
- Residential, Rural & Commercial Services
- New House Wiring/Rewiring & Renovations
- Filter & UV Light Replacement

PHONE: 0274741579 | 09 536 4074
admin@aeps.co.nz

LAWNS & LANDSCAPING



- We do the hard yards for you -

Email: randrgardenservice@gmail.com

Your local lawn and garden specialist
Call Richie: 021917332

Qualified Landscape design and Implementation
Call Roanne: 0272528183

Professionals & Trades

LAWNS & LANDSCAPING



LANDSCAPE DESIGN
SWIMMING POOL
OUTDOOR KITCHEN
PERGOLA AND DECKS
LAWN AND GRASS
FENCE AND GATES

PH: 0800 500 889

PLUMBING & GAS FITTING



YOUR LOCAL PLUMBER & GASFITTER

CALL 027 27 27 656

PLUMBING - GASFITTING - DRAIN UNBLOCKING

Burst Pipes | Water Filters | Hot Water Repairs
Bathrooms & Kitchens | Scheduled Maintenance
Emergency After Hours

www.wgw.co.nz

P: 027 27 27 656

E: service@wgw.co.nz



ROOFING



RE-ROOFING | NEW ROOFS | ROOF COATINGS
CONCRETE ROOF TILE SPECIALIST | CONCRETE TILE REPAIRS
GUTTER REPLACEMENT | INTERNAL GUTTER CONVERSION

0800 766 350 | www.roofingnz.co.nz | info@roofingnz.co.nz

SCAFFOLDING

QUALITY | RELIABLE | WHITFORD BASED | LAYHER SCAFFOLD SYSTEM



Contact Dylan 021 239 4276 | dtswrightsc scaffolding@gmail.com

SURVEYOR



Your local Pohutukawa Coast Surveyor

admin@surveyplus.co.nz | 020 4 SURVEY (020 4 787839)

TREE SERVICES

CALL NATHAN 021 196 6509

CHIPPING

LAND CLEARING

HEDGE TRIMMING



TREE PRUNING

TREE REMOVAL

STUMP GRINDING

FIND US ON FACEBOOK coastalcutters@hotmail.com

TREE SERVICES



Your Local Arborists
Your problem is our specialty!

- Tree Care, fine pruning and removals
- Shelterbelt removals and chipping
- Palm cleaning and hedge trimming
- Hedge trimming
- Tree Light installations
- Small Hiab Lift and Shifts

CALL PHIL FOR A FREE QUOTE
022 607 4455

CHECK OUT
jessepcontracting.co.nz

MEAT SUPPLIER



- For all your homekill and hunting processing.
- Vacuum packing standard & delivery available.
- Qualified butchers, expert advice, friendly service.
- Sausages (gluten free available), bacon, salami, biersticks, biltong, smoking and curing.

027 632 8979

admin@meatworx.co.nz
www.meatworx.co.nz

TYRES



YOUR TRUE TYRE PROFESSIONAL ON THE COAST

- Friendly Reliable Service
- Locally Owned & Operated
- Over 20 Years Experience
- For ALL Your Tyre Needs

Agricultural, Batteries, Car / Passenger, Earthmover, Mag & Tyre Packages, Puncture Repairs, Truck / Commercial, Wheel Balancing, 4WD / Off Road, 24/7 After-Hours Callout

Call Mike 021 901 034 | sales@tyreguard.co.nz | www.tyreguard.co.nz

MECHANICAL REPAIRS

MARAETAI AUTOMOTIVE

All Makes & Models | All Types of Repairs
Petrol - Diesel - European Vehicles - Loan Cars
• Servicing • WOF • Brakes • Clutches • Wheel Alignments
• Tyres • Transmission Services • Batteries • Welding
• Cambelts • CV Joints • Auto Electrical Repairs

131 Maraetai Drive, Maraetai
Ph: 536 6542



ALL WORK GUARANTEED
HOURS: Mon - Fri: 8am-5pm

MARTY'S SMALL MOTOR MECHANICAL SERVICES

For all your servicing and mechanical repairs

FARM QUADS | 2 WHEELERS | RIDE ON MOWERS

Pick up and drop off if required

Marty: 021 0233 0277, marty63@extra.co.nz



AA APPROVED REPAIRER,
AA BATTERY STOCKIST
MTA ASSURED



WE ARE YOUR LOCAL, HONEST AND TRUSTED
AUTOMOTIVE REPAIRER. POP DOWN AND SEE US.
WE'LL LOOK AFTER YOU AND YOUR VEHICLE.

- ALL MECHANICAL REPAIRS
- WOF
- BRAKES
- TYRES
- AUTOMOTIVE AIRCON SERVICING

57 THIRD VIEW AVENUE, BEACHLANDS
09 536 6664

PLUMBING & GAS FITTING



DYNAMO PLUMBING
MAINTENANCE SPECIALIST

24 hours/7 days A WEEK • NZ CERTIFIED PLUMBER
LOCALLY OWNED & OPERATED

0800 175 988

office@dynamoplumbing.co.nz



Land Clearing
Tree Maintenance
Tree removal
Stump Grinding
Hedge Care

Phone Doug
021537171 • 09 5378595

info@dstrees.co.nz
www.dstrees.co.nz

VETERINARY

Franklin Vets Beachlands

1/43 Kouka Road,
Pohutukawa Coast Shopping Centre
538 0010 | beachlands@fvs.co.nz

Mon-Fri 8am-6pm
Sat 9am-3pm

www.franklinvets.co.nz

Come meet our local team and tour our Best
Practice & Cat Friendly accredited facility



FranklinVets

POHUTUKAWA COAST VETS

LOCALLY OWNED &
OPERATED IN BEACHLANDS
Book an appointment
Ph: 09 320 1472
Or book online
www.pcvets.co.nz

reception@pcvets.co.nz | 43 Wakelin Rd, Beachlands

WATER



The highest quality water for all your household,
property and commercial needs

Ask for our pure water by name

Manukau Quarries LP
885 Whitford-Maraetai Road, Beachlands | 09 2630220



Ph 0800 826 525
sales@franklinwater.co.nz
www.franklinwater.co.nz

Supply, Installation & Servicing of:

- Water Pumps, Filter Systems & UV Light Systems
- Tank Cleaning
- Replacement Filters
- Loan Pumps available on ALL House Pump Servicing & Repairs

Bores / Pumps / Tank Cleaning / Filtration Systems
Solar Pump Supply & Installation

BUSINESS DIRECTORY

ACCOUNTING SERVICES
 Probiz Systems Ltd, Sharon Bramley 021 122 8059 OR 530 8036
 Diane Myers CA, diane@myersca.co.nz 292 9470
 Business Allsorts, MYOB & Xero Experts 536 5850
 Peat Johnson Murray 869 2091

AERIALS, TV & HOME THEATRE
 Auckland Wide Electrical 536 6800, 021 998 665

AGGREGATES
 Beachlands Mitre 10 536 6567

APPLIANCE SERVICING
 Axial appliance servicing Service@axial.co.nz 573 0877
 Appliance Wizard Ltd Ph Paul 0275 784 226

ARCHITECTS
 Peter Diprose www.diprose.co.nz 530 9065 or 021 125 1498

ARCHITECTURAL PLAN & DESIGN
 Ross J Willoughby 530 9358
 RBG Ltd 027 260 8005

AUTO ELECTRICIAN
 Mobile Auto & Marine 0800 662 352

BARBERS
 Joe's Barbershop 536 7265

BEAUTY
 Xtreme Beauty & Barbers 600 2325 or 021 992 686
 www.xtremebeauty.co.nz

BED & BREAKFAST
 Brookwood Lodge, Beachlands. 536 6975 or 0274 796 453

BLIND SERVICES
 Blindworks - For all New Blinds - Plus Blind Cleaning and Repairs
 www.blindworks.co.nz 0800 999 229

Onsite blind cleaning & repairs - plus new blinds
 info@onsiteblinds.co.nz 0508 253 262

BOOKKEEPERS
 Business Allsorts, MYOB & Xero Experts 536 5850

BUILDERS
 Bryant Builders Ltd 027 493 5507 or 027 692 8777
 GH Building 021 564 263
 Michael Nootebos 536 6628 or 0274 799 776
 Stehr Brothers Construction 021 939 008
 Stockade Builders Ltd 021 570 836

BUILDERS' SUPPLIES
 Morton Timber Co. Clevedon 292 8656
 Beachlands Mitre 10 536 6567

CAR VALET
 Rinse and Shine Mobile Car Valet 021 180 3335

CARPET CLEANING
 Aladdin Carpets, Phone Michelle 09 537 4320

CELEBRANT
 Ceremonies by Diana, www.celebrantdiana.co.nz 021 152 9925

CHAINSAW SALES/SERVICE/REPAIRS
 Greenmount Mowers & Chainsaws 09 970 4816

COMPUTER REPAIR
 Wi-Fi & Internet, Home and Office IT Support
 Call Graeme Thomas 027 429 0677

CONCRETE SERVICES
 Aaron Ross Concreting 0210 233 2673
 We Lay Concrete Ltd. 021 038 1086
 Murray Douglas Limited 027 498 5267
 Pro-Floors Concrete Ltd, Call Grant 0274 951 280

COSTUME HIRE
 Clevedon Costumes and Vintage Apparel 022 018 2711

DENTISTS
 Whitford Dental Group 530 8461
 - Dr Rick Parfitt, Dr Alex Lindsay & Dr Susan Clow
 - Hygienist - Shelley Chadwick & Zahraa Talib 530 8461
 Anthony Hunt Dental Ltd, Dr Anthony Hunt, Clevedon 292 9071
 Marina Dentists Pine Harbour 536 4361
 Smile Dental Beachlands
 - Your local dentist. New patients welcome. 022 8888 171
 - Free examination since 1996 09 302 0808
 www.smiledental.co.nz 0800 4 smile

DIGGER & TRUCK HIRE
 The Little Digger 027 278 0335 or 536 4424
 Digger Landscapes www.diggerlandscapes.nz 021 415 832
 Bizzy Bobcats & Diggers - call Mark 027 494 4414

DOCTORS
 Beachlands Medical Centre 536 6006

DRAINLAYERS
 Vibe Earthmovers and Drainage call Vincent 0272 225 377
 Probuilt Earthworks Drainage call Gary 021 617 611
 Drainage Vision Ltd call Mike Adams 027 593 0326
 Certified drainlayer, CCTV inspections, drain unblocking

EARLY CHILDHOOD EDUCATION
 Whitford Early Learning Centre 530 8726
 Clevedon Kidz Early Childhood Centre 292 8358

EARTH MOVING CONTRACTORS
 Riordan Contracting 09 530 9429 OR 027 430 9429
 Stehr Brothers Civil Construction 021 939 008
 Pohutukawa Coast Earthmoving, Grant 027 475 8468
 www.brookbycontracting.co.nz Earthworks/Cartage/Drilling
 027 530 9290

ELECTRICIANS
 Auckland Electrical & Pump Services 536 4074, 027 4741 579
 Pohutukawa Electrical 536 4076, mob 021 769 964
 Positive Electrical Services 021 801 606

ENGINEERS - CIVIL/ENVIRONMENTAL/STRUCTURAL
 Fraser Thomas Ltd 278 7078

FENCING CONTRACTORS
 Craig McLeod 027 292 5844
 White Fencing: 292 8064, 0274 957 868
 - rural fencing, retaining walls www.whitefencing.co.nz

FLOORING
 Nicks Floor Sanding 536 6916, Mobile 021 875 456

FLORISTS
 Clevedon Flowers, www.clevedonflowers.co.nz 292 9540

FOUNDATIONS & FLOOR SLABS
 Pro-Floors Concrete Ltd, Call Grant 0274 951 280

FUNERAL DIRECTORS
 Resthaven Funeral Services
 Rachel Benns & Raewyn Proctor 533 7493, 267 2530
 Ensom Funeral Services
 John Ensom & Jo Nevin 299 6646 or 524 6765
 Fountains Funeral Directors & Monumentalists -
 Papakura, Franklin and Manurewa 298 2957
 Howick Funeral Home Robert Johnstone - Mark Rowley 534 7300
 Souly Funerals Beachlands 0800 47 68 59

GARAGE DOORS
 Repairs & Service, Metro Garage Doors 263 6608

GARDEN CENTRE
 Beachlands Mitre 10 536 6567

GARDENING
 Rosie's Gardening Service 021 0233 5998

GEOTECHNICAL SERVICES
 Fraser Thomas Ltd 278 7078

GIBSTOPPING
 Gib stopping & painting - Tony 0274 966 394 or 536 6477

GLASS AND GLAZING
 Manurewa Glass 266 7794
 Howick Glass 535 4180

GUTTER CLEANING
 Skyhigh Roof and Gutter Cleaning Ltd
 Website: www.skyhigh.nz 021 951 719

HAIRDRESSING
 Hair Do's @ Maraetai, ph Denise 0274 599 901
 Cooper Hairdressing, 16 Te Pene Rd, Maraetai 027 329 1781

HANDYMAN SERVICES
 Local Handyman: 536 5050 or 021 156 7370
 Oakes Build Landscape Maintenance, www.oakes.nz 021 903 020

HEAT PUMPS
 Positive Electrical Services 021 801 606
 Auckland Wide Electrical 536 6800
 AES - Auckland Energy Solutions
 Website: www.aes.nz Phone: 09 575 1191

HOUSE WASHING
 BEST Property Services 021 366 615
 Just Clean Me, Exterior Cleaning Services 022 089 2383
 House washing, gutter cleaning, roof treatments, water blasting.

INTERIOR DESIGN
 I Like Space Ltd 021 281 1610

JEWELLER
 Paul Taylor Manufacturing Jewellers 536 4200
 Repairs/Remodelling/Valuations/Insurance Replacements
 Shop C/7, 129 Beachlands Rd, Pohutukawa Coast Shopping Centre

KITCHENS
 Kitchen Craft Ltd, Ph Warren 09 274 4221
 for Sizzling Kitchen Design & Cabinetry www.kitchencraft.co.nz

LANDSCAPING
 Eastside Landscapes 021 484 158
 Nicky Auld - landscape design, consultations 021 972 534

LAUNDROMAT
 Kiwi Laundry Co, www.kiwilaundryco.co.nz 022 463 8416
 7 DAYS at GAS Maraetai, 131 Maraetai Drive, Maraetai 536 4218

LAWNMOWING & GARDENING SERVICES
 JIMS MOWING Beachlands - Frank 027 415 3657
 Greenacres - Stephen Howe 292 4165 or 021 2266 753
 Prolawns (Beachlands based) Shane 021 746 887
 R&R Garden ServicesRichie: 021 917 332, Roanne: 027 252 8183
 Coastal Gardener (Beachlands based) Darryl 022 360 3065

LAWNMOWER SALES/SERVICE/REPAIRS
 B'Inds/M'tai mower/chainsaw repairs 536 5621 or 027 308 7777
 Greenmount Mowers & Chainsaws 09 970 4816

LEGAL SERVICES
 Sutcliffe Matson Law 09 279 8351 or 021 327 030

LOCKSMITHS
 Local Locksmith - Tony 536 5050 or 021 156 7370
 Armstrong Smarter Security 0800 506 111

LPG SUPPLIERS
 Matagas 0800 954 427

MARINE AND BOATING
 Ovlov Marine Pine Harbour LTD 536 5249

MECHANICAL REPAIRS
 Maraetai Automotive 536 6542
 Pohutukawa Motors, 57 Third View Ave, Beachlands 536 6664
 Garaway Autos 022 395 6185
 Luke's Garage Ltd 09 218 6442 / 022 301 0412

MIRRORS
 Howick Glass 535 4180

OUTBOARD REPAIRS/ MARINE ENGINEERING
 Eastern Marine - Mercury Certified Service Centre - Outboards,
 stemdrive, petrol & diesel. 536 6252

PAINTERS & DECORATORS
 East Auckland Painting Ltd 027 619 2619
 specialstlinings.co.nz We fix, stop, and paint 0800 54 64 64
 Painta Property Services-Beachlands+Sth East Ak 021 101 6937
 Interior / Exterior / Roof / Fences - mikegrubb@painta.co.nz
 Paint, waterblasting, plaster, tidy up removal, 027 525 4024
 aggregate sand delivery. Joel@insulape.co.nz

PEST CONTROL
 Coastal Pest Solutions (including rats, rabbits, possums, pest birds,
 wasps & bees) 536 6020 or 0273 932 125
 Professional Pest Control 536 6690 or 021 078 3622

PET ACCOMMODATION
 Fairfield Pet Lodge, Clevedon 027 222 0307
 Pets at Whitford Spa and Stay (PAWSS) 530 8860

PHARMACIES
 Unichem Beachlands Pharmacy 536 6500, fx 536 6590

PHYSIOTHERAPIST
 Beachlands Physio beachlandsphysio.co.nz 09 222 4120

PLUMBERS
 Dynamo Plumbing 0800 175 988
 BF Brown Plumbing & Drainlaying 0800 477 455

PLUMBERS & GASFITTERS
 Ashby Plumbing & Gas 292 2445 or 0272 553 499

PROPERTY MANAGEMENT
 Rent People Ltd 0800 426 580
 Ray White Lighthouse Licensed Real Estate 536 7011
 Barfoot & Thompson Beachlands 536 4990

PUMP SALES & REPAIRS
 Auckland Electrical & Pump Services 536 4074, 0274 741 579
 Malmaks Water Shop 530 8872, 021 353 158
 Allwater Pumps and Supplies Ltd 09 536 5444, 027 536 5444
 Clevedon Pumps & Filtration 027 479 7741

QUARRY
 Manukau Quarries 263 0220

QUANTITY SURVEYORS
 Hope & Associates - Residential estimating specialist 021 882 312

REAL ESTATE AGENTS
 Barfoot & Thompson Beachlands 536 4990
 Barfoot & Thompson Whitford 530 8292
 RE/MAX Clevedon 292 8388
 Ray White Lighthouse Licensed Real Estate 536 7011

ROOF PAINTING SERVICES
 Master Tradesman. Text details for fast service: 027 517 8494
 Visit our website: www.5starroofpainting.co.nz

ROOF SOFTWASHING
 Skyhigh Roof and Gutter Cleaning Ltd
 Website: www.skyhigh.nz 021 951 719

ROOFING SERVICES
 Alba Roofing 021 584 530
 Roofing & Spouting NZ Ltd 021 766 260

SCAFFOLDING
 Scaffold Connect Ltd 021 235 5963 or 09 576 5879
 DTS Wright Scaffolding Ltd 021 239 4276

SECURITY SYSTEMS
 ADS Security Ltd (alarms & monitoring) 536 6860
 Armstrong Smarter Security and Alarms 09 274 0999

SEPTIC TANK CLEANING
 SST Services phone Rob 09 2947611 or 0274 967430

STORAGE
 Beachlands Self Storage 021 281 5355

SURVEYORS - LAND
 McInnes, Read & Lucas Ltd 298 7288
 Fraser Thomas Ltd 278 7078
 Churchill Land Development Services Ltd 273 4182
 Survey Plus Ltd 020 4 SURVEY (020 4 787839)

TAXIS/TRANSPORT/SHUTTLES
 Coast Shuttle - local hire & airport trips 536 6488 or 0274 722 613
 Omana Shuttles - Airport Transfers 536 5935
 Driving Miss Daisy 09 534 7712 or 021 174 9999
 Country Roads - Private Hire, Airport Transfers/CBD 021 084 28757

TILING
 Wall & floor tiling & waterproofing, phone George 027 534 3741

TRAVEL - INTERNATIONAL & DOMESTIC
 Clevedon Travel Brokers chrisshyashby@ttb.co.nz 027 273 9701
 Travelselect Beachlands call Mark or Sam 536 6730

TREE SERVICES
 Coastal Cutters - coastalcutters@hotmail.com 021 196 6509
 Jessep Contracting - JessepContracting.co.nz 022 607 4455

TRUCK & BOBCAT HIRE
 Murray Douglas Limited 027 498 5267

TYRES - SALES & SERVICE
 Maraetai Automotive 536 6542
 Pohutukawa Motors 536 6664
 Tyre Guard - Mobile Tyre Service, Call Mike 021 901 034

UPHOLSTERY & CANVAS
 Eastern Cover Centre. Boat & Outdoor Furniture Covers 535 7524

VALUERS - PROPERTY
 Property Valuations Ltd, Papakura 299 7406

VETERINARY SERVICES
 Franklin Vets - Pohutukawa Coast Shopping Centre, 538 0010
 Beachlands, Open: Mon-Fri: 8am-6pm Sat: 9am-3pm
 Pohutukawa Coast Vets - 43 Wakelin Rd, Beachlands 320 1472
 Open: Mon-Fri: 8am-6pm Sat: 9am-12pm

WALLPAPERING
 Lucy Cui 536 5899 or 021 174 8466

WATER DELIVERY
 Beachlands/Maraetai Water Supply 273 9763
 Clevedon Water 292 8099
 Whitford Water Supplies 530 8164
 Maraetai Blue Ltd 536 6437, 027 536 6437
 Carlton Haulage 0800 420 246
 Coastal Water Cartage 0508 262 7825
 WET AZZ - www.wetazz.co.nz 0800 WET AZZ (0800 938 299)
 A Plus Water 021 0727 163
 PROWATER - Support Local, Ph Shane/Sheridan 021 530 727

WATER TANK CLEANING & REPAIRS
 Maraetai Blue Tank Cleaning Call Jacob 021 029 84170
 Clevedon Pumps & Filtration 027 479 7741

WATER TREATMENT
 The Filter Guy Ltd 0800 159 858
 Malmaks Water Shop 530 8872, 021 353 158
 Allwater Pumps and Supplies Ltd 09 536 5444, 027 536 5444
 Clevedon Pumps & Filtration 027 479 7741

WEDDING VENUE
 Te Puru Centre 536 5360
 Maraetai Beach Boating Club 536 6649

List your business here to be seen by more than 6,500 homes each week for less than \$10 per week!
 A 6-month, single line listing costs just \$200+gst.

EMAIL: advertising@pctimes.co.nz | PHONE: 021 026 14467