

Pōhutukawa Coast Times

Issue 1555

13 December 2024

Hundreds turn out for Clevedon Christmas Parade



More photos available at the Pōhutukawa Coast Times Facebook page!

HO HO HO
MERRY CHRISTMAS
 Ian 027 285 9314
 Jenny 0204 000 2564
 Nicolette 027 702 9157
 Clare 021 206 6822
SPECIAL AGENTS 003
 BARFOOT & THOMPSON

We're here for **you** and all your property management needs!
BARFOOT & THOMPSON | Beachlands
 PROPERTY MANAGEMENT | 09 536 4990

RayWhite BEACHLANDS
 Your Premium **Choice** in Property Management
 Ray White Beachlands P : (09) 536 7011
 Lighthouse Real Estate Limited E : beachlands.nz@raywhite.com
 Licensed (REAA 2008) W : rwbeachlands.co.nz
 A : 81 Second View Avenue, Beachlands

MORTON TIMBER
 Visit us 226 North Road, Clevedon 2248
 Ph: 09 292 8656
 Email: office@mortontimber.co.nz
 Web: www.mortontimber.co.nz
 Facebook: mortontimber.clevedon

PICK "N" MIX
RETAINING 200 X 50 H4
 4.8m lengths \$6.50 per lineal metre plus gst.
NZ RAILWAY SLEEPERS
 200 x 150 2.1m long \$70.00 each plus gst.
FRAMING 90X45 H3.2 SG8 KILN DRY
 4.2m lengths only \$3.55 per lineal metre plus gst.
MACROCARPER SLEEPERS
 200 x 100 2.4m long \$56.00 each plus gst.
BSN SPRINCLIP WIRE STRAINER
 \$3.70 each plus gst.

OPENING HOURS
 MONDAY - THURSDAY 7:30AM TO 5:00PM
 FRIDAY 7:30AM TO 4:30PM & SATURDAY 7:30AM TO NOON

INSIDE: Community gathers for Playcentre playground opening p3 | Lifestyle feature p7

RayWhite
 Second Generation Real Estate
EXPERIENCE the difference...
 Ray White Beachlands P : (09) 536 7011 or (021) 400 979
 Lighthouse Real Estate Limited E : beachlands.nz@raywhite.com
 Licensed (REAA 2008) W : rwbeachlands.co.nz
 A : 81 Second View Avenue, Beachlands

EmbroidMe
 East Tamaki
 We Supply & Brand
 Uniforms & Promotional Products
 Embroidery, Printing, Lettering, Dye Sublimation and more...
 Cnr Smales and Springs Rds, East Tamaki - 09 265 0300

STIHL SHOP BOTANY
FREE Accessories With selected tools
 16(H) Bishop Dunn Place, Botany. 2163
 Phone 271 3000 www.stihlshopbotany.co.nz
OPEN 7 DAYS

Deadlines: Display advertising - 5pm Thursday. Classified and News - midday Friday

advertising@pctimes.co.nz | www.pctimes.co.nz

Pohutukawa Coast Times

GET IN TOUCH

E: info@pctimes.co.nz
W: www.pctimes.co.nz
F: facebook.com/pctimes
A: PO Box 5, Beachlands 2147

EDITOR

Leanne Chamberlin
 021 426 207
 leanne@pctimes.co.nz

ADVERTISING

Melody Cutfield
 021 0261 4467
 advertising@pctimes.co.nz

CLASSIFIEDS

advertising@pctimes.co.nz

DELIVERY/DISTRIBUTION

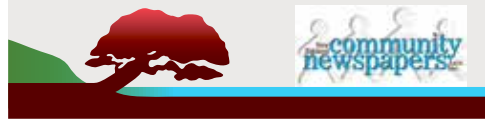
distribution@pctimes.co.nz

ACCOUNTS

Pam Rutherford
 accounts@pctimes.co.nz

The Pohutukawa Coast Times is distributed weekly to 6500 homes and businesses in: Whitford, Brookby, Beachlands, Maraetai, Clevedon, Ardmere, Alfriston, Kawakawa Bay, Orere Pt, Hunua, Paparimu

Member of the New Zealand Community Newspapers Association



The PC Times 20 years ago:
 10 December 2004: Native bush next to Whitford Quarry "must be protected".



Weekly Tide Chart

| Date | High | Low | Next High | Next Low |
|--------|-------------------|-------------------|-----------|----------|
| 13 Fri | 5:58am ▲ 3.1m | 12:01pm ▼ 0.7m | | |
| 14 Sat | 12:27am ▼ 0.5m | 6:57am ▲ 3.2m | | |
| 15 Sun | 1:23am ▼ 0.4m | 7:53am ▲ 3.3m | | |
| 16 Mon | 2:16am ▼ 0.4m | 8:45am ▲ 3.4m | | |
| 17 Tue | 3:07am ▼ 0.4m | 9:35am ▲ 3.4m | | |
| 18 Wed | 3:55am ▼ 0.4m | 10:24am ▲ 3.4m | | |
| 19 Thu | 4:42am ▼ 0.5m | 11:11am ▲ 3.3m | | |

MARINE FORECAST - VHF CHANNEL 19
 AUCKLAND FORECAST - 0900 999+ YOUR STD

Pine Harbour Electrical
 Unit 1A Pine Harbour Marina
 P: 536-6177
 W: www.phe.co.nz

Guest editorial by Clevedon Community & Business Association

Come and experience summer in Clevedon

Promoting Clevedon as a visitor destination is a big focus of the work we do at the Clevedon CBA. With so many exceptional attractions, experiences and events to offer it's impossible to list them all.

Whether you're into picturesque walks, a spot of fishing, or sporting events - summer in Clevedon has you covered. Here's a short guide to some of the not-to-miss attractions and events in Clevedon this summer. The good news is these are right on your doorstep, don't involve long drives in hot cars, and - we've done the research - there's plenty of ice cream available en route to Clevedon regardless of which direction you're coming from.

Waitawa Regional Park

A must-visit park this summer with beach, walking tracks and picturesque picnic spots. Waitawa Regional Park is also popular with kayakers with overnight camping facilities available (only accessible by sea kayak).

Duder Regional Park

Located on Whakakaiwhara Peninsula, which cuts out into the Tāmaki Strait, Duder Regional Park offers a range of walking tracks including a beach track, coastal walk, farm loop and the stunning Whakakaiwhara Pa walk.

Hūnua Traverse

The Hūnua Traverse is a 44.5-km two-way ride encompassing public and private roads between Clevedon Village and Kaiua on the Seabird Coast. The majority (26km) of the Hūnua Traverse follows Watercare service roads within the Hūnua Ranges Regional Park. Featuring steep bush-clad hill climbs, two scenic reservoirs and two picturesque campsites, the Hūnua Traverse is perfect for ebikes. The terrain is also fantastic for riders of analog bikes with an adequate level of fitness. <https://www.hunuatraverse.co.nz/>

Riverhaven Armland

Connect with nature and explore the beautiful surrounds of Riverhaven. You can choose from self-directed walks or guided tours through Riverhaven's garden and sculpture trail. Located on North Road, a short drive from Clevedon village. www.riverhavenartland.com

Clevedon Half Marathon

If you need a post-holiday fitness goal to work towards, why not enter the Clevedon Half Marathon on 2 February 2025. With a range of distances for walkers and runners, there's something for all ages and abilities. www.clevedonhalfmarathon.co.nz

Clevedon Art Trail

Immerse yourself in the "Art" of rural living on a self-drive journey through the Clevedon Art Trail.

Meet artists in their countryside studios,

visit rustic art galleries, create with artist groups, learn new skills at workshops. The Clevedon Art Trail is being held on 14-16 March 2025.

<https://clevedonarttrail.co.nz/>

Polo events for the whole family

Pack a picnic, bring the family, a rug or chair to sit on - and park up at one of these not to be missed events (Dec-Mar), running every weekend with finals from 12pm each Sunday. On weekends with no scheduled tournaments, club games are held at both Auckland and Holololo Polo Clubs. See <https://www.clevedon.co.nz/news-and-updates/polo>


2024/5 tournament schedule:

- 7/8 December Kirkpatrick Memorial Tournament (Holololo) FREE
- 21/22 December Northern Polo Association Tournament (Holololo) FREE
- 4/5 January Ardmore Tournament (Ryburn Park) FREE
- 25/26 January Charity Tournament (Ryburn Park) FREE
- NZ Polo Open 11-16 February - NZ Polo Open (Auckland Polo Club, Ryburn Park). Tickets available at <https://nzpoloopen.flicket.co.nz/>
- 23/24 March - Brinks Tournament (Ryburn Park) FREE

Clevedon also has a range of cafes and hospitality options catering to all tastes and budgets, many with outdoor seating - perfect for the warmer summer weather. And why not browse through some of Clevedon's boutique retail stores?

The Clevedon CBA website has a full listing of summer events, as well as a range of activities, attractions, cafes and hospitality options, and local retailers - visit clevedon.co.nz.

We look forward to seeing you in Clevedon this summer!



MALMAKS WATER SHOP

CLEAN WATER

WE ARE NOW AN AUTHORISED DEALERSHIP FOR

DAB & GRUNDFOS

REPAIRS & MAINTENANCE ON ALL PUMP BRANDS

STOCK AND SELL

- Pumps • UV Lamps
- All in one pump box
- Carbon & Sediment Filters
- Salt • Bore Softeners

PH: 530 8872

Whitford Village

www.malmakswater.com

• DAB • GRUNDFOS • GREENWAY • VIQUA

• ATLAS FILTRI • ALPINE PURE • STERILIGHT

• PURETEC • DAVEY • HANSEN

SERVICING POHUTUKAWA COAST FOR OVER 10 YEARS



SUTCLIFFE MATSON
LAW

LAWYERS SERVING THE POHUTUKAWA COAST

38A Wakelin Road, Beachlands

Available Monday - Friday, by appointment



photo credit: Tio&Co Photography

BREANNA FULLER AND **BRADEN MATSON**
BCOMLLB (HONS) | ASSOCIATE MA/LLB | DIRECTOR

Conveyancing, Refinancing, Wills,
 Powers of Attorney, Business Transactions
 Family & Commercial Law
 and other general legal needs.

We are happy to meet after hours
 at your home for your convenience.

Ph: 09 279 8351 or Braden: 021 327 030
braden@smlaw.net.nz | breanna@smlaw.net.nz
www.sutcliffematsonlaw.net.nz



Pohutukawa Coast
PRESBYTERIAN CHURCH

DECEMBER SERVICES

| | | |
|--------|---------|---------------------------|
| 15 Dec | 9am | Kidz Club & Youth Breakup |
| 22 Dec | 9am | Impossible Dream Service |
| 24 Dec | 11.30pm | Carols by Candlelight |
| 25 Dec | 10am | Christmas Day |
| 29 Dec | 9am | Last Sunday of the year |

Playgroup Tues & Wed 9am - 12pm

Food bank 027 304 4998 Phone or text

5 Jacobs Way, Maraetai



PRIMA
COLLISION REPAIRS

Complete panelbeating and car painting

East Tamaki: Unit B 154 Harris Rd, East Tamaki, Auckland 09 274 4778
 Manukau: 2/117 Kerrs Rd, Manukau, Auckland 09 268 9340

Community gathers for Playcentre playground opening

Children who attend Beachlands Maraetai Playcentre are delighted with their new playground, which was officially opened in November.

The playground upgrade was made possible thanks to main sponsors Pōhutukawa Coast Rotary Club, along with the support from the Takutai Trust, two local families, plus money raised from the local community and fundraising efforts supported by Coastal Treasures.

Mitre 10 donated materials, and many

local businesses donated generously to help the playcentre achieve its targets.

The playground was blessed by local iwi Ngāi Tai ki Tāmaki, followed by speeches from Beachlands Maraetai Playcentre president Kendall McLaughlin and member Olivia Herring.

Pōhutukawa Coast Rotary Club president John Stacey cut the ribbon, alongside playcentre alumni Lola Jean Herring and Lincoln McLaughlin.



Beachlands Maraetai Playcentre children celebrate their new playground.

Metlifecare now second largest employer on the Coast



Metlifecare's Pōhutukawa Landing's new care home team.

Pōhutukawa Landing care home has welcomed its first resident, who recently moved the short distance from one of Pōhutukawa Landing's village apartments to her new ground floor room which opens onto a communal garden area.

The new care home team are all new employees who hail from the Pōhutukawa Coast and surrounding areas, making Metlifecare the second largest employer on the Coast after Woolworths.

Pōhutukawa Landing (including the independent village and care home) now has around 146 residents and employs around 26 staff in roles including kitchen, cleaning and maintenance teams to nursing, management and administration staff.



**OUR LADY STAR OF THE SEA
CATHOLIC PARISH**

We celebrate Mass at 4.30pm on the first Saturday of the month. On other Saturdays there will be Celebration of the Word with Holy Communion.

**St Hilda's Church,
3 Wakelin Road, Beachlands**

Visit our website for details
www.beachlandsc.com



**Howick
FUNERAL HOME**
New Zealand owned & operated since 1993



Robert Johnstone & Kevin Kelleher

A privilege to care for your family



Every life is special, we understand that. Let us pay tribute to the life of your loved one and celebrate the unique way they have touched you, your family and those around you.

For a personal, professional service contact us today to discuss your options:
35 Wellington St, Howick | Phone 534 7300 | www.howickfuneralhome.nz



**BEACHLANDS
MEDICAL CENTRE**

Christmas 2024 / New Year 2025 Holiday Hours

| Day | Date | Hours | Status |
|-----------|------------------|-----------------|--------|
| Monday | 16 December 2024 | OPEN 8.15AM-5PM | |
| Tuesday | 17 December 2024 | OPEN 8.15AM-5PM | |
| Wednesday | 18 December 2024 | OPEN 8.15AM-5PM | |
| Thursday | 19 December 2024 | OPEN 8.15AM-5PM | |
| Friday | 20 December 2024 | OPEN 8.15AM-2PM | |
| Saturday | 21 December 2024 | | CLOSED |
| Sunday | 22 December 2024 | | CLOSED |
| Monday | 23 December 2024 | OPEN 8.15AM-5PM | |
| Tuesday | 24 December 2024 | OPEN 8.15AM-2PM | |
| Wednesday | 25 December 2024 | | CLOSED |
| Thursday | 26 December 2024 | | CLOSED |
| Friday | 27 December 2024 | | CLOSED |
| Saturday | 28 December 2024 | | CLOSED |
| Sunday | 29 December 2024 | | CLOSED |
| Monday | 30 December 2024 | OPEN 8.15AM-5PM | |
| Tuesday | 31 December 2024 | OPEN 8.15AM-2PM | |

1 January 2025 - 5 January 2025 CLOSED. Usual Business Hours from 6 January 2025
NO LATE NIGHTS until Tuesday 11 February 2025
Emergencies: Phone 111 Ambulance or contact EastCare, 260 Botany Rd, Golflands, ph: 277 1516, Healthline 0800 611 116 or our after hours service www.practiceplus.nz (fees will apply)
Beachlands Physio, Labtests & Pohutukawa Pharmacy holiday hours may differ from the medical centre so please check their websites or call them direct.



We wish you all a happy and healthy festive season from the team at Beachlands Medical Centre



Going on Holiday?
Don't forget to order your medication in plenty of time!

To order your repeat prescriptions and get results online please call reception for details and register at managemyhealth.co.nz

129A Beachlands Road, Beachlands PH: 536 6006
POHUTUKAWA COAST SHOPPING CENTRE

Op shop celebrates 18 months of supporting locals

Since it opened 18 months ago, the Twice Loved Op Shop in Maraetai has been committed to helping local children and their families as part of its threefold mission.

Proceeds from the op shop help to subsidise funding for professional educational assessments for children whose parents or caregivers, teachers or doctors have concerns relating to dyslexia, dyscalculia, dysgraphia, ADHD, autism spectrum, numeracy issues or who may need special glasses, hearing aids or

counselling.

“We realise there is a real need in our community as getting assessments done is expensive, and often outside a family’s budget, especially in these difficult economic times,” say Twice Loved mission coordinators Marilyn Welch and Barbara Kilgour. “We have already helped a number of families in the area to find an appropriate pathway that best suits their specific situation and we are happy to hear from anyone who needs assistance.”

The confidential service offers subsidies



The Twice Loved Op Shop on Maraetai Drive has invested proceeds into a number of initiatives, including helping families access professional assessments for children with learning challenges.

to children who are Pōhutukawa Coast residents, or who attend a local educational facility or the Beachlands Medical Centre. To apply for an assessment subsidy for a child, see your doctor or child’s teacher for a referral and contact twicelovedmaraetai@gmail.com.

The op shop also helps families who have met with a crisis and need temporary support such as clothing or household goods etc. Families can also be supported through the Pōhutukawa

Coast Presbyterian Food Bank, which receives regular funding donations from the op shop.

Twice Loved is a collaboration between St Marks Anglican Church and the Pōhutukawa Coast Presbyterian Church. Staffed by volunteers, it runs out of the de-commissioned church building at 104 Maraetai Drive and is open Thursday, Friday and Saturday 10am to 3pm.

SEPTIC TANK & GREASE TRAP CLEANING

Skybridge NZ Ltd T/A SST Services

Ph: 09 294 7611

Or call

Robbie: 0274 967 430
John: 0274 923 669

Septic tank pumping and reporting that complies with new Auckland Council regulations

E: sstseptic tanks@gmail.com

21E Ryan Place
Manukau

N°5
DESIGN STORE

Christmas has arrived at N°5 Design

- Beautiful Homewares from Robert Gordon
- Stunning new Golden Hour High Summer range from Saben
- Favourite Home Fragrances from Circa, Ashley & Co and Becca Project
- A huge variety of Christmas decorations, serviettes, gifts and much more!!

All this, plus complimentary gift wrapping

Open 7 Days in the Whitford Village

Shop @ no5design.co.nz | Phone 09 530 9333

Honouring and Celebrating Life

Our approach, philosophy and high standards are ideals we are proud to uphold. Our compassion, values and dedication when caring for the bereaved are just a few of the qualities that form the heart of Resthaven Funerals.

HOWICK. Cnr Picton & Walter MacDonald Sts | Ph. 533 7493
MANUREWA. 88 Great South Rd | Ph. 267 2530

www.resthavenfunerals.co.nz

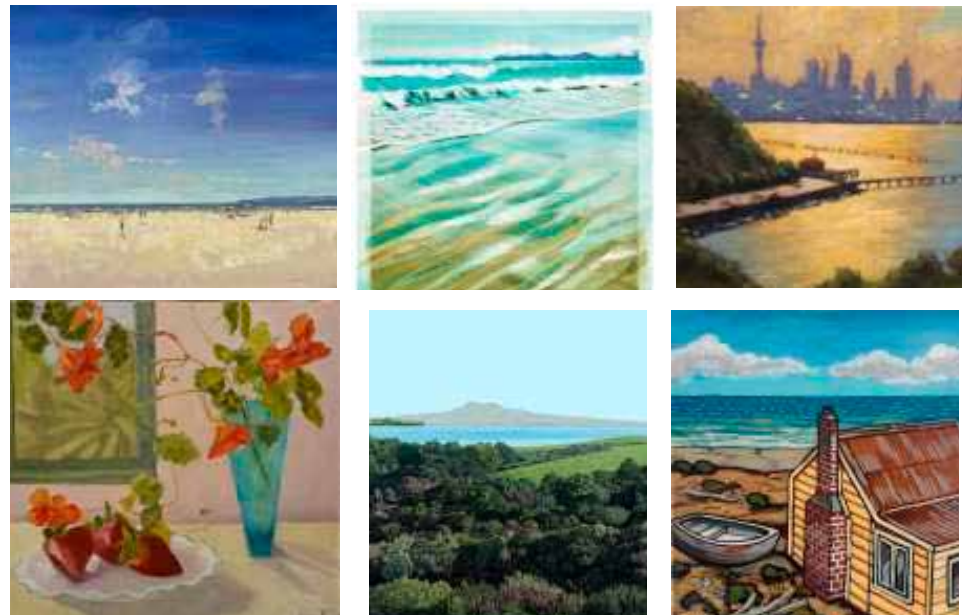
MEMBER Funeral Directors ASSOCIATION OF NZ

QUAY ART GALLERY

PRESENTS
‘Largely Little’
a special selection of
small works

1-24 December

7a Whitford Road, Whitford Village
quaygallery.co.nz



Beachlands firefighter competes at Mr Universe in Las Vegas

Competing at the World Fitness Federation (WFF) Mr Universe competition in Las Vegas was “a day to remember” for Beachlands local and volunteer firefighter Kate Winchester.

Kate travelled as part of the Kiwi contingent, Team WFFNZ, who flexed their muscles at the competition in more ways than one.

“Team WFFNZ was the largest team there and it was fantastic to have some team members skilled in performing the haka, as well as a beautiful Maori welcome by well-known NZ and international judge Naera Jean-Jones,” says Kate.

“Naera opened the show by presenting the Event Organiser and Official for the Las Vegas Universe with a Taonga (gift) which was followed with a karakia and then a mihi mihi welcoming everyone gathered there, wishing peace and respect for each other and what we believe. She introduced our ropu Aotearoa WFF NZ and this was followed by a haka.”

Kate says the WFF Mr Universe competition day was a long day, but the team did Aotearoa proud.

Several team members received placings on the day, and one of the team walked away with a title in his division.

Kate did not place at the competition this time around, but she is happy with her performance.

“My dress was totally out-blinded on the day, but I was rapt with my routine and it was a day to remember for sure!” she says.

Shortly before heading to Las Vegas, Kate placed second in the Glamour category at the WFF Pan Pacific Regionals competition. The Glamour category is a modeling-based fitness event where competitors are judged on their overall presentation, including physique, style and charisma on stage.

Following the USA competition, Kate headed to Wisconsin to indulge her other passion - horses. She spent time with a positive reinforcement horse trainer, based on the banks of the Mississippi River.

“She has 6 incredible mustangs and she had arranged for me to do a photoshoot... in my swimsuit posing with her mustang stallion Santana. Bearing in mind it is winter there I awoke the day of the shoot and it was 6 degrees! I remember thinking this is going to be painful but it HAS to be done!”

Fortunately the sun came out and the photographer captured some memorable moments of Kate with Santana.

“I will treasure this magical reminder of my trip,” says Kate.

Since her return to NZ, Kate has reflected upon her journey.

“I’ve had many insights during this trip that have enabled me to get so much from



Kate Winchester with mustang stallion Santana (above) and with body-building buddy Kim McKenzie in Las Vegas (right).



those two weeks away. I will be sharing these via social media and hope they will inspire others who are pondering or planning or considering plans for 2025!” she says.



RayWhite

AUCTION

46 Beachlands Road, Beachlands

This little piggy went to market... and;

- Found the perfect project!
 - Stayed home... dreaming of crafting their forever haven, with a canvas as big as this property
 - Went to the Domain... because it's just across the road!
 - Had fun... because Beachlands' charm, convenience & community spirit are all within reach
- This little piggy said, 'Hurry, hurry, hurry!' A quarter-acre opportunity like this won't last long.

rwbeachlands.co.nz/BCH31141

Lighthouse Real Estate Ltd Licensed (REAA 2008)

2 1 1 1012

Auction

The Shed @ Ray White Beachlands
4:00 pm 16 December 2024
(Unless Sold Prior)

View

Saturday & Sunday
10:30 - 11:00 am



Brianne Bignell

021 400 979
brianne.bignell@raywhite.com
PREMIER



Paula Kirkman

021 0290 8007
paula.kirkman@raywhite.com

WHY WAIT?

Auckland Council calls on AT to review ferry fares

- by Laura Kvigstad, Auckland Council reporter. Funded by New Zealand on Air

Auckland Council is calling for Auckland Transport to reevaluate after a proposal to significantly increase ferry fares.

At the council's Transport, Resilience and Infrastructure Committee last month, Auckland Transport (AT) presented the proposed 2025 public transport fare increases.

AT's board has approved several measures in the fare reform including reducing fare zones from 14 to nine,

capping the fare table at four zones and removing off-peak discounts.

AT also proposes an increase to ferry fares by \$1.40 for inner, mid and outer ferries.

Monthly passes for each will increase as well with the Waiheke ferry having the largest increase at \$49 for a total of \$419.

AT's Growth and Optimisation group manager Richard Harrison said operating costs for public transport have increased massively and AT is playing catch up following Covid-19.

"The changes we are working through now are really about addressing the

inequity of people who have to travel further particularly as the city expands," Harrison said.

He said the fare structure review was not about increasing revenue.

Deputy Mayor Desley Simpson said the council was driven to get more people on public transport and noted how AT's quarterly report showed public transport boardings were slightly below the target.

"Petrol prices are slowly declining. Have you undertaken economic analysis about the impact of the rising fares on patronage or is the demand for public transport regarded as relatively inelastic?" Simpson asked.

Harrison responded that fares did not have a drastic effect on patronage but was expecting a slight reduction as a result of the change.

"We have had something like an eight million boarding increase in the last year and patronage is continuing to grow," Harrison said.

Councillor John Watson said outer harbour ferries were already expensive and the fare structure change would increase the costs even further.

"We are getting up into some pretty big sums of money for the type of travel we know we don't perform well in," Watson said.

He questioned whether it was fair to compare operating costs of ferries to other modes of transport as ferries don't use

road infrastructure, don't contribute to congestion on the road and were less expensive than the infrastructure required for rail.

AT's Public Transport & Active Modes director Stacey van der Putten said they needed to make ferries more sustainable from a funding perspective.

"Ferry is disadvantaged from a higher running cost perspective therefore the fare, in terms of farebox recovery, is considerably lower in proportion to the other modes," van der Putten said.

"When we actually look at true costs, you [Watson] are right. We have a free highway in terms of the harbour, but - we need to follow what is put out for us by NZTA."

Watson said a member of his community was using nearly 40 percent of his student loan allowance towards ferry fares.

"He is travelling by the ferry. There is no \$50 cap, there is no tertiary concession," Watson said.

He urged AT to look at ways to increase patronage which would positively impact the fare recovery of ferries.

The committee formally requested that the AT board review the proposed fare structure for ferry travel.

CLEVEDON PUMPS & FILTRATION

Servicing Clevedon & surrounding areas for over 10 years

- New Installations and Maintenance of all Pump & Water Filter Brands
- Specialist Bore Pump Repairers & Installations

Contact: Geoff Peck 0274 797 741 | geoff.peck@clevedonpumps.co.nz



Merry Christmas
 From our home
 to yours

All the best for the festive season and have a safe, happy holiday.

BARFOOT & THOMPSON
ESTABLISHED 1938

Lifestyle

SPONSORED CONTENT

Stay cool with HRV

- by HRV East Auckland

Our mission at HRV East Auckland, which has been under new management since 2018, is dedicated to helping the people of East Auckland improve the well being of their homes.

Since then that passion has grown and we continue to make it our goal to transform cold and damp homes, helping make them warmer, drier and more comfortable to live in. With over 500,000

homes in NZ using HRV we are the market leaders in total home solutions.

Condensation? Damp home? Crying windows? Mouldy walls? HRV East Auckland is a total home solutions company providing home ventilation, individual room or whole home heating/cooling options. This one-two punch helps protect your home by first drying out the dampness in your home and then our bespoke heating and cooling solutions

help give you a better quality of life all year round.

No roof cavity? No problem. HRV has a ventilation system to suit your home or minor dwelling.

Currently 1 in 7 children in NZ suffer from asthma, and while we don't claim to hold the cure, our products are endorsed by the Sensitive Choice programme which is dedicated to helping Kiwis breathe pure, clean, fresh air while reducing allergic reactions. Our partnership with Allergy NZ gives you more certainty that our products help reduce the effects of pollen, dust and hay fever triggers in your daily lives at home.

HRV is the winner of Trusted Brand Home Ventilation for 2022, 2023 and 2024.

We are locals, helping locals, and endorsing affiliates such as Pakuranga United Rugby Club, Auckland Cancer Society, Barnardos and I Am Hope Foundation. As part of our ongoing mission we are supporting the next generation to live healthier and longer lives.

Ready to transform your home? Call us direct on 09 356 7547 or visit us at 739 Chapel Road, Dannemora.

Mention you're looking for the "Perfect Deal" to unlock the real deal in Heat Retention and Ventilation with HRV.

NZ's most trusted ventilation 3 YEARS IN A ROW!



hrv.co.nz | michael.chong@hrv.co.nz | 021 400 592



HOLIDAY HOURS

We close on 20 Dec & open 6 Jan 2025



smile dental
Beachlands
We are open!



NEW PATIENTS WELCOME
QUALITY AFFORDABLE FAMILY DENTISTRY

Smile Dental is New Zealand's largest dentist owned dental group with 17 modern innovative clinics in Auckland and Palmerston North.

- | Free Exam* | Free ACC & Social welfare quotation |
- | Free adolescent dental care | White Fillings |
- | Crowns | Veneers | Dental Implants | Invisalign |
- | Wisdom tooth surgery | Botox & dermal Filler |

Address:
129 Beachlands Rd,
Beachlands
Auckland

FREE CHECKUP
AND
WINZ QUOTATION

www.smiledental.co.nz  09 302 0808

| Albany | CBD | Henderson | Avondale | Te Atatu | Ranui | Remuera | Onehunga | Sylvia Park | Mangere | East Tamaki | Somerville | Beachlands | Manukau | Takanini | Papakura | Palmerston North |



94 Picton Street, Howick
Ph: 534 8716


Take advantage of the ZEISS Summer Promotion
Receive a FREE upgrade to ZEISS PhotoFusion X when you order clear ZEISS SmartLife Progressive lenses

Choose your **free upgrade.***



Save Now!

*Terms and conditions apply.

www.howickoptometrists.co.nz
 **Howick Village Optometrists**

FOOD AND ENTERTAINMENT



Bring in this ad to get a FREE Garlic Bread or 1.5L drink with your next pickup order over \$25.

Valid at Domino's Beachlands only and expires 31/12/24



OPENING HOURS
 Tuesday - Thursday: 3-10pm
 Friday - Sunday: 12pm till late

027 208 6942
 190 Jack Lachlan, Pine Harbour

Small sharing plates
 Cocktails
 Marina view




DINING • WEDDINGS • FUNCTIONS
 424 Creightons Rd, Clevedon, Auckland 2582
 PH 09 292 8845 • enquiries@vinalto.co.nz

OPEN: Thur and Fri 5pm - late
 Saturday 12pm - late, Sunday 12pm -4pm



Pōhutukawa Coast's only not-for-profit Chartered Club since 1948

Open 7 days a week
 Mon & Tues 4pm-Late
 Weds-Sun 3pm-Late

2 Weekly Membership Draws
 Fishing and 8 Ball Section
 Fortnightly Quiz Nights
 Free Pool & Darts
 Kids Room
 Gaming Lounge
 Free* Function Hire



(09) 536 4151
 Monday to Friday 10:00am - 11:00pm
 Saturday & Sunday 8:00am - 11:00pm

44 Third View Ave, Beachlands

The best of European Cuisine

JOIN THE CLUB!
 Boating or Community memberships available.
 Bar open from 4pm Thurs-Sun.
 Social events. Function hire.
 www.maraetaiboatclub.org.nz



CAVIAR KITCHEN
 Thurs-Sun from 5pm;
 Sat & Sun from 10am for brunch

Dine over the water at MBBC
 For bookings 021 249 1660

HALLERTAU CLEVEDON

26 CLEVEDON-KAWAKAWA RD, CLEVEDON, AUCKLAND — CLEVEDON@HALLERTAU.CO.NZ — 09 869 2989
 OPEN — MON & TUE: CLOSED — WED & THU: 4PM-10PM — FRI & SAT: 12PM-10PM — SUN: 11AM-9PM



JOHN HILL ESTATE

Open: **Thurs-Sun, 12pm until close**
(09) 292 4929
 johnhillestate.co.nz
 Cnr John Hill & White Roads, Hunua




OPENING HOURS
 Tuesday - Sunday: 5-9pm

For bookings or takeaway: 09 217 1684 | 021 2144790
 44 Kouka Road, Beachlands

@ pinocchionz | Pinocchio Pizza Pasta & more



Pepperjacks

Tuesday - Thursday 9am-8pm | Friday - Sunday 9am-9pm
 Happy hour: 3-6pm, Tuesday-Sunday
 09 536 4659
 manager@pepperjacks.co.nz | pepperjacks.co.nz
 190 Jack Lachlan Drive, Beachlands

TUESDAY: Gold Card Discount
WEDNESDAY: Steak Night \$20

Advertise here to be seen by more than 6,500 households each week!

Contact advertising@potimes.co.nz for details.



THE FRANKLIN
 TAPHOUSE & KITCHEN

Explore a wide range of food options, includes everyday specials to set menu & platters

Open 7 days from 12pm-late
 Woodfired pizzas
 Fri/Sat/Sun 12pm-late

BOOKINGS RECOMMENDED
Ph: 536 5978
 www.thefranklinpub.co.nz

Coastal Cat Rescue 'Cat of the Month'


Albert is making the start to kitten season very special and a lot of fun. This boy is small but packs a whole lot of personality in his little frame. He is adorable. Always up for a cuddle, loves play and makes great conversation.

Albert was heard yelling for help in a busy parking area just out of Clevedon. He was terrified but the next day his cries led us to him and a four-hour marathon to convince Albert to go into the trap so we could transport him to safety.

In a few weeks Albert will be ready to start the next chapter of his life. He would love to meet and get to know his new family, a family that will ensure he is never alone, cold and hungry again. While in our care Albert will be raised with love and the very best of food.

Albert will be vet-checked, neutered, will have had his first vaccination, be microchipped (registered to the new owner), and will be up to date with flea and worm treatments. There is also six weeks free Southern Cross pet insurance available (subject to terms and conditions). An adoption donation applies to help us give our rescue kittens the best chance to enjoy the life they deserve.


If you would like to know more about this character, or enquire about the other adorable kittens we have in care, please email coastalcatrescuenz@gmail.com or join Coastal Cat Rescue (NZ) on Facebook and PM. Please include a little about yourself and the home you can offer a kitten.



CATCH OF THE WEEK PHOTO COMPETITION

Send us your fishing photos this summer and be in to win a \$50 Top Catch voucher from GAS Maraetai each week!

The overall season winner will win a brand new rod and reel sponsored by GAS Maraetai.



After catching a 67cm, 8 kilo snapper just out from Flat Island a week earlier, Ian Scarborough returned to the spot in his boat Wairua and caught a 75cm snapper using the same Shimano rod and reel, again floating line and whole squid for bait. He didn't weigh the fish, and estimated its length from size of the 50cm landing net. Ian released the fish as quickly as possible.

His young Grandson, Jake, was rapt netting the fish and releasing it on Ian's behalf.

TO ENTER, EMAIL YOUR PHOTO TO
 LIZ@GASMARAETAI.CO.NZ
 include your full name, plus details about your catch (where the fish was caught, boat name, special gear used, what you did with the fish after it was caught etc).

BARFOOT THOMPSON & Student Voice

LOCAL STUDENTS' NEWS, VIEWS & LITERARY TALENT

This column features news, views and literary talents of students from Beachlands, Maraetai, Clevedon, Brookby, Hunua, Paparimu, Oere and Ardmore Schools.

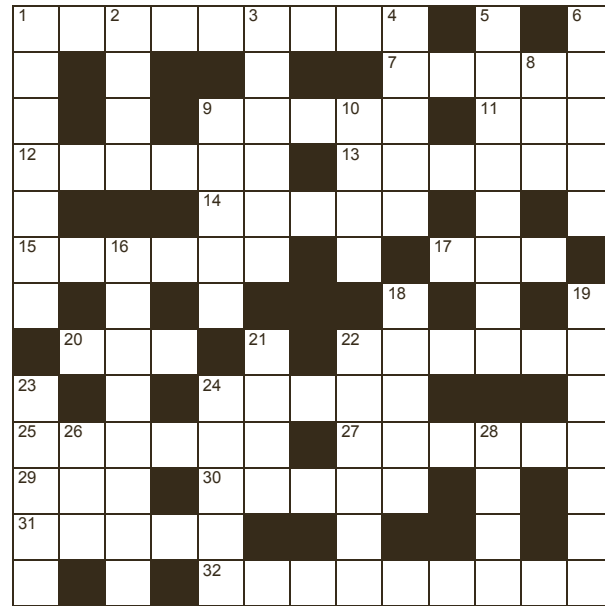
One student featured each week will be presented with a certificate and a \$20 book voucher, thanks to Barfoot & Thompson's Beachlands and Whitford branches.

'Show, don't tell' - Season

I feel the boiling sun beating down on me. I watch as the ocean waves crash like racehorses racing along the white-wash sea foam. I taste my creamy, sweet ice cream as it melts in my mouth. I hear the waves crash as seagulls screech and scavenge for food. I race down to the ocean as my nose inhales the smell of fresh salt water. I look up and am blinded by the glistening sun as it reflects off the water. I dive into the waves and immediately feel the refreshing sensation of cold water. I feel the soft, yet piping-hot sand crumble under my feet. I see sand castles scattered over the beach like little flowers. As the sun shines high in the sky I feel happy and peaceful.

- by Lily Ward, Year 6, Brookby School

RAYWHITE BEACHLANDS CROSSWORD



Brianne Bignell
021 400 979
brianne.bignell@raywhite.com

RayWhite.

Across

1. Take back (9)
7. Gently mock (5)
9. Ground meat (5)
11. Dispirited (3)
12. Endure (6)
13. Row of covered shops (6)
14. Rule (5)
15. Inward shiver of embarrassment (6)
17. Devotee (3)
20. Behind (3)
22. Thick, wet mud (6)
24. Face of a gem (5)
25. Clever (6)
27. Accounts book (6)
29. Transgress (3)
30. Enthusiastic (5)
31. Below average size (5)
32. Extremely poor (9)

Down

1. Search destructively (7)
2. Pant (4)
3. Evening party (Fr) (6)
4. Strict or severe (5)
5. Dreamworld (2-2,4)
6. Precious stone (5)
8. Piece of turf (3)
9. Blend gradually (5)
10. Wire pen (4)
16. Hellish (8)
18. Change (5)
19. Metal band around a join (7)
21. Computer information (4)
22. Pick (6)
23. Unfashionable (Fr) (5)
24. Paddock (5)
26. Faint (3)
28. Influential teacher (4)

Answers on page 10

New touch-free carwash technology

- by #1 Supreme Carwash

We are proud to yet again offer our customers the very latest in automated vehicle wash innovation.

Seven years ago we installed New Zealand's most advanced brush car wash machine - the Supremo Autowashe. To follow up with this highly successful innovation we are now offering the very latest touch free car wash system fresh out of the USA.

The Razor Double Barrel is a game changer in touch free vehicle washing, and is the first of its type in this country.

So, what is new with the Razor Double Barrel? For a start this machine is on steroids compared with its predecessors with a wash time of 7 minutes for our top wash. The blue wash arch that tracks around your vehicle is guided by sensitive laser beams following the exact shape of your car offering more precise coverage with its two-step hot chemical application. The combination of chemistry and hot water far out-performs conventional high pressure car wash machines.

When it comes to the washing cycle, within the arch is a dedicated manifold that delivers water blasting at 1200 psi via 10 turbo nozzles and 5

overhead chisel nozzles. This is how the machine gets its name "Double Barrel".

After these cycles tri colour foam is added and then drying agent and a ceramic sealant agent are applied then followed by a spot free rinse. The final process is a double pass drying cycle via three mega powerful blowers.

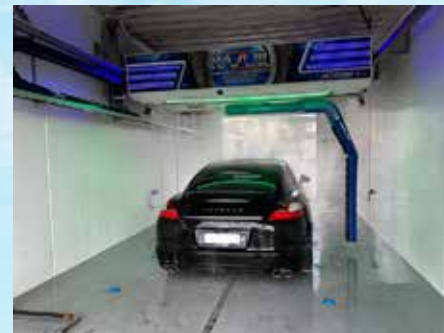
1 Supreme Carwash offer the very best combination in automated car washing on Botany Downs main drag, Ti Rakau Drive. You don't have to go out of your way to experience this, just look for the roadside signs and take a left hand turn onto Amera Place.

In addition to our automated vehicle wash offers, we still offer our immaculate seven self-service bays and seven self-service vacuum stations offering mega powerful suction.

Over the last 24 years we have earned the honour of being one of Botany's "stood the test of time" convenience business.

If you are not one of the hundreds of regular callers at #1 Supreme Carwash, discover car washing made easy by calling in.

Head into #1 SUPREME CARWASH



Latest touch-free wash technology from the USA

- ✓ Advanced two step chemistry
- ✓ Mega powerful turbo jets
- ✓ Triple colour foam and ceramic coating
- ✓ Powerful on board drying system
- ✓ Open 24/7
- ✓ Payment via cash or credit card



347 Ti Rakau Drive,
Botany

#1 SUPREME CARWASH

Opposite Howick &
Eastern Buses and next
to Animates Pet Centre

Council to notify Whitford Manor application

Auckland Council plans to notify a resource consent application, made by the developer of Whitford Manor Estate, to discharge waste water from an on-site waste water treatment plant.

The resource consent application was lodged this year, and Auckland Council then requested further information from the developer.

Council plans to publicly notify the resource consent application on 18 December 2024, giving the public an opportunity to submit their support of or opposition to the application by 7 February 2025.

Classified Ads

BUY/SELL

JEWELLERY WANTED TO BUY

Old gold, rings, broken chains, unwanted jewellery for scrap etc. Paul Taylor Jewellers, Shop C7 Pohutukawa Coast Shopping Center. Ph 536 4200

FOR SALE

IGNITION FIREWOOD

Quality firewood bulk and bagged delivered. Kiln dried, clean, shed stored firewood. Order online at www.ignitionfirewood.co.nz. Logs and trees wanted.

WORK WANTED

HANDYMAN

You name it... renovations, gardening, retaining, fencing, landscaping, trellis, light building and maintenance work. Ph Gary on 021 903 020 or 536 6358.

READY GRASS/ LANDSCAPING

Specialising in ready-grass, seeding, lawn levelling, turf cutting & landscaping. Locally based Ph: Adam on 022 015 2805.

MOWER AND CHAINSAW REPAIRS

All small engine repairs, mowers ride-on mowers, chainsaws, weedtrimmers, & chain saw sharpening. No job too small. Free pick-up local area only. Ph: 536 5621 or mob 027 308 7777.

RENOVATIONS

Bathrooms, kitchens, toilets - build, tile, glass, flooring, plaster and paint. Start to finish. Exp. builder. Refs avail. Ph: Gary 021 903 020 or 536-6358. Oakes Build Landscape Maintenance. www.oakes.nz.

PAINTING/PLASTERING

Interior and exterior quality plastering and painting. Ph: Gary 021 903 020 or 536 6358.

ROSIE'S GARDENING SERVICES

Weeding, light pruning, weed spraying, over 27 years experience. Ph Rosie: 021 0233 5998

BOATING & MARINE



PROUD DEALERS OF **YANMAR**

UNIT 1C, 190 JACK LACHLAN DRIVE, PINE HARBOUR MARINA
ALLISTER: 022 042 9349 | ALLISTER@MDSL.NET.NZ

Ovlov Marine Pine Harbour

09 536 5249
www.ovlov.co.nz

Sales and Service of outboard motors, inboards, sterndrives and IPS.

Situated in Pine Harbour Marina and mobile we can care for your vessel be it big or small.

Contact the team on 536 5249 or email on joe@ovlov.co.nz for service enquiries and partsp@ovlov.co.nz for spare parts.



CROSSWORD ANSWERS

Across: 1. Repossess, 7. Tease, 9. Mince, 11. Low, 12. Suffer, 13. Arcade, 14. Reign, 15. Cringe, 17. Fan, 20. Aft, 22. Sludge, 24. Facet, 25. Adroit, 27. Ledger, 29. Sin, 30. Eager, 31. Small, 32. Destitute. **Down:** 1. Ransack, 2. Puff, 3. Soirée, 4. Stern, 5. La-la land, 6. Jewel, 8. Sod, 9. Merge, 10. Cage, 16. Infernal, 18. Alter, 19. Ferrule, 21. Data, 22. Select, 23. Passé, 24. Field, 26. Dim, 28. Guru.

Professionals & Trades

BUILDERS

GH Building

YOUR LOCAL BUILDER

Specialists in architectural new builds and vast residential renovations

Logan Felts 021 564 263



logan@ghbuilding.kiwi.nz

ghbuilding.kiwi.nz



- NEW BUILD
- RENOVATIONS
- DECKS
- BATHROOMS

FOR ALL YOUR BUILDING NEEDS

Call Justin on:
021 460 011

justin@innovateconstruction.co.nz

Licensed Building Practitioner

www.innovateconstruction.co.nz

PRODECK LTD

FREE CONCEPT DESIGN & QUOTE

- Decks
- Retaining Walls
- Custom Sheds
- Extensions
- Fences
- Pergolas
- Permits Arranged
- Alterations

PHONE PHIL 021 1647 428

CHIROPRACTOR



- Headaches / Migraine • Dizziness / Vertigo • Neck pain / Whiplash • Trapped nerves • Back pain / Sciatica
- Plantar fasciitis • Sports Injuries / Performance & more...

David Owen DC | Registered Chiropractor

ACC Registered, 25 years experience

02102 144 070 | clevendonchiro@gmail.com | www.clevendonchio.co.nz

DENTAL

WHITFORD DENTAL

We are dedicated to your personal well-being through dental health



- Teeth whitening

- All ceramic tooth filling materials using CerecAC omnicam, 3D technology
- Permanent tooth replacements with dental implants
- For gum health and maintenance call our hygienist Zahraa
- All aspects of general dentistry

FREE DENTISTRY IS AVAILABLE FOR ALL YOUNG ADULTS
Eligible from Year 9 until their 18th birthday. Contact us today to learn more
Evening appointments available
Call us now on 530 8461 or email: info@whitforddental.co.nz

Dentists:

• Dr. Rick Parfitt B.D.S. • Dr. Alex Lindsay B.D.S.
• Dr. Maad Youhanna B.D.S.

Hygienist:

• Zahraa Talib B.O.H

09 530 8461
Whitford Village, Whitford

DENTAL



INTEREST-FREE DENTAL
PAYMENT PLANS

Book online:
www.marinadentists.co.nz

190 Jack Lachlan Drive, Beachlands
Call us: 09 535 1074



giving you one more reason to smile

QUALITY AFFORDABLE
FAMILY DENTISTRY

*FREE dental
examinations

*excl. xrays



129 Beachlands Rd, Beachlands, Auckland

www.smiledental.co.nz 09 302 0808

Great Smiles. Better Health.

At Anthony Hunt Dental we are proud to have been serving our community since 2011.

Leading the way using the latest techniques and technology, we create great smiles and better health for the whole family.



(09) 292 9071 smile@ahdental.co.nz
52 Papakura-Clevedon Road
Clevedon
www.ahdental.co.nz

ANTHONY HUNT
Dental
GREAT SMILES • BETTER HEALTH

DRAINAGE & EARTHWORKS



Drainage Vision Limited

www.drainagevision.co.nz

Mike 027 593 0326

- Drain Unblocking • CCTV Inspections • Certified Drainlayer
- Vacuum Trucks • Pipe & Cable Locations

ELECTRICIANS



No job too small - No job too big!

Fast, reliable service.
Qualified lighting designer

PH: 536-4076

FREE Quotes

MOB: 021 769 964

www.pohutukawaelectrical.co.nz



AUCKLAND ELECTRICAL & PUMPS

- All Electrical Services and Water Pump Repairs
- Water Pump & Bore Pump Repairs & Installation
- Residential, Rural & Commercial Services
- New House Wiring/Rewiring & Renovations
- Filter & UV Light Replacement

PHONE: 0274741579 | 09 536 4074
admin@aeps.co.nz

Professionals & Trades

HANDYMAN SERVICES



MECHANICAL REPAIRS

MARTY'S SMALL MOTOR MECHANICAL SERVICES

For all your servicing and mechanical repairs
FARM QUADS | 2 WHEELERS | RIDE ON MOWERS
 Pick up and drop off if required

Marty: 021 0233 0277, marty63@xtra.co.nz

TREE SERVICES



Your Local Arborists
 Your problem is our specialty!

- Tree Care, fine pruning and removals
- Shelterbelt removals and chipping
- Palm cleaning and hedge trimming
- Hedge trimming
- Tree Light installations
- Small Hiab Lift and Shifts

CALL PHIL FOR A FREE QUOTE
 022 607 4455

CHECK OUT
jessepcontracting.co.nz

LAWNS & LANDSCAPING

R & R Garden Services
 - We do the hard yards for you -
 Email: randrgardenservice@gmail.com

Your local lawn and garden specialist
 Call Richie: 021917332

Qualified Landscape design and Implementation
 Call Roanne: 0272528183

PLUMBING & GAS FITTING

DYNAMO PLUMBING
 MAINTENANCE SPECIALIST
 24 hours/7 days A WEEK • NZ CERTIFIED PLUMBER
 LOCALLY OWNED & OPERATED
0800 175 988
office@dynamoplumbing.co.nz

TYRES

TYREGUARD
 PROTECTING YOUR JOURNEY

YOUR TRUE TYRE PROFESSIONAL ON THE COAST

- Friendly Reliable Service
- Locally Owned & Operated
- Over 20 Years Experience
- For ALL Your Tyre Needs

Agricultural, Batteries, Car / Passenger, Earthmover, Mag & Tyre Packages, Puncture Repairs, Truck / Commercial, Wheel Balancing, 4WD / Off Road, 24/7 After-Hours Callout

Call Mike 021 901 034 | sales@tyreguard.co.nz | www.tyreguard.co.nz



- LANDSCAPE DESIGN
- SWIMMING POOL
- OUTDOOR KITCHEN
- PERGOLA AND DECKS
- LAWN AND GRASS
- FENCE AND GATES

PH: 0800 500 889

ROOFING

ROOFING & SPOUTING NZ LTD
 Delivering Quality & Durability

RE-ROOFING | NEW ROOFS | ROOF COATINGS
 CONCRETE ROOF TILE SPECIALIST | CONCRETE TILE REPAIRS
 GUTTER REPLACEMENT | INTERNAL GUTTER CONVERSION

0800 766 350 | www.roofingnz.co.nz | info@roofingnz.co.nz

VETERINARY

Franklin Vets Beachlands

1/43 Kouka Road,
 Pohutukawa Coast Shopping Centre
 538 0010 | beachlands@fvs.co.nz

Mon-Fri 8am-6pm
 Sat 9am-3pm

www.franklinvets.co.nz

Come meet our local team and tour our Best Practice & Cat Friendly accredited facility

MEAT SUPPLIER

For all your homekill and hunting processing.
 Vacuum packing standard & delivery available.
 Qualified butchers, expert advice, friendly service.
 Sausages (gluten free available), bacon, salami, biersticks, biltong, smoking and curing.

027 632 8979
admin@meatworx.co.nz
www.meatworx.co.nz

SCAFFOLDING

QUALITY | RELIABLE | WHITFORD BASED | LAYHER SCAFFOLD SYSTEM

DTS WRIGHT
 SCAFFOLDING

Contact Dylan 021 239 4276 | dtswrightscaffolding@gmail.com

SURVEYOR

SURVEY PLUS
 LAND SURVEYING

Your local Pohutukawa Coast Surveyor

admin@surveyplus.co.nz | 020 4 SURVEY (020 4 787839)

POHUTUKAWA COAST VETS

LOCALLY OWNED & OPERATED IN BEACHLANDS

Book an appointment
Ph: 09 320 1472
 Or book online
www.pcvets.co.nz

reception@pcvets.co.nz | 43 Wakelin Rd, Beachlands

MECHANICAL REPAIRS

MARAETAI AUTOMOTIVE

All Makes & Models | All Types of Repairs
 Petrol - Diesel - European Vehicles - Loan Cars
 • Servicing • WOF • Brakes • Clutches • Wheel Alignments
 • Tyres • Transmission Services • Batteries • Welding
 • Cambelts • CV Joints • Auto Electrical Repairs

131 Maraetai Drive, Maraetai
 Ph: 536 6542

ALL WORK GUARANTEED
 HOURS: Mon - Fri: 8am-5pm

WATER

Coastal
 PUREWATER LTD

The highest quality water for all your household, property and commercial needs

Ask for our pure water by name

Manukau Quarries LP
 885 Whitford-Maraetai Road, Beachlands | 09 2630220

TREE SERVICES

CALL NATHAN 021 196 6509

COASTAL CUTTERS
 TREE CARE ON THE COAST

- CHIPPING
- LAND CLEARING
- HEDGE TRIMMING
- TREE PRUNING
- TREE REMOVAL
- STUMP GRINDING

FIND US ON FACEBOOK coastalcutters@hotmail.com



AA APPROVED REPAIRER,
 AA BATTERY STOCKIST
 MTA ASSURED

WE ARE YOUR LOCAL, HONEST AND TRUSTED AUTOMOTIVE REPAIRER. POP DOWN AND SEE US. WE'LL LOOK AFTER YOU AND YOUR VEHICLE.

- ALL MECHANICAL REPAIRS
- WOF
- BRAKES
- TYRES
- AUTOMOTIVE AIRCON SERVICING

57 THIRD VIEW AVENUE, BEACHLANDS
 09 536 6664

DS TREES LTD

Land Clearing
 Tree Maintenance
 Tree removal
 Stump Grinding
 Hedge Care

Phone Doug
 021537171 • 09 5378595
info@dstrees.co.nz
www.dstrees.co.nz

FRANKLIN WATER
 MAKING WATER WORK

Ph 0800 826 525
sales@franklinwater.co.nz
www.franklinwater.co.nz

Supply, Installation & Servicing of:

- Water Pumps, Filter Systems & UV Light Systems
- Tank Cleaning
- Replacement Filters
- Loan Pumps available on ALL House Pump Servicing & Repairs

Bores / Pumps / Tank Cleaning / Filtration Systems
 Solar Pump Supply & Installation

