

17 May 2024

Piecing it together: community event blends art, fun and puzzles



Samantha Sutherland's winning textile artwork (above) was transformed into a jigsaw used in a speed-puzzling event.

The Beachlands School Hall buzzed with excitement on 27 April as participants gathered for the first Pōhutukawa Coast Art and Jigsaw Puzzle Competition. Art lovers, puzzle enthusiasts, friends and families came together for a day of creativity and friendly competition.

The day began with an art competition highlighting the beauty of the Pōhutukawa Coast. Talented local artists showcased breathtaking paintings, fabric designs and captivating photographs, with the winning designs then turned into jigsaw puzzles for the event's second round - team and individual speed jigsaw races which revealed the winning artworks.

Pōhutukawa Coast Art and Jigsaw Puzzle Competition organiser Adele Bryson says the dual focus of the event provided a unique way for artists to see their creations come

to life in a whole new format.

"We're delighted with how the community embraced the event," says Adele. "We're over the moon to see everyone coming together to celebrate art and creativity. These events not only showcase talent but also bring us closer as a community."

Winner of the Individual Art Category was Samantha Sutherland with her textile piece 'Lara at Sunkist'.

Rhianon Philpott won with her team's puzzle 'The Joy in Joining our Community', a special piece which portrays scenes familiar to all locals.

Highly commended went to nine-year-old Tessa Bryson

CONTINUED ON PAGE 4

LICENSED TO SELL

Ian 027 285 9314
Jenny 0204 000 2564
Nicolette 027 702 9157
Mark 027 523 2245

#1 Top Salesperson
Beachlands Branch 2024

BARFOOT & THOMPSON

SPECIAL AGENTS
003

We're here for **you**
and all your property
management needs!

BARFOOT & THOMPSON
PROPERTY MANAGEMENT

Beachlands
09 536 4990

RayWhite.
BEACHLANDS

Your Premium **Choice**
in Property Management

Ray White Beachlands

Lighthouse Real Estate Limited
Licensed (REAA 2008)

P : (09) 536 7011
E : beachlands.nz@raywhite.com
W : rwbeachlands.co.nz
A : 81 Second View Avenue, Beachlands



Visit us
226 North Road,
Clevedon 2248
Ph: 09 292 8656

Email: office@mortontimber.co.nz
Web: www.mortontimber.co.nz
Facebook: mortontimber.clevedon

You'd be **QUACKERS** in May
to miss these **DEALS**

90X45 H3.2 KILN DRY SG8 4.2M
\$5.00 PER L/M plus gst

90X45 H3.2 KILN DRY SG8 5.4M
\$6.00 PER L/M plus gst

PLYWOOD 19MM DD GRADE H3.2
2400x1200 \$85.00 plus gst per sheet



OPENING HOURS

MONDAY - THURSDAY 7:30AM TO 5:00PM
FRIDAY 7:30AM TO 4:30PM & SATURDAY 7:30AM TO NOON

INSIDE: Iwi apply for extended protection of Gulf p3

Clevedon couple embark on spiritual odyssey p5

RayWhite.
Second Generation Real Estate
EXPERIENCE the difference...
Ray White Beachlands
Lighthouse Real Estate Limited
Licensed (REAA 2008)
P : (09) 536 7011 or (021) 400 979
E : beachlands.nz@raywhite.com
W : rwbeachlands.co.nz
A : 81 Second View Avenue, Beachlands

EmbroidMe.
East Tamaki
We Supply & Brand
Uniforms & Promotional Products
Embroidery, Printing, Lettering, Dye Sublimation and more...
Cnr Smales and Springs Rds, East Tamaki - 09 265 0300

**Great Smiles.
Better Health.**
Offering a caring, professional
service for the whole family
including general, restorative and
cosmetic dentistry.
(09) 292 907 | smile@ahdental.co.nz
52 Papakura-Clevedon Road
www.ahdental.co.nz
ANTHONY HUNT
Dental
GREAT SMILES • BETTER HEALTH

Deadlines: Display advertising - 5pm Thursday. Classified and News - midday Friday

advertising@pctimes.co.nz | www.pctimes.co.nz

Pohutukawa Coast Times

GET IN TOUCH

E: info@pctimes.co.nz
W: www.pctimes.co.nz
F: facebook.com/pctimes
A: PO Box 5, Beachlands 2147

EDITOR

Leanne Chamberlin
 021 426 207
 leanne@pctimes.co.nz

ADVERTISING

Melody Cutfield
 021 0261 4467
 advertising@pctimes.co.nz

CLASSIFIEDS

advertising@pctimes.co.nz

DELIVERY/DISTRIBUTION

distribution@pctimes.co.nz

ACCOUNTS

Pam Rutherford
 accounts@pctimes.co.nz

The Pohutukawa Coast Times is distributed weekly to 6500 homes and businesses in: Whitford, Brookby, Beachlands, Maraetai, Clevedon, Ardmore, Alfriston, Kawakawa Bay, Orere Pt, Hunua, Paparimu

Member of the New Zealand Community Newspapers Association



The PC Times 20 years ago:
 14 May 2004: Whitford bypass part of new road strategy.



PINE HARBOUR ELECTRICAL

Weekly Tide Chart

Day	Moon	Low	High	Direction
17 Fri	☉	2:20am ▲ 2.9m	8:34am ▼ 1.1m	→
18 Sat	☉	3:12am ▲ 2.9m	9:25am ▼ 1.1m	→
19 Sun	☉	4:02am ▲ 2.9m	10:15am ▼ 1.1m	→
20 Mon	☉	4:49am ▲ 2.9m	11:01am ▼ 1.0m	→
21 Tue	☉	5:34am ▲ 2.9m	11:45am ▼ 1.0m	→
22 Wed	☉	12:06am ▼ 1.0m	6:17am ▲ 2.9m	→
23 Thu	☉	12:47am ▼ 1.0m	7:00am ▲ 3.0m	→

MARINE FORCAST – VHF CHANNEL 19
 AUCKLAND FORCAST – 0900 999+ YOUR STD

Pine Harbour Electrical
 Unit 1A Pine Harbour Marina
 P: 536-6177
 W: www.phe.co.nz

Guest editorial by Sir Robert Jones

The daily newspaper is doomed.

Over the last 30 years world-wide, they've gone over like nine-pins, thanks to the immediacy of Google and cell-phones. Those still hanging on are frantically trying to transfer their readership to online via pay-walls.

In Britain a rich variety of newspapers still survive, albeit with drastically reduced circulations. But there are constant reports of staff reductions, the latest from the Guardian a fortnight back.

Go back before the cell-phone assault and every New Zealand town and city

had a morning and evening newspaper.

The former usually had the largest circulation as it could produce all the previous day's news events. But if something big happened after say 11pm, it could not bring that to its readers until another day and a half had elapsed. Today, the public will learn about it within minutes on their computer, cell-phone or other device.

If anything tells the story it was the sale a few years back of our largest newspaper chain by its Australian owners to Stuff, for the token sum of \$1.

If they'd sold it 25 years earlier it would have fetched many billions. So why a single dollar? That was solely to avoid the inevitable mass redundancy bills, they recognising these being inevitable.

Like many things, reading physical newspapers is a habit not easily dropped, thus readership is now confined to older generations, this borne out by their display advertising largely confined to foreign travel, cruise ships et al, and retirement villages. But today these produce revenue a tenth of yesteryear, given the low and falling newspapers circulation, falling off course because this age group are steadfastly dying off.

The one newspaper category which may survive is the weekly freebie delivered to every household.*

A single reporter can provide local news too insignificant for alternative electronic news outlets.

As a life-long newspaper devotee, I take no pleasure in this state of affairs. My libraries include numerous bound volumes of Australian, New Zealand and British newspapers going back to the 1850s and I love poring over them. Sadly, however I accept they're now historic relics of a different age.

Sir Robert Jones

[* Editor's note: Such as the PC Times, which is still going strong!]

Countdown begins for Council house demo

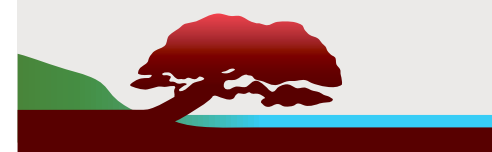


At its most recent meeting on 23 April 2024, Franklin Local Board approved the removal of the residential house, garage and associated assets at 6 North Road, Clevedon.

The area will be reinstated as lawn until funding becomes available to redevelop the land.

The views expressed in the Pohutukawa Coast Times Guest Editorial column are not necessarily the views of the editor or publisher.

Read online
 www.pctimes.co.nz





SUTCLIFFE MATSON
LAW

LAWYERS SERVING THE POHUTUKAWA COAST

38A Wakelin Road, Beachlands
 Available Monday - Friday, by appointment

Conveyancing, Refinancing, Wills,
 Powers of Attorney, Business Transactions
 Family & Commercial Law
 and other general legal needs.

We are happy to meet after hours
 at your home for your convenience.

Ph: 09 279 8351 or Braden: 021 327 030
 braden@smlaw.net.nz | breanna@smlaw.net.nz
 www.sutcliffematsonlaw.net.nz

photo credit: Tio&Co Photography

BREANNA FULLER AND **BRADEN MATSON**
BCOM/LLB (HONS) | ASSOCIATE MA/LLB | DIRECTOR



St Hilda's and St. Mark's
Anglican Church
 3 Wakelin Rd, Beachlands

SERVICE
 Sunday 9:30am

All Welcome



PRIMA
 COLLISION REPAIRS

Complete panelbeating and car painting

East Tamaki: Unit B 154 Harris Rd, East Tamaki, Auckland 09 274 4778
 Manukau: 2/117 Kerrs Rd, Manukau, Auckland 09 268 9340

Local iwi apply for extended protection of Tikapa Moana

Local iwi Ngāi Tai ki Tāmaki is once again proactively seeking greater protection for Tikapa Moana/the Hauraki Gulf.

Ngāi Tai is one of five iwi asking for an existing rāhui/protection ban to be extended, in order to better protect three marine areas within the Gulf.

A number of rāhui have been in place over the past decade, including a ban on collecting cockles at Umupuia - a move which has led to a partial recovery of shellfish stocks and other marine life in the area. The rāhui have attracted support from key organisations including the Hauraki Gulf Forum, Revive our Gulf Project and the University of Waikato.

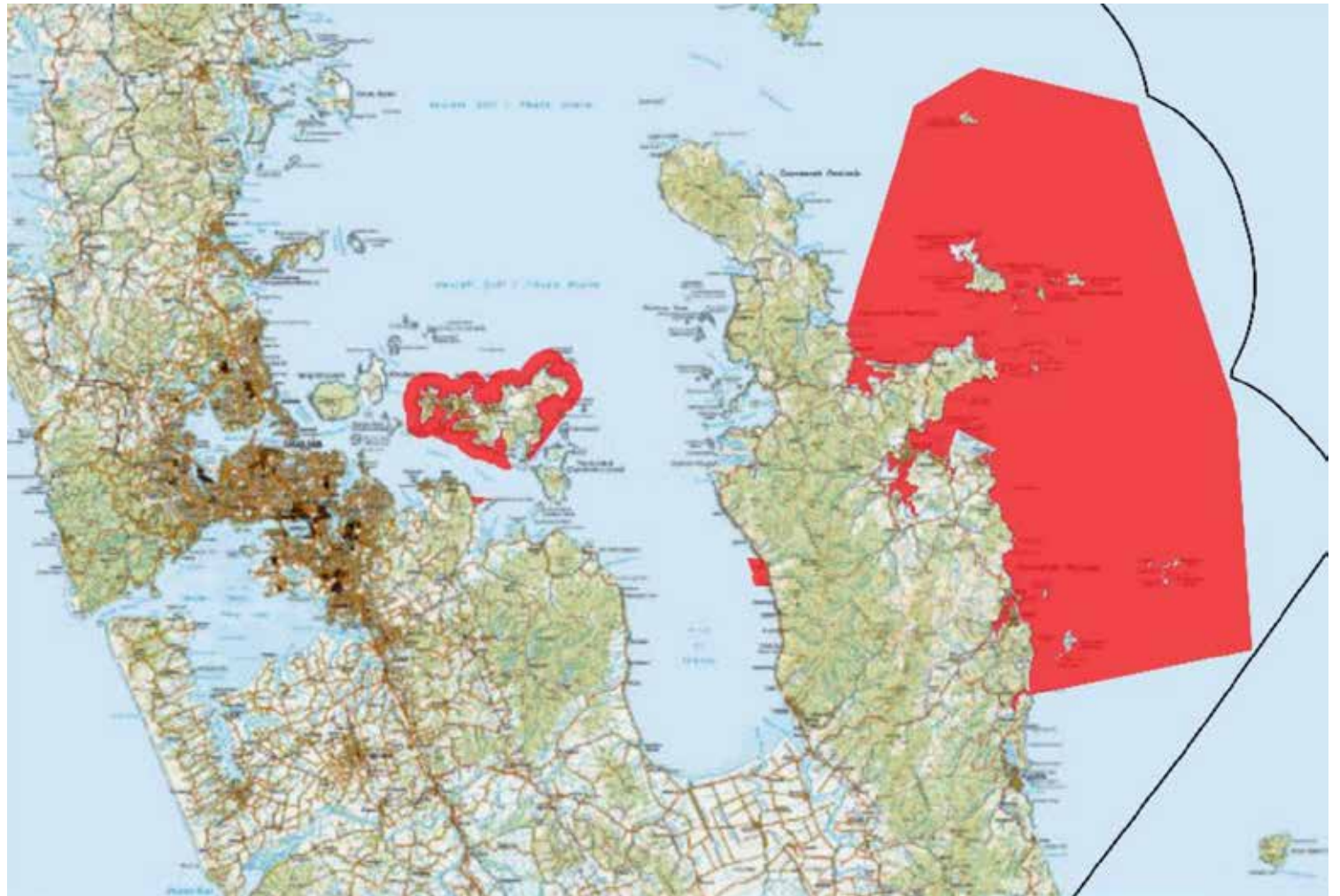
The five iwi have now applied to MPI seeking extension of the rāhui for a further six years, preventing the removal of some shellfish and lobsters within the Gulf.

Together the five iwi have established the Pou Rāhui Research Project, an initiative which combines mātauranga Māori (Māori knowledge) with modern scientific tools, with the goal of restoring the health of a number of threatened taonga species.

The first-of-its-kind rāhui project brings together an all-Māori research team of mātauranga Māori experts with kaupapa Māori scientists, academics, iwi practitioners, environmentalists and taiohi (youth). The intergenerational project is a co-production across iwi experiencing similar catastrophic impacts in the moana to embark on innovative, mātauranga Māori/science based solutions and actions to assist the regeneration and restoration of rohe moana.

Iwi hope that the rāhui project will result in practical, positive, and measurable improvements to the health and wellbeing of Tikapa Moana, particularly in places and areas within the Gulf in which rāhui are implemented.

The research will also investigate rāhui as a tool of environmental management and develop an ecological monitoring system to be implemented by iwi which is scientifically robust, is informed by mātauranga Māori and coordinates well with environmental monitoring



Map showing areas of Tikapa Moana which iwi would like to see protected for a greater length of time.

undertaken by other parties.

The proposed closures cover:

- Umupuia Beach (prohibiting the taking of tuangi/cockles)
- Waiheke Island (prohibiting the taking of kūta/mussels, kōura/rock lobster, pāua, and beach cast tipa/scallops. The taking of other scallops is already prohibited.)
- Coromandel/Te Mātā and Waipatukahu (prohibiting the taking of tio/oysters, kūtai/mussels, pipi, and tuangi/cockles.)

The application was lodged with the Ministry for Primary Industries (MPI) which is now inviting feedback on the proposals.

Submissions can be made online until 5pm on June 7.

SEPTIC TANK & GREASE TRAP CLEANING

Skybridge NZ Ltd T/A SST Services

Ph: 09 294 7611

Or call

Robbie: 0274 967 430

John: 0274 923 669

Septic tank pumping and reporting that complies with new Auckland Council regulations

E: sstseptic tanks@gmail.com

21E Ryan Place

Manukau

Pohutukawa Coast
PRESBYTERIAN CHURCH
"A Voice of Positive Christianity"

You move towards your dominant thoughts!
Think well.
- Mark -

Every Sunday 9am
Plus Kids' Programme
Minister: Mark Chapman

For more information contact Lyn:
lyn.41buchanan@gmail.com

Playgroup Tues & Wed 9am - 12pm

Food bank 027 304 4998 Phone or text

5 Jacobs Way, Maraetai

Howick FUNERAL HOME

New Zealand owned & operated since 1993

Robert Johnstone & Kevin Kelleher

A privilege to care for your family

Every life is special, we understand that. Let us pay tribute to the life of your loved one and celebrate the unique way they have touched you, your family and those around you.

For a personal, professional service contact us today to discuss your options:
35 Wellington St, Howick | Phone 534 7300 | www.howickfuneralhome.nz

OUR LADY STAR OF THE SEA CATHOLIC PARISH

We celebrate Mass at 4.30pm on the first Saturday of the month. On other Saturdays there will be Celebration of the Word with Holy Communion.

St Hilda's Church,
3 Wakelin Road, Beachlands

Visit our website for details
www.beachlandsc.com

Piecing it together: community event blends art, fun and puzzles

CONTINUED FROM PAGE 1

for her painting of Beachlands' famous feline 'Fairlane', and the well-deserved People's Choice went to Karyn Fisher for her work titled 'Who We Are'.

The day wrapped up with competitions, spot prizes, raffles and a prize-giving ceremony.

"It's clear that the Pōhutukawa Coast Art and Jigsaw Puzzle Competition


is in demand as an annual highlight," says Adele. "Here's to celebrating the unique artistic talents of our beautiful Pōhutukawa Coast!"

The event was sponsored by the Franklin Community Arts Council, the Takutai Trust, and Ray White Beachlands.

For information on more events like this, call into the Puzzle Library at Beachlands Log Cabin. See The Log Cabin Facebook page for dates and times or to message Adele Bryson.



Community members puzzle it out.



PH: 530 8872
Whitford Village
www.malmakswater.com.co.nz

WE ARE NOW AN AUTHORISED DEALERSHIP FOR

DAB & GRUNDFOS

REPAIRS & MAINTENANCE ON ALL PUMP BRANDS

STOCK AND SELL

- Pumps • UV Lamps
- All in one pump box
- Carbon & Sediment Filters
- Salt • Bore Softeners

• DAB • GRUNDFOS • GREENWAY • VIQUA
• ATLAS FILTRI • ALPINE PURE • STERILIGHT
• PURETEC • DAVEY • HANSEN

SERVICING POHUTUKAWA COAST FOR OVER 10 YEARS

BARFOOT THOMPSON & Student Voice

LOCAL STUDENTS' NEWS, VIEWS & LITERARY TALENT

This column features news, views and literary talents of students from Beachlands, Maraetai, Clevedon, Brookby, Hunua, Paparimu, Oreo and Ardmore Schools.

One student featured each week will be presented with a certificate and a \$20 book voucher, thanks to Barfoot & Thompson's Beachlands and Whitford branches.

Each year on ANZAC day we celebrate the Gallipoli landing that happened on 25 April 1915. That day thousands of young men lost their lives, charging the beaches in Turkey.

The British and French forces made the landing at Cape Helles with the Australian and New Zealand Army Corps (known as the Anzacs). New Zealand troops were part of the New Zealand and Australian division under major-general Sir Alexander Godley.

In the heat of The Ottoman and Turkish defence there was no sign that allied advances were possible. The fight quickly turned into trench warfare with the Anzacs trying to hold the Axis defence off. The troops couldn't stand the heat, flies and the smell of dead bodies.

An attempt to break through in August failed, but not without a good effort by the New Zealand forces. They for a little while had captured the high ground before Turkish and Ottoman forces.

In the end the allies cut their losses and evacuated from Gallipoli by January 1916. At least 130,000 men had died during the battle, and about 87,000 Ottoman soldiers and 44,000 allied soldiers. 8700 Australians died and 2779 New Zealanders died. Lest we forget.

What do I do to celebrate Anzac Day? At dawn around 5am every year my parents wake me up and we go to the parade held in Papakura to mark Anzac Day. I also make poppies to put around the house.

- by Seth Cole, Year 6, Ardmore School



QUAY

'unearthed'

a group exhibition

24.05.24 – 09.06.24

bring to light – dig up – uncover – discover – determine - learn

7A Whitford Wharf Road, Whitford Village
quaygallery.co.nz

Image – Mollie Schollum Ceramics

Nature puts on a celestial skyshow for the Coast



These images were taken just after 6pm in Brookby. Aurora Australis, also called the Southern Lights, occurs when charged particles from the sun interact with the Earth's magnetic field, creating a dance of colours across the southern horizon. The Pōhutukawa

Coast was treated to a spectacular show last Saturday night between 6-9pm, when a palette of greens, purples, pinks, and blues was picked up easily by anyone with a smartphone camera.



Shining Some Light

Jesus was crucified and resurrected so that we could receive his gift of eternal life.
It is not a myth; it is the truth based on facts and the testimony of billions alive today.
He loves you and wants you to know him and enjoy an awesome relationship with him.

DON'T MISS OUT 😊 CHECK HIM OUT



Honouring and Celebrating Life

Our approach, philosophy and high standards are ideals we are proud to uphold. Our compassion, values and dedication when caring for the bereaved are just a few of the qualities that form the heart of Resthaven Funerals.



HOWICK. Cnr Picton & Walter MacDonald Sts | Ph. 533 7493
MANUREWA. 88 Great South Rd | Ph. 267 2530

www.resthavenfunerals.co.nz

MEMBER Funeral Directors ASSOCIATION OF NZ

CLEVEDON PUMPS & FILTRATION

Servicing Clevedon & surrounding areas for over 10 years

- New Installations and Maintenance of all Pump & Water Filter Brands
- Specialist Bore Pump Repairers & Installations

Contact: Geoff Peck 0274 797 741 | geoff.peck@clevedonpumps.co.nz

SPORTS

Beachlands Maraetai Football Club



RESULTS FROM 11 & 12 MAY

Black U9 played Metro FC Man City U9 POD Daniel Slabber
Blue U9 played Ellerslie AFC Gold U9 POD Ryker McCallister-Lee
White U9 played Onehunga Sports FC Geckos U9 POD Nathaniel Naidu
Blue U10 played Auckland United FC Rangers U10 POD Julian Stretton
Black U10 played Onehunga Sports FC Titans U10 POD Trenton Balemi
White U10 played Metro FC Onemana U10 no POD submitted
Blue U10G played Auckland United FC Swallows U10G POD Devon
Blue U11 played Eastern Suburbs AFC Black U11 POD Finn
White U11 played Western Springs AFC Stott U11 POD Hudson Jenks
Blue U12 played Onehunga Sports FC Jets U12 POD Ben Clark
Black U12 played Fencibles United AFC Hedgehogs U12 POD Mitchell
Blue U13 lost to Fencibles United Navy U13/5 3-4 POD Ian MacKechnie
U14G BYE
Blue U15 lost to Pukekohe AFC Blue Knights U15 0-1 POD Nathan Ramsey
Rebels U15G beat Papakura City FC Tui U15G 5-2 POD Jess
Atletico Beach lost to Mangere United Sharks 6-1 POD Todd Carruthers
1sts v West Auckland AFC no result submitted
Legionnaires M40/3 drew with Bay Olympic Clowns 3-3 POD Irish
Rebels M40/4 lost to Bucklands Beach Saints M40/5 1-5 POD Mark Bignell
Coasters M40/4 v Western Springs AFC Goldenballs M40 3-0 default win to BMAFC
Lions M45 lost to Western Springs AFC Reefers M45/3 2-6 POD Simon Murray

Beachlands Maraetai Junior Rugby



RESULTS FROM 11 MAY

POD - Player of the Day
 ROD - Ripper of the Day
 TOD - Tackler of the Day

U15 Fast Ferns win over College Rifles Eagles 110 to 30 - POD Yasmin Drake, ROD Sophie Watts
Y2 Navy Mako win 18 -16 at home - POD Kyla Williams, ROD Finn Blake
Y3 Mako win 19 - 16 - POD Mason Bowden, TOD Samson Setu
Y5 Orange Mako Vs Papakura Win 85 - 10 - POD Ethan Cherrington, TOD Liam Strong
Y5 Navy Mako vs TK Lost 40 to 50 - POD Levi Matson, TOD Tayton Nightingale
Y1 Orange Mako - POD Markus Potgieter, ROD Atlas King
Y1 Navy Mako - POD Viggo Mills, ROD Leo Birchall
Y6 Orange 80 vs Y6 Manurewa 70 - POD Cian Overend, TOD Harry Strong
U13 Orange Mako lost to Karaka - POD Logan McKinnon, TOD Cooper Murray
U11 Navy Mako 75 lost Waiuku 35
Year 5/6 U11 Girls Rippa beat East Tāmaki Manaia 65-45 - POD Isla Vickers, ROD Leah Houareau
Year 2 Orange Mako beat Weymouth
Y7 Navy lost to Karaka - POD Cooper Buchanan , TOD Caleb Rowson
Y8 Navy Mako - POD Laurence Stretton, TOD Ryder Jacobs
Y6 Navy Mako - POD Colt Overend, TOD Oskar Lawrence
U9 Girls Rippa - POD Mila Hillary, ROD Paris Kawiti
U13 Girls Ripper won 65 to 45 - POD Imogen White, ROD Rivyn Bowie

CROSSWORD ANSWERS

Across: 1. Filthy, 5. Sculpt, 8. Axe, 9. Affair, 10. Bait, 11. Dragon, 12. Drama, 15. Embalm, 17. Insect, 20. Salve, 21. Option, 23. Expert, 26. Three, 27. Debris, 29. Teem, 30. Candid, 31. Via, 32. Ripple, 33. Mayday.
Down: 2. Inform, 3. Trauma, 4. Yard, 5. Sedative, 6. Lean, 7. Tête-à-tête, 10. Boss, 12. Decorator, 13. Abet, 14. Also, 16. Mangrove, 18. Next, 19. Ever, 22. Item, 24. Phoney, 25. Retina, 27. Deep, 28. Scam.

Pohutukawa Coast Netball Club



RESULTS FROM 11 MAY

Premier vs Mellons Bay: Prem 2 - Win 42 - 20
Hihi vs Mellons Bay: S4 - Loss 17 - 30
Falcons vs Otara Scorpions: TinCity - Win 30 - 20
Wekas vs Shelly Park S3 - Loss 20 - 30
Pukekos vs Wakaaranga: S3 - Loss 26 - 30
Kererus vs Wakaaranga: S2 - Loss 16 - 38
C1 vs Mellons Bay: C3 - Loss 23 - 27
C2 vs Pakuranga: College Turquoise - Loss 6 - 41
J1 vs Howick: Teal - Win 30 - 6
J2 vs Wakaaranga J1 - Win 16 - 11
J3 vs Mellons Bay J4 - Loss 8 - 18
J4 vs Sunnyhills Nikau - Loss 3 - 12
J5 vs Monster Boot Camp J4 - Win 17 - 6



Above: J1

Clevedon Football Club



RESULTS FROM 11 & 12 MAY

CROCS U5 POD: MICAH SULLIVAN and Merit Award: TOBY SEARLE
COMETS U6 POD: ALEXIS MILLAR and Merit Award: LUCAS WATERS
CARDINALS U7 POD: LOUIS FARRELL and Merit Award: SOFIA SULLIVAN
CADETS U8 POD: STELLA WORKER and Merit Award: ARLO SEARLE
CHIEFS U9 v Papatoetoe United FC Red - POD: JOE RIEDEL and Merit Award: JUDE MILNE
CYCLONES U10 v Papakura City FC Black - POD: TOBY NEEDHAM and Merit Award: GEORGE CASHMORE
COLTS U11 v Waiuku AFC Cobras - POD: MASON JONKER and Merit Award: IKE WATERS
CHEETAHS U12 v Otahuhu United AFC Raiders - POD: JACOB NELSON and Merit Award: AARAV GILL
COBRAS U13 v Papatoetoe United FC Predators - POD: PARKER GIBBARD and Merit Award: NICHOLAS O'TOOLE



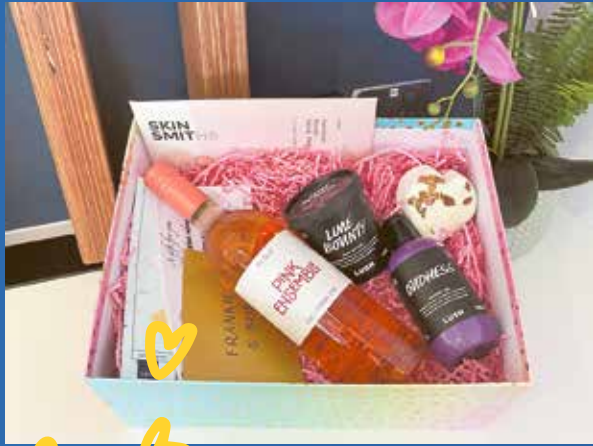
Above: U9 Chiefs



And the winner is....

With over 110 nominations in our Mother's Day Giveaway, the love for all of the mum figures in our community was clear to see.

Davina Smith was drawn as our winner, and popped into the office all smiles to pick up her pamper prize pack.



Our prize pack came from the recent Beachlands Maraetai Rugby Club Golf Day, which we won in their fundraising auction. We were rapt to be able to support a great community organisation and then pass on the love to a deserving local.



BARFOOT THOMPSON & | **Beachlands**
LICENSED REEA 2008

42 Wakelin Road • 09 536 4990 • beachlands@barfoot.co.nz



RayWhite



SET DATE OF SALE

66 - 68 Carlton Crescent, Maraetai

Unique Coastal Opportunity - Discover a coastal paradise that's as rare as hen's teeth! Nestled in a unique coastal location, this home offers a once-in-a-lifetime opportunity that's seldom found in the market. Featuring two homes on separate titles, with a combined land area of 1,618m² (approximately), this home has been cherished by the current owners for over 25 years.

It's now your turn to experience the lifestyle and charm this home has to offer. Don't let this rare opportunity slip away!

rwbeachlands.co.nz/BCH30956

Lighthouse Real Estate Ltd Licensed (REAA 2008)

6 2 3 1 6 2 1618

Set Date of Sale
Closes 4:00 pm 5 June 2024
(Unless Sold Prior)

View
Saturday & Sunday
12:00 - 12:30 pm



Brianne Bignell
021 400 979
brianne.bignell@raywhite.com

ALAN WHITE
ELITE
PERFORMER 22-23



Paula Kirkman
021 0290 8007
paula.kirkman@raywhite.com

WHY WAIT?

Hūnua trio reach for the sky in fundraising attempt

Ten-year-old Daniel Connolly (Hūnua) has convinced his mum, Stacey, to jump out of an aeroplane in the name of raising funds for the Cancer Society.

Daniel decided to support the fundraiser after three of his own family members were diagnosed with cancer last year, in addition to other family and friends.

The idea of leaping from a plane came from close family friend Dale O'Donoghue, who did a skydive last year. Dale will join Daniel and Stacey when they skydive on 25 May, with all three raising funds for the Cancer Society under

the name Team 2.5.

Asked about how she was feeling about the jump, Stacey said: "I'm getting heart palpitations just thinking about it."

Team 2.5 hope to raise at least \$3,000 for the Cancer Society. As well as the skydive, they are running an auction with a two-hour house and garden clean as first prize, a local artist pet painting/sketch as second prize, and set of three wooden chopping boards as third prize. Auction bids can be made by text to 027 696 9684.

Donations can be made to the team at: <https://jumpforcancer.org.nz/t-2-5>



Daniel Connolly will jump out of a plane later this month, to raise funds for the Cancer Society.

Decoding Annie Parker

Monterey Cinema
26 May | 1.30pm



Ticket per person
\$35.00

GOODIE BAG | RAFFLES | GIVEAWAYS

FOOD & ENTERTAINMENT GUIDE

4 Traditional Pizzas and 4 Sides DELIVERED from \$59.90 ONLINE CODE 22861*
Domino's
 *T&Cs apply.
 Open: Sun-Thu 11am-9:30pm
 Fri & Sat 11am-10pm
 Ph: 0800 30 40 50 or 09 951 3959
 www.dominos.co.nz
 E: beachlandsdom@gmail.com

THE FRANKLIN
 TAPHOUSE & KITCHEN
 Open 7 days from 12pm-late
 Woodfired pizzas
 Fri/Sat/Sun 12pm-late
 BOOKINGS RECOMMENDED
 Ph: 536 5978
 www.thefranklinpub.co.nz

VINALTO
 DINING • WEDDINGS • FUNCTIONS
 424 Creightons Rd, Clevedon, Auckland 2582
 PH 09 292 8845 • enquiries@vinalto.co.nz
 OPEN: Thur and Fri 5pm - late
 Saturday 12pm - late, Sunday 12pm -4pm

SUNKIST
 BAR • KITCHEN
 OPENING HOURS
 Tuesday - Thursday: 3-10pm
 Friday - Sunday: 12pm till late
 027 208 6942
 190 Jack Lachlan, Pine Harbour
 Small sharing plates
 Cocktails
 Marina view

Ambrosia
 (09) 536 4151
 Monday to Friday 10:00am - 11:00pm
 Saturday & Sunday 8:00am - 11:00pm
 44 Third View Ave, Beachlands
 The best of European Cuisine

BEACHLANDS CHARTERED CLUB
 Pōhutukawa Coast's only not-for-profit Chartered Club since 1948
 Open 7 days a week
 Mon & Tues 4pm-Late
 Weds-Sun 3pm-Late
 2 Weekly Membership Draws
 Fishing and 8 Ball Section
 Fortnightly Quiz Nights
 Free Pool & Darts
 Kids Room
 Gaming Lounge
 Free* Function Hire

HALLERTAU CLEVEDON
 26 CLEVEDON-KAWAKAWA RD, CLEVEDON, AUCKLAND — CLEVEDON@HALLERTAU.CO.NZ — 09 869 2989
 OPEN — MON & TUE: CLOSED — WED & THU: 4PM-10PM — FRI & SAT: 12PM-10PM — SUN: 11AM-9PM

PINOCCHIA
 OPENING HOURS
 Tuesday - Sunday: 5-9pm
 For bookings or takeaway: 09 217 1684 | 021 2144790
 44 Kouka Road, Beachlands
 pinocchionz | Pinocchio Pizza Pasta & more

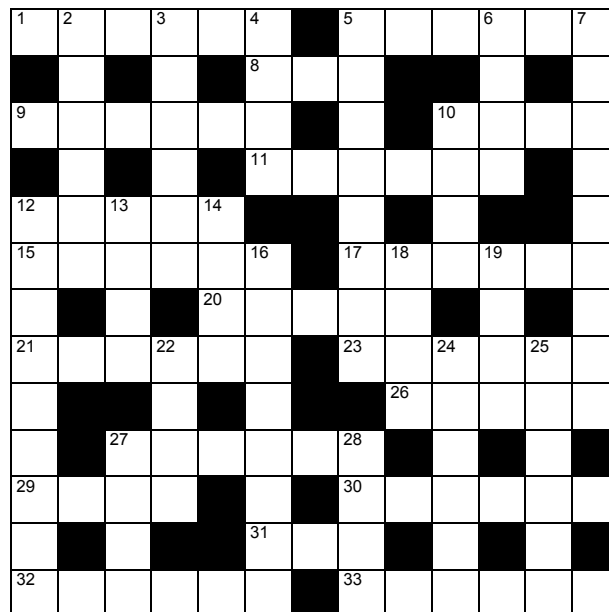
Coastal Cat Rescue 'Cat of the Month'

Coco is gorgeous! This special kitten is ready and waiting to meet her forever humans. She loves attention, playing with her toys and enjoys being brushed. Coco would suit a home that has older or no children and people that will give her the time to gain confidence and settle into her role as the perfect companion.

Coco is approximately four months old. She is desexed, flea and worm treated, microchipped, health checked and vaccinated. An adoption donation applies to help us with the costs to provide the very best of care to this adorable kitten. Please email bailifscourt@gmail.com to arrange an "Application to Adopt", ask any questions and organise to meet beautiful Coco.



RAYWHITE BEACHLANDS CROSSWORD



Brianne Bignell
021 400 979
brianne.bignell@raywhite.com

RayWhite.

Across

- 1. Foul (6)
- 5. Shape (6)
- 8. Cut (3)
- 9. Extra-marital liaison (6)
- 10. Lure (4)
- 11. Mythical creature (6)
- 12. Exciting or emotional series of events (5)
- 15. Prepare for burial (6)
- 17. Bug (6)
- 20. Ointment (5)
- 21. Choice (6)
- 23. Adept (6)
- 26. Trio (5)
- 27. Rubbish (6)
- 29. Swarm (4)
- 30. Forthright (6)
- 31. By way of (3)
- 32. Wavelet (6)
- 33. Radio distress signal (6)

Down

- 2. Tell (6)
- 3. Emotional shock (6)
- 4. Imperial distance (4)
- 5. Tranquilliser (8)
- 6. Slope (4)
- 7. Conversation between two people (Fr) (4-1-4)
- 10. Person in charge (4)
- 12. Wallpaperer (9)
- 13. Assist in wrongdoing (4)
- 14. As well (4)
- 16. Mud loving plant (8)
- 18. Immediately following (4)
- 19. Always (4)
- 22. One thing on a list (4)
- 24. Fake (6)
- 25. Part of eye (6)
- 27. Profound (4)
- 28. Con trick (4)

Answers on page 6

JUST LISTED

New Zealand

Sotheby's
INTERNATIONAL REALTY

177A Jones Road, Drury

3 2 5 Floor: 372 sqm Land: 7.47 ha

High above Clevedon, this hilltop home offers stunning 360° views over Clevedon and Hunua valleys, with Rangitoto, Coromandel, and the Sky Tower visible on the horizon. Crafted from over 500 hand-selected Douglas Fir logs milled in Rotorua, NZ. The property has been meticulously renovated to a condition surpassing its original state. The impressive logs create a unique warmth and cosiness akin to something out of "Yellowstone". Extensive Kwila hardwood decking wraps around the home on the lower level offering multiple options for entertaining or relaxing no matter the weather. A spacious three-bedroom floorplan allows for three additional bedrooms to be created if desired. Upstairs, the master suite's private balconies showcase panoramic views accompanied by idyllic birdsong. The majority of the expansive 18+ acres comprises pristine native bushland ensuring unobstructed views and easy care. A sheltered paddock accommodates a pony or sheep or provides a stunning building platform for a cabin. Extensive garaging, games area, Finnish sauna, chicken coops and tiered gardens complete the picture.

OPEN HOME: Sunday 19 May 11:00 - 11:45am

AUCTION THIS WEEK: 21 May 2024 at 10:30am, In Rooms (unless sold prior)

VIEW: nzsothebysrealty.com/SED10020

SARAH RICHARDSON 021 711 156



Scan to see more photos



Catch of the Week photo competition

Spinnaker Bay local Bill Parsons caught his 64 cm, 5.5 kg snapper at the Noises on a floating line baited with a whole pilchard, while fishing on his friend's launch *Wairua* last month.

It was the last fish of the day before packing up to come home.

To enter the Catch of the Week photo competition, email your photo and details about your catch (where it was caught, name of the boat, what you did with the fish, plus any other special details) to liz@gasmaraetai.co.nz.

The weekly winner will receive a \$50 Top Catch voucher from GAS Maraetai, and the season winner will receive a fishing rod and reel.



Classified Ads

PUBLIC NOTICE

Proposal to classify land and grant new community lease at 22 Kawakawa Orere Road, Kawakawa Bay

Auckland Council gives notice that Franklin Local Board intends to grant a new community lease to Counties Manukau Free Kindergarten Assn Inc. for the Kawakawa Bay Kindergarten. Part of the building is owned by Auckland Council and part by the association.

The lease is to be granted under the Reserves Act 1977, for 715sqm (more or less) for the Kawakawa Bay Kindergarten.

The land is legally described as Lot 1 Deposited Plan 47455 comprising 6323sqm, held by the Crown and vested in Auckland Council; and subject to the Reserves Act 1977. It is proposed to classify the reserve as a Local Purpose (community use) Reserve.

The Kawakawa Bay kindergarten provides early learning experiences for 2 to 5-year-olds. The association aims to provide and promote quality early childhood education and sustain quality early childhood education for present and future generations.

The proposed new community lease is for a term of 10- years with one right of renewal for a further 10years, as outlined in Auckland Council's Community Occupancy Guidelines (updated July 2023).

Any person wishing to comment or make a submission or objection to the above proposal is to send this in writing on Friday, 14 June 2024 by 5pm.

Please indicate if you wish to be heard concerning your submission.

Information provided to the Council is subject to the Local Government Official Information and Meetings Act 1987 and may be released by the Council under that Act. All submitters are asked to state in their submission if the whole or any part of the submission is to be kept confidential.

To lodge a submission, or request further information please contact:

Jenny Young

Community Lease Specialist, Auckland Council

jenny.young@aucklandcouncil.govt.nz

Phone 021 524 915 or 09 262 5798

Private Bag 92300, Victoria St West, Auckland 1142

Find out more: phone 09 301 0101 or visit aucklandcouncil.govt.nz



CLEVEDON & DISTRICTS HISTORICAL SOCIETY

ANNUAL GENERAL MEETING

Thursday 30th May 2024 7.30 pm, McNicol Homestead.
12 McNicol Road Clevedon. ALL WELCOME.
Phone 292 8421

SITUATIONS VACANT

Jubilee Event Coordinator – Part-time, short-term contract (5 months)



We are seeking a talented and dynamic event coordinator to plan and lead the Howick College 50th Jubilee Event in October. The ideal applicant will have experience in event coordination and administration, strong communication and organisational skills, a flair for detail, and the ability to collaborate with key stakeholders. This part-time fixed term role is 20 hours per week and offers a flexible work schedule for the successful applicant. The hourly rate is by negotiation. Please email your CV, cover letter and the completed employment application form on our website to: employment@howick.school.nz. Applications close on 24 May at 4pm.

WORK WANTED

RENOVATIONS

Bathrooms, kitchens, toilets - build, tile, glass, flooring, plaster and paint. Start to finish. Exp. builder. Refs avail. Ph: Gary 021 903 020 or 536-6358. Oakes Build Landscape Maintenance. www.oakes.nz.

MOWER AND CHAINSAW REPAIRS

All small engine repairs, mowers, ride-on mowers, chainsaws, weedtrimmers, & chain saw sharpening. No job too small. Free pick-up local area only. Ph: 536 5621 or mob 027 308 7777.

PAINTING/PLASTERING

Interior and exterior quality painting. Refs available. Ph: Gary 021 903 020 or 536 6358.

READY GRASS/ LANDSCAPING

Specialising in ready-grass, seeding, lawn levelling, turf cutting & landscaping. Locally based Ph: Adam on 022 015 2805.

HANDYMAN

You name it... renovations, DVS installation, gardening, retaining, fencing, landscaping, trellis, light building and maintenance work. Ph Gary on 021 903 020 or 536 6358.

BARCLAY MOWING

For all your mowing / gardening needs including lifestyle / large sections. Friendly professional service & great rates. Txt/Call 027 533 1527

PAINTER

Experienced local painter, 14 years in Sydney, back on the coast. Call me to discuss your project. Nigel 021 289 4557

Read online www.pctimes.co.nz



Professionals & Trades

BOATING & MARINE

Ovlov Marine Pine Harbour

09 536 5249 www.ovlov.co.nz

Sales and Service of outboard motors, inboards, sterndrives and IPS.

Situated in Pine Harbour Marina and mobile we can care for your vessel be it big or small. Contact the team on 536 5249 or email on phil@ovlov.co.nz for service enquiries and partsp@ovlov.co.nz for spare parts.



Professionals & Trades

BUILDERS



- NEW BUILD
- RENOVATIONS
- DECKS
- BATHROOMS

FOR ALL YOUR BUILDING NEEDS

Call Justin on: 021 460 011 justin@innovateconstruction.co.nz
Licensed Building Practitioner www.innovateconstruction.co.nz

CHIROPRACTOR



- Headaches / Migraine • Dizziness / Vertigo • Neck pain / Whiplash • Trapped nerves • Back pain / Sciatica
- Plantar fasciitis • Sports Injuries / Performance & more...

David Owen DC | Registered Chiropractor

ACC Registered . 25 years experience
02102 144 070 | clevelandchiro@gmail.com | www.clevelandchiro.co.nz

DENTAL

Make the right choice about your dental care

We are dedicated to your personal well-being through dental health



- Teeth whitening
- All ceramic tooth filling materials using CerecAC omnicam, 3D technology
- Permanent tooth replacements with dental implants
- For gum health and maintenance call our hygienists Shelley & Zahraa
- All aspects of general dentistry

FREE DENTISTRY IS AVAILABLE FOR ALL YOUNG ADULTS
Eligible from Year 9 until their 18th birthday Contact us today to learn more
Evening appointments available
Call us now on 530 8461 or email: info@whitforddental.co.nz

Dentists: • Dr. Rick Parfitt B.D.S • Dr. Alex Lindsay B.D.S
• Dr. Maad Youhanna B.D.S
Hygienist: • Shelley Chadwick R.D.H • Zahraa Talib B.O.H
Whitford Village, Whitford



smile dental
giving you one more reason to smile

QUALITY AFFORDABLE FAMILY DENTISTRY

*FREE dental examinations

*excl. xrays



129 Beachlands Rd, Beachlands, Auckland

www.smiledental.co.nz 09 302 0808



INTEREST-FREE DENTAL PAYMENT PLANS

Book online: www.marinadentists.co.nz 190 Jack Lachlan Drive, Beachlands
Call us: 09 535 1074

DRAINAGE & EARTHWORKS



Drainage Vision Limited

www.drainagevision.co.nz

Mike 027 593 0326

- Drain Unblocking • CCTV Inspections • Certified Drainlayer
- Vacuum Trucks • Pipe & Cable Locations

BROOKBY ENVIRONMENT PROTECTION SOCIETY

ANNUAL GENERAL MEETING

The Brookby Environment Protection Society will hold its Annual General Meeting on Sunday 8 June at 7.00pm, at 314 Twilight Road, Brookby.

Professionals & Trades

ELECTRICIANS

Auckland Wide Electrical
Ph 536 6800
Your Local Registered Electricians



- Heat Pump /Aircon Installations
- Switchboard Upgrades & Rewiring
- TV Cabling and Aerial Installations
- New House Wiring and Renovations
- Water pumps • Hot Water
- Oven Repairs • Lighting and Switchgear

www.awe.co.nz • help@awe.co.nz • free quotes
Providing electrical services on the Pohutukawa Coast & throughout Auckland

Pohutukawa ELECTRICAL

No job too small - No job too big!
Fast, reliable service.
Qualified lighting designer



PH: 536-4076 FREE Quotes
MOB: 021 769 964 www.pohutukawaelectrical.co.nz

MEAT SUPPLIER



- For all your homekill and hunting processing.
- Vacuum packing standard & delivery available.
- Qualified butchers, expert advice, friendly service.
- Sausages (gluten free available), bacon, salami, biersticks, biltong, smoking and curing.


027 632 8979
admin@meatworx.co.nz
www.meatworx.co.nz

MECHANICAL REPAIRS

MARAETAI AUTOMOTIVE

All Makes & Models | All Types of Repairs
Petrol - Diesel - European Vehicles - Loan Cars

- Servicing • WOF • Brakes • Clutches • Wheel Alignments
- Tyres • Transmission Services • Batteries • Welding
- Cambelts • CV Joints • Auto Electrical Repairs

131 Maraetai Drive, Maraetai
Ph: 536 6542  ALL WORK GUARANTEED
HOURS: Mon - Fri: 8am-5pm



POHUTUKAWA MOTORS .co.nz

AA APPROVED REPAIRER,
AA BATTERY STOCKIST
MTA ASSURED



WE ARE YOUR LOCAL, HONEST AND TRUSTED AUTOMOTIVE REPAIRER. POP DOWN AND SEE US. WE'LL LOOK AFTER YOU AND YOUR VEHICLE.

- ALL MECHANICAL REPAIRS
- WOF
- BRAKES
- TYRES
- AUTOMOTIVE AIRCON SERVICING

57 THIRD VIEW AVENUE, BEACHLANDS
09 536 6664

MORTGAGE ADVISERS

Loan Market

New Zealand's widest range of lenders, in one place.



Toni Dawson, Mortgage Adviser
027 646 9269
toni.dawson@loanmarket.co.nz
NZ Financial Services Group Limited (FSP286965)

Find out more at adviser.loanmarket.co.nz/toni-dawson

ROOFING



ROOFING & SPOUTING NZ LTD
Delivering Quality & Durability



MONIER ROOFING SPECIALIST, SUPPLIER & INSTALLER

RE-ROOFING | NEW ROOFS | ROOF COATINGS
CONCRETE ROOF TILE SPECIALIST | CONCRETE TILE REPAIRS
GUTTER REPLACEMENT | INTERNAL GUTTER CONVERSION

0800 766 350 | www.roofingnz.co.nz | info@roofingnz.co.nz

SCAFFOLDING

QUALITY | RELIABLE | WHITFORD BASED | LAYHER SCAFFOLD SYSTEM



DTS WRIGHT
SCAFFOLDING

Contact Dylan 021 239 4276 | dtswrightscaffolding@gmail.com

SURVEYOR

SURVEY PLUS
LAND SURVEYING

Your local Pohutukawa Coast Surveyor

admin@surveyplus.co.nz | 020 4 SURVEY (020 4 787839)

TREE SERVICES

CALL NATHAN 021 196 6509



COASTAL CUTTERS
TREE CARE ON THE COAST

- CHIPPING
- LAND CLEARING
- HEDGE TRIMMING
- TREE PRUNING
- TREE REMOVAL
- STUMP GRINDING

FIND US ON FACEBOOK coastalcutters@hotmail.com

TREE SERVICES



DS TREES LTD

Land Clearing
Tree Maintenance
Tree removal
Stump Grinding
Hedge Care

Phone Doug
021537171 • 09 5378595
info@dstrees.co.nz
www.dstrees.co.nz

Advertise here for \$30 weekly or \$35 fortnightly.

Ph: 021 026 14467 or email advertising@pctimes.co.nz

TREE SERVICES



JESSEP CONTRACTING
TREE CARE & REMOVALS

Your Local Arborists
Your problem is our specialty!

- Tree Care, fine pruning and removals
- Shelterbelt removals and chipping
- Palm cleaning and hedge trimming
- Hedge trimming
- Tree Light installations
- Small Hiab Lift and Shifts

CALL PHIL FOR A FREE QUOTE
022 607 4455
CHECK OUT jessepcontracting.co.nz

TYRES



TYREGUARD
PROTECTING YOUR JOURNEY

YOUR TRUE TYRE PROFESSIONAL ON THE COAST

- Friendly Reliable Service
- Locally Owned & Operated
- Over 20 Years Experience
- For ALL Your Tyre Needs

Agricultural, Batteries, Car / Passenger, Earthmover, Mag & Tyre Packages, Puncture Repairs, Truck / Commercial, Wheel Balancing, 4WD / Off Road, 24/7 After-Hours Callout

Call Mike 021 901 034 | sales@tyreguard.co.nz | www.tyreguard.co.nz

VETERINARY

Franklin Vets Beachlands

1/43 Kouka Road,
Pohutukawa Coast
Shopping Centre
538 0010 • beachlands@fvs.co.nz
www.franklinvets.co.nz

OPEN HOURS
Mon-Friday 8am-6pm
Saturday 9am-3pm



POHUTUKAWA COAST VETS

LOCALLY OWNED & OPERATED IN BEACHLANDS

Book an appointment
Ph: 09 320 1472
Or book online www.pcvets.co.nz



reception@pcvets.co.nz | 43 Wakelin Rd, Beachlands

WATER



Coastal
PUREWATER LTD

The highest quality water for all your household, property and commercial needs

Ask for our pure water by name

Manukau Quarries LP
885 Whitford-Maraetai Road, Beachlands | 09 2630220

WARDROBE SUPPLIER



wardrobeworld
get organised for life

Wardrobes | Melteca & Wire Shelving | Sliding Doors
Linen Closets | Garage Storage | Free Measure & Quote
Sean: 0273 433 866 | sean@wardrobeworld.co.nz

BUSINESS LISTINGS

ACCOUNTING SERVICES

Probiz Systems Ltd, Sharon Bramley	530 8036
Ian McLennan, CA www.iwm.co.nz	536 6715
Diane Myers CA, diane@myersca.co.nz	292 9470
Louw & Co, info@louwandco.co.nz	533 8420
Business Allsorts, MYOB & Xero Experts	536 5850
Peat Johnson Murray	869 2091
Giles & Liew, gilesandliew.co.nz	262 1955

AERIALS, TV & HOME THEATRE

Auckland Wide Electrical	536 6800, 021 998 665
--------------------------	-----------------------

AGGREGATES

Beachlands Mitre 10	536 6567
---------------------	----------

ALUMINUM WINDOWS

www.windowrenovations.co.nz	
Repairs and Replacements	021 297 2320

APPLIANCE SERVICING

Axial appliance servicing Service@axial.co.nz	573 0877
Appliance Wizard Ltd Ph Paul	0275 784 226

ARCHITECTS

Peter Diprose www.diprose.co.nz	530 9065 or 021 125 1498
---------------------------------	--------------------------

ARCHITECTURAL PLAN & DESIGN

Ross J Willoughby	530 9358
RBG Ltd	027 260 8005

AUTO ELECTRICIAN

Mobile Auto & Marine	0800 662 352
----------------------	--------------

BARBERS

Joe's Barbershop	536 7265
------------------	----------

BEAUTY

Xtreme Beauty & Barbers	600 2325 or 021 992 686
www.xtremebeauty.co.nz	

BED & BREAKFAST

Brookwood Lodge, Beachlands.	536 6975 or 0274 796 453
------------------------------	--------------------------

BLIND SERVICES

Blindworks - For all New Blinds - Plus Blind Cleaning and Repairs	0800 999 229
www.blindworks.co.nz	

Onsite blind cleaning & repairs - plus new blinds

info@onsiteblinds.co.nz	0508 253 262
-------------------------	--------------

BOOKKEEPERS

Business Allsorts, MYOB & Xero Experts	536 5850
----------------------------------------	----------

BUILDERS

Bryant Builders Ltd	027 493 5507 or 027 692 8777
Homing Instincts Ltd, ph Gareth Price	021 618 181 or 536 6422
Michael Nootobos	536 6628 or 0274 799 776
Revamp Renovations Ltd	027 437 4896
Stehr Brothers Construction	021 939 008
Superior Builders, ph Neil	021 079 2589

BUILDERS' SUPPLIES

Morton Timber Co. Clevedon	292 8656
Beachlands Mitre 10	536 6567

CARPET CLEANING

Aladdin Carpets, Phone Michelle	09 537 4320
---------------------------------	-------------

CELEBRANT

Ceremonies by Diana, www.celebrantdiana.co.nz	021 152 9925
-----------------------------------------------	--------------

COMPUTER REPAIR

Wi-Fi & Internet, Home and Office IT Support	
Call Graeme Thomas	027 429 0677

CONCRETE SERVICES

Aaron Ross Concreting	0210 233 2673
We Lay Concrete Ltd.	021 038 1086
Murray Douglas Limited	027 498 5267

COSTUME HIRE

Clevedon Costumes and Vintage Apparel	022 018 2711
---------------------------------------	--------------

DENTISTS

Whitford Dental Group	530 8461
- Dr Rick Parfitt, Dr Alex Lindsay & Dr Susan Clow	
- Hygienist - Shelley Chadwick & Zahraa Talib	530 8461
Anthony Hunt Dental Ltd, Dr Anthony Hunt, Clevedon	292 9071
Marina Dentists Pine Harbour	536 4361
Smile Dental Beachlands	
- Your local dentist. New patients welcome.	022 8888 171
- Free examination since 1996	09 302 0808
www.smiledental.co.nz	0800 4 smile

DIGGER & TRUCK HIRE

The Little Digger	027 278 0335 or 536 4424
Digger Landscapes www.diggerlandscapes.nz	021 415 832
Bizzy Bobcats & Diggers - call Mark	027 494 4414

DOCTORS

Beachlands Medical Centre	536 6006
---------------------------	----------

DRAINLAYERS

Vibe Earthmovers and Drainage	call Vincent 0272 225 377
Probuilt Earthworks Drainage	call Gary 021 617 611
Drainage Vision Ltd	call Mike Adams 027 593 0326
Certified drainlayer, CCTV inspections, drain unblocking	

EARLY CHILDHOOD EDUCATION

Whitford Early Learning Centre	530 8726
Clevedon Kidz Early Childhood Centre	292 8358

EARTH MOVING CONTRACTORS

Riordan Contracting	09 530 9429 OR 027 430 9429
Stehr Brothers Civil Construction	021 939 008
Pohutukawa Coast Earthmoving, Grant	027 475 8468
www.brookbycontracting.co.nz Earthworks/Carriage/Drilling	027 530 9290

ELECTRICIANS

Auckland Electrical & Pump Services	536 4074, 027 4741 579
Auckland Wide Electrical	536 6800, 021 998 665
Pohutukawa Electrical	536 4076, mob 021 769 964
Positive Electrical Services	021 801 606

ENGINEERS - CIVIL/ENVIRONMENTAL/STRUCTURAL

Fraser Thomas Ltd	278 7078
-------------------	----------

FENCING CONTRACTORS

Craig McLeod	027 292 5844
White Fencing:	292 8064, 0274 957 868
- rural fencing, retaining walls	www.whitefencing.co.nz

FLOORING

Nicks Floor Sanding	536 6916, Mobile 021 875 456
---------------------	------------------------------

FLORISTS

Clevedon Flowers, www.clevedonflowers.co.nz	292 9540
Harbour Rose Florist - Wedding and Events	021 0243 5299

FUNERAL DIRECTORS

Resthaven Funeral Services	
Rachel Bennis & Raewyn Proctor	533 7493, 267 2530
Ensom Funeral Services	
John Ensom & Jo Nevin	299 6646 or 524 6765
Fountains Funeral Directors & Monumentalists -	
Papakura, Franklin and Manurewa	298 2957
Howick Funeral Home Robert Johnstone - Mark Rowley	534 7300
Souly Funerals Beachlands	0800 47 68 59

GARAGE DOORS

Repairs & Service, Metro Garage Doors	263 6608
---------------------------------------	----------

GARDEN CENTRE

Beachlands Mitre 10	536 6567
---------------------	----------

GARDENING

Rosie's Gardening Service	021 0233 5998
---------------------------	---------------

GEOTECHNICAL SERVICES

Fraser Thomas Ltd	278 7078
-------------------	----------

GIBSTOPPING

Gib stopping & painting - Tony	0274 966 394 or 536 6477
--------------------------------	--------------------------

GLASS AND GLAZING

Manurewa Glass	266 7794
Howick Glass	535 4180

GUTTER CLEANING

Skyhigh Roof and Gutter Cleaning Ltd	
Website: www.skyhigh.nz	021 951 719

HAIRDRESSING

Hair Do's @ Maraetai, ph Denise	0274 599 901
Cooper Hairdressing, 16 Te Pene Rd, Maraetai	027 329 1781

HANDYMAN SERVICES

Local Handyman:	536 5050 or 021 156 7370
Oakes Build Landscape Maintenance, www.oakes.nz	021 903 020

HEAT PUMPS

Positive Electrical Services	021 801 606
Auckland Wide Electrical	536 6800
AES - Auckland Energy Solutions	
Website: www.aes.nz Phone: 09 575 1191	

HOUSE WASHING

BEST Property Services	021 366 615
Just Clean Me, Exterior Cleaning Services	022 089 2383
House washing, gutter cleaning, roof treatments, water blasting.	

JEWELLER

Paul Taylor Manufacturing Jewellers	536 4200
Repairs/Remodelling/Valuations/Insurance Replacements	
Shop C/7, 129 Beachlands Rd, Pohutukawa Coast Shopping Centre	

KITCHENS

Kitchen Craft Ltd, Ph Warren	09 274 4221
for Sizzling Kitchen Design & Cabinetry	www.kitchencraft.co.nz

LANDSCAPING

Eastside Landscapes	021 484 158
Nicky Auld - landscape design, consultations	021 972 534

LAUNDROMAT

Kiwi Laundry Co, www.kiwilaundryco.co.nz	022 463 8416
7 DAYS at GAS Maraetai, 131 Maraetai Drive, Maraetai	536 4218

LAWNMOWING & GARDENING SERVICES

JIMS MOWING Beachlands - Frank	027 415 3657
Greenacres - Stephen Howe	292 4165 or 021 2266 753
Prolawns (Beachlands based) Shane	021 746 887
R&R Garden ServicesRichie: 021 917 332, Roanne: 027 252 8183	
Coastal Gardener (Beachlands based) Darryl	022 360 3065

LAWNMOWER SALES/SERVICE/REPAIRS

B'inds/M'tai mower/chainsaw repairs	536 5621 or 027 308 7777
-------------------------------------	--------------------------

LEGAL SERVICES

Sutcliffe Matson Law	09 279 8351 or 021 327 030
----------------------	----------------------------

LOCKSMITHS

Local Locksmith - Tony	536 5050 or 021 156 7370
Armstrong Smarter Security	0800 506 111

LPG SUPPLIERS

Matagas	0800 954 427
---------	--------------

MARINE AND BOATING

Ovlov Marine Pine Harbour LTD	536 5249
-------------------------------	----------

MECHANICAL REPAIRS

Maraetai Automotive	536 6542
Pohutukawa Motors, 57 Third View Ave, Beachlands	536 6664
Garaway Autos	022 395 6185
Luke's Garage Ltd	09 218 6442 / 022 301 0412

MIRRORS

Howick Glass	535 4180
--------------	----------

OUTBOARD REPAIRS/MARINE ENGINEERING

Eastern Marine - Mercury Certified Service Centre - Outboards, stemdrive, petrol & diesel.	536 6252
--------------------------------------------------------------------------------------------	----------

PAINTERS & DECORATORS

East Auckland Painting Ltd	027 619 2619
specialistlinings.co.nz We fix, stop, and paint	0800 54 64 64
Painta Property Services-Beachlands+Sth East Akl	021 101 6937
Interior / Exterior / Roof / Fences - mikegrubb@painta.co.nz	
Paint, waterblasting, plaster, tidy up removal,	027 525 4024
aggregate sand delivery. Joel@insulape.co.nz	

PEST CONTROL

Coastal Pest Solutions (including rats, rabbits, possums, pest birds, wasps & bees)	536 6020 or 0273 932 125
Professional Pest Control	536 6690 or 021 078 3622

PET ACCOMMODATION

Fairfield Pet Lodge, Clevedon	027 222 0307
Pets at Whitford Spa and Stay (PAWSS)	530 8860

PHARMACIES

Unichem Beachlands Pharmacy	536 6500, fx 536 6590
-----------------------------	-----------------------

PHYSIOTHERAPIST

Beachlands Physio beachlandspysio.co.nz	09 222 4120
-----------------------------------------	-------------

PLASTERING SERVICES

Solid Plastering, Bruce Parsons	021 981 812
---------------------------------	-------------

PLUMBERS

Dynamo Plumbing	0800 175 988
BF Brown Plumbing & Drainlaying	0800 477 455

PLUMBERS & GASFITTERS

Ashby Plumbing & Gas	292 2445 or 0272 553 499
----------------------	--------------------------

PROPERTY MANAGEMENT

Rent People Ltd	0800 426 580
Ray White Lighthouse Licensed Real Estate	536 7011
Barfoot & Thompson Beachlands	536 4990

PUMP SALES & REPAIRS

Auckland Electrical & Pump Services	536 4074, 0274 741 579
Malmaks Water Shop	530 8872, 021 353 158
Allwater Pumps and Supplies Ltd	09 536 5444, 027 536 5444
Clevedon Pumps & Filtration	027 479 7741

QUARRY

Manukau Quarries	263 0220
------------------	----------

QUANTITY SURVEYORS

Hope & Associates - Residential estimating specialist	021 882 312
-------------------------------------------------------	-------------

REAL ESTATE AGENTS

Barfoot & Thompson Beachlands	536 4990
Barfoot & Thompson Whitford	530 8292
RE/MAX Clevedon	292 8388
Ray White Lighthouse Licensed Real Estate	536 7011

ROOF PAINTING SERVICES

Master Tradesman. Text details for fast service:	027 517 8494
Visit our website: www.5starroofpainting.co.nz	

ROOF SOFTWASHING

Skyhigh Roof and Gutter Cleaning Ltd	
Website: www.skyhigh.nz	021 951 719

ROOFING SERVICES

Alba Roofing	021 584 530
--------------	-------------