

21 June 2024

## Local Blues player inspires kindy kids



Kawakawa Bay Kindergarten students are delighted with their new Blues promotional gear, donated by Julie McWhannell (back left), mum of Blues lock Laghlan McWhannell.

Kawakawa Bay kindergarten students are learning some important messages about health and fitness, with inspiration from Blues lock Laghlan McWhannell who was born and raised in Kawakawa Bay.

Laghlan's family has lived in Kawakawa Bay for 28 years. His mum, Julie, is a passionate advocate for good health, fitness and overall wellbeing. She has donated Blues caps, pencil cases, posters and flags to children at the kindergarten, and is sharing important messages about nutrition and fitness.

Julie says that a lifetime of being active and healthy has helped Laghlan get to where he is now. Laghlan is a professional athlete, contracted to Auckland Super Rugby team the Blues, Waikato provincial rugby club in Hamilton and regional rugby club Hautapu in Cambridge.

Life in the McWhannell house was always active while Laghlan and his sister Kaitlin were growing up, says Julie. "We would invite friends' kids to join in as much as possible. There were always plenty of challenges. We are all pretty competitive, we had fun but we pushed each other too."

When Laghlan and Kaitlin were at school, training for athletics day involved a 5km run to the boat ramp and hill sprints up Te Papa Road. Cross country meant a 5km run up the hill and short course trail runs with the Leppin and Xterra series. Triathlon training meant swimming in the bay and cycling up Ōrere Hill and around the bays.

"Kawakawa Bay makes it easy to have fun but still

CONTINUED ON PAGE 6

LICENSED TO SELL

Ian 027 285 9314  
Jenny 0204 000 2564  
Nicolette 027 702 9157  
Mark 027 523 2245

#1 Top Salesperson  
Beachlands Branch 2023

BARFOOT & THOMPSON

SPECIAL AGENTS  
003

We're here for **you** and all your property management needs!

BARFOOT & THOMPSON  
PROPERTY MANAGEMENT

Beachlands  
09 536 4990

RayWhite.  
BEACHLANDS

Your Premium Choice in Property Management

Ray White Beachlands P : (09) 536 7011  
Lighthouse Real Estate Limited E : beachlands.nz@raywhite.com  
Licensed (REAA 2008) W : rwbeachlands.co.nz  
A : 81 Second View Avenue, Beachlands



Visit us  
226 North Road,  
Clevedon 2248  
Ph: 09 292 8656

Email: office@mortontimber.co.nz  
Web: www.mortontimber.co.nz  
Facebook: mortontimber.clevedon

FIT FOR A KING

GUM SLEEPERS 200X100X2.4M  
(LOCALLY SOURCED) \$140 plus gst each

PREMIUM POSTS 2.4M (140-165) H4  
\$25 plus gst each

PLYWOOD 9MM U/T NON STRUCTURAL  
2400X1200 \$35 plus gst per sheet

To be sold as bundles

No2 1.8 quarters (75-99)diameter  
100 in a bundle \$4.90 each post plus gst

No3 1.8 rounds (65-89)diameter  
100 in a bundle \$3.90 each post plus gst

No3 2.4 rounds(65-89)diameter  
50 in a bundle \$4.00 each post plus gst.



OPENING HOURS  
MONDAY - THURSDAY 7:30AM TO 5:00PM  
FRIDAY 7:30AM TO 4:30PM & SATURDAY 7:30AM TO NOON

INSIDE: Whitford Manor residents fed up with lack of wastewater progress p3

Lifestyle feature p7-9

RayWhite.  
Second Generation Real Estate  
**EXPERIENCE** the difference...  
Ray White Beachlands P : (09) 536 7011 or (021) 400 979  
Lighthouse Real Estate Limited E : beachlands.nz@raywhite.com  
Licensed (REAA 2008) W : rwbeachlands.co.nz  
A : 81 Second View Avenue, Beachlands

EmbroidMe.  
East Tamaki  
We Supply & Brand  
Uniforms & Promotional Products  
Embroidery, Printing, Lettering, Dye Sublimation and more...  
Cnr Smales and Springs Rds, East Tamaki - 09 265 0300

Transform your outdoor space  
Building Supplies, Timber, Bulk Landscaping  
available at 42 Bell Road, Beachlands.  
Open 7 days, all welcome.  
MITRE 10  
BEACHLANDS  
WITH YOU ALL THE WAY

Deadlines: Display advertising - 5pm Thursday. Classified and News - midday Friday

advertising@pctimes.co.nz | www.pctimes.co.nz

# Pohutukawa Coast Times

## GET IN TOUCH

**E:** info@pctimes.co.nz  
**W:** www.pctimes.co.nz  
**F:** facebook.com/pctimes  
**A:** PO Box 5, Beachlands 2147

## EDITOR

**Leanne Chamberlin**  
 021 426 207  
 leanne@pctimes.co.nz

## ADVERTISING

**Melody Cutfield**  
 021 0261 4467  
 advertising@pctimes.co.nz

## CLASSIFIEDS

advertising@pctimes.co.nz

## DELIVERY/DISTRIBUTION

distribution@pctimes.co.nz

## ACCOUNTS

**Pam Rutherford**  
 accounts@pctimes.co.nz

The Pohutukawa Coast Times is distributed weekly to 6500 homes and businesses in: Whitford, Brookby, Beachlands, Maraetai, Clevedon, Ardmore, Alfriston, Kawakawa Bay, Orere Point, Hunua and Paparimu

Member of the New Zealand Community Newspapers Association



The PC Times 20 years ago:  
 18 June 2004: Clevedon next for sewerage?



## Weekly Tide Chart

Date	Moon	Low Tide	High Tide	Direction
21 Fri	☉	12:14am ▼ 1.0m	6:26am ▲ 2.9m	🐟🐟🐟
22 Sat	☉	1:00am ▼ 0.6m	7:15am ▲ 3.4m	🐟🐟🐟
23 Sun	☉	1:46am ▼ 0.9m	8:04am ▲ 3.1m	🐟🐟
24 Mon	☾	2:34am ▼ 0.8m	8:54am ▲ 3.1m	🐟
25 Tue	☾	3:23am ▼ 0.7m	9:43am ▲ 3.2m	🐟
26 Wed	☾	4:14am ▼ 0.7m	10:32am ▲ 3.2m	🐟
27 Thu	☾	5:05am ▼ 0.7m	11:22am ▲ 3.2m	🐟🐟

MARINE FORECAST – VHF CHANNEL 19  
 AUCKLAND FORECAST – 0900 999+ YOUR STD

Pine Harbour Electrical  
 Unit 1A Pine Harbour Marina  
 P: 536-6177  
 W: www.phe.co.nz

# Editorial by Franklin Local Board Wairoa Representatives

We can take the environment for granted so it was excellent to see Auckland recognised as a Tree City of the World by the Arbor Day Foundation.

It was no one-off, with the award made for the fourth straight year, making our home one of 200 cities recognised across 22 countries.

We are thrilled our efforts to increase urban ngahere cover are paying off, with communities planting thousands of trees, including in our regional parks.

Franklin is blessed to contain open spaces and the social, cultural, economic, and environmental benefits they bring, but it doesn't mean we can ease off, especially when you regularly put the state of the environment at the top of your concerns.

Tree Cities of the World aims to create more green spaces in urban areas by recognising cities doing well. Last year Council planted about 750,000 trees and plants, many under the Urban Ngahere Programme, which since it started in 2018 has added 2,000 mature street trees annually, a figure expected to grow to 5,000 this year.

We are one of 16 of Auckland's 21 local boards to adopt urban ngahere action plans that support increasing tree canopy cover in road corridors, parks

and open spaces.

Your focus on the environment also helped guide our recent decision to allocate another \$45,000 to Predator Free Franklin Te Ara Hikoi.

We were also able to commit \$10,000 to the Finding Franklin Bats research programme, which has already found the critical endangered species rated long-tailed bat (pekapeka tou roa) is more prevalent across the area than first thought.

Recently we were able to acknowledge volunteers who have done 30 years of incredible work to protect the kōkako in the Hūnua Ranges, and we believe our tiny and shy bat is just as important.

There is quite a way to go to safeguard it, so this funding will allow another small step on the path to understanding more.

In a third environmental move, \$10,000 was also allocated to the Papakura Stream restoration initiative, which unites the Franklin, Papakura and Manurewa boards in a project designed to help clean-up the waterway.

Careful financial management also allowed us to commit \$10,000 to our Franklin Local Economic Broker programme, something many businesses in the area have benefited from, and \$12,000 to Coastal Rescue Service

Grants – which helped support Maraetai Coastguard.

And a nod to the willing volunteers of Te Puru Trust too.

It recently relinquished its Council Controlled Organisation (CCO) status.

Breaking its ties to Council has taken more than a decade, with former chair Kevin Obern raising the idea in 2014, 12 years after the trust was formed by the then Manukau City Council to complete and run the community centre.

Those plans stalled at the trust's request for a few years, but another former chair, Mat Tucker, revived the move.

We acknowledge the capable people who have contributed to Te Puru becoming the sporting heart of Beachlands-Maraetai.

The trust has good people dedicated to delivering for the community, and we know they remain committed to ensuring the area has quality facilities.

As ever, if you see something that needs attention, call 09 301 0101 or log it at www.aucklandcouncil.govt.nz and request a logit reference. You can also email Angela Fulljames, Malcolm Bell or Amanda Hopkins - firstname.surname@aucklandcouncil.govt.nz

## Just Hardwood Floors

**Visit our showroom**  
**34B Allens Rd**  
**East Tamaki**

Mon - Fri 9.30am - 4.00pm

**sales@jhf.co.nz**  
**www.jhf.co.nz**

**Ph: 272 2890**





## SUTCLIFFE MATSON

LAW

### LAWYERS SERVING THE POHUTUKAWA COAST

38A Wakelin Road, Beachlands  
 Available Monday - Friday, by appointment



**Conveyancing, Refinancing, Wills,**  
**Powers of Attorney, Business Transactions**  
**Family & Commercial Law**  
**and other general legal needs.**

We are happy to meet after hours  
 at your home for your convenience.

Ph: 09 279 8351 or Braden: 021 327 030  
 braden@smlaw.net.nz | breanna@smlaw.net.nz  
 www.sutcliffematsonlaw.net.nz

photo credit: To&Co Photography  
**BREANNA FULLER** AND **BRADEN MATSON**  
BCOM/LLB (HONS) | ASSOCIATE MA/LLB | DIRECTOR

One of New Zealand's best and longest running Antique Fairs!



Quota Papakura Inc.

Presents the annual

## ANTIQUÉ FAIR

---

OPENING HOURS

Sat 6th – Sun 7th July

9.30am – 4pm

\$8 Entry

DRURY SCHOOL HALL

Young Crescent, 2113

Café on site    Enquiries to 027 298 3854 or 021 334 055 or 027 323 4895  
 Proceeds to local community organisations  
 Quota Papakura Inc. Charities Commission Registration #CC23580



St Hilda's and St. Mark's

Anglican Church

3 Wakelin Rd, Beachlands

SERVICE

Sunday 9:30am

All Welcome



## PRIMA

COLLISION REPAIRS

Complete panelbeating and car painting

East Tamaki: Unit B 154 Harris Rd, East Tamaki, Auckland 09 274 4778  
 Manukau: 2/117 Kerrs Rd, Manukau, Auckland 09 268 9340

# Manor residents fed up with lack of wastewater progress

## Auckland Transport works with Police on crash investigation



Whitford Manor Estate residents took to the street this month to protest about the development's current wastewater situation.

Frustrated Whitford Manor Estate residents took to the roadside outside their homes with placards on Saturday 8 June, in a protest aimed at drawing Council's attention to the environmental impact of their four-year wait for a wastewater treatment plant.

Whitford Manor Estate has a complex history. The initial resource consent granted for the development would have seen the development's wastewater discharged into ponds and wetlands within Whitford Park Golf Course. In 2019 Council over-rode this decision, by granting a resource consent variation which permitted the developer, Le Coz Ltd, to establish an on-site wastewater treatment plant which would discharge up to 150 cubic metres of treated wastewater over an 8-hour period directly into the adjacent estuary. The consent variation was later challenged by way of a judicial review instigated by the Whitford Estuaries Conservation Society.

In the four years since then Auckland Council has attempted to identify a solution, working alongside Franklin Local Board, Ngāi Tai ki Tāmaki, Watercare, Whitford Residents and Ratepayers Association, Whitford Estuary Conservation Society, Whitford Manor residents, representatives of the village's commercial area, and Whitford Golf Course.

Thirty one homes have now been built on the development, with more under construction, but there is still no

operational wastewater treatment plant to deal with sewage and greywater. Instead, wastewater is collected within large holding tanks onsite. When the tanks are full, the wastewater is removed and trucked out of the area.

James Hassall, Auckland Council GM Licensing and Regulatory Compliance, says the council is waiting on Le Coz Ltd, as the developer and original owner of the development, to apply for and obtain a replacement discharge consent before the plant can be fully commissioned. Hassall says the developer has indicated that this consent application will be lodged in June.

Council says the trucking of waste was intended to be an interim measure until a replacement discharge consent was obtained, and the plant commissioned. "This measure was agreed to as part of the settlement by parties to judicial review proceedings in the High Court," says Hassall.

However Whitford Manor residents are unhappy with the holding tank solution. Whitford Manor Estate resident Robyn Newman-Hall says there have been at least six spills this year from the wastewater holding tanks, putting the adjacent estuary at risk of contamination.

In February this year, the council issued an abatement notice stating that no discharges are to be made from the wastewater treatment plant.

James Hassall says the wastewater treatment plant and the land it is on are owned by the Whitford Manor Estate

Residents Society Incorporated, of which all owners in the development (including Le Coz Ltd in relation to any unsold lots) are members.

"Therefore, all owners have a responsibility to resolve the current issues. We certainly empathise with these residents and the complex position they find themselves in, and have been speaking with representatives of the Society about steps it can take independently of the developer to progress the commissioning of the plant."

Auckland Council's Healthy Waters' unit monitors the Turanga Creek estuary near the boat ramp. Hassall says results routinely show poor water quality, with faecal contamination predominantly caused by stock as well as birds in the large rural catchment. There is also some evidence of human source contamination, but Hassall says it cannot be attributed to Whitford Manor specifically.

"Results show quality has worsened since November 2022, however again, there is no evidence to suggest this is linked with activities at Whitford Manor," says Hassall. "Issues at the plant have been reported several times this year and twice over the previous three years, and what little discharge there has been [is] of local effect."

Robyn Newman-Hall hopes the residents' protest will help progress a solution.

"Thanks to those who tooted. It really raised our spirits."

Auckland Transport's head of road safety engineering, Michael Brown, says AT will work closely with New Zealand Police to undertake a full investigation into what may have caused last week's tragic crash which resulted in the death of a person on Whitford Maraetai Road last Monday. "The report and recommendations will be submitted to the coroner as part of the coronial investigation," says Brown.

Statistics supplied by Auckland Transport show 24 crashes occurred on the same short stretch of road over a five year period from 2019-2023. During that time, there were 2 serious crashes, 5 minor crashes and 17 non-injury crashes.

One local resident spoken to by the *PC Times* has lived adjacent to the site for 20 years. They say vehicles losing control in the wet has been a common occurrence, although incidents seem to have subsided since the smoother road surface was laid.

"We haven't kept count, but can say there's many incidents where cars have come off the road and it's not been called in to Police, or drivers have left the scene beforehand. They either managed to drive away or have been pulled out by mates, sometimes frustratingly leaving broken farm fences behind."

The resident says most of the out-of-control vehicles cross the centreline.

"With the increasing number of vehicles using the road it's been a recipe for tragedy we hoped wouldn't eventuate."



### OUR LADY STAR OF THE SEA CATHOLIC PARISH

We celebrate Mass at 4.30pm on the first Saturday of the month. On other Saturdays there will be Celebration of the Word with Holy Communion.

St Hilda's Church, 3 Wakelin Road, Beachlands

Visit our website for details [www.beachlandsc.com](http://www.beachlandsc.com)



**Howick FUNERAL HOME**  
New Zealand owned & operated since 1993



Robert Johnstone & Kevin Kelleher

A privilege to care for your family



Every life is special, we understand that. Let us pay tribute to the life of your loved one and celebrate the unique way they have touched you, your family and those around you.

For a personal, professional service contact us today to discuss your options:  
35 Wellington St, Howick | Phone 534 7300 | [www.howickfuneralhome.nz](http://www.howickfuneralhome.nz)



**EASTERN MARINE**  
ENGINEERING SERVICES

- ▶ ENGINES
- ▶ PARTS & ACCESSORIES
- ▶ PROPELLERS
- ▶ SERVICE & REPAIR



Unit 4/A, 190 Jack Lachlan Drive, Beachlands, Pine Harbour Marina  
09 536 6252 | [info@easternmarine.co.nz](mailto:info@easternmarine.co.nz) | [easternmarine.co.nz](http://easternmarine.co.nz)



# Past pupil returns to school to launch latest book

A popular children's author has returned to her roots to launch her latest book.

Melanie Drewery was a student at Brookby School from 1975 to 1980, and recently chose to return the school to launch her latest book, *Nanny Mihi's Harvest/Te Hauhake a Nanny Mihi*.

The book is the fourth in the 'Nanny Mihi' series, which was inspired by Melanie's own tamariki when they were at Playcentre.

"Back in the late 90s there were very few books with easily accessible te reo Māori in them," says Melanie. "I wanted to write something with simple messages about a family doing things together which incorporated te reo Māori and tikanga Māori as well as giving families ideas about activities that don't cost the earth and often embrace the natural world."

*Nanny Mihi* has been very popular in NZ schools and pre-schools for a long time. She first appeared in 2000 and has been used in teacher training schools as an example of a valuable teacher resource for years.

"I decided to launch the book at Brookby School because I went there as a child and I thought it would be a nice idea to give back and encourage tamariki there to follow their dreams," says Melanie. "It's hard work being a writer and getting published but I made it."

Melanie says she has lots of vivid memories of Brookby School.

"One, which would never happen today, was the end of the flag pole. We used to have to line up in the morning and raise the flag and sing before we started for the day. One day the flag snagged just before it got to the top. One of the big boys climbed up the pole to release it. When he was almost to the top, the flag pole snapped and he hurtled to the ground in front of us. Fortunately he was not too badly injured. I also remember the giant oak tree and collecting acorns for the ducks. Being allowed to ride my pony to school and leave him in the little paddock by the church. And pet days - they were really fun."

Published ahead of Matariki, *Nanny Mihi's Harvest* is fully bilingual and offers young readers the chance to learn about growing a garden, harvesting, and sharing food — letting tamariki and whānau explore the significance of harvesting for the Māori New Year.

Melanie has published over twenty book titles to date.

**Right: Author Melanie Drewery introduces Brookby School students to the latest book in her *Nanny Mihi* series.**



**RayWhite.**

## AUCTION

15 Alexander Avenue, Maraetai

Nestled in a prime location, this remarkable property beckons you to seize the day and secure your slice of seaside paradise.

- 4 bedrooms and 2 bathrooms, offering ample space for growing families to thrive and create cherished memories.
- Open-plan kitchen, living and dining area seamlessly blend together.
- Expansive deck and conservatory, where panoramic sea views stretch out before you.
- If you're seeking a new project, this home offers boundless potential.

[rwbeachlands.co.nz/BCH30823](http://rwbeachlands.co.nz/BCH30823)

Lighthouse Real Estate Ltd Licensed (REAA 2008)

4 1 2 1 2 809

**Auction**  
The Shed @ Ray White Beachlands  
6:00 pm 1 July 2024  
(Unless Sold Prior)

**View**  
Saturday & Sunday  
11:15 - 11:45 am



**Brianne Bignell**  
021 400 979  
brianne.bignell@raywhite.com

ALAN WHITE  
**ELITE**  
PERFORMER 22-23



**Paula Kirkman**  
021 0290 8007  
paula.kirkman@raywhite.com

WHY WAIT?

metlifecare



# Country club charm in the heart of Clevedon

## ŌTAU RIDGE

Experience the epitome of luxury and comfort at Ōtau Ridge. Nestled beside a charming rural township, with uninterrupted views over the Wairoa River and Hunua Ranges, it's Metlifecare's latest premium retirement destination.

Relax in your stunning villa, soak up the club-like atmosphere of the terrace bar and enjoy all of the activities that the region has to offer.

Show home now open by appointment only.

● **Find a village that feels like home**  
 Call Siobhan on 027 220 5672  
 siobhan.cudby@metlifecare.co.nz  
 17 Clevedon-Kawakawa Road, Clevedon  
[otauridge.co.nz](http://otauridge.co.nz)



### Village features\*

- \_\_\_\_\_
- Bistro-style café and bar
- \_\_\_\_\_
- Dining room
- \_\_\_\_\_
- Hair salon
- \_\_\_\_\_
- Library
- \_\_\_\_\_
- Activities room
- \_\_\_\_\_
- Movie theatre



### Stage 1 villas selling now\*\*

Architecturally designed two and three-bedroom villas with breathtaking views, top-of-the-line finishes and top-tier appliances, you'll have the perfect haven to entertain or relax and retreat. Get in touch with us today to secure yours.

**Two-bedroom villas from \$995,000<sup>^</sup>**  
**Three-bedroom villas from \$1,625,000<sup>^</sup>**

\* Currently under construction. Expected to be available from late 2025. Timing subject to change.  
 \*\* Currently under construction, expected to be available from June 2024. Timing subject to change.  
<sup>^</sup> Price is for an Occupation Right Agreement secured by a first ranking mortgage in favour of the statutory supervisor on behalf of the residents. Price valid for 30 days from time of printing. Stock availability subject to change. All images are artist's impressions and an indication of product only.

# Local Blues player inspires Kawakawa Bay kindy kids

CONTINUED FROM PAGE 1

be active and healthy,” says Julie. “If they didn’t go for a run that day, there was no dessert that night. It was tough love I guess, but boys in particular love challenges.”

Laghlán attended Clevedon School during the 2000s, and during that time was always involved in sport including athletics, harriers, swimming, cross country running, triathlons and rugby for Ardmore Marist.

During their secondary school years, he and Kaitlin both attended boarding

school at St Peters in Cambridge, where Laghlán’s talent for rugby was recognised and nurtured.

“They did a lot to help him develop his skillset,” says Julie. “His science teacher was a lock, and he’s had a huge influence on him. Laghlán’s boarding house director was involved in Waikato Rugby as well, and so they both nurtured him. As his talent shone he got lots of shoulder taps from different schools and teams, but he wanted to stay at St Peters. St Peters wasn’t known as a rugby school back then, but it had lots of opportunities to try different things. He got into water polo and shooting as well, but when he is playing rugby he is in his happy place, he struggled in the classroom. Rugby with his mates was fun. He liked the contact with his team mates and boarding mates who were like his brothers. But the whole boarding school experience for both kids was great, they both say very positive things about their boarding life, they have lifelong friends and connections around the world.”

Throughout school Laghlán made various representative teams including New Zealand schools, Waikato U19, New Zealand U20s, Chiefs’ Development Squad and Chiefs Super Rugby team.

Julie now shares the secrets to Laghlán’s success with the children at Kawakawa Bay Kindergarten.

“I think if you start early with these little kids and just say ‘movement, keep moving’ and make it fun for them they will embrace it. When someone struggles in the classroom, change direction, think outside the square. Outside is still a great learning opportunity, you can give them a lesson in the paddock, on the pitch or on a walk, wherever! It’s also about opening their eyes to look around. We all have opportunities, not always equal unfortunately but it doesn’t matter. If you have a gift or a drive for something, pursue it. Chase it and try it. You don’t need special clothing, looks, money or ability to achieve a goal. Just start with small steps and go for it. Get out there. Fill your vision with sunshine, soak it up and dream about what you can do. You never know where that first step on your journey could take you. For Locky it kickstarted his career.

“The kindy kids are only young, but at this age these kids are sponges. In years to come, if you build that initial stepping stone strong it can grow into a journey of a lifetime. The minute you get outside, your happy face comes on, whatever the weather. For young ones it’s about trying to build the confidence to give things a go and the resilience to keep trying, keeping active, being healthy and doing things so that it strengthens their minds and helps their moods. It’s so good for



Blues lock Laghlán McWhannell. Photo supplied by The Blues.

mental health. Its a holistic approach. Ordinary kids and adults can achieve extraordinary things.”

Kawakawa Bay Kindergarten head teacher Lisa Carlin says kindergarten staff talk to children about keeping themselves fit and healthy.

“We’re keeping it basic and fun for our little ones, but they have cottoned onto it - they look at what’s in their lunchboxes and tell us what is healthy food. We do lots of exercising at mat times. We also do a lot of mindfulness, and if a child is getting frustrated during the day, we would encourage them to do some rhythmic movement like music or running, dancing or swinging on the swing. We understand the importance of movement.”



“The future belongs to those who believe in the beauty of their dreams.”  
- Eleanor Roosevelt -

**Easter Services: 9am**

Plus Kids’ Programme

Minister: Mark Chapman

For more information contact:  
Lyn 5366774, lyn.41buchanan@gmail.com

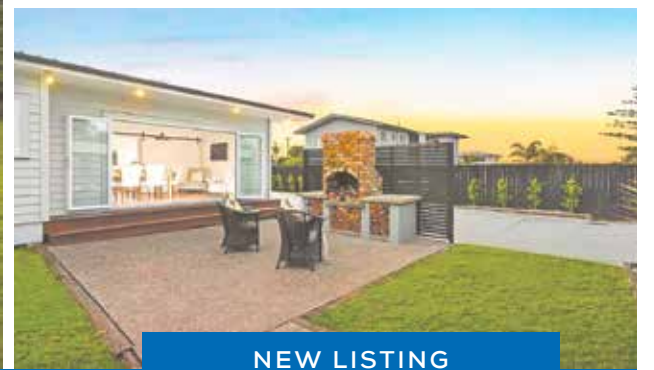
29 March Good Friday Service  
31 March Easter Sunday Celebration

Playgroup Tues & Wed 9am - 12pm

Food bank 027 304 4998 Phone or text

5 Jacobs Way, Maraetai

## BARFOOT & THOMPSON



NEW LISTING

## BEACHLANDS

95 SECOND VIEW AVENUE



### TENDER

4:00pm 3 Jul 2024 at 42 Wakelin Road, Beachlands (unless sold prior)

barfoot.co.nz/892865

### VIEWING

Open Home Sat 2:00-2:30  
Sun 2:00-2:30



Mike Deverell  
021 466 300  
m.deverell@barfoot.co.nz



Nadine Bryant  
021 265 7512  
n.bryant@barfoot.co.nz

## Renovated & Motivated

This stunning single-level home has been meticulously renovated to offer a seamless blend of modern comfort and relaxed coastal living. Fully double glazed on a quarter acre flat section, this property caters to both young families seeking spacious bedrooms and outdoor play areas, or buyers who appreciate single-level living with plenty of room for the boat or camper.

# Lifestyle

SPONSORED CONTENT

## Improve your home's wellbeing with help from HRV East Tamaki



Michael Chong, HRV East Auckland.

### - by HRV East Auckland

Our mission at HRV East Auckland, which has been under new management since 2018, is dedicated to helping the people of East Auckland improve the wellbeing of their homes. Since then that passion has grown and we continue to make it our goal to transform cold and damp homes, helping make them warmer, drier and more comfortable to live in. With over 500,000 homes in NZ using HRV we are the market leaders in total home solutions.

Condensation? Damp home? Crying windows? Mouldy walls? HRV East Auckland is a total home solutions company providing home ventilation, individual room or whole home heating/cooling options. This one-two punch helps protect your home by first drying

out the dampness in your home and then our bespoke heating and cooling solutions help give you a better quality of life all year round.

No roof cavity? No problem. HRV has a ventilation system to suit your home or minor dwelling.

Currently 1 in 7 children in NZ suffer from asthma, and while we don't claim to hold the cure, our products are endorsed by the Sensitive Choice programme which is dedicated to helping Kiwis breathe pure, clean, fresh air while reducing allergic reactions. Our partnership with Allergy NZ gives you more certainty that our products help reduce the effects of pollen, dust and hay fever triggers in your daily lives at home.

HRV is the winner of Trusted Brand Home Ventilation for 2022, 2023 and 2024.

We are locals, helping locals, and endorsing affiliates such as Pakuranga United Rugby Club, Auckland Cancer Society, Barnardos and I Am Hope Foundation. As part of our ongoing mission we are supporting the next generation to

live healthier and longer lives.

Ready to transform your home? Call us direct on 09 356 7547 or visit us at 739 Chapel Road, Dannemora. Mention you're looking for the "Perfect Deal" to unlock the real deal in Heat Retention and Ventilation with HRV.

## BARFOOT THOMPSON & Student Voice

### LOCAL STUDENTS' NEWS, VIEWS & LITERARY TALENT

This column features news, views and literary talents of students from Beachlands, Maraetai, Clevedon, Brookby, Hunua, Paparimu, Orere and Ardmore Schools.

One student featured each week will be presented with a certificate and a \$20 book voucher, thanks to Barfoot & Thompson's Beachlands and Whitford branches.



This week's voucher sponsored by Mike Deverell

I can see the colourful red, yellow, orange, purple, gold, pinkish and red leaves passing with the wind

I can hear the crunches of the crispy leaves and feel them swirling around my warm and toasty body

Smelling the cold air makes me think of the snow and the world coming down from the fluffy clouds

I can feel the soft crumbly and crunchy leaves beneath my feet

Tasting the hot chocolate and homemade delicious cookies makes my insides feel warm and safe

- by Mirka Warrington, Year 4, Maraetai Beach School



## NZ's most trusted ventilation 3 YEARS IN A ROW!

09 356 7547



hrv.co.nz

# Lifestyle

SPONSORED CONTENT

## Transform your retirement: personalised training with Dr Beverley Sweeten-Smith

- by ALLFIT personal trainer, Dr Beverley Sweeten-Smith

Eighteen months ago, I retired from my role as a medical doctor, and many asked about my next steps. My answer was clear: I have always been passionate about fitness and committed to enhancing health and well-being. Now, as a qualified personal trainer, I am thrilled to fulfil my long-standing dream of helping people improve their lives through lifestyle changes.

### From medical practice to personal training

During my 38-year medical career, I observed a wide range of physical abilities among my retired patients, noticing that their physical health greatly influenced the enjoyment and fulfilment of their retirement. Encouraging family and friends to join me on Great Walks and active adventures, I witnessed their transformation. They became more confident, eager to be outdoors, and ready to tackle new challenges. They thrived, and so did I.

### Expert training for seniors and those with medical conditions

Bringing my extensive medical experience to personal training, I focus on individuals in or approaching retirement and those with medical conditions. The benefits of exercise, especially when paired with good lifestyle choices, are well-documented. Improved health, management of chronic diseases, enhanced bone density, better balance, and increased mental well-being are just a few of the positives. Exercise also benefits those undergoing cancer treatments and can slow the progression of symptoms in neurological conditions such as Parkinson's disease.

### Personalised guidance for new exercisers

For those contemplating a healthier lifestyle but are new to exercise, apprehensive, or unsure where to start, I am here to guide you through the initial stages. My priority is ensuring you exercise safely and effectively within your current fitness and health levels. My goal is to keep you independently active, better equipped to handle health challenges, and enthusiastic about life's possibilities.

**DR BEVERLEY SWEETEN-SMITH**  
PERSONAL TRAINER

**SPECIAL AREAS OF INTEREST:**

- // FUNCTIONAL MOVEMENT FOR MATURITY
- // EXERCISE AND LIFESTYLE CHANGES APPROPRIATE TO CHRONIC DISEASES
- // MAINTENANCE OF MUSCLE AND BONE DENSITY FOR MATURITY
- // FUNCTIONAL STRENGTH, BALANCE AND COORDINATION TRAINING
- // PELVIC FLOOR PRESERVATION AND ENHANCEMENT

**SPEAK TO RECEPTION OR EMAIL US NOW TO BOOK IN FOR A FREE PT CONSULTATION**

### Achieve your goals and enjoy retirement

Imagine the sense of fulfilment and pride when you achieve a goal you once thought was out of reach. Whether staying active in your daily life or tackling those bucket list activities, I will support and encourage you every step of the way. It is never too late to get stronger, be healthier, and achieve new goals. There is always time to become the best version of yourself.

### Ready to begin your journey?

I am here to help you enhance your fitness so you can fully enjoy your retirement. Call me on 027 536 7726 or contact ALLFIT on 0800ALLFIT for a FREE consultation and receive 20% OFF your first 8 training sessions! Together, we can make your retirement the healthiest and most enjoyable time of your life.

**\$5 OFF PER WEEK**

**YOUR FIRST 6 MONTHS**

**PLUS NO JOINING FEE**

**STAY OUT OF THE COLD AND TRAIN WITH US!**

**ENDS 30TH JUNE!**

**ALLFIT 24/7 FITNESS**

Terms & Conditions Apply

42A KOUKA ROAD, BEACHLANDS (NEXT TO COUNTDOWN) **WEB:** ALLFIT.CO.NZ **TEL:** 0800 ALLFIT (255348) **EMAIL:** BEACHLANDS@ALLFIT.CO.NZ



# Lifestyle

SPONSORED CONTENT

## Senior strides: community centre steps up fitness classes

- by Te Puru Community Centre

At Te Puru Community Centre, we're thrilled to announce an expanded lineup of invigorating fitness classes tailored specifically for seniors.

In addition to our beloved Wednesday and Friday sessions, embark on a revitalising journey with our new Senior Circuit Classes now offered every Monday at 9.00 am to complement with our existing classes on Wednesday and Friday mornings.

These dynamic workouts promise to energise your week and leave you feeling stronger than ever. Dive deeper into your wellness journey with our Pilates sessions led by the talented Judith, taking place every Thursday morning at the same time. Strengthen your core, improve flexibility, and discover newfound vitality with each flowing movement.



And let's not forget our Senior Strength and Balance classes every Tuesday at 9.30 am, designed to enhance stability and coordination.

Join us at Te Puru Community Centre for a holistic wellness experience, where every class fosters a vibrant community and empowers you to embrace life to the fullest.



# HOLIDAY PROGRAMME



**JULY 2024**

Full Day 7.30 am to 6.00 pm: \$50  
Part Day 8.30 am to 3.30 pm: \$45

In-House Event: \$60  
Trip Day: \$65

**Monday 8th July**

**Gymnastics & Parkour**

Unleash your inner ninja warrior. Join us for a day of challenging our bodies and pushing ourselves outside their comfort zones. Dive, roll and jump your way into the Holidays with Coach Maddie and the Team.



**Tuesday 9th July**

**Parks, Parks, & More Parks.**

Visit some of the great parks the Pohutukawa coast has to offer. Morning tea at Omana Park, with Mags the local Park Ranger. Then we are off to The Pirate Park for Lunch enjoying ice blocks by the beach. Explore the bush, shore and beauty we are so lucky to live by. Kids are welcome to bring scooters (helmets are a must)



**Wednesday 10th July**

**Sports**

Today is all about sport! We will have a go at bowls, AFL, Beach sports, racket and net sports, Modified sports, mind sports and much more. Give running, rowing and biking ago in our indoor Triathlon course. Compete as a team or as an individual. This day provides something for everyone even if sport isn't your favourite thing to do.



**Thursday 11th July**

**Maritime Museum & Sailing**

There will be a ratio of 1:5 on this day. limited spaces available\* Always wanted to see what it would feel like to sail the seas? Join us for a day of everything Maritime. Catch the ferry into town to explore the Maritime Museum. Board the Ted Ashby Heritage sailing boat and help hoist the sails and enjoy the sites of the beautiful harbour.

**Friday 12th July**

**Master Chef**

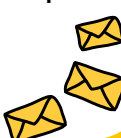
Who will be Te Puru's Master Chef 2024?? Older kids will compete in the 2024 master chef cook off where they will have to cook two different recipes and present them to the judges. Younger kids will learn to bake and make simple recipes they could make for their families at home



**Monday 15th July**

**Amazing Race**

Race around Te Puru answering questions and completing challenge while competing against other teams. Will your team be able to complete all the detours to win the race?? Come and get amongst the competition



**Tuesday 16th July**

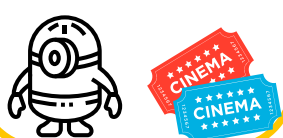
**Nano Girl & Scientific Engineering**

Whose bridge is the strongest? whose egg will survive the fall? Get ready to design, build and test your ability to design safe housing for an egg and a bridge that can hold some heavy weight. We have Nano girl coming to perform bubble experiments with everyone getting the chance to stand inside a giant bubble.

**Wednesday 17th July**

**Movie Trip Day**

Sit back relax and enjoy some popcorn and movie. Travel to Monterey Cinema in Howick and watch Despicable Me 4 in your own private theater. Then spend the afternoon creating back at Te Puru.



**Thursday 18th July**

**Screen Painting & Nerf Wars**

Have a go at creating your own clothing brand! Design a cool logo then print it using fabric paint onto any piece of clothing you like. BYO clothes, Print a t-shirt for the whole family. Put the paint down & pick up a nerf gun for an afternoon of nerf gun battles. Play games like capture the flag and go home stay home nerf gun style.

**Friday 19th July**

**Olympics**

Come and celebrate the upcoming Olympic games with our Te Puru Games. Choose a country and compete to win medals throughout the day. Which Country will come out on top?



For More Information Contact: [Sport@tepuru.co.nz](mailto:Sport@tepuru.co.nz)

# UOA researchers ask Coasters to take part in St John ambulance study

Local researcher Dr Tess Moeke-Maxwell (Ngāi Tai ki Tāmaki) is calling for Coasters to help with a University of Auckland study which examines the experiences of families who are present during a death in the community where the ambulance responds.



Every year, New Zealand ambulance services respond to over 5000 deaths in the community. Family are often present during these events, and providing care to them is an important role of paramedics. Tess Moeke-Maxwell and fellow researcher Eillish Satchell, in conjunction with Hato Hone St John, are conducting research exploring the experiences of families who are present during a death in the community where the ambulance responds.

may cry or get angry. These are all normal reactions to a sudden and painful event.

The study provides an important opportunity for bereaved family members to share their experiences of these events. The aim of the research is to identify ways ambulance services can help families navigate their way through this type of crisis.

Tess has dedicated her career to researching Māori experiences of end-of-life care. She says she knows how important it is that whānau get the support they need when a whānau member dies suddenly. Whānau are often in shock and they will experience this in different ways; some may become very quiet and find it difficult to make decisions while others

The study is looking for any family or whānau to share their experiences of these events. If you or anyone you know is interested, please get in contact with Eillish Satchell, [Eillish.satchell@auckland.ac.nz](mailto:Eillish.satchell@auckland.ac.nz), ph 0800 191 061.



MEDICAL AND HEALTH SCIENCES

Ambulance services respond to over 5000 deaths every year

Do you or your family have a story?



Researchers at the University of Auckland are looking for participants to share their stories in our study *Emergency Ambulance Care in Out-Of-Hospital Deaths: Whānau Experiences.*

Who can participate?

We are looking for people who have experienced the death of a family member in the community where the ambulance responded.

What will I need to do?

You are invited to take part in one interview with a researcher and share your story.

You will be offered a \$50 voucher for your time participating in this study

For more information about this study please contact:

✉ [eillish.satchell@auckland.ac.nz](mailto:eillish.satchell@auckland.ac.nz) ☎ 0800 191 016

Approved by the Auckland Health Research Ethics Committee on 3/4/24 for three years. Reference number AH27360.

## PŌHUTUKAWA LANDING

# Wellness Expo & Open Day

Join us at our **Wellness Expo & Open Day on Friday 21 June, from 10am–2pm.** Featuring a range of exhibitors and advisors, the expo will offer information on available medical services, mobility support, and financial protection. Whilst you're visiting, take a tour of our vibrant village.

- **Find a village that feels like home**  
 Call sales on 0800 600 701  
[joanne.roberts@metlifecare.co.nz](mailto:joanne.roberts@metlifecare.co.nz)  
 3 Seventh View Avenue, Beachlands  
[pohutukawalanding.co.nz](http://pohutukawalanding.co.nz)



metlifecare

### Features and facilities

Premium retirement lifestyle within a relaxed, coastal setting

Wellness Centre including indoor heated swimming pool, spa, gym and hair salon

Games room, library and lounge with fireplace

Café, bar and indoor and outdoor dining areas

Pavilion, pétanque terrain and village gardens



With a range of sizes, layouts, and outlooks there is something for everyone. Come and experience it for yourself!

**Apartments from \$700,000\***

\* Price is for an Occupation Right Agreement secured by a first ranking mortgage in favour of the statutory supervisor on behalf of the residents. Price valid for 30 days from time of printing. Stock availability subject to change. Car park not included in price unless indicated. Product images are indicative only.

# SPORTS

## Beachlands Maraetai Football Club



RESULTS FROM 15-16 JUNE

**White U9** v Bucklands Beach AFC Blue U9 no result submitted  
**Black U9** v Lynn-Avon United AFC Cobras U9 no result submitted  
**Blue U9** v Western Springs AFC Porto U9 **POD** Leo McLean-Suzuki  
**Black U10** v Bay Olympic FC Soccer Stars U10 **POD** Owen  
**Blue U10** v Fencibles United AFC Hedgehogs U10 **POD** Archer McDonald  
**Blue U10G** v Fencibles United AFC Red U10G **POD** Livvy Coleman  
**White U10** v Bay Olympic FC Corvettes U10 **POD** Za McPhillips  
**Blue U11** v Metro FC WYNRS U11 game cancelled  
**White U11** v Bay Olympic FC Leopards U11 **POD** Matthew Slabber  
**Black U12** v Bay Olympic FC Snappers U12 **POD** Oliver  
**Blue U12** v Bay Olympic FC Morays U12 **POD** Billy Rapley  
**Blue U13** v Bucklands Beach AFC Navy 9-0 **POD** Charlie Keily  
**U14G** v Fencibles United AFC Navy U14G/2 6-2 **POD** Isla Tutt  
**Rebels U15G** defaulted to Northland FC U15G  
**Blue U15** v Onehunga Sports FC Assassins U15 7-5 **POD** Oliver Wood  
**Atletico Beach** v South Auckland Rangers AFC Tivoro 2-2 **POD** Connor Stewart  
**Coasters M40/4** v Onehunga Sports FC Hunga M40 2-8 **POD** The Legionnaires  
**Legionnaires M40/3** v Eastern Suburbs AFC Shambles M40/2 postponed  
**Lions M45** Default win Fencibles United AFC Diggas M45  
**Rebels M40/4** v Waiuku AFC M40/5 no result submitted  
**U23** v Northland FC U23 no result submitted  
**NRFL2** v Northland FC no result submitted  
**WCL** v Bucklands Beach WCL no result submitted

## Beachlands Maraetai Junior Rugby



RESULTS FROM 15 JUNE

**Y1 Navy** v Karaka White **POD** Asher Gemmell, **ROD** Viggo Mills  
**Y5 BMRC** v ONEWHERE 70-15 **POD** Ayden Tarboton, **TOD** Liam Maritz  
**U13-Y8 BMRC Navy** v Onewhero 40/52m **POD** Willem Skinner, **TOD** Grayson Currie  
**Y7 Navy** v Bombay 21/80 **POD** Owen Thornton, **TOD** Leander Beukes  
**Y6 Navy** v Onewhero 35/60 **POD** Oskar Lawrence, **TOD** Julian Li  
**Year 5/6 U11 Girls Ripa** v Auckland University 49/60 **POD** Brooklyn York, **ROD** Madeleine White, **OPOD** Ava Houareau  
**U13 Orange** v Tuakau 121/0 **POD** Corey Gibson, **TOD** Lewis Aumatangi  
**U9 Girls Ripper** v Papatotou 55/70 **POD** Lexie Anderson, **ROD** Isla Hammond  
**Y2 Mako Orange** v Ardmere Marist Green 14/16 **POD** Kaylee-Anne Du Plooy, **ROD** E'Maza Maropai  
**U11/Y6 Y6 Orange** v Waiuku Red 50/80 **POD** Cian, **TOD** Danny from Navy Team  
**Y1 Orange** v Y1 Ardmere Red 16-17 **POD** Cohen Dromgool, **ROD** John Koloamatangi, **TOD** Atlas King  
**Y2 Navy** v Ardmere White 65-50 **POD** Orion Davis, **ROD** Brynn Colenso  
**Y5 Orange** v Manurewa 75 - 10 **POD** Ethan Cherrington, **TOD** Kayde Royal  
**U13 Girls Ripper** v Leopards 16-8 **POD** Stella Baptista, **ROD** Addison Belle  
**Y4/U9 Team** v Bombay 120/5 **POD** Riley Thornton, **TOD** Charlie Richmond



## Pohutukawa Coast Netball Club



RESULTS FROM 15 JUNE

**Premier** vs Shelly Park S1 Loss by default  
**Hihī** vs Pakuranga Senior Ruby 25-33  
**Falcons** vs Mellons Bay S4 40-23 **POD** Shannon Bridge  
**Wekas** vs Sunnyhills S5 24-22 **POD** Robyn Oliver  
**Pukekos** vs Monster Boot Camp S2 25-21  
**Kererus** vs Wakaaranga S4 40-7  
**C1** vs Mellons Bay C3 23-19 **POD** Rosie Currathers  
**C2** vs Mellons Bay C6 16-19 **POD** Michaela Clark  
**J1** vs Mellons Bay J2 32-7 **POD** Aria Norris  
**J2** vs CBNC J1 10-30 **POD** Maddie  
**J3** vs Howick Opal 10-27 **POD** Hazel McDonald  
**J4** vs Monster Boot Camp J4 5-8 **POD** Blayke  
**J5** vs Sunnyhills Nikau 5-13 **POD** Maisy Russell  
**Fantails** - **POD** the whole team  
**Tuis** - **POD** Imogen  
**Keas** - **POD** Emilia Meszaros  
**Silvereyes** - **POD** Isla Donnison  
**Kiwis** - **POD** Ayla & Sammy



Above: Fantails

## Clevedon Football Club



RESULTS FROM 15 JUNE

**Chiefs U9** v Tuakau SC Terminators - **POD** Leo Pilkington, **Merit Award** Indie Waters  
**Cyclones U10** v Pukekohe AFC Kereru - **POD** Fletcher Nicholson, **Merit Award** Harley Allen  
**Colts U11** v Manurewa AFC Tigers - **POD** Vos Gibbard, **Merit Award** Nik Watson  
**Cheetas U12** v Waiuku AFC Hawks - **POD** Aaryan Singh, **Merit Award** Jasper White  
**Cobras U13** v Drury UFC Volcanoes - **POD** Hunter Murdoch, **Merit Award** Jack Dufty



Above: Chiefs U9 Indie Waters and Leo Pilkington



Above: Cobras U13 Jack Dufty & Hunter Murdoch

**FOOD & ENTERTAINMENT GUIDE**

# Pomegranate, feta and tangelo salad recipe

It might be winter, but that doesn't mean salads have to be off the table! This dish is delicious served alongside lamb.

**Ingredients:**

- 1 whole pomegranate, seeds removed (or a packet of pomegranate seeds)
- 2 tangelos or oranges, peeled and diced
- 150g feta, chopped
- 1/4 cup mint leaves, chopped
- 1/2 cucumber, diced
- 3-4 leaves of spinach and/or lettuce, finely chopped
- 100g pumpkin seeds
- 100g flaked almonds, toasted
- Juice of one lemon
- 1 tsp sumac
- 3 T extra virgin olive oil
- 1 tsp maple syrup

**Method:**

Mix fruit, vegetables, feta, mint, seeds and nuts in a medium sized bowl, reserving a handful of the pomegranate seeds and flaked almonds. In a small jar, combine lemon juice, sumac, olive oil and maple syrup. Shake well, and pour over salad. Garnish with reserved pomegranate seeds and flaked almonds. Serves 3-4 as a side dish. Make it go further by adding extra lettuce or spinach.



4 Traditional Pizzas and 4 Sides DELIVERED from \$59.90 ONLINE CODE 22861\* **Open: Sun-Thu 11am-9:30pm**  
 \*T&Cs apply. **Fri & Sat 11am-10pm**  
**Ph: 0800 30 40 50 or 09 951 3959**  
 www.dominos.co.nz  
 E: beachlandsdom@gmail.com



**THE FRANKLIN**  
 TAPHOUSE & KITCHEN

**Open 7 days from 12pm-late**  
 Woodfired pizzas  
 Fri/Sat/Sun 12pm-late

**BOOKINGS RECOMMENDED**  
**Ph: 536 5978**  
 www.thefranklinpub.co.nz

**VINALTO**

**DINING • WEDDINGS • FUNCTIONS**  
 424 Creightons Rd, Clevedon, Auckland 2582  
 PH 09 292 8845 • enquiries@vinalto.co.nz

**OPEN: Thur and Fri 5pm - late**  
 Saturday 12pm - late, Sunday 12pm -4pm



**SUNKIST**  
 BAR • KITCHEN

**OPENING HOURS**  
 Tuesday - Thursday: 3-10pm  
 Friday - Sunday: 12pm till late

027 208 6942  
 190 Jack Lachlan, Pine Harbour

**Small sharing plates**  
**Cocktails**  
**Marina view**

**Ambrosia**

**(09) 536 4151**  
 Monday to Friday 10:00am - 11:00pm  
 Saturday & Sunday 8:00am - 11:00pm

**44 Third View Ave, Beachlands**  
 The best of European Cuisine

**BEACHLANDS CHARTERED CLUB**

Pohutukawa Coast's only not-for-profit Chartered Club since 1948

**Open 7 days a week**  
 Mon & Tues 4pm-Late  
 Weds-Sun 3pm-Late

**2 Weekly Membership Draws**  
 Fishing and 8 Ball Section  
 Fortnightly Quiz Nights  
 Free Pool & Darts  
 Kids Room  
 Gaming Lounge  
 Free\* Function Hire

**HALLERTAU CLEVEDON**

26 CLEVEDON-KAWAKAWA RD, CLEVEDON, AUCKLAND — CLEVEDON@HALLERTAU.CO.NZ — 09 869 2989  
 OPEN — MON & TUE: CLOSED — WED & THU: 4PM-10PM — FRI & SAT: 12PM-10PM — SUN: 11AM-9PM

**Pinocchio**

**OPENING HOURS**  
 Tuesday - Sunday: 5-9pm

For bookings or takeaway: 09 217 1684 | 021 2144790  
 44 Kouka Road, Beachlands

Instagram: pinocchionz Facebook: Pinocchio Pizza Pasta & more

**ADVERTISE IN OUR FOOD & ENTERTAINMENT GUIDE, JUST \$20/WEEK. EMAIL ADVERTISING@PCTIMES.CO.NZ**

# Community Calendar

Listings in our Community Calendar are free. Activities must be not-for-profit and have a community focus. For listings, email [info@pctimes.co.nz](mailto:info@pctimes.co.nz) - include activity, day of week, time, venue and contact details.

## Weekly events

### MONDAY

- **CASUAL BADMINTON:** 7.30-9pm, Te Puru Centre, \$7. Ph:536 5360.
- **ST JOHNS YOUTH:** 6-7.30pm, St Hilda's Church, Wakelin Road.
- **CASUAL TABLE TENNIS:** 7.30-9pm. Te Puru, \$7.
- **SOCIAL TENNIS:** Adults beginners/intermediate 7-9pm Te Puru. Stephen 021 217 7587.
- **KEAS:** scouts for ages 6-8 - 5:30-6:30 Te Puru Scout Hall, [tepuru@group.scouts.nz](mailto:tepuru@group.scouts.nz)
- **CUBS:** scouts for ages 8-11 - 5:30-6:30 Te Puru Scout Hall, [tepuru@group.scouts.nz](mailto:tepuru@group.scouts.nz)

### TUESDAY

- **COASTAL PLAYGROUP** 5 Jacobs Way, Maraetai. 9am-12pm. Bubs till 5 yrs. Sarah 022 082 6432.
- **KOKAKO VOLUNTEER DAY:** 8.15am-3.30pm, Northern Hunua Ranges. Ruth 021 950 915.
- **RUMMIKUB** 1-4pm, Te Puru Centre \$2. Bernadette 021 170 9350.
- **NATTER N STITCH** 12-3pm, Log Cabin, Sunkist Bay. Gill 021 204 6647
- **MARAETAI (LAWN) BOWLING CLUB:** 1pm, Te Pene Road. Tues, Thurs, Sat. Derek 536 4626.
- **CASUAL BADMINTON:** 9:30-11:30am, Te Puru Centre, FREE.
- **TABLE TENNIS** - 1:30pm-3:30pm, Te Puru Centre - Free
- **BASKETBALL:** All ages, Te Puru Centre. Email [pcbasketballclub@gmail.com](mailto:pcbasketballclub@gmail.com). 027 775 5320.
- **MEN'S AND INTERMEDIATE/ADVANCED LADIES TENNIS:** 7-9pm, Te Puru. Stephen 021 217 7587
- **HOUSIE/BINGO** 7.30pm, Beachlands Chartered Club, \$15. Ph: 536 6233.
- **POHUTUKAWA COAST CHILDREN'S CHOIR:** For primary school ages, 3.30pm - 5pm, at Ray White 'The Shed', contact Rhianon 0212160224.
- **POHUTUKAWA COAST YOUTH CHOIR:** For intermediate and high school ages, 5.15pm - 6.30pm, at Ray White 'The Shed', contact Rhianon 0212160224
- **POHUTUKAWA COAST COMMUNITY CHOIR:** 7.15 - 8.45pm. [coastchoir.com](http://coastchoir.com)
- **THE GOOD KNIGHTS SOCIAL CHESS** 7:00 - 8:30pm. Beachlands Baptist Church, 59 Third View Ave. Runs fortnightly (usually 1st & 3rd Tues of the month). All ages and skill levels welcome. Contact 022 656 1154 for more info.
- **U3A BEACHLANDS-MARAETAI** Fourth Tuesday of each month, 10am at Presbyterian Church, Jacobs Way, Maraetai. Monthly speakers, plus special interest groups. Brenda 021 777 171.

### WEDNESDAY

- **JP SERVICE:** 5.00-6.30pm, Beachlands Library.
- **COASTAL MAINLY MUSIC** 9am-12pm, for 0-5yrs, 5 Jacobs Way, Maraetai. Sarah 022 082 6432.
- **SENIOR CIRCUIT:** 9am \$6 Te Puru Centre. First Wednesday of the month BYO plate for coffee after.
- **CASUAL BADMINTON:** 10am-12pm, Te Puru Centre. All welcome. FREE.
- **SENIOR STRETCH & STRENGTH:** 9-10am, Beachlands Memorial Hall, \$12 per month (8 sessions).
- **PEST CONTROL DAY:** Southern Hunua Ranges, Ruth 021 950 915.
- **MASTERS SWIMMING:** Wed/Sat, carpool from Bchlds-Mtai. [president@manukaumasters.co.nz](mailto:president@manukaumasters.co.nz).
- **"CREATIVE WINGS" ART FOR SENIORS:** 10am-12pm, St Hilda's Church, Beachlands.
- **CLEVEDON FIRESIDE BRIDGE CLUB:** 10.15am, Clevedon Anglican. Lessons avail. Pauline 299 7433.
- **SCOTTISH COUNTRY DANCE CLUB:** 7.30-9.30pm, Hillpark Primary School Hall. Heather 267 6375.
- **MAHJONG:** 10am-12pm, Te Puru, \$2.
- **QUIZ NIGHT:** 7.30pm. Teams of up to 6, \$5pp Every second week Beachlands Chartered Club 536 6233
- **BADMINTON GAMES:** 8pm, Clevedon Hall, BYO racquet, shuttlecocks provided, \$3. Rebecca 021 1109 675
- **WORN AGAIN OP SHOP,** 9.30am-12pm, The Cottage, 5 K Bay-Orere Rd, Kawakawa Bay.
- **COASTAL TREASURES** Open Wednesday - Saturday, 10am-4pm, 41 Third View Ave, Beachlands. Donations welcome Monday, Wednesday and Saturday before 7pm at 25 Liberty Crescent (unless raining) or phone Tania on 021 644 722 for appointment.

### THURSDAY

- **MAINLY MUSIC.** 9.30am, Beachlands Baptist. Morning tea provided. 021 385 535.
- **GENTLE EXERCISE FUN & FRIENDSHIP FOR SENIORS 65YRS+:** \$5 per session 10am-12.00pm St Hilda's Church Hall, Wakelin Road, Beachlands. Contact Christine Bruinsma 021 133 5283.
- **LINE DANCING:** 10-11am, Beachlands Hall. Karen 021 213 6020.
- **TOY LIBRARY:** 10am-12pm, 59 Third View Ave. Can view & reserve toys online. Contact Betty Wilkings 021 492 325.
- **SCOUTS - AGES 11-15 - 6:30-8:30** Te Puru Scout Hall, [tepuru@group.scouts.nz](mailto:tepuru@group.scouts.nz).
- **TWICE LOVED OP SHOP:** Open 10am-3pm, 104 Maraetai Drive, Maraetai.
- **S.A.Y.G.O. "STEADY AS YOU GO"** Balance and coordination class. 10.30am. Kawakawa Bay Hall. \$2 Fee for Hall Hire and donations to Age Concern and Community. Friendly, gentle exercises. Contact 0210557370 Barbara Long.
- **COASTAL UKES (UKELLE CLUB)** 1:30 - 2:30pm, at Log Cabin, contact Val 027 393 4999 or Jean 021 023 09043.
- **261 FEARLESS - SOCIAL WOMEN'S RUNNING GROUP:** 10.15-11.15, all ages and abilities welcome. Te Puru Sports Fields by the playground.

### FRIDAY

- **SENIOR CIRCUIT:** 10-11am Te Puru Centre, \$7 casual, \$60 concession card (10 sessions) Ph 536 5360.
- **SENIOR STRETCH & STRENGTH:** 9-10am, Beachlands Memorial Hall, \$12 per month (8 sessions).
- **COTTAGE CAFE** 10am-12pm, K Bay, 1st and 3rd Fridays of each month, free coffee + food, company.
- **WORN AGAIN OP SHOP,** 9.30am-12pm, The Cottage, 5 K Bay-Orere Rd, Kawakawa Bay.
- **TWICE LOVED OP SHOP:** Open 10am-3pm, 104 Maraetai Drive, Maraetai.
- **COAST YOUTH:** 6:30-8:30pm, Beachlands Baptist Church, 59 Third View Ave. Anyone in intermediate or high school welcome. Contact Majella 021 079 3117 for more info.
- **CLEVEDON ART GROUP** Meets weekly on Fridays, 10am-12noon. McNicol Homestead. New members, beginners to experienced are very welcome. Phone Marian 027 296 3827.
- **FOODTOGETHER POP-UP SHOP** 2pm - 4pm, Beachlands Baptist Church, 59 Third View Ave. Grab a \$15 bag of seasonal, fresh fruit & veg at this community pop-up. We'd love to see you there. Pre-order at [foodtogether.co.nz](http://foodtogether.co.nz) or pop in to pick your own. Contact Meg 021 887 902 for more info.

### SATURDAY

- **WORN AGAIN OP SHOP,** 9.30am-12pm, The Cottage, 5 K Bay-Orere Rd, Kawakawa Bay.
- **TWICE LOVED OP SHOP:** Open 10am-3pm, 104 Maraetai Drive, Maraetai.
- **FREE YOGA CLASSES WITH MACA SALAS-PAMPALONI:** 8.15am-9.30am, Beachlands Chatered Club. Contact [alma.tribe.nz@gmail.com](mailto:alma.tribe.nz@gmail.com), 021 751 1760.

### SUNDAY

- **TOY LIBRARY:** 9-10am, 59 Third View Ave. Can view & reserve toys online. Contact Betty Wilkings 021 492 325.

## Other events and services

**OMANA STAMP CLUB** SECOND TUESDAY OF THE MONTH, 1.30pm at Maraetai Library. David 530 8869 / Graham 536 6958.

**POHUTUKAWA COAST TOASTMASTERS** 7-9PM EVERY SECOND WEDNESDAY

Sunkist Bay Boating Club. [pohutukawacoast@d112tm.org.nz](mailto:pohutukawacoast@d112tm.org.nz) or Michelle 0274 962 504.

**POHUTUKAWA COAST FRIENDSHIP CLUB** EVERY SECOND THURSDAY OF EACH MONTH - Formerly Probus. 10am - noon at Pohutukawa Coast Presbyterian Church, 5 Jacobs Way, Maraetai for morning tea and speaker. We promote friendship and fun for seniors. Contact Rhonda 021909724.



smile dental  
**Beachlands**

**We are open!**



## NEW PATIENTS WELCOME QUALITY AFFORDABLE FAMILY DENTISTRY

Smile Dental is New Zealand's largest dentist owned dental group with 17 modern innovative clinics in Auckland and Palmerston North.

- [Free Exam\* | Free ACC & Social welfare quotation |
- [Free adolescent dental care | White Fillings |
- [Crowns | Veneers | Dental Implants | Invisalign |
- [Wisdom tooth surgery | Botox & dermal Filler |

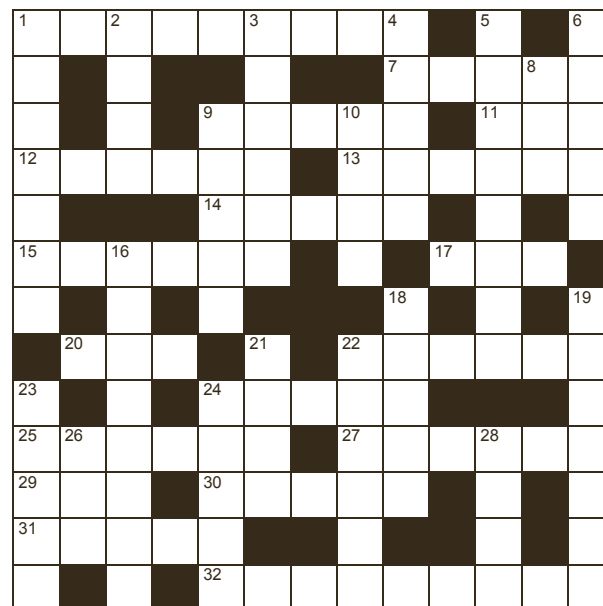
**FREE CHECKUP  
AND  
WINZ QUOTATION**

**Address:**  
129 Beachlands Rd,  
Beachlands  
Auckland

[www.smiledental.co.nz](http://www.smiledental.co.nz) 09 302 0808

[Albany | CBD | Henderson | Avondale | Te Atatu | Ranui | Remuera | Onehunga | Sylvia Park | Mangere | East Tamaki | Somerville | Beachlands | Manukau | Takapuna | Papakura | Palmerston North |

## RAYWHITE BEACHLANDS CROSSWORD



**Brianne Bignell**  
021 400 979

[brianne.bignell@raywhite.com](mailto:brianne.bignell@raywhite.com)

**RayWhite.**

### Across

- Mammal's nose (9)
- Clan (5)
- Pierce (5)
- Go down briefly (3)
- Informal opinion poll (3,3)
- Compassionate (6)
- Plagued (5)
- Bubble gently (6)
- Consumed (3)
- Mischievous child (3)
- Sleeveless coat (6)
- Mention (5)
- Deliberate and unprovoked (6)
- Shining (6)
- Scalp pest (3)
- Kingdom (5)
- Gush forth (5)
- General opinion (9)

### Down

- Stipulated condition (7)
- Semi precious agate (4)
- Late meal (6)
- Swagger (5)
- Instructive (8)
- Outcast (5)
- Container (3)
- Sombre (5)
- Utterance to clear the throat (4)
- Impetus (8)
- Assembly (5)
- Material within (7)
- Unit of heredity (4)
- Small compressed ball (6)
- Proprietor (5)
- Manipulates fraudulently (5)
- Broadcast (3)
- Brink (4)

Answers on page 14

# Classified Ads

# Professionals & Trades

## TO RENT

**SPACE TO RENT - 13 Papakura Clevedon Rd**  
above Remax Clevedon

Approx 25 sqm, shared lunchroom & toilet facilities. Nice Views. Currently used as a Bridal Studio. Space would suit a Hairdresser, Beauty Salon or professional. Call Geoff 027 479 7741.

## WORK WANTED

### CLEANING

Experienced, reliable and efficient. Available for one-off deep cleans, or weekly/fortnightly cleaning. Great rates and friendly team. Phone or text Corbyn's Cleaners 021 217 7436, or find us on Facebook.

### RENOVATIONS

Bathrooms, kitchens, toilets - build, tile, glass, flooring, plaster and paint. Start to finish. Exp. builder. Refs avail. Ph: Gary 021 90 30 20 or 536-6358. Oakes Build Landscape Maintenance. www.oakes.nz.

### MOWER AND CHAINSAW REPAIRS

All small engine repairs, mowers, ride-on mowers, chainsaws, weedtrimmers, & chain saw sharpening. No job too small. Free pick-up local area only. Ph: 536 5621 or mob 027 308 7777.

### PAINTING/PLASTERING

Interior and exterior quality painting. Refs available. Ph: Gary 021 90 30 20 or 536 6358.

### READY GRASS/ LANDSCAPING

Specialising in ready-grass, seeding, lawn levelling, turf cutting & landscaping. Locally based Ph: Adam on 022 015 2805.

### HANDYMAN

You name it... renovations, DVS installation, gardening, retaining, fencing, landscaping, trellis, light building and maintenance work. Ph Gary on 021 903 020 or 536 6358.

### BARCLAY MOWING

For all your mowing / gardening needs including lifestyle / large sections. Friendly professional service & great rates. Txt/Call 027 533 1527

# Professionals & Trades

## BOATING & MARINE



PROUD DEALERS OF **YANMAR**

UNIT 1C, 190 JACK LACHLAN DRIVE, PINE HARBOUR MARINA  
ALLISTER: 022 042 9349 | ALLISTER@MDSL.NET.NZ

**Ovlov Marine Pine Harbour** 09 536 5249  
www.ovlov.co.nz

Sales and Service of outboard motors, inboards, sterndrives and IPS.

Situated in Pine Harbour Marina and mobile we can care for your vessel be it big or small.

Contact the team on 536 5249 or email on phil@ovlov.co.nz for service enquiries and partsp@ovlov.co.nz for spare parts.

## BUILDERS



- NEW BUILD
- RENOVATIONS
- DECKS
- BATHROOMS

**FOR ALL YOUR BUILDING NEEDS**

Call Justin on: 021 460 011 justin@innovateconstruction.co.nz  
Licensed Building Practitioner www.innovateconstruction.co.nz

## CHIROPRACTOR



- Headaches / Migraine • Dizziness / Vertigo • Neck pain / Whiplash • Trapped nerves • Back pain / Sciatica
- Plantar fasciitis • Sports Injuries / Performance & more...

**David Owen DC | Registered Chiropractor**  
ACC Registered • 25 years experience  
02102 144 070 | clevedonchiro@gmail.com | www.clevedonchio.co.nz

## DENTAL

# Great Smiles. Better Health.

At Anthony Hunt Dental we are proud to have been serving our community since 2011.



Leading the way using the latest techniques and technology, we create great smiles and better health for the whole family.

(09) 292 9071 smile@ahdental.co.nz  
52 Papakura-Clevedon Road  
Clevedon  
www.ahdental.co.nz

**ANTHONY HUNT**  
Dental  
GREAT SMILES • BETTER HEALTH

## WHITFORD DENTAL

We are dedicated to your personal well-being through dental health



- Teeth whitening
- All ceramic tooth filling materials using CerecAC omnica, 3D technology
- Permanent tooth replacements with dental implants
- For gum health and maintenance call our hygienist Zahraa
- All aspects of general dentistry

**FREE DENTISTRY IS AVAILABLE FOR ALL YOUNG ADULTS**  
Eligible from Year 9 until their 18th birthday. Contact us today to learn more  
Evening appointments available  
Call us now on 530 8461 or email: info@whitforddental.co.nz

Dentists:  
• Dr. Rick Parfitt B.D.S • Dr. Alex Lindsay B.D.S  
• Dr. Maad Youhanna B.D.S  
Hygienist:  
• Zahraa Talib B.O.H

**09 530 8461**  
Whitford Village, Whitford



## INTEREST-FREE DENTAL PAYMENT PLANS

Book online: www.marinadentists.co.nz | 190 Jack Lachlan Drive, Beachlands  
Call us: 09 535 1074



**QUALITY AFFORDABLE FAMILY DENTISTRY**

**\*FREE dental examinations**  
\*excl. xrays

129 Beachlands Rd, Beachlands, Auckland

www.smiledental.co.nz 09 302 0808

## DRAINAGE & EARTHWORKS



**Drainage Vision Limited**

www.drainagevision.co.nz

Mike 027 593 0326

- Drain Unblocking • CCTV Inspections • Certified Drainlayer
- Vacuum Trucks • Pipe & Cable Locations

## ELECTRICIANS



No job too small - No job too big!  
Fast, reliable service.  
Qualified lighting designer

PH: 536-4076 FREE Quotes  
MOB: 021 769 964 www.pohutukawaelectrical.co.nz

## Auckland Wide Electrical

Ph 536 6800

Your Local Registered Electricians



- Heat Pump /Aircon Installations
- Switchboard Upgrades & Rewiring
- TV Cabling and Aerial Installations
- New House Wiring and Renovations
- Water pumps • Hot Water
- Oven Repairs • Lighting and Switchgear

www.awe.co.nz • help@awe.co.nz • free quotes  
Providing electrical services on the Pohutukawa Coast & throughout Auckland

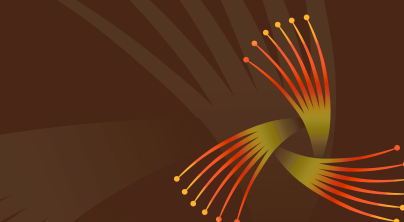


## AUCKLAND ELECTRICAL & PUMPS

- All Electrical Services
- Water Pump & Bore Pump Repairs & Installation
- Residential, Rural & Commercial Services
- New House Wiring/Rewiring & Renovations
- Filter & UV Light Replacement

PHONE: 027 474 1579 | 09 536 4074  
admin@aeps.co.nz

## LAWNS & LANDSCAPING



**coastal landscapes**

DESIGN BUILD PLANT MAINTAIN

www.coastallandscapes.co.nz

coastal.landscapes@xtra.co.nz

09 536 5377 027 237 9172



**R & R Garden Services**

- We do the hard yards for you -

Email: randrgardenservice@gmail.com

Your local lawn and garden specialist  
Call Richie: 021917332

Qualified Landscape design and Implementation  
Call Roanne: 0272528183

## CROSSWORD ANSWERS

**Across:** 1. Proboscis, 7. Tribe, 9. Spear, 11. Dip, 12. Vox pop, 13. Humane, 14. Beset, 15. Simmer, 17. Ate, 20. Imp, 22. Poncho, 24. Refer, 25. Wanton, 27. Lucent, 29. Nit, 30. Realm, 31. Erupt, 32. Sentiment. **Down:** 1. Proviso, 2. Onyx, 3. Supper, 4. Strut, 5. Didactic, 6. Leper, 8. Bin, 9. Sober, 10. Ahem, 16. Momentum, 18. Forum, 19. Content, 21. Gene, 22. Pellet, 23. Owner, 24. Rorts, 26. Air, 28. Edge.

# Professionals & Trades

## MEAT SUPPLIER



- For all your homekill and hunting processing.
- Vacuum packing standard & delivery available.
- Qualified butchers, expert advice, friendly service.
- Sausages (gluten free available), bacon, salami, biersticks, biltong, smoking and curing.

**027 632 8979**  
 admin@meatworx.co.nz  
 www.meatworx.co.nz

## ROOFING



**MONIER ROOFING SPECIALIST, SUPPLIER & INSTALLER**

RE-ROOFING | NEW ROOFS | ROOF COATINGS  
 CONCRETE ROOF TILE SPECIALIST | CONCRETE TILE REPAIRS  
 GUTTER REPLACEMENT | INTERNAL GUTTER CONVERSION

**0800 766 350 | www.roofingnz.co.nz | info@roofingnz.co.nz**

## TYRES



**YOUR TRUE TYRE PROFESSIONAL ON THE COAST**

- Friendly Reliable Service
- Locally Owned & Operated
- Over 20 Years Experience
- For ALL Your Tyre Needs

Agricultural, Batteries, Car / Passenger, Earthmover, Mag & Tyre Packages, Puncture Repairs, Truck / Commercial, Wheel Balancing, 4WD / Off Road, 24/7 After-Hours Callout

Call Mike 021 901 034 | sales@tyreguard.co.nz | www.tyreguard.co.nz

## MECHANICAL REPAIRS



**WE ARE YOUR LOCAL, HONEST AND TRUSTED AUTOMOTIVE REPAIRER. POP DOWN AND SEE US. WE'LL LOOK AFTER YOU AND YOUR VEHICLE.**

- ALL MECHANICAL REPAIRS
- BRAKES
- AUTOMOTIVE AIRCON SERVICING
- WOF
- TYRES

**57 THIRD VIEW AVENUE, BEACHLANDS**  
**09 536 6664**

## SCAFFOLDING

QUALITY | RELIABLE | WHITFORD BASED | LAYHER SCAFFOLD SYSTEM



Contact Dylan 021 239 4276 | dtswrightscaffolding@gmail.com

## VETERINARY

**Franklin Vets Beachlands**

1/43 Kouka Road,  
 Pohutukawa Coast Shopping Centre  
 538 0010 • beachlands@fvs.co.nz  
 www.franklinvets.co.nz

**OPEN HOURS**  
 Mon-Friday 8am-6pm  
 Saturday 9am-3pm



## SHUTTLES/TRANSPORT

**Driving Miss Daisy Botany**



New Zealand's number 1 companion driving service  
 We can drive and accompany you to:  
 • Medical appointments • Airport drop off/pick ups  
 • Social activities • Grocery shopping  
 • Beauty/hair appointments

Total Mobility cards accepted. ACC approved provider.

To make a booking call today: Ph: (09) 534 7712 Mob: 021 174 9999  
 E: botany@drivingmissdaisy.co.nz www.drivingmissdaisy.co.nz

**POHUTUKAWA COAST VETS**

LOCALLY OWNED & OPERATED IN BEACHLANDS

Book an appointment  
**Ph: 09 320 1472**  
 Or book online  
**www.pcvets.co.nz**



reception@pcvets.co.nz | 43 Wakelin Rd, Beachlands

## MARAETAI AUTOMOTIVE

**All Makes & Models | All Types of Repairs**  
 Petrol - Diesel - European Vehicles - Loan Cars

- Servicing • WOF • Brakes • Clutches • Wheel Alignments
- Tyres • Transmission Services • Batteries • Welding
- Cambelts • CV Joints • Auto Electrical Repairs

131 Maraetai Drive, Maraetai  
**Ph: 536 6542**

ALL WORK GUARANTEED  
 HOURS: Mon - Fri: 8am-5pm

## SURVEYOR

**SURVEY PLUS**  
 LAND SURVEYING



Your local Pohutukawa Coast Surveyor

admin@surveyplus.co.nz | 020 4 SURVEY (020 4 787839)

## MORTGAGE ADVISERS

**Loan Market**

New Zealand's widest range of lenders, in one place.



Toni Dawson, Mortgage Adviser  
 027 646 9269  
 toni.dawson@loanmarket.co.nz  
 NZ Financial Services Group Limited (FSP286965)

Find out more at [adviser.loanmarket.co.nz/toni-dawson](http://adviser.loanmarket.co.nz/toni-dawson)

## TREE SERVICES

**CALL NATHAN 021 196 6509**

- CHIPPING
- LAND CLEARING
- HEDGE TRIMMING
- TREE PRUNING
- TREE REMOVAL
- STUMP GRINDING



FIND US ON FACEBOOK [coastalcutters@hotmail.com](https://www.facebook.com/coastalcutters)

## WATER

**Coastal PUREWATER LTD**

The highest quality water for all your household, property and commercial needs

Ask for our pure water by name

Manukau Quarries LP  
 885 Whitford-Maraetai Road, Beachlands | 09 2630220

## OPTOMETRISTS



**phone 534 8716**  
**www.howickoptometrists.co.nz**

**FRANKLIN WATER**  
 MAKING WATER WORK

Ph 0800 826 525  
 sales@franklinwater.co.nz  
 www.franklinwater.co.nz

Supply, Installation & Servicing of:

- Water Pumps, Filter Systems & UV Light Systems
- Tank Cleaning
- Replacement Filters
- Loan Pumps available on ALL House Pump Servicing & Repairs

Bores / Pumps / Tank Cleaning / Filtration Systems  
 Solar Pump Supply & Installation

## PLUMBING



**DYNAMO PLUMBING**  
 MAINTENANCE SPECIALIST

24 hours/7 days A WEEK • NZ CERTIFIED PLUMBER  
 LOCALLY OWNED & OPERATED

**0800 175 988**  
 office@dynamoplumbing.co.nz

**DS TREES LTD**

Land Clearing  
 Tree Maintenance  
 Tree removal  
 Stump Grinding  
 Hedge Care

**Phone Doug**  
 021537171 • 09 5378595  
 info@dstrees.co.nz  
 www.dstrees.co.nz

## Your Local Arborists

**JESSEP CONTRACTING**  
 TREE CARE & REMOVALS

Your problem is our specialty!

- Tree Care, fine pruning and removals
- Shelterbelt removals and chipping
- Palm cleaning and hedge trimming
- Hedge trimming
- Tree Light installations
- Small Hiab Lift and Shifts

CALL PHIL FOR A FREE QUOTE  
 022 607 4455  
 CHECK OUT [jessepcontracting.co.nz](http://jessepcontracting.co.nz)

## WARDROBE SUPPLIER



Wardrobes | Melteca & Wire Shelving | Sliding Doors  
 Linen Closets | Garage Storage | Free Measure & Quote

Sean: 0273 433 866 | sean@wardrobeworld.co.nz

# BUSINESS DIRECTORY

## ACCOUNTING SERVICES

Probiz Systems Ltd, Sharon Bramley 021 122 8059 OR 530 8036  
 Ian McLennan, CA www.iwm.co.nz 536 6715  
 Diane Myers CA, diane@myersca.co.nz 292 9470  
 Business Allsorts, MYOB & Xero Experts 536 5850  
 Peat Johnson Murray 869 2091  
 Giles & Liew, gilesandliew.co.nz 262 1955

## AERIALS, TV & HOME THEATRE

Auckland Wide Electrical 536 6800, 021 998 665

## AGGREGATES

Beachlands Mitre 10 536 6567

## ALUMINUM WINDOWS

www.windowrenovations.co.nz  
 Repairs and Replacements 021 297 2320

## APPLIANCE SERVICING

Axial appliance servicing Service@axial.co.nz 573 0877  
 Appliance Wizard Ltd Ph Paul 0275 784 226

## ARCHITECTS

Peter Diprose www.diprose.co.nz 530 9065 or 021 125 1498

## ARCHITECTURAL PLAN & DESIGN

Ross J Willoughby 530 9358  
 RBG Ltd 027 260 8005

## AUTO ELECTRICIAN

Mobile Auto & Marine 0800 662 352

## BARBERS

Joe's Barbershop 536 7265

## BEAUTY

Xtreme Beauty & Barbers 600 2325 or 021 992 686  
 www.xtremebeauty.co.nz

## BED & BREAKFAST

Brookwood Lodge, Beachlands. 536 6975 or 0274 796 453

## BLIND SERVICES

Blindworks - For all New Blinds - Plus Blind Cleaning and Repairs  
 www.blindworks.co.nz 0800 999 229

Onsite blind cleaning & repairs - plus new blinds  
 info@onsiteblinds.co.nz 0508 253 262

## BOOKKEEPERS

Business Allsorts, MYOB & Xero Experts 536 5850

## BUILDERS

Bryant Builders Ltd 027 493 5507 or 027 692 8777  
 Horning Instincts Ltd, ph Gareth Price 021 618 181 or 536 6422  
 Michael Nootebos 536 6628 or 0274 799 776  
 Revamp Renovations Ltd 027 437 4896  
 Stehr Brothers Construction 021 939 008  
 Superior Builders, ph Neil 021 079 2589

## BUILDERS' SUPPLIES

Morton Timber Co. Clevedon 292 8656  
 Beachlands Mitre 10 536 6567

## CARPET CLEANING

Aladdin Carpets, Phone Michelle 09 537 4320

## CELEBRANT

Ceremonies by Diana, www.celebrantdiana.co.nz 021 152 9925

## CHAINSAW SALES/SERVICE/REPAIRS

Greenmount Mowers & Chainsaws 09 970 4816

## COMPUTER REPAIR

Wi-Fi & Internet, Home and Office IT Support  
 Call Graeme Thomas 027 429 0677

## CONCRETE SERVICES

Aaron Ross Concreting 0210 233 2673  
 We Lay Concrete Ltd. 021 038 1086  
 Murray Douglas Limited 027 498 5267

## COSTUME HIRE

Clevedon Costumes and Vintage Apparel 022 018 2711

## DENTISTS

Whitford Dental Group 530 8461  
 - Dr Rick Parfitt, Dr Alex Lindsay & Dr Susan Clow  
 - Hygienist - Shelley Chadwick & Zahraa Talib 530 8461  
 Anthony Hunt Dental Ltd, Dr Anthony Hunt, Clevedon 292 9071  
 Marina Dentists Pine Harbour 536 4361  
 Smile Dental Beachlands  
 - Your local dentist. New patients welcome. 022 8888 171  
 - Free examination since 1996 09 302 0808  
 www.smiledental.co.nz 0800 4 smile

## DIGGER & TRUCK HIRE

The Little Digger 027 278 0335 or 536 4424  
 Digger Landscapes www.diggerlandscapes.nz 021 415 832  
 Bizzy Bobcats & Diggers - call Mark 027 494 4414

## DOCTORS

Beachlands Medical Centre 536 6006

## DRAINLAYERS

Vibe Earthmovers and Drainage call Vincent 0272 225 377  
 Probuilt Earthworks Drainage call Gary 021 617 611  
 Drainage Vision Ltd call Mike Adams 027 593 0326  
 Certified drainlayer, CCTV inspections, drain unblocking

## EARLY CHILDHOOD EDUCATION

Whitford Early Learning Centre 530 8726  
 Clevedon Kidz Early Childhood Centre 292 8358

## EARTH MOVING CONTRACTORS

Riordan Contracting 09 530 9429 OR 027 430 9429  
 Stehr Brothers Civil Construction 021 939 008  
 Pohutukawa Coast Earthmoving, Grant 027 475 8468  
 www.brookbycontracting.co.nz Earthworks/Cartage/Drilling  
 027 530 9290

## ELECTRICIANS

Auckland Electrical & Pump Services 536 4074, 027 4741 579  
 Auckland Wide Electrical 536 6800, 021 998 665  
 Pohutukawa Electrical 536 4076, mob 021 769 964  
 Positive Electrical Services 021 801 606

## ENGINEERS - CIVIL/ENVIRONMENTAL/ STRUCTURAL

Fraser Thomas Ltd 278 7078

## FENCING CONTRACTORS

Craig McLeod 027 292 5844  
 White Fencing: 292 8064, 0274 957 868  
 - rural fencing, retaining walls www.whitefencing.co.nz

## FLOORING

Nicks Floor Sanding 536 6916, Mobile 021 875 456

## FLORISTS

Clevedon Flowers, www.clevedonflowers.co.nz 292 9540  
 Harbour Rose Florist - Wedding and Events 021 0243 5299

## FUNERAL DIRECTORS

Resthaven Funeral Services  
 Rachel Benns & Raewyn Proctor 533 7493, 267 2530  
 Ensom Funeral Services  
 John Ensom & Jo Nevin 299 6646 or 524 6765  
 Fountains Funeral Directors & Monumentalists -  
 Papakura, Franklin and Manurewa 298 2957  
 Howick Funeral Home Robert Johnstone - Mark Rowley 534 7300  
 Souly Funerals Beachlands 0800 47 68 59

## GARAGE DOORS

Repairs & Service, Metro Garage Doors 263 6608

## GARDEN CENTRE

Beachlands Mitre 10 536 6567

## GARDENING

Rosie's Gardening Service 021 0233 5998

## GEOTECHNICAL SERVICES

Fraser Thomas Ltd 278 7078

## GIBSTOPPING

Gib stopping & painting - Tony 0274 966 394 or 536 6477

## GLASS AND GLAZING

Manurewa Glass 266 7794  
 Howick Glass 535 4180

## GUTTER CLEANING

Skyhigh Roof and Gutter Cleaning Ltd  
 Website: www.skyhigh.nz 021 951 719

## HAIRDRESSING

Hair Do's @ Maraetai, ph Denise 0274 599 901  
 Cooper Hairdressing, 16 Te Pene Rd, Maraetai 027 329 1781

## HANDYMAN SERVICES

Local Handyman: 536 5050 or 021 156 7370  
 Oakes Build Landscape Maintenance, www.oakes.nz 021 903 020

## HEAT PUMPS

Positive Electrical Services 021 801 606  
 Auckland Wide Electrical 536 6800  
 AES - Auckland Energy Solutions  
 Website: www.aes.nz Phone: 09 575 1191

## HOUSE WASHING

BEST Property Services 021 366 615  
 Just Clean Me, Exterior Cleaning Services 022 089 2383  
 House washing, gutter cleaning, roof treatments, water blasting.

## JEWELLER

Paul Taylor Manufacturing Jewellers 536 4200  
 Repairs/Remodelling/Valuations/Insurance Replacements  
 Shop C/7, 129 Beachlands Rd, Pohutukawa Coast Shopping Centre

## KITCHENS

Kitchen Craft Ltd, Ph Warren 09 274 4221  
 for Sizzling Kitchen Design & Cabinetry www.kitchencraft.co.nz

## LANDSCAPING

Eastside Landscapes 021 484 158  
 Nicky Auld - landscape design, consultations 021 972 534

## LAUNDROMAT

Kiwi Laundry Co, www.kiwilaundryco.co.nz 022 463 8416  
 7 DAYS at GAS Maraetai, 131 Maraetai Drive, Maraetai 536 4218

## LAWNMOWING & GARDENING SERVICES

JIMS MOWING Beachlands - Frank 027 415 3657  
 Greenacres - Stephen Howe 292 4165 or 021 2266 753  
 Prolawns (Beachlands based) Shane 021 746 887  
 R&R Garden ServicesRichie: 021 917 332, Roanne: 027 252 8183  
 Coastal Gardener (Beachlands based) Darryl 022 360 3065

## LAWNMOWER SALES/SERVICE/REPAIRS

B'inds/M'tai mower/chainsaw repairs 536 5621 or 027 308 7777  
 Greenmount Mowers & Chainsaws 09 970 4816

## LEGAL SERVICES

Sutcliffe Matson Law 09 279 8351 or 021 327 030

## LOCKSMITHS

Local Locksmith - Tony 536 5050 or 021 156 7370  
 Armstrong Smarter Security 0800 506 111

## LPG SUPPLIERS

Matagas 0800 954 427

## MARINE AND BOATING

Ovlov Marine Pine Harbour LTD 536 5249

## MECHANICAL REPAIRS

Maraetai Automotive 536 6542  
 Pohutukawa Motors, 57 Third View Ave, Beachlands 536 6664  
 Garaway Autos 022 395 6185  
 Luke's Garage Ltd 09 218 6442 / 022 301 0412

## MIRRORS

Howick Glass 535 4180

## OUTBOARD REPAIRS/ MARINE ENGINEERING

Eastern Marine - Mercury Certified Service Centre - Outboards,  
 sterndrive, petrol & diesel. 536 6252

## PAINTERS & DECORATORS

East Auckland Painting Ltd 027 619 2619  
 specialtintings.co.nz We fix, stop, and paint 0800 54 64 64  
 Painta Property Services-Beachlands+Sth East Akl 021 101 6937  
 Interior / Exterior / Roof / Fences - mikegrubb@painta.co.nz  
 Paint, waterblasting, plaster, tidy up removal, 027 525 4024  
 aggregate sand delivery. Joel@insulape.co.nz

## PEST CONTROL

Coastal Pest Solutions (including rats, rabbits, possums, pest birds,  
 wasps & bees) 536 6020 or 0273 932 125  
 Professional Pest Control 536 6690 or 021 078 3622

## PET ACCOMMODATION

Fairfield Pet Lodge, Clevedon 027 222 0307  
 Pets at Whitford Spa and Stay (PAWSS) 530 8860

## PHARMACIES

Unichem Beachlands Pharmacy 536 6500, fx 536 6590

## PHYSIOTHERAPIST

Beachlands Physio beachlandsphysio.co.nz 09 222 4120

## PLASTERING SERVICES

Solid Plastering, Bruce Parsons 021 981 812

## PLUMBERS

Dynamo Plumbing 0800 175 988  
 BF Brown Plumbing & Drainlaying 0800 477 455

## PLUMBERS & GASFITTERS

Ashby Plumbing & Gas 292 2445 or 0272 553 499

## PROPERTY MANAGEMENT

Rent People Ltd 0800 426 580  
 Ray White Lighthouse Licensed Real Estate 536 7011  
 Barfoot & Thompson Beachlands 536 4990

## PUMP SALES & REPAIRS

Auckland Electrical & Pump Services 536 4074, 0274 741 579  
 Malmaks Water Shop 530 8872, 021 353 158  
 Allwater Pumps and Supplies Ltd 09 536 5444, 027 536 5444  
 Clevedon Pumps & Filtration 027 479 7741

## QUARRY

Manukau Quarries 263 0220

## QUANTITY SURVEYORS

Hope & Associates - Residential estimating specialist 021 882 312

## REAL ESTATE AGENTS

Barfoot & Thompson Beachlands 536 4990  
 Barfoot & Thompson Whitford 530 8292  
 RE/MAX Clevedon 292 8388  
 Ray White Lighthouse Licensed Real Estate 536 7011

## ROOF PAINTING SERVICES

Master Tradesman. Text details for fast service: 027 517 8494  
 Visit our website: www.5starroofpainting.co.nz

## ROOF SOFTWASHING

Skyhigh Roof and Gutter Cleaning Ltd  
 Website: www.skyhigh.nz 021 951 719

## ROOFING SERVICES

Alba Roofing 021 584 530  
 Roofing & Spouting NZ Ltd 021 766 260

## SCAFFOLDING

Scaffold Connect Ltd 021 235 5963 or 09 576 5879  
 DTS Wright Scaffolding Ltd 021 239 4276

## SECURITY SYSTEMS

ADS Security Ltd (alarms & monitoring) 536 6860  
 Armstrong Smarter Security and Alarms 09 274 0999

## SEPTIC TANK CLEANING

SST Services phone Rob 09 2947611 or 0274 967430

## STORAGE

Beachlands Self Storage 021 281 5355

## SURVEYORS - LAND

McInnes, Read & Lucas Ltd 298 7288  
 Fraser Thomas Ltd 278 7078  
 Churchill Land Development Services Ltd 273 4182  
 Survey Plus Ltd 020 4 SURVEY (020 4 787839)

## TAXIS/TRANSPORT/SHUTTLES

Coast Shuttle - local hire & airport trips 536 6488 or 0274 722 613  
 Omana Shuttles - Airport Transfers 536 5935  
 Driving Miss Daisy 09 534 7712 or 021 174 9999

## TILING

Wall & floor tiling & waterproofing, phone George 027 534 3741

## TRAVEL - INTERNATIONAL & DOMESTIC

Clevedon Travel Brokers chrisshyashby@ttb.co.nz 027 273 9701  
 Travelselect Beachlands call Mark or Sam 536 6730

## TREE SERVICES

Coastal Cutters - coastalcutters@hotmail.com 021 196 6509  
 Jessep Contracting - JessepContracting.co.nz 022 607 4455

## TRUCK & BOBCAT HIRE

Murray Douglas Limited 027 498 5267

## TYRES - SALES & SERVICE

Maraetai Automotive 536 6542  
 Pohutukawa Motors 536 6664  
 Tyre Guard - Mobile Tyre Service, Call Mike 021 901 034

## UPHOLSTERY & CANVAS

Eastern Cover Centre. Boat & Outdoor Furniture Covers 535 7524

## VALUERS - PROPERTY

Property Valuations Ltd, Papakura 299 7406

## VETERINARY SERVICES

Franklin Vets - Pohutukawa Coast Shopping Centre, 538 0010  
 Beachlands, Open: Mon-Fri: 8am-6pm Sat: 9am-3pm  
 Pohutukawa Coast Vets - 43 Wakelin Rd, Beachlands 320 1472  
 Open: Mon-Fri: 8am-6pm Sat: 9am-12pm

## VENTILATION

DVS Home Ventilation (Russell) 027 661 8120 / 0800 387 555

## WALLPAPERING

Lucy Cui 536 5899 or 021 174 8466

## WATER DELIVERY

Beachlands/Maraetai Water Supply 273 9763  
 Clevedon Water 292 8099  
 Whitford Water Supplies 530 8164  
 Maraetai Blue Ltd 536 6437, 027 536 6437  
 Carlton Haulage 0800 420 246  
 Coastal Water Cartage 0508 262 7825  
 WET AZZ - www.wetazz.co.nz 0800 WET AZZ (0800 938 299)  
 A Plus Water 021 0727 163  
 PROWATER - Support Local, Ph Shane/Sheridan 021 530 727

## WATER TANK CLEANING & REPAIRS

Maraetai Blue Tank Cleaning Call Jacob 021 029 84170  
 Clevedon Pumps & Filtration 027 479 7741

</