

# Pōhutukawa Coast Times

Issue  
1535

26 July 2024

## LOOK TO THE STARS IN THE EAST.

2024 AGENCY OF THE YEAR IN BEACHLANDS AND MARAETAI\*

Beachlands  
09 536 4990

Whitford  
09 530 8292

BARFOOT  
THOMPSON &  
LICENSED REAA 2008

\*As awarded by RateMyAgent based on customer satisfaction ratings and total number of reviews collected.



# Welcome

## CLARE DOWER

My family and I relocated to Beachlands 16 years ago on our return from the UK. I was brought up in Cornwall, England within walking distance of the beach and we wanted to bring our children up in a similar community friendly environment but with access to the City for more opportunities. Beachlands fit the bill perfectly.

A bit cliché but I truly am passionate about property, from the more modest to the mansions – they all have something to offer at different stages in life. I love enabling people to move forward with their plans – it truly is a privilege to be chosen to sell what is usually someone's largest asset. I'm excited to join the highly respected Special Agents 003 Team and look forward to meeting you at one of the Team's open homes, or out walking the dogs or even in the supermarket.

**CLARE DOWER**

021 206 6822

c.dower@barfoot.co.nz



**003<sup>rd</sup> LICENSED TO SELL**

Ian Boswell 027 285 9314   Jenny Chandler 0204 000 2564   Nicolette Hale 027 702 9157   Clare Dower 021 206 6822

BARFOOT & THOMPSON



**SPECIAL  
AGENTS  
003<sup>rd</sup>**



26 July 2024

## PJ Power: community rallies for Jammies in June



Cousins Piper (left) and Billie get behind Jammies in June with a pyjama day at Best-Start Shelly Bay.

Best-Start Shelly Bay says it was “overwhelmed with support” from the community during its recent Jammies for June collection.

More than 90 pairs of pyjamas were donated to the early childhood education centre.

Run by the Middlemore Foundation, “Jammies

for June” is a charitable initiative which focuses on collecting pyjamas for children in need during the winter months. The aim is to ensure that children from low-income families have warm sleepwear to keep them comfortable and healthy during the colder nights.

**INSIDE:** Channel your inner Chaser at Whitford Pony Club’s quiz night p3

Support Local feature p4-5

LICENSED TO SELL

Ian 027 285 9314  
Jenny 0204 000 2564  
Nicolette 027 702 9157  
Clare 021 206 6822

#1 Top Salesperson  
Beachlands Branch 2024

BARFOOT & THOMPSON

SPECIAL AGENTS  
003

We’re here for **you**  
and all your property  
management needs!

BARFOOT & THOMPSON  
PROPERTY MANAGEMENT

Beachlands  
09 536 4990

**RayWhite.**  
BEACHLANDS

Your Premium **Choice**  
in Property Management

Ray White Beachlands P : (09) 536 7011  
Lighthouse Real Estate Limited E : beachlands.nz@raywhite.com  
Licensed (REAA 2008) W : rwbeachlands.co.nz  
A : 81 Second View Avenue, Beachlands



Visit us  
226 North Road,  
Clevedon 2248  
Ph: 09 292 8656

Email: office@mortontimber.co.nz  
Web: www.mortontimber.co.nz  
Facebook: mortontimber.clevedon

### COAST TO COAST SPECIALS

#### UTILITY CLAD H3.2 PLY 12MM

2400X1200 \$70 each plus gst  
2700X1200 \$80 each plus gst

#### PREMIUM PINE DECKING

smooth 140X32  
\$8.50 per lineal metre plus gst

#### TONGUE & GROOVE H4

140X45 @ 6m lengths  
\$5.25 per lineal metre plus gst

OPENING HOURS  
MONDAY - THURSDAY 7:30AM TO 5:00PM  
FRIDAY 7:30AM TO 4:30PM & SATURDAY 7:30AM TO NOON

RayWhite.  
Second Generation Real Estate  
**EXPERIENCE** the difference...  
Ray White Beachlands P : (09) 536 7011 or (021) 400 979  
Lighthouse Real Estate Limited E : beachlands.nz@raywhite.com  
Licensed (REAA 2008) W : rwbeachlands.co.nz  
A : 81 Second View Avenue, Beachlands

**EmbroidMe.**  
East Tamaki  
We Supply & Brand  
Uniforms & Promotional Products  
Embroidery, Printing, Lettering, Dye Sublimation and more...  
Cnr Smales and Springs Rds, East Tamaki - 09 265 0300

**STIHL SHOP BOTANY**  
**FREE** Accessories  
With selected tools  
16(H) Bishop Dunn Place, Botany. 2163  
Phone 271 3000 www.stihlshopbotany.co.nz  
**OPEN 7 DAYS**

**Deadlines:** Display advertising - 5pm Thursday. Classified and News - midday Friday

advertising@pctimes.co.nz | www.pctimes.co.nz



# Pohutukawa Coast Times

## GET IN TOUCH

**E:** info@pctimes.co.nz  
**W:** www.pctimes.co.nz  
**F:** facebook.com/pctimes  
**A:** PO Box 5, Beachlands 2147

## EDITOR

**Leanne Chamberlin**  
 021 426 207  
 leanne@pctimes.co.nz

## ADVERTISING

**Melody Cutfield**  
 021 0261 4467  
 advertising@pctimes.co.nz

## CLASSIFIEDS

advertising@pctimes.co.nz

## DELIVERY/DISTRIBUTION

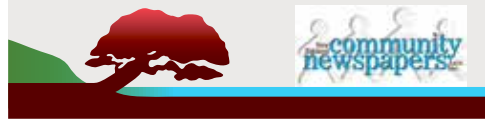
distribution@pctimes.co.nz

## ACCOUNTS

**Pam Rutherford**  
 accounts@pctimes.co.nz

The Pohutukawa Coast Times is distributed weekly to 6500 homes and businesses in: Whitford, Brookby, Beachlands, Maraetai, Clevedon, Ardmore, Alfriston, Kawakawa Bay, Orere Pt, Hunua, Paparimu

Member of the New Zealand Community Newspapers Association



**The PC Times 20 years ago:**  
 23 July 2004: New medical centre, pharmacy under construction on Wakelin Road, Beachlands.



## Weekly Tide Chart

26 Fri		4:45am ▼ 0.4m	11:04am ▲ 1.0m	
27 Sat		5:36am ▼ 0.5m	11:55am ▲ 3.3m	
28 Sun		12:24am ▲ 3.3m	6:29am ▼ 0.5m	
29 Mon		1:18am ▲ 3.2m	7:23am ▼ 0.6m	
30 Tue		2:14am ▲ 3.1m	8:20am ▼ 0.7m	
31 Wed		3:13am ▲ 3.0m	9:21am ▼ 0.7m	
1 Thu		4:13am ▲ 3.0m	10:22am ▼ 0.8m	

MARINE FORECAST – VHF CHANNEL 19  
 AUCKLAND FORECAST – 0900 999+ YOUR STD

**Pine Harbour Electrical**  
 Unit 1A Pine Harbour Marina  
 P: 536-6177  
 W: www.phe.co.nz

# Guest editorial by Clevedon Community & Business Association

## Clevedon Village Design Framework – capturing a community’s voice in the changing face of Clevedon

Anyone who has regularly travelled through Clevedon village over the years will undoubtedly have noticed our rural village is changing. New residential developments are underway at Conmara and Clevedon Meadows, and Metlifecare’s new Ōtau Ridge village is taking shape along Clevedon Kawakawa Road. The growth and development is plain to see, but behind the clear physical signs of change – new roads, new footpaths, new roadside planting – is a decades-long story of community consultation, engagement, and advocacy. The Clevedon Village Design Framework (CVDF) – a masterplan encapsulating the voice of the Clevedon community – was developed in response to community feedback and now informs both private and public investment in future projects and services.

### How it all began

For many years, (since last century!) the Clevedon community had been advocating for a “Plan” in the face of ad hoc development and the need for a solution to wastewater issues in the Village. Clevedon Cares, the Clevedon Business Association (CBA) and others were involved when Manukau District Council (MDC) eventually started the process in 2009 with extensive consultation on what people wanted for the village and surrounds. The MDC produced a draft Plan Change 32 for more consultation and then the final Clevedon Village Plan was agreed in 2015, with areas zoned for residential and commercial development - necessary to pay for reticulated wastewater. PC32 became the Clevedon Precinct in the Auckland Unitary Plan. It was at this point that the Design and Planning subcommittee was formed under the CBA as it was obvious that there was a Precinct Plan but no mechanism for implementation. The basis for the Clevedon Village Design Framework is the Clevedon Village Plan.

### Shaping a vision for the future of Clevedon – Clevedon Conversations

With the prospect of 1000 new homes

being built in the area, the then Clevedon Business Association (now Clevedon Community and Business Association) recognised that, if we were to strive for the best possible outcomes, widespread community participation in the design and planning process would be crucial. The Design and Planning subcommittee initiated a community consultation and engagement project to identify what great outcomes in Clevedon would look like. Led by Nicki Henshaw and Jane Masters, ‘Clevedon Conversations’ was launched in July 2015 to inform and consult the community on Clevedon’s future, as well as develop a process to identify what it is the community wanted the Clevedon of the future to look and feel like, and how it would operate.

No stone was left unturned in the consultation process – ideas were gathered through drop in sessions at the Clevedon District Centre, Open Days in the Main Street, boxes around the village with pads and pens for collecting ideas, and three presentations at the Clevedon District Centre for stakeholders. More than 1300 suggestions, comprising of 254 unique ideas were captured.

These were distilled into a clear, cohesive masterplan – the Clevedon Village Design Framework (CVDF). The CVDF sets out four key moves that will help guide Clevedon’s development away from ad-hoc, or ‘homogenous anywhere’ development – and help maintain and enhance our local character.

- Connect to the river
- Create a compact Village Centre
- Celebrate our rural historic character
- Consolidate the community heart

From these four key moves, more detailed design principles were developed – informing everything from planting and pathways, to village shop facades, and the location of different retail precincts. You can read more about these at <https://www.clevedon.co.nz/design-and-planning/>

### The Clevedon Village Design Framework – guiding the changing face of Clevedon

As we watch the progress of development around Clevedon Village, through the

CVDF we can see some of the ideas provided by our community almost a decade ago taking shape around us.

- Footpaths at Clevedon North (connecting the bridge back to the village) and Conmara (connecting Conmara South roundabout to the bridle trail along the Taitia Stream) provide connections to the river.
- The Warren Shaw Path (in partnership with Franklin Local Board and Stevensons) and the pedestrian gate to the A&P Showgrounds connect the community through trails and paths.
- The Clevedon Village Masterplan has been developed to help consolidate the community heart.
- The Auckland Transport Pedestrian Safety Study is an outcome of the CVDF – creating a compact, pedestrian-friendly village.
- The 40m planted buffer zone between Clevedon Papakura Road and new development projects at the southern approach to Clevedon are part of the Village Gateway Corridor which reflects our historic rural character.

### The conversations continue

Always on the lookout for new ways to keep the community informed and engaged, the Clevedon Community and Business Association (Clevedon CBA) recently launched the Wairoa Valley Business Breakfast series. The series kicked-off in June with a focus on growth and development in the Franklin area. Our next event, on Thursday 29 August will focus on the changing face of Clevedon and will provide more information about some of the development currently underway around the village. We’re delighted to have the support of Forsyth Barr as a sponsor for the breakfast series.

If you’re interested in learning more about the Clevedon CBA and the work we do, visit <https://www.clevedon.co.nz/clevedon-cba/> and consider joining us at our AGM on Friday 9 August, 12.00pm at the Clevedon District Centre (at the North Rd/ Clevedon Kawakawa Rd roundabout). If you’re interested in attending please RSVP to [secretary@clevedon.co.nz](mailto:secretary@clevedon.co.nz)

**SUTCLIFFE MATSON**  
LAW

**LAWYERS SERVING THE POHUTUKAWA COAST**

38A Wakelin Road, Beachlands  
 Available Monday - Friday, by appointment

Conveyancing, Refinancing, Wills,  
 Powers of Attorney, Business Transactions  
 Family & Commercial Law  
 and other general legal needs.

We are happy to meet after hours  
 at your home for your convenience.

Ph: 09 279 8351 or Braden: 021 327 030  
[braden@smlaw.net.nz](mailto:braden@smlaw.net.nz) | [breanna@smlaw.net.nz](mailto:breanna@smlaw.net.nz)  
[www.sutcliffematsonlaw.net.nz](http://www.sutcliffematsonlaw.net.nz)

**St Hilda’s and St. Mark’s**  
**Anglican Church**  
 3 Wakelin Rd, Beachlands

**SERVICE**  
 Sunday 9:30am

All Welcome

**PRIMA**  
 COLLISION REPAIRS

**Complete panelbeating and car painting**

East Tamaki: Unit B 154 Harris Rd, East Tamaki, Auckland 09 274 4778  
 Manukau: 2/117 Kerrs Rd, Manukau, Auckland 09 268 9340



# Channel your inner Chaser at Whitford Pony Club's quiz night!

Whitford Pony Club's grounds have enjoyed an upgrade recently, and now the club is organising a fundraising quiz night to help contribute to the cost of new arena surfacing and track repairs.

Pony Club spokesperson Denise Berry says that after a couple of years of Covid lockdowns when the club could not hold events, followed by the Auckland floods and Cyclone Gabrielle, the grounds were looking worse for wear.

"Our arena surfaces in particular were very worn and desperately needing replenishing," says Denise.

The Whitford Community Charitable Trust came to the rescue with funding which enabled the club to engage Land Site Development Ltd to carry out the arena renovations and form an all weather track that riders can use to ride around the grounds.

"This has made such a huge difference to what we can offer our members. There is also benefit to local non members who can book to use our grounds," says Denise.

The club is extending an open invitation to the community to attend a fundraising quiz night and auction at 7pm on Saturday 10 August at Whitford Park Golf Club.

"Our plan is to provide an opportunity for local clubs, friends and families to get together, socialise and have a fun evening during these cold winter months!" says Denise.



Whitford Pony Club's upcoming quiz night will raise funds to contribute to the club's new arena surface (above).

People can make up their own tables of 8 people, or the club can put individuals and smaller groups together to make up teams.

Snack platters will be provided on each table.

The theme will be Paris Olympics, with

dress up preferred but not compulsory. There will also be auctions, silent auctions, prizes and spot prizes, with many prizes donated by local businesses.

Denise says there will be something for everyone - not just horsey people!

Tickets are \$50 per person. Book by contacting Shirli [eventswpc@gmail.com](mailto:eventswpc@gmail.com). Payment can be made online.

The club is still seeking donated items or services for its auction, so if your business can help contact [eventswpc@gmail.com](mailto:eventswpc@gmail.com).

 **Pohutukawa Coast**  
PRESBYTERIAN CHURCH  
"A Voice of Positive Christianity"

"Your future starts today.  
Choose well."  
- Mark -

**Every Sunday 9am**  
Plus Kids' Programme  
**Minister: Mark Chapman**  
For more information contact Lyn:  
[lyn.41buchanan@gmail.com](mailto:lyn.41buchanan@gmail.com)

Playgroup Tues & Wed 9am - 12pm  
Food bank 027 304 4998 Phone or text  
**5 Jacobs Way, Maraetai**




**OUR LADY STAR OF THE SEA  
CATHOLIC PARISH**

We celebrate Mass at 4.30pm on the first Saturday of the month. On other Saturdays there will be Celebration of the Word with Holy Communion.

**St Hilda's Church,  
3 Wakelin Road, Beachlands**  
Visit our website for details  
[www.beachlandsc.com](http://www.beachlandsc.com)


**EAST AUCKLAND  
TOURISM**

**BUSINESS NETWORKING EVENT**



**How to market your business  
and drive sales in a tough economic climate!**

**Monday 29th July 2024, 6-8pm  
Lone Star, Botany Town Centre**

**GET YOUR TICKETS NOW >>** 

 **Howick**  
FUNERAL HOME  
New Zealand owned & operated since 1993

  
Robert Johnstone & Kevin Kelleher

**A privilege to care for your family**

Every life is special, we understand that. Let us pay tribute to the life of your loved one and celebrate the unique way they have touched you, your family and those around you.



For a personal, professional service contact us today to discuss your options:  
35 Wellington St, Howick | Phone 534 7300 | [www.howickfuneralhome.nz](http://www.howickfuneralhome.nz)



# Support Local!

SPONSORED CONTENT

## Tartar build-up in pets: check out Phina's dental transformation!

- by Franklin Vets

Phina the 9-year-old miniature dachshund came to our Pukekohe clinic to get her dental disease addressed. Despite the marked tartar buildup, most of the teeth were healthy and only 2 teeth needed to be removed due to bone loss.

Tartar build up on teeth causes gingivitis which is inflammation of the gums. This can lead to a pocket between the gum and the tooth where bacteria can accumulate. Over time this bacteria can cause loss of the supporting bone around the tooth causing the tooth to become loose and causing the animal pain. Also, the bacteria can spread via the bloodstream to other organs and has been associated with kidney, liver, and heart disease in animals, as well as dementia in humans.

Tartar is calcified plaque. Plaque is the bacterial biofilm that coats your

teeth, that fuzzy feeling you brush off in the morning. Controlling the plaque is the best way to stop tartar buildup and the best way to do this is to brush your pets' teeth like we brush ours every day. You need to use pet-safe

toothpaste as the fluoride content in human toothpaste is designed to be spat out. Fortunately, there are a variety of flavoured toothpastes available to make this experience a treat for your pet.

Franklin Vets has 20% OFF dental procedures in August so book your pet in now. And remember, our Vet Nurses offer FREE oral health checks all year round.



Phina



Before



After



BEACHLANDS  
MEDICAL CENTRE

PH: 536 6006

Mon 8.15-5.00 Tues 8.15-7.30

Wed 8.15-5.00 Thur 8.15-5.00

Fri 8.15-5.00 Sat/Sun CLOSED

No late nights during school holidays & closed statutory holidays. Hours may vary please check our Healthpoint website.

Book appointments online at [managemyhealth.co.nz](http://managemyhealth.co.nz)

**Doctors:**

- Dr Nigel Brown
- Dr Michael Clarke
- Dr Holger Konrad
- Dr Rowena Poole
- Dr Nikola Retford
- Dr Rebecca Starr
- Dr Andrew Reid
- Dr Nagham Hawa

**Other services:**

Psychiatrists, Counselling services



129A Beachlands Road, Beachlands  
POHUTUKAWA COAST SHOPPING CENTRE  
[www.beachlandsmedicalcentre.co.nz](http://www.beachlandsmedicalcentre.co.nz)



**20% OFF**  
**ALL DENTAL PROCEDURES\***

\*Discount applies to all procedures under anaesthetic. Offer ends 31st August 2024.



1/43 KOUKA RD, POHUTUKAWA COAST SHOPPING CENTRE  
PH 538 0010 | [BEACHLANDS@FVS.CO.NZ](mailto:BEACHLANDS@FVS.CO.NZ)  
 @FranklinVetsPets @FranklinVets  
 Book online @ [WWW.FRANKLINVETS.CO.NZ](http://WWW.FRANKLINVETS.CO.NZ)  
 Open hours: Mon-Fri 8am-6pm, Sat 9am-3pm



# Support Local!

SPONSORED CONTENT

## Improve your home's wellbeing with help from HRV East Tamaki



Michael Chong, HRV East Auckland.

- by HRV East Auckland

Our mission at HRV East Auckland, which has been under new management since 2018, is dedicated to helping the people of East Auckland improve the well being of their homes.

Since then that passion has grown and we continue to make it our goal to transform cold and damp homes, helping make them warmer, drier and more comfortable to live in. With over 500,000 homes in NZ using HRV we are the market leaders in total home

solutions.

Condensation? Damp home? Crying windows? Mouldy walls? HRV East Auckland is a total home solutions company providing home ventilation, individual room or whole home heating/cooling options. This one-two punch helps protect your home by first drying out the dampness in your home and then our bespoke heating and cooling solutions help give you a better quality of life all year round.

No roof cavity? No problem. HRV

has a ventilation system to suit your home or minor dwelling.

Currently 1 in 7 children in NZ suffer from asthma, and while we don't claim to hold the cure, our products are endorsed by the Sensitive Choice programme which is dedicated to helping Kiwis breathe pure, clean, fresh air while reducing allergic reactions. Our partnership with Allergy NZ gives you more certainty that our products help reduce the effects of pollen, dust and hay fever triggers in your daily lives at home.

HRV is the winner of Trusted Brand Home Ventilation for 2022, 2023 and 2024.

We are locals, helping locals, and endorsing affiliates such as Pakuranga United Rugby Club, Auckland Cancer Society, Barnardos and I Am Hope Foundation. As part of our ongoing mission we are supporting the next generation to live healthier and longer lives.

Ready to transform your home? Call us direct on 09 356 7547 or visit us at 739 Chapel Road, Dannemora.

Mention you're looking for the "Perfect Deal" to unlock the real deal in Heat Retention and Ventilation with HRV.

**CORBYN'S CLEANERS LTD**  
CLEANING. MADE EFFORTLESS.

I have just graduated with a business degree and am putting my efforts into delivering top-notch cleaning services for our community. #SupportLocal

- Reliable and professional cleaning services
- Affordable rates: **\$40/hour**
- Operating hours: **Monday to Friday, 10 AM - 4 PM**

Contact us today and let's make your space shine!

📞 **Call us at** [021 217 7436]

**Special Offer: Get 25% off your first clean when you sign up for weekly or fortnightly cleaning services!**

## NZ's most trusted ventilation 3 YEARS IN A ROW!

09 356 7547



hrv.co.nz





## SOLD BY AUCTION

110 Second View Avenue, Beachlands

Nestled in the heart of original Beachlands, this property offers endless possibilities on a flat quarter-acre site.

- Addition of a sleepout, complete with a kitchenette and bathroom provides ample space for extended families or multi-generational living arrangements.
- Enjoy the luxury of a heated saltwater pool.
- Close proximity to the local shops, beaches and Beachlands School.

Don't let this opportunity slip away - this property is sure to be snapped up quickly!

[rwbeachlands.co.nz/BCH30955](http://rwbeachlands.co.nz/BCH30955)

Lighthouse Real Estate Ltd Licensed (REAA 2008)

2 2 1 1012



**Brianne Bignell**  
 021 400 979  
 brianne.bignell@raywhite.com  
**ELITE**  
ALAN WHITE  
PERFORMER 23-24



**Paula Kirkman**  
 021 0290 8007  
 paula.kirkman@raywhite.com

WHY WAIT?



# Team Brie

## Premium Service | Premium Results

Brianne Bignell 021 400 979 | Conor Duffy 021 022 83366 | Paula Kirkman 021 029 08007  
[teambrie.beachlands@raywhite.com](mailto:teambrie.beachlands@raywhite.com)



# SPORTS

## Pohutukawa Coast Netball Club



### RESULTS FROM 20 JUNE

- Premier vs Sunnyhills: S1 - Loss 16 - 53
- Hihi vs Cockle Bay: S1 - Win 32 - 31
- Falcons vs Howick: Diamonds - Win 25 - 21
- Wekas vs Pakuranga: Cougars - Loss 18 - 36 - POD Laura Sinclair
- Pukekos vs Wakaaranga: S3 - Loss 9 - 33
- Kererus vs Cockle Bay: S2 - Draw 18 - 18
- C1 vs Sunnyhills: Jade - Win 28 - 10 - POD Elle Mills
- C2 vs Sunnyhills: Karaka - Loss 17 - 19
- J1 vs Howick:Teal - Win 27 - 8 - POD Seren
- J2 vs Monster Boot Camp: J1 - Loss 38 - 3 - POD Brier Dickson & Georgie Mitchell
- J3 vs Sunnyhills: Kowhai - Loss 6 - 43 - POD Libby Bastin
- J4 vs Sunnyhills: Nikau - Loss 6 - 9 - POD whole team
- J5 vs Shelly Park: J4 - Loss 8 - 11 - POD - Cameron McPhillips
- Tuis - POD Sophie
- Keas - POD Emily Unasa
- Kiwis - POD whole team, Awhi Sophia



Above: Yr 5 Kiwis

# CLEVEDON PUMPS & FILTRATION

Servicing Clevedon & surrounding areas for over 10 years

- New Installations and Maintenance of all Pump & Water Filter Brands
- Specialist Bore Pump Repairers & Installations

Contact: Geoff Peck 0274 797 741 | [geoff.peck@clevedonpumps.co.nz](mailto:geoff.peck@clevedonpumps.co.nz)



**PH: 530 8872**

Whitford Village  
[www.malmakswatershop.co.nz](http://www.malmakswatershop.co.nz)

WE ARE NOW AN AUTHORISED DEALERSHIP FOR  
**DAB & GRUNDFOS**  
REPAIRS & MAINTENANCE ON ALL PUMP BRANDS

#### STOCK AND SELL

- Pumps • UV Lamps
- All in one pump box
- Carbon & Sediment Filters
- Salt • Bore Softeners

- DAB • GRUNDFOS • GREENWAY • VIQUA
- ATLAS FILTRI • ALPINE PURE • STERILIGHT
- PURETEC • DAVEY • HANSEN

SERVICING POHUTUKAWA COAST FOR OVER 10 YEARS

For Sale by Tender - closes 1st August



Clevedon Lifestyle and Potential

Welcome to this incredible property that offers the perfect country lifestyle in Clevedon! Spread across three titles and spanning 14.4714 hectares, this spacious property is ideal for families looking for room to roam and explore. With access from three different road frontages, convenience is at your fingertips. Imagine stepping into a charming, cosy 2-bedroom cottage that spans across three levels. This home is the epitome of country charm and offers a warm and welcoming atmosphere for you and your family. If you're in need of space for your tools and projects, worry not! This property comes with a double garage/workshop that is easily accessible from inside the house, providing the perfect space for all your DIY needs.

For those interested in farming, horses or considering starting their own agricultural venture, this property has you covered. With farm sheds and yards available, you'll have everything you need to make farming a breeze. And with a reliable water supply from both a spring and tank.

The land itself offers a diverse terrain, ranging from flat to steeper, ensuring you'll never tire of the stunning landscape. Surrounded by picturesque and private scenery, this property provides the perfect opportunity to immerse yourself in the beauty of nature.

Don't wait any longer - it's time to start your next chapter right here! Clevedon is a hidden gem in the greater Auckland area, offering a delightful blend of country charm and potential. From its beautiful landscapes and vibrant arts and music scene to its local cafes, boutique food producers, and markets, Clevedon has it all. And with superb vineyards and a working agricultural community, you'll truly experience the best of rural living.

Open Home: Sunday 12 noon - 1 pm

Legal Details: Lots 1, 2 & 3 DP75482 NA32B/807, NA32B/808 & NA32B/809

For more details visit [www.remax.co.nz](http://www.remax.co.nz) CLE10427

John Ryburn m. 027 477 5433  
[jryburn@remax.co.nz](mailto:jryburn@remax.co.nz)

Richard Sumner m. 027 292 4754  
[rsumner@remax.co.nz](mailto:rsumner@remax.co.nz)

**RE/MAX Edge**  
everything real estate



Edge Real Estate Limited | Licensed REAA 2008 | Each office independently owned & operated



### Honouring and Celebrating Life

Our approach, philosophy and high standards are ideals we are proud to uphold. Our compassion, values and dedication when caring for the bereaved are just a few of the qualities that form the heart of Resthaven Funerals.



**HOWICK.** Cnr Picton & Walter MacDonald Sts | Ph. 533 7493  
**MANUREWA.** 88 Great South Rd | Ph. 267 2530

[www.resthavenfunerals.co.nz](http://www.resthavenfunerals.co.nz)

Funeral Directors ASSOCIATION OF NZ



# FOOD & ENTERTAINMENT GUIDE

## Thai red curry lentil soup recipe

This healthy and tasty soup is such a great way to warm up while being kind to your wallet. Throw in any vegetables you have in the fridge, and add extra curry paste if you prefer a bit more spice.

### Ingredients

- 1T olive oil
- 3 large carrots, diced
- 1 bunch celery stalks diced
- 1 large orange kumara, diced
- 2 cups baby spinach leaves
- 1T Thai red curry paste
- 1 can lentils, rinsed and drained
- 500ml chicken stock
- 500ml water
- 200ml coconut milk
- A squeeze of lime juice

### Method

In a large saucepan, saute the carrots, celery and kumara in olive oil for 5 minutes, until the vegetables start to soften.

Add the curry paste and cook while stirring for a further 2 minutes. Add stock and water, cover and simmer for about 15 minutes, until veges are soft. Add lentils, spinach and coconut milk, and simmer for a further 5 minutes. Add a generous squeeze of lime juice, season to taste with salt and pepper, and serve.



4 Traditional Pizzas and 4 Sides DELIVERED from \$59.90 ONLINE CODE 22861\* **Open: Sun-Thu 11am-9:30pm**  
 \*T&Cs apply. **Fri & Sat 11am-10pm**  
**Ph: 0800 30 40 50 or 09 951 3959**  
 www.dominos.co.nz  
 E: beachlandsdom@gmail.com

**THE FRANKLIN**  
 TAPHOUSE & KITCHEN

**Open 7 days from 12pm-late**  
 Woodfired pizzas  
 Fri/Sat/Sun 12pm-late

**BOOKINGS RECOMMENDED**  
**Ph: 536 5978**  
 www.thefranklinpub.co.nz

**VIN ALTO**

**DINING • WEDDINGS • FUNCTIONS**  
 424 Creightons Rd, Clevedon, Auckland 2582  
 PH 09 292 8845 • enquiries@vinalto.co.nz

**OPEN: Thur and Fri 5pm - late**  
 Saturday 12pm - late, Sunday 12pm -4pm

**SUNKIST**  
 BAR • KITCHEN

**OPENING HOURS**  
 Tuesday - Thursday: 3-10pm  
 Friday - Sunday: 12pm till late

027 208 6942  
 190 Jack Lachlan, Pine Harbour

**Small sharing plates**  
**Cocktails**  
**Marina view**

**Ambrosia**

**(09) 536 4151**  
 Monday to Friday 10:00am - 11:00pm  
 Saturday & Sunday 8:00am - 11:00pm

**44 Third View Ave, Beachlands**  
**The best of European Cuisine**

**BEACHLANDS CHARTERED CLUB**

Pohutukawa Coast's only not-for-profit Chartered Club since 1948

Open 7 days a week  
 Mon & Tues 4pm-Late  
 Weds-Sun 3pm-Late

2 Weekly Membership Draws  
 Fishing and 8 Ball Section  
 Fortnightly Quiz Nights  
 Free Pool & Darts  
 Kids Room  
 Gaming Lounge  
 Free\* Function Hire

**HALLERTAU CLEVEDON**

26 CLEVEDON-KAWAKAWA RD, CLEVEDON, AUCKLAND — CLEVEDON@HALLERTAU.CO.NZ — 09 869 2989  
 OPEN — MON & TUE: CLOSED — WED & THU: 4PM-10PM — FRI & SAT: 12PM-10PM — SUN: 11AM-9PM

**ADVERTISE IN OUR FOOD & ENTERTAINMENT GUIDE,  
 JUST \$20/WEEK. EMAIL ADVERTISING@PCTIMES.CO.NZ**

**PINOCCHIO**

**OPENING HOURS**  
 Tuesday - Sunday: 5-9pm

For bookings or takeaway: 09 217 1684 | 021 2144790  
 44 Kouka Road, Beachlands

@ pinocchionz | Pinocchio Pizza Pasta & more



# Community Calendar

Listings in our Community Calendar are free. Activities must be not-for-profit and have a community focus. For listings, email [info@pctimes.co.nz](mailto:info@pctimes.co.nz) - include activity, day of week, time, venue and contact details.

## Weekly events

### MONDAY

- **CASUAL BADMINTON:** 7.30-9pm, Te Puru Centre, \$7. Ph:536 5360.
- **ST JOHNS YOUTH:** 6-7.30pm, St Hilda's Church, Wakelin Road.
- **CASUAL TABLE TENNIS:** 7.30-9pm. Te Puru, \$7.
- **SOCIAL TENNIS:** Adults beginners/intermediate 7-9pm Te Puru. Stephen 021 217 7587.
- **KEAS:** scouts for ages 6-8 - 5:30-6:30 Te Puru Scout Hall, [tepuru@group.scouts.nz](mailto:tepuru@group.scouts.nz)
- **CUBS:** scouts for ages 8-11 - 5:30-6:30 Te Puru Scout Hall, [tepuru@group.scouts.nz](mailto:tepuru@group.scouts.nz)
- **SENIOR CIRCUIT:** 9:00-10:00 Te Puru Community Centre, \$6
- **JUMPING JUNIORS GYMNASTICS:** ages 1-4 - 11.00-11.45 Te Puru Community Centre, \$14

### TUESDAY

- **COASTAL PLAYGROUP** 5 Jacobs Way, Maraetai. 9am-12pm. Bubs till 5 yrs. Sarah 022 082 6432.
- **KOKAKO VOLUNTEER DAY:** 8.15am-3.30pm, Northern Hunua Ranges. Ruth 021 950 915.
- **RUMMIKUB** 1-4pm, Te Puru Centre \$2. Bernadette 021 170 9350.
- **NATTER N STITCH** 12-3pm, Log Cabin, Sunkist Bay. Gill 021 204 6647
- **MARAETAI (LAWN) BOWLING CLUB:** 1pm, Te Pene Road. Tues, Thurs, Sat. Derek 536 4626.
- **CASUAL BADMINTON:** 9:30-11:30am, Te Puru Centre, FREE.
- **TABLE TENNIS** - 1:30pm-3:30pm, Te Puru Centre - Free
- **BASKETBALL:** All ages, Te Puru Centre. Email [sport@tepuru.co.nz](mailto:sport@tepuru.co.nz), 027 775 5320.
- **MEN'S AND INTERMEDIATE/ADVANCED LADIES TENNIS:** 7-9pm, Te Puru. Stephen 021 217 7587
- **HOUSIE/BINGO** 7.30pm, Beachlands Chartered Club, \$15. Ph: 536 6233.
- **POHUTUKAWA COAST CHILDREN'S CHOIR:** For primary school ages, 3.30pm - 5pm, at Ray White 'The Shed', contact Rhianon 0212160224.
- **POHUTUKAWA COAST YOUTH CHOIR:** For intermediate and high school ages, 5.15pm - 6.30pm, at Ray White 'The Shed', contact Rhianon 0212160224
- **POHUTUKAWA COAST COMMUNITY CHOIR:** 7.15 - 8.45pm. [coastchoir.com](http://coastchoir.com)
- **THE GOOD KNIGHTS SOCIAL CHESS** 7:00 - 8:30pm. Beachlands Baptist Church, 59 Third View Ave. Runs fortnightly (usually 1st & 3rd Tues of the month). All ages and skill levels welcome. Contact 022 656 1154 for more info.
- **SENIOR STRENGTH & BALANCE:** 9:30-10:30 Te Puru Community Centre, \$10

### WEDNESDAY

- **JP SERVICE:** 5.00-6.30pm, Beachlands Library.
- **COASTAL MAINLY MUSIC** 9am-12pm, for 0-5yrs, 5 Jacobs Way, Maraetai. Sarah 022 082 6432.
- **SENIOR CIRCUIT:** 9am \$6 Te Puru Centre. First Wednesday of the month BYO plate for coffee after.
- **CASUAL BADMINTON:** 10am-12pm, Te Puru Centre. All welcome. FREE.
- **SENIOR STRETCH & STRENGTH:** 9-10am, Beachlands Memorial Hall, \$12 per month (8 sessions).
- **PEST CONTROL DAY:** Southern Hunua Ranges, Ruth 021 950 915.
- **MASTERS SWIMMING:** Wed/Sat, carpool from Bchlds-Mtai. [president@manukaumasters.co.nz](mailto:president@manukaumasters.co.nz).
- **"CREATIVE WINGS" ART FOR SENIORS:** 10am-12pm, St Hilda's Church, Beachlands.
- **CLEVEDON FIRESIDE BRIDGE CLUB:** 10.15am, Clevedon Anglican. Lessons avail. Pauline 299 7433.
- **SCOTTISH COUNTRY DANCE CLUB:** 7.30-9.30pm, Hillpark Primary School Hall. Heather 267 6375.
- **MAHJONG:** 10am-12pm, Te Puru, \$2.
- **QUIZ NIGHT:** 7.30pm. Teams of up to 6, \$5pp Every second week Beachlands Chartered Club 536 6233
- **BADMINTON GAMES:** 8pm, Clevedon Hall, BYO racquet, shuttlecocks provided, \$3. Rebecca 021 1109 675
- **WORN AGAIN OP SHOP,** 9.30am-12pm, The Cottage, 5 K Bay-Orere Rd, Kawakawa Bay.
- **COASTAL TREASURES** Open Wednesday - Saturday, 10am-4pm, 41 Third View Ave, Beachlands. Donations welcome Monday, Wednesday and Saturday before 7pm at 25 Liberty Crescent (unless raining) or phone Tania on 021 644 722 for appointment.

### THURSDAY

- **MAINLY MUSIC.** 9.30am, Beachlands Baptist. Morning tea provided. 021 385 535.
- **GENTLE EXERCISE FUN & FRIENDSHIP FOR SENIORS 65YRS+:** \$5 per session 10am-12.00pm St Hilda's Church Hall, Wakelin Road, Beachlands. Contact Christine Bruinisma 021 133 5283.
- **LINE DANCING:** 10-11am, Beachlands Hall. Karen 021 213 6020.
- **TOY LIBRARY:** 10am-12pm, 59 Third View Ave. Can view & reserve toys online. Contact Betty Wilkings 021 492 325.
- **SCOUTS - AGES 11-15 - 6:30-8:30** Te Puru Scout Hall, [tepuru@group.scouts.nz](mailto:tepuru@group.scouts.nz).
- **TWICE LOVED OP SHOP:** Open 10am-3pm, 104 Maraetai Drive, Maraetai.
- **S.A.Y.G.O. "STEADY AS YOU GO"** Balance and coordination class. 10.30am. Kawakawa Bay Hall. \$2 Fee for Hall Hire and donations to Age Concern and Community. Friendly, gentle exercises. Contact 0210557370 Barbara Long.
- **COASTAL UKES (UKELLE CLUB)** 1:30 - 2:30pm, at Log Cabin, contact Val 027 393 4999 or Jean 021 023 09043.
- **261 FEARLESS - SOCIAL WOMEN'S RUNNING GROUP:** 10.15-11.15, all ages and abilities welcome. Te Puru Sports Fields by the playground. Term time only.
- **U3A BEACHLANDS-MARAETAI** Fourth Thursday of each month, 10am at Presbyterian Church, Jacobs Way, Maraetai. Monthly speakers, plus special interest groups. Brenda 021 777 171.
- **JUMPING JUNIORS GYMNASTICS:** ages 1-4 - 9:15-10:00 Te Puru Community Centre, \$14
- **CLUB NIGHT:** Open to everyone 5:30-9.30pm, Te Puru Community Centre

### FRIDAY

- **SENIOR CIRCUIT:** 10-11am Te Puru Centre, \$7 casual, \$60 concession card (10 sessions) Ph 536 5360.
- **SENIOR STRETCH & STRENGTH:** 9-10am, Beachlands Memorial Hall, \$12 per month (8 sessions).
- **COTTAGE CAFE** 10am-12pm, K Bay, 1st and 3rd Fridays of each month, free coffee + food, company.
- **WORN AGAIN OP SHOP,** 9.30am-12pm, The Cottage, 5 K Bay-Orere Rd, Kawakawa Bay.
- **TWICE LOVED OP SHOP:** Open 10am-3pm, 104 Maraetai Drive, Maraetai.
- **COAST YOUTH:** 6:30-8:30pm, Beachlands Baptist Church, 59 Third View Ave. Anyone in intermediate or high school welcome. Contact Majella 021 079 3117 for more info.
- **CLEVEDON ART GROUP** Meets weekly on Fridays, 10am-12noon. McNicol Homestead. New members, beginners to experienced are very welcome. Phone Marian 027 296 3827.
- **FOODTOGETHER POP-UP SHOP** 2pm - 4pm, Beachlands Baptist Church, 59 Third View Ave. Grab a \$15 bag of seasonal, fresh fruit & veg at this community pop-up. We'd love to see you there. Pre-order at [foodtogether.co.nz](http://foodtogether.co.nz) or pop in to pick your own. Contact Meg 021 887 902 for more info.

### SATURDAY

- **WORN AGAIN OP SHOP,** 9.30am-12pm, The Cottage, 5 K Bay-Orere Rd, Kawakawa Bay.
- **TWICE LOVED OP SHOP:** Open 10am-3pm, 104 Maraetai Drive, Maraetai.
- **FREE YOGA CLASSES WITH MACA SALAS-PAMPALONI:** 8.15am-9.30am, Beachlands Chatered Club. Contact [alma.tribe.nz@gmail.com](mailto:alma.tribe.nz@gmail.com), 021 751 1760.

### SUNDAY

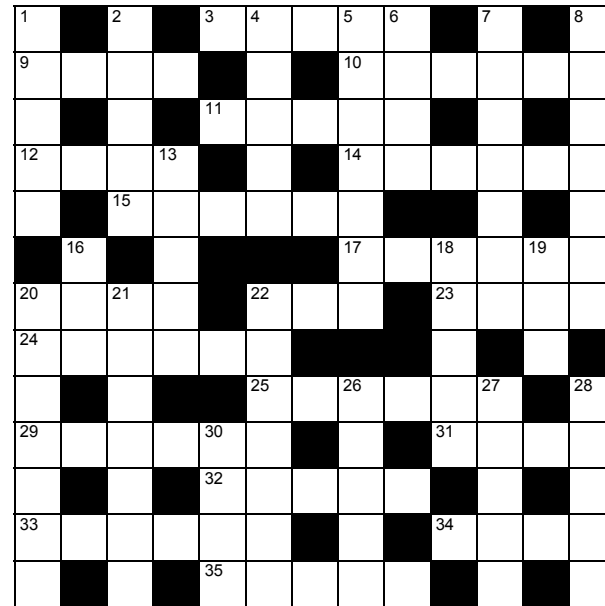
- **TOY LIBRARY:** 9-10am, 59 Third View Ave. Can view & reserve toys online. Contact Betty Wilkings 021 492 325.

## Other events and services

**OMANA STAMP CLUB** SECOND TUESDAY OF THE MONTH, 1.30pm at Maraetai Library. David 530 8869 / Graham 536 6958.

**POHUTUKAWA COAST TOASTMASTERS** 7-9PM EVERY SECOND WEDNESDAY  
Sunkist Bay Boating Club. [pohutukawacoast@d112tm.org.nz](mailto:pohutukawacoast@d112tm.org.nz) or Michelle 0274 962 504.

# RAYWHITE BEACHLANDS CROSSWORD



**Brianne Bignell**  
021 400 979  
[brianne.bignell@raywhite.com](mailto:brianne.bignell@raywhite.com)

**RayWhite.**

### Across

- Swivel (5)
- Observe (4)
- Breathe with a rattle (6)
- Star's walk-on part (5)
- Omit (4)
- Foreign housekeeper (2,4)
- Code (6)
- Thoughtlessly indifferent (6)
- Pass oneself off (4)
- Howl (3)
- State of mind (4)
- Starter (6)
- Exhilarate (6)
- Uncultivated (6)
- Exclamation of disgust (4)
- Small-minded (5)
- Money order (6)
- Medical image (4)
- Pry (5)

### Down

- Investigate furtively (5)
- Reason (5)
- Fury (5)
- Express great confidence in (5,2)
- 1000 (colloq) (4)
- In reality (L) (2,5)
- Hairy-faced (7)
- Person who fails or shows weakness (inf) (5)
- Unit of weight (3)
- State indirectly (5)
- Greedy person (colloq) (3)
- Faultless (7)
- Stiff and self conscious (7)
- In the middle of (7)
- Proportion (5)
- Stagger (5)
- Broke (colloq) (5)
- Musical composition (4)

Answers on page 10

# BARFOOT THOMPSON & Student Voice

## LOCAL STUDENTS' NEWS, VIEWS & LITERARY TALENT

This column features news, views and literary talents of students from Beachlands, Maraetai, Clevedon, Brookby, Hunua, Paparimu, Orere and Ardmore Schools.

One student featured each week will be presented with a certificate and a \$20 book voucher, thanks to Barfoot & Thompson's Beachlands and Whitford branches.



This week's voucher sponsored by Matthew Brown

### Eyes tell what words can't

Eyes tell what words can't,  
When your feeling grow just like a plant,  
Madness, sadness, happiness, your eyes show it all,  
As you can feel, the feelings begin to crawl,  
The clouds wash over you, as you look above,  
Your feelings of sadness switch into love,  
You know it's right when it fits like a glove,  
Eyes tell what words can't,  
The feelings inside you yell like a chant,  
You try to ignore them as you carry on your run,  
but how long can you go on for,  
Until you can't see the sun,  
Words might tell emotions, but eyes tell stories,  
A teardrop rolls down the cheek, remembering the  
secret eyes keep memories.

- by Gurleen, Year 8, Clevedon School



# Dog registration declines in Auckland

- by Laura Kvigstad, Auckland Council reporter.  
Funded by New Zealand on Air

Auckland Council is calling on dog owners to register their dogs after a substantial decline from last year.

Less than half of Auckland's 133,801 known dog population has been registered and there has been an over 25 per cent decline in registration compared to the previous year.

Just 41 per cent, 54,906 dogs, have been registered this year compared to this time last year when 63 per cent, 54,906 dogs, were registered.

Animal Management manager Elly Waitoa says it's disappointing that registration has trailed behind compared to the same time last year.

"There are always those who choose not to meet their responsibilities, and we would appeal to those owners to do the right thing and register," Waitoa said.

Money from dog registration is put towards investigating

dog attacks and roaming dog complaints, welfare calls, animal adoption and reuniting lost dogs with their owners.

"Every dog owner who doesn't pay their share is leaving it to others to pay for the services we provide to Auckland communities."

"We've made registration as simple as we can; you can easily renew your dog registration online or you can walk into one of our service centres."

Cr Josephine Bartley says registration is down despite animal management services being more in demand,

"Last year, over 50 per cent of dogs through our shelters were unregistered, making it difficult for our staff to reunite dogs with their owners," Bartley said.

"We need dog owners to be more responsible and to ensure their dogs are registered, desexed, microchipped, controlled, and are not left to roam freely, as this is when many of the problems occur, including dog attacks."

## Professionals & Trades

### DENTAL

#### WHITFORD DENTAL

We are dedicated to your personal well-being through dental health



- All ceramic tooth filling materials using CerecAC omnicam, 3D technology
- Permanent tooth replacements with dental implants
- For gum health and maintenance call our hygienist Zahraa
- All aspects of general dentistry

**FREE DENTISTRY IS AVAILABLE FOR ALL YOUNG ADULTS**  
Eligible from Year 9 until their 18th birthday. Contact us today to learn more

Evening appointments available

Call us now on 530 8461 or email: info@whitforddental.co.nz

**Dentists:**  
• Dr. Rick Parfitt B.D.S. • Dr. Alex Lindsay B.D.S.  
• Dr. Maad Youhana B.D.S.  
**Hygienist:**  
• Zahraa Talib B.O.H

**09 530 8461**  
Whitford Village, Whitford

## Classified Ads

### BUY/SELL

#### JEWELLERY WANTED TO BUY

Old gold, rings, broken chains, unwanted jewellery for scrap etc. Paul Taylor Jewellers, Shop C7 Pohutukawa Coast Shopping Center. Ph 536 4200

### SITUATIONS VACANT

#### MORTON TIMBER Purchasing Officer

Run and Manage Hardware store  
Ordering from Suppliers  
Customer Sales and Invoicing  
Timber and hardware knowledge would be an advantage but not essential  
Computer Skills Required  
Phone Office: 09 292-8656 or Dean: 021 943 220

### TO RENT

#### SPACE TO RENT - 13 Papakura Clevedon Rd above Remax Clevedon

Approx 25 sqm, shared lunchroom & toilet facilities. Nice Views. Currently used as a Bridal Studio. Space would suit a Hairdresser, Beauty Salon or professional. Call Geoff 027 479 7741.

### WORK WANTED

#### RENOVATIONS

Bathrooms, kitchens, toilets - build, tile, glass, flooring, plaster and paint. Start to finish. Exp. builder. Refs avail. Ph: Gary 021 903 020 or 536-6358. Oakes Build Landscape Maintenance. www.oakes.nz.

#### MOWER AND CHAINSAW REPAIRS

All small engine repairs, mowers, ride-on mowers, chainsaws, weedtrimmers, & chain saw sharpening. No job too small. Free pick-up local area only. Ph: 536 5621 or mob 027 308 7777.

#### PAINTING/PLASTERING

Interior and exterior quality painting. Refs available. Ph: Gary 021 903 020 or 536 6358.

#### READY GRASS/ LANDSCAPING

Specialising in ready-grass, seeding, lawn levelling, turf cutting & landscaping. Locally based Ph: Adam on 022 015 2805.

#### HANDYMAN

You name it... renovations, DVS installation, gardening, retaining, fencing, landscaping, trellis, light building and maintenance work. Ph Gary on 021 903 020 or 536 6358.

#### EXPERIENCED CAREGIVER

Can include wheelchair care, showering, meals, housework, shopping, gardening and transport. I am reliable, honest, caring, capable. Days and times to suit you. Ph Davina 027 278 9737.

#### CROSSWORD ANSWERS

**Across:** 3. Twist, 9. Look, 10. Wheeze, 11. Cameo, 12. Skip, 14. Au pair, 15. Cipher, 17. Blithe, 20. Pose, 22. Bay, 23. Mood, 24. Entrée, 25. Thrill, 29. Fallow, 31. Yuck, 32. Petty, 33. Cheque, 34. Scan, 35. Snoop.  
**Down:** 1. Gloss, 2. Logic, 4. Wrath, 5. Swear by, 6. Thou, 7. De facto, 8. Bearded, 13. Piker, 16. Ton, 18. Imply, 19. Hog, 20. Perfect, 21. Stilted, 22. Between, 26. Ratio, 27. Lurch, 28. Skint, 30. Opus.

## Professionals & Trades

### BOATING & MARINE

#### Ovlov Marine Pine Harbour

09 536 5249  
www.ovlov.co.nz

Sales and Service of outboard motors, inboards, sterndrives and IPS.



Situated in Pine Harbour Marina and mobile we can care for your vessel be it big or small.

Contact the team on 536 5249 or email on phil@ovlov.co.nz for service enquiries and partsph@ovlov.co.nz for spare parts.



### BUILDERS



- NEW BUILD
- RENOVATIONS
- DECKS
- BATHROOMS

#### FOR ALL YOUR BUILDING NEEDS

Call Justin on:  
**021 460 011**  
Licensed Building Practitioner

justin@innovateconstruction.co.nz  
www.innovateconstruction.co.nz

### CHIROPRACTOR



- Headaches / Migraine • Dizziness / Vertigo • Neck pain / Whiplash • Trapped nerves • Back pain / Sciatica
- Plantar fasciitis • Sports Injuries / Performance & more...

#### David Owen DC | Registered Chiropractor

ACC Registered . 25 years experience

02102 144 070 | clevelandchiro@gmail.com | www.clevelandchiro.co.nz

### DENTAL

## Great Smiles. Better Health.

At Anthony Hunt Dental we are proud to have been serving our community since 2011.

Leading the way using the latest techniques and technology, we create great smiles and better health for the whole family.

(09) 292 9071 smile@ahdental.co.nz  
52 Papakura-Clevedon Road  
Clevedon  
www.ahdental.co.nz



**ANTHONY HUNT**  
Dental  
GREAT SMILES • BETTER HEALTH



**smile dental**  
giving you one more reason to smile

#### QUALITY AFFORDABLE FAMILY DENTISTRY

**\*FREE dental examinations**  
\*excl. xrays



129 Beachlands Rd, Beachlands, Auckland

www.smiledental.co.nz **09 302 0808**



#### INTEREST-FREE DENTAL PAYMENT PLANS

Book online:  
www.marinadentists.co.nz

190 Jack Lachlan Drive, Beachlands  
Call us: 09 535 1074

### DRAINAGE & EARTHWORKS



#### Drainage Vision Limited

www.drainagevision.co.nz

Mike 027 593 0326

- Drain Unblocking • CCTV Inspections • Certified Drainlayer
- Vacuum Trucks • Pipe & Cable Locations

### ELECTRICIANS



No job too small - No job too big!  
Fast, reliable service.  
Qualified lighting designer

**PH: 536-4076**  
**MOB: 021 769 964**

**FREE Quotes**

www.pohutukawaelectrical.co.nz

Advertise here for \$30 weekly  
or \$35 fortnightly.

Ph: 021 026 14467 or email  
advertising@pctimes.co.nz



# Professionals & Trades

## ELECTRICIANS

**Auckland Wide Electrical**  
Ph 536 6800  
Your Local Registered Electricians



- Heat Pump /Aircon Installations
- Switchboard Upgrades & Rewiring
- TV Cabling and Aerial Installations
- New House Wiring and Renovations
- Water pumps • Hot Water
- Oven Repairs • Lighting and Switchgear

[www.awe.co.nz](http://www.awe.co.nz) • [help@awe.co.nz](mailto:help@awe.co.nz) • free quotes  
Providing electrical services on the Pohutukawa Coast & throughout Auckland

## PUMP SUPPLIES



**AUCKLAND ELECTRICAL & PUMPS**

- All Electrical Services
- Water Pump & Bore Pump Repairs & Installation
- Residential, Rural & Commercial Services
- New House Wiring/Rewiring & Renovations
- Filter & UV Light Replacement

PHONE: 027 474 1579 | 09 536 4074  
admin@aeps.co.nz

## TYRES



**TYREGUARD**  
PROTECTING YOUR JOURNEY

**YOUR TRUE TYRE PROFESSIONAL ON THE COAST**

- Friendly Reliable Service
- Locally Owned & Operated
- Over 20 Years Experience
- For ALL Your Tyre Needs

Agricultural, Batteries, Car / Passenger, Earthmover, Mag & Tyre Packages, Puncture Repairs, Truck / Commercial, Wheel Balancing, 4WD / Off Road, 24/7 After-Hours Callout

Call Mike 021 901 034 | sales@tyreguard.co.nz | www.tyreguard.co.nz

## ROOFING



**ROOFING & SPOUTING NZ LTD**  
Delivering Quality & Durability

RE-ROOFING | NEW ROOFS | ROOF COATINGS  
CONCRETE ROOF TILE SPECIALIST | CONCRETE TILE REPAIRS  
GUTTER REPLACEMENT | INTERNAL GUTTER CONVERSION

0800 766 350 | [www.roofingnz.co.nz](http://www.roofingnz.co.nz) | [info@roofingnz.co.nz](mailto:info@roofingnz.co.nz)

## VETERINARY

**Franklin Vets Beachlands**

1/43 Kouka Road,  
Pohutukawa Coast Shopping Centre  
538 0010 || [beachlands@fvs.co.nz](mailto:beachlands@fvs.co.nz)

Mon-Fri 8am-6pm  
Sat 9am-3pm

[www.franklinvets.co.nz](http://www.franklinvets.co.nz)

Come meet our local team and tour our Best Practice & Cat Friendly accredited facility



FranklinVets

## MEAT SUPPLIER



EST 2000  
AUCLAND, NEW ZEALAND

- For all your homekill and hunting processing.
- Vacuum packing standard & delivery available.
- Qualified butchers, expert advice, friendly service.
- Sausages (gluten free available), bacon, salami, biersticks, biltong, smoking and curing.

027 632 8979  
admin@meatworx.co.nz  
[www.meatworx.co.nz](http://www.meatworx.co.nz)

## SCAFFOLDING

QUALITY | RELIABLE | WHITFORD BASED | LAYHER SCAFFOLD SYSTEM



**DTS WRIGHT**  
SCAFFOLDING

Contact Dylan 021 239 4276 | [dtswrightsc scaffolding@gmail.com](mailto:dtswrightsc scaffolding@gmail.com)

## SURVEYOR

**SURVEY PLUS**  
LAND SURVEYING

Your local Pohutukawa Coast Surveyor

admin@surveyplus.co.nz | 020 4 SURVEY (020 4 787839)

**POHUTUKAWA COAST VETS**

LOCALLY OWNED & OPERATED IN BEACHLANDS

Book an appointment  
Ph: 09 320 1472  
Or book online  
[www.pcvets.co.nz](http://www.pcvets.co.nz)

reception@pcvets.co.nz | 43 Wakelin Rd, Beachlands



## MECHANICAL REPAIRS


**MARAETAI AUTOMOTIVE**

All Makes & Models | All Types of Repairs  
Petrol - Diesel - European Vehicles - Loan Cars

- Servicing • WOF • Brakes • Clutches • Wheel Alignments
- Tyres • Transmission Services • Batteries • Welding
- Cambelts • CV Joints • Auto Electrical Repairs

131 Maraetai Drive, Maraetai  
Ph: 536 6542

ALL WORK GUARANTEED  
HOURS: Mon - Fri: 8am-5pm



## WATER

**Coastal**  
PUREWATER LTD

The highest quality water for all your household, property and commercial needs

Ask for our pure water by name

Manukau Quarries LP  
885 Whitford-Maraetai Road, Beachlands | 09 2630220



## TREE SERVICES

CALL NATHAN 021 196 6509

- CHIPPING
- LAND CLEARING
- HEDGE TRIMMING
- TREE PRUNING
- TREE REMOVAL
- STUMP GRINDING

FIND US ON FACEBOOK [coastalcutters@hotmail.com](mailto:coastalcutters@hotmail.com)



**FRANKLIN WATER**  
MAKING WATER WORK

Ph 0800 826 525  
sales@franklinwater.co.nz  
[www.franklinwater.co.nz](http://www.franklinwater.co.nz)

Supply, Installation & Servicing of:

- Water Pumps, Filter Systems & UV Light Systems
- Tank Cleaning
- Replacement Filters
- Loan Pumps available on ALL House Pump Servicing & Repairs

Bores / Pumps / Tank Cleaning / Filtration Systems  
Solar Pump Supply & Installation



**POHUTUKAWA MOTORS.co.nz**

AA APPROVED REPAIRER,  
AA BATTERY STOCKIST  
MTA ASSURED

WE ARE YOUR LOCAL, HONEST AND TRUSTED AUTOMOTIVE REPAIRER. POP DOWN AND SEE US. WE'LL LOOK AFTER YOU AND YOUR VEHICLE.

- ALL MECHANICAL REPAIRS
- WOF
- BRAKES
- TYRES
- AUTOMOTIVE AIRCON SERVICING

57 THIRD VIEW AVENUE, BEACHLANDS  
09 536 6664



**DS TREES LTD**

Land Clearing  
Tree Maintenance  
Tree removal  
Stump Grinding  
Hedge Care

Phone Doug  
021537171 • 09 5378595  
info@dstrees.co.nz  
[www.dstrees.co.nz](http://www.dstrees.co.nz)



## MORTGAGE ADVISERS

**Loan Market**

New Zealand's widest range of lenders, in one place.

Toni Dawson, Mortgage Adviser  
027 646 9269  
[toni.dawson@loanmarket.co.nz](mailto:toni.dawson@loanmarket.co.nz)  
NZ Financial Services Group Limited (FSP286965)

Find out more at [adviser.loanmarket.co.nz/toni-dawson](http://adviser.loanmarket.co.nz/toni-dawson)




## Your Local Arborists

Your problem is our specialty!

**JESSEP CONTRACTING**  
TREE CARE & REMOVALS

CALL PHIL FOR A FREE QUOTE  
022 607 4455

CHECK OUT  
[jessepcontracting.co.nz](http://jessepcontracting.co.nz)

- Tree Care, fine pruning and removals
- Shelterbelt removals and chipping
- Palm cleaning and hedge trimming
- Hedge trimming
- Tree Light installations
- Small Hiab Lift and Shifts



## WARDROBE SUPPLIER

**wardrobeworld**  
get organised for life

Wardrobes | Melteca & Wire Shelving | Sliding Doors  
Linen Closets | Garage Storage | Free Measure & Quote

Sean: 0273 433 866 | [sean@wardrobeworld.co.nz](mailto:sean@wardrobeworld.co.nz)





# BUSINESS DIRECTORY

## ACCOUNTING SERVICES

Probiz Systems Ltd, Sharon Bramley 021 122 8059 OR 530 8036  
 Ian McLennan, CA www.iwm.co.nz 536 6715  
 Diane Myers CA, diane@myersca.co.nz 292 9470  
 Business Allsorts, MYOB & Xero Experts 536 5850  
 Peat Johnson Murray 869 2091

## AERIALS, TV & HOME THEATRE

Auckland Wide Electrical 536 6800, 021 998 665

## AGGREGATES

Beachlands Mitre 10 536 6567

## ALUMINUM WINDOWS

www.windowrenovations.co.nz  
 Repairs and Replacements 021 297 2320

## APPLIANCE SERVICING

Axial appliance servicing Service@axial.co.nz 573 0877  
 Appliance Wizard Ltd Ph Paul 0275 784 226

## ARCHITECTS

Peter Diprose www.diprose.co.nz 530 9065 or 021 125 1498

## ARCHITECTURAL PLAN & DESIGN

Ross J Willoughby 530 9358  
 RBG Ltd 027 260 8005

## AUTO ELECTRICIAN

Mobile Auto & Marine 0800 662 352

## BARBERS

Joe's Barbershop 536 7265

## BEAUTY

Xtreme Beauty & Barbers 600 2325 or 021 992 686  
 www.xtremebeauty.co.nz

## BED & BREAKFAST

Brookwood Lodge, Beachlands. 536 6975 or 0274 796 453

## BLIND SERVICES

Blindworks - For all New Blinds - Plus Blind Cleaning and Repairs  
 www.blindworks.co.nz 0800 999 229

Onsite blind cleaning & repairs - plus new blinds  
 info@onsiteblinds.co.nz 0508 253 262

## BOOKKEEPERS

Business Allsorts, MYOB & Xero Experts 536 5850

## BUILDERS

Bryant Builders Ltd 027 493 5507 or 027 692 8777  
 Homing Instincts Ltd, ph Gareth Price 021 618 181 or 536 6422  
 Michael Nootebos 536 6628 or 0274 799 776  
 Revamp Renovations Ltd 027 437 4896  
 Stehr Brothers Construction 021 939 008  
 Superior Builders, ph Neil 021 079 2589  
 Stockade Builders Ltd 021 570 836

## BUILDERS' SUPPLIES

Morton Timber Co. Clevedon 292 8656  
 Beachlands Mitre 10 536 6567

## CARPET CLEANING

Aladdin Carpets, Phone Michelle 09 537 4320

## CELEBRANT

Ceremonies by Diana, www.celebrantdiana.co.nz 021 152 9925

## CHAINSAW SALES/SERVICE/REPAIRS

Greenmount Mowers & Chainsaws 09 970 4816

## COMPUTER REPAIR

Wi-Fi & Internet, Home and Office IT Support  
 Call Graeme Thomas 027 429 0677

## CONCRETE SERVICES

Aaron Ross Concreting 0210 233 2673  
 We Lay Concrete Ltd. 021 038 1086  
 Murray Douglas Limited 027 498 5267

## COSTUME HIRE

Clevedon Costumes and Vintage Apparel 022 018 2711

## DENTISTS

Whitford Dental Group 530 8461  
 - Dr Rick Parfitt, Dr Alex Lindsay & Dr Susan Clow  
 - Hygienist - Shelley Chadwick & Zahraa Talib 530 8461  
 Anthony Hunt Dental Ltd, Dr Anthony Hunt, Clevedon 292 9071  
 Marina Dentists Pine Harbour 536 4361  
 Smile Dental Beachlands  
 - Your local dentist. New patients welcome. 022 8888 171  
 - Free examination since 1996 09 302 0808  
 www.smiledental.co.nz 0800 4 smile

## DIGGER & TRUCK HIRE

The Little Digger 027 278 0335 or 536 4424  
 Digger Landscapes www.diggerlandscapes.nz 021 415 832  
 Bizzy Bobcats & Diggers - call Mark 027 494 4414

## DOCTORS

Beachlands Medical Centre 536 6006

## DRAINLAYERS

Vibe Earthmovers and Drainage call Vincent 0272 225 377  
 Probuilt Earthworks Drainage call Gary 021 617 611  
 Drainage Vision Ltd call Mike Adams 027 593 0326  
 Certified drainlayer, CCTV inspections, drain unblocking

## EARLY CHILDHOOD EDUCATION

Whitford Early Learning Centre 530 8726  
 Clevedon Kidz Early Childhood Centre 292 8358

## EARTH MOVING CONTRACTORS

Riordan Contracting 09 530 9429 OR 027 430 9429  
 Stehr Brothers Civil Construction 021 939 008  
 Pohutukawa Coast Earthmoving, Grant 027 475 8468  
 www.brookbycontracting.co.nz Earthworks/Carriage/Drilling  
 027 530 9290

## ELECTRICIANS

Auckland Electrical & Pump Services 536 4074, 027 4741 579  
 Auckland Wide Electrical 536 6800, 021 998 665  
 Pohutukawa Electrical 536 4076, mob 021 769 964  
 Positive Electrical Services 021 801 606

## ENGINEERS - CIVIL/ENVIRONMENTAL/ STRUCTURAL

Fraser Thomas Ltd 278 7078

## FENCING CONTRACTORS

Craig McLeod 027 292 5844  
 White Fencing: 292 8064, 0274 957 868  
 - rural fencing, retaining walls www.whitefencing.co.nz

## FLOORING

Nicks Floor Sanding 536 6916, Mobile 021 875 456

## FLORISTS

Clevedon Flowers, www.clevedonflowers.co.nz 292 9540

## FUNERAL DIRECTORS

Resthaven Funeral Services  
 Rachel Benns & Raewyn Proctor 533 7493, 267 2530  
 Ensom Funeral Services  
 John Ensom & Jo Nevin 299 6646 or 524 6765  
 Fountains Funeral Directors & Monumentalists -  
 Papakura, Franklin and Manurewa 298 2957  
 Howick Funeral Home Robert Johnstone - Mark Rowley 534 7300  
 Souly Funerals Beachlands 0800 47 68 59

## GARAGE DOORS

Repairs & Service, Metro Garage Doors 263 6608

## GARDEN CENTRE

Beachlands Mitre 10 536 6567

## GARDENING

Rosie's Gardening Service 021 0233 5998

## GEOTECHNICAL SERVICES

Fraser Thomas Ltd 278 7078

## GIBSTOPPING

Gib stopping & painting - Tony 0274 966 394 or 536 6477

## GLASS AND GLAZING

Manurewa Glass 266 7794  
 Howick Glass 535 4180

## GUTTER CLEANING

Skyhigh Roof and Gutter Cleaning Ltd  
 Website: www.skyhigh.nz 021 951 719

## HAIRDRESSING

Hair Do's @ Maraetai, ph Denise 0274 599 901  
 Cooper Hairdressing, 16 Te Pene Rd, Maraetai 027 329 1781

## HANDYMAN SERVICES

Local Handyman: 536 5050 or 021 156 7370  
 Oakes Build Landscape Maintenance, www.oakes.nz 021 903 020

## HEAT PUMPS

Positive Electrical Services 021 801 606  
 Auckland Wide Electrical 536 6800  
 AES - Auckland Energy Solutions  
 Website: www.aes.nz Phone: 09 575 1191

## HOUSE WASHING

BEST Property Services 021 366 615  
 Just Clean Me, Exterior Cleaning Services 022 089 2383  
 House washing, gutter cleaning, roof treatments, water blasting.

## JEWELLER

Paul Taylor Manufacturing Jewellers 536 4200  
 Repairs/Remodelling/Valuations/Insurance Replacements  
 Shop C/7, 129 Beachlands Rd, Pohutukawa Coast Shopping Centre

## KITCHENS

Kitchen Craft Ltd, Ph Warren 09 274 4221  
 for Sizzling Kitchen Design & Cabinetry www.kitchencraft.co.nz

## LANDSCAPING

Eastside Landscapes 021 484 158  
 Nicky Auld - landscape design, consultations 021 972 534

## LAUNDROMAT

Kiwi Laundry Co, www.kiwilaundry.co.nz 022 463 8416  
 7 DAYS at GAS Maraetai, 131 Maraetai Drive, Maraetai 536 4218

## LAWNMOWING & GARDENING SERVICES

JIMS MOWING Beachlands - Frank 027 415 3657  
 Greenacres - Stephen Howe 292 4165 or 021 2266 753  
 Prolawns (Beachlands based) Shane 021 746 887  
 R&R Garden Services Richie: 021 917 332, Roanne: 027 252 8183  
 Coastal Gardener (Beachlands based) Darryl 022 360 3065

## LAWNMOWER SALES/SERVICE/REPAIRS

B'inds/M'tai mower/chainsaw repairs 536 5621 or 027 308 7777  
 Greenmount Mowers & Chainsaws 09 970 4816

## LEGAL SERVICES

Sutcliffe Matson Law 09 279 8351 or 021 327 030

## LOCKSMITHS

Local Locksmith - Tony 536 5050 or 021 156 7370  
 Armstrong Smarter Security 0800 506 111

## LPG SUPPLIERS

Matagas 0800 954 427

## MARINE AND BOATING

Ovlov Marine Pine Harbour LTD 536 5249

## MECHANICAL REPAIRS

Maraetai Automotive 536 6542  
 Pohutukawa Motors, 57 Third View Ave, Beachlands 536 6664  
 Garaway Autos 022 395 6185  
 Luke's Garage Ltd 09 218 6442 / 022 301 0412

## MIRRORS

Howick Glass 535 4180

## OUTBOARD REPAIRS/ MARINE ENGINEERING

Eastern Marine - Mercury Certified Service Centre - Outboards,  
 stemdrive, petrol & diesel. 536 6252

## PAINTERS & DECORATORS

East Auckland Painting Ltd 027 619 2619  
 specialstlinings.co.nz We fix, stop, and paint 0800 54 64 64  
 Painta Property Services-Beachlands+Sth East Akl 021 101 6937  
 Interior / Exterior / Roof / Fences - mikegrubb@painta.co.nz  
 Paint, waterblasting, plaster, tidy up removal, 027 525 4024  
 aggregate sand delivery. Joel@insulape.co.nz

## PEST CONTROL

Coastal Pest Solutions (including rats, rabbits, possums, pest birds,  
 wasps & bees) 536 6020 or 0273 932 125  
 Professional Pest Control 536 6690 or 021 078 3622

## PET ACCOMMODATION

Fairfield Pet Lodge, Clevedon 027 222 0307  
 Pets at Whitford Spa and Stay (PAWSS) 530 8860

## PHARMACIES

Unichem Beachlands Pharmacy 536 6500, fx 536 6590

## PHYSIOTHERAPIST

Beachlands Physio beachlandspysio.co.nz 09 222 4120

## PLASTERING SERVICES

Solid Plastering, Bruce Parsons 021 981 812

## PLUMBERS

Dynamo Plumbing 0800 175 988  
 BF Brown Plumbing & Drainlaying 0800 477 455

## PLUMBERS & GASFITTERS

Ashby Plumbing & Gas 292 2445 or 0272 553 499

## PROPERTY MANAGEMENT

Rent People Ltd 0800 426 580  
 Ray White Lighthouse Licensed Real Estate 536 7011  
 Barfoot & Thompson Beachlands 536 4990

## PUMP SALES & REPAIRS

Auckland Electrical & Pump Services 536 4074, 0274 741 579  
 Malmaks Water Shop 530 8872, 021 353 158  
 Allwater Pumps and Supplies Ltd 09 536 5444, 027 536 5444  
 Clevedon Pumps & Filtration 027 479 7741

## QUARRY

Manukau Quarries 263 0220

## QUANTITY SURVEYORS

Hope & Associates - Residential estimating specialist 021 882 312

## REAL ESTATE AGENTS

Barfoot & Thompson Beachlands 536 4990  
 Barfoot & Thompson Whitford 530 8292  
 RE/MAX Clevedon 292 8388  
 Ray White Lighthouse Licensed Real Estate 536 7011

## ROOF PAINTING SERVICES

Master Tradesman. Text details for fast service: 027 517 8494  
 Visit our website: www.5starroofpainting.co.nz

## ROOF SOFTWASHING

Skyhigh Roof and Gutter Cleaning Ltd  
 Website: www.skyhigh.nz 021 951 719

## ROOFING SERVICES

Alba Roofing 021 584 530  
 Roofing & Spouting NZ Ltd 021 766 260

## SCAFFOLDING

Scaffold Connect Ltd 021 235 5963 or 09 576 5879  
 DTS Wright Scaffolding Ltd 021 239 4276

## SECURITY SYSTEMS

ADS Security Ltd (alarms & monitoring) 536 6860  
 Armstrong Smarter Security and Alarms 09 274 0999

## SEPTIC TANK CLEANING

SST Services phone Rob 09 2947611 or 0274 967430

## STORAGE

Beachlands Self Storage 021 281 5355

## SURVEYORS - LAND

McInnes, Read & Lucas Ltd 298 7288  
 Fraser Thomas Ltd 278 7078  
 Churchill Land Development Services Ltd 273 4182  
 Survey Plus Ltd 020 4 SURVEY (020 4 787839)

## TAXIS/TRANSPORT/SHUTTLES

Coast Shuttle - local hire & airport trips 536 6488 or 0274 722 613  
 Omana Shuttles - Airport Transfers 536 5935  
 Driving Miss Daisy 09 534 7712 or 021 174 9999

## TILING

Wall & floor tiling & waterproofing, phone George 027 534 3741

## TRAVEL - INTERNATIONAL & DOMESTIC

Clevedon Travel Brokers chrisshyashby@ttb.co.nz 027 273 9701  
 Travelselect Beachlands call Mark or Sam 536 6730

## TREE SERVICES

Coastal Cutters - coastalcutters@hotmail.com 021 196 6509  
 Jessep Contracting - JessepContracting.co.nz 022 607 4455

## TRUCK & BOBCAT HIRE

Murray Douglas Limited 027 498 5267

## TYRES - SALES & SERVICE

Maraetai Automotive 536 6542  
 Pohutukawa Motors 536 6664  
 Tyre Guard - Mobile Tyre Service, Call Mike 021 901 034

## UPHOLSTERY & CANVAS

Eastern Cover Centre. Boat & Outdoor Furniture Covers 535 7524

## VALUERS - PROPERTY

Property Valuations Ltd, Papakura 299 7406

## VETERINARY SERVICES

Franklin Vets - Pohutukawa Coast Shopping Centre, 538 0010  
 Beachlands, Open: Mon-Fri: 8am-6pm Sat: 9am-3pm  
 Pohutukawa Coast Vets - 43 Wakelin Rd, Beachlands 320 1472  
 Open: Mon-Fri: 8am-6pm Sat: 9am-12pm

## WALLPAPERING

Lucy Cui 536 5899 or 021 174 8466

## WATER DELIVERY

Beachlands/Maraetai Water Supply 273 9763  
 Clevedon Water 292 8099  
 Whitford Water Supplies 530 8164  
 Maraetai Blue Ltd 536 6437, 027 536 6437  
 Carlton Haulage 0800 420 246  
 Coastal Water Carriage 0508 262 7825  
 WET AZZ - www.wetazz.co.nz 0800 WET AZZ (0800 938 299)  
 A Plus Water 021 0727 163  
 PROWATER - Support Local, Ph Shane/Sheridan 021 530 727

## WATER TANK CLEANING & REPAIRS

Maraetai Blue Tank Cleaning Call Jacob 021 029 84170  
 Clevedon Pumps & Filtration 027 479 7741

## WATER TREATMENT

The Filter Guy Ltd 0800 159 858  
 Malmaks Water Shop 530 8872, 021 353 158  
 Allwater Pumps and Supplies Ltd 09 536 5444



# Recent Sales

Signs of our success

BARFOOT & THOMPSON  
L'ONGUEUR DE VIE  
Beachlands



**SOLD**

2 The Way  
*Maraetai*



**SOLD**

2 Harbourside Ct  
*Beachlands*



**SOLD**

242 Jones Rd  
*Hunua*



**SOLD**

66 Craig Rd  
*Maraetai*



**SOLD**

26 Pohutukawa Rd  
*Beachlands*



**SOLD**

200 Potts Rd  
Lot 7  
10,000m<sup>2</sup>  
*Whitford*



**SOLD**

17 Lydiard Pl  
*Beachlands*



**SOLD**

12 Lydiard Pl  
*Beachlands*



**SOLD**

26 Columbia Cres  
*Beachlands*



**SOLD**

9 Matarua Ave  
*Maraetai*



**SOLD**

71 Seventh View Ave  
*Beachlands*



**SOLD**

Lot 13/4 Ninth View Ave  
*Beachlands*





NEW LISTING

## BEACHLANDS

40 KARAKA ROAD



### TENDER

4pm Thursday 8 August (unless sold prior)

[barfoot.co.nz/894995](http://barfoot.co.nz/894995)

### VIEWING

003 OPEN HOME  
 SAT & SUN 1:00-1:30pm



### SPECIAL AGENTS 003

Ian, Jenny, Nicolette, Clare  
 Nicolette Hale 027 702 9157

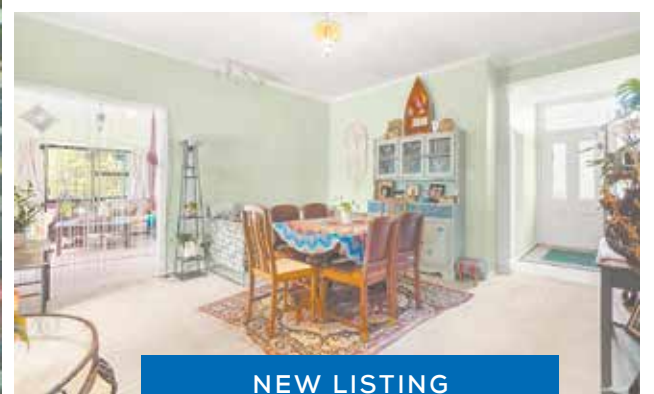


### Ian Boswell - 003

027 285 9314  
 Jenny 0204 000 2564

## SHOW AND TELL!

- Well maintained 2 storey brick and block home on a flat quarter acre fully fenced section
- Beautiful upgraded kitchen and new appliances. Gorgeous new upstairs bathroom
- Wide elevated sea views of Auckland City, Rangitoto and Waiheke Island & stunning sunsets
- Cool outdoor entertaining Tiki bar and spa pool. Double garage plus workshop area
- Watch our Special Agents 003 video tour



NEW LISTING

## BEACHLANDS

58 SHELLY BAY ROAD



### FOR SALE

\$1060000

[barfoot.co.nz/893882](http://barfoot.co.nz/893882)

### VIEWING

SAT & SUN 12:00-12:30pm

## Calling first home buyers & investors

Introducing an exciting opportunity not to be missed.

Whether you are a first home buyer, or an investor looking to renovate, flip, or just add to your portfolio, this flat well positioned 1024 sqm freehold corner site is ripe for the picking. Add an income producing minor dwelling, remove or rebuild, this one has something for everyone.



### Stuart Fitzpatrick

027 668 0287  
 s.fitzpatrick2@barfoot.co.nz



### Matthew Brown

027 549 4673  
 m.brown@barfoot.co.nz