

Pōhutukawa Coast Times

Issue 1531

28 June 2024

For the best results in today's market, deal with Ray White Beachlands
Market leaders on the coast



- The Winter Edition -
Check Out Our Full Range of Stunning Properties Online:
rwbeachlands.co.nz



FOR SALE

90 Maraetai School Road, Maraetai

Showstopper - Step into a world of unparalleled luxury and modern elegance at 90 Maraetai School Road, a stunning masterpiece that has rightfully earned its place in the Top 100 Houses of 2023 and won a prestigious Gold Award from Master Builders.

This extraordinary residence, split over two levels, is a testament to superior craftsmanship and sophisticated style. With a further 8 years left of the Master Builders Guarantee this home is designed to impress!

rwbeachlands.co.nz/BCH30962

Lighthouse Real Estate Ltd Licensed (REAA 2008)

4 🚗 1 🍷 3 🍽️ 2 🛋️ 1 📖 2 🏠 700 📏^{sqm}

For Sale
\$2,395,000

View
Sunday
2:15 - 2:45 pm



Brianne Bignell
021 400 979
brianne.bignell@raywhite.com

ALAN WHITE
ELITE
PERFORMER 22-23



Paula Kirkman
021 0290 8007
paula.kirkman@raywhite.com

WHY WAIT?



COMPETITION CREATORS®

Choose A Ray White Beachlands Auction For When Every Dollar Counts...

Our Auction results continue to impress in 2024!

With a typical Days On Market (DOM) of 33 and a 71.2% clearance rate within 90 days, versus Private Treaty, which typically sits around 54 DOM and with a 39.4% 90 day clearance rate, it is the Auction method that clearly outperforms all other methods of sale.

Stats updated and reflective of a 12 month rolling average sourced from internal market trends as at 23/06/2024

Auction Results Prevail in 2024
Talk to the team today about our process and how
Ray White Auctions work best!

Another Sold By Auction



Most Recent Case Study: 34B Cadwil Drive, Beachlands

Auction Held: SOLD PRIOR
 Location: The Shed @ Ray White Beachlands
 Days On Market: 8
 Total Number of Inspections: 10
 Pre Auction Offers: 1
 Registered Bidders: N/A
 Active Bidders: N/A
 Sold Prior for \$1,180,000

rwbeachlands.co.nz/watch-our-auctions-live



AUCTION

110 Second View Avenue, Beachlands

Nestled in the heart of original Beachlands, this property offers endless possibilities on a flat quarter-acre site.

- Addition of a sleepout, complete with a kitchenette and bathroom provides ample space for extended families or multi-generational living arrangements.
- Enjoy the luxury of a heated saltwater pool.
- Close proximity to the local shops, beaches and Beachlands School.

Don't let this opportunity slip away - this property is sure to be snapped up quickly!

rwbeachlands.co.nz/BCH30955

Lighthouse Real Estate Ltd Licensed (REAA 2008)

2 🚗 2 🚿 1 🏠 1012 📏^{sqm}

Auction
 The Shed @ Ray White Beachlands
 6:00 pm 1 July 2024
 (Unless Sold Prior)

View
 Saturday & Sunday
 12:45 - 1:15 pm



Brianne Bignell
 021 400 979
 brianne.bignell@raywhite.com



Paula Kirkman
 021 0290 8007
 paula.kirkman@raywhite.com

WHY WAIT?

Javelin talent prepares for World Champs debut



National javelin champion Douw Botes (left) is sworn in as a New Zealand citizen by JP Noel Kerr.

One of New Zealand's newest citizens is set to travel from his new home in Maraetai to Peru in August, to compete in the black jersey at the World U20 Athletics World Champs.

19-year-old Douw Botes took up javelin about 5 years ago when he was living in Limpopo, Johannesburg. When he emigrated from South Africa to New Zealand three years ago, he began to take the sport seriously and has since claimed the New Zealand Under 20 title, and the national Open title in the sport.

Douw's day job in the pro shop at Windross Farm Golf Course provides him with enough flexibility to commit to a rigorous training routine. Each morning his alarm goes off at 3.45am and he heads to the Manurewa Rugby Club gym for two hours, before training with Papakura Athletics Club at Bruce Pulman Park from 8-9am. He works from 10am-6pm,

CONTINUED ON PAGE 9

LICENSED TO SELL

Ian 027 285 9314

Jenny 0204 000 2564

Nicolette 027 702 9157

#1 Top Salesperson
Beachlands Branch 2024

BARFOOT & THOMPSON

SPECIAL AGENTS
003

We're here for **you**
and all your property
management needs!

BARFOOT & THOMPSON
PROPERTY MANAGEMENT

Beachlands
09 536 4990

RayWhite.
BEACHLANDS

Your Premium **Choice**
in Property Management

Ray White Beachlands
Lighthouse Real Estate Limited
Licensed (REAA 2008)

P : (09) 536 7011
E : beachlands.nz@raywhite.com
W : rwbeachlands.co.nz
A : 81 Second View Avenue, Beachlands



Visit us
226 North Road,
Clevedon 2248
Ph: 09 292 8656

Email: office@mortontimber.co.nz
Web: www.mortontimber.co.nz
Facebook: mortontimber.clevedon

FIT FOR A KING

GUM SLEEPERS 200X100X2.4M
(LOCALLY SOURCED) \$140 plus gst each

PREMIUM POSTS 2.4M (140-165) H4
\$25 plus gst each

PLYWOOD 9MM U/T NON STRUCTURAL
2400X1200 \$35 plus gst per sheet

To be sold as bundles

No2 1.8 quarters (75-99)diameter
100 in a bundle \$4.90 each post plus gst

No3 1.8 rounds (65-89)diameter
100 in a bundle \$3.90 each post plus gst

No3 2.4 rounds(65-89)diameter
50 in a bundle \$4.00 each post plus gst.



OPENING HOURS
MONDAY - THURSDAY 7:30AM TO 5:00PM
FRIDAY 7:30AM TO 4:30PM & SATURDAY 7:30AM TO NOON

INSIDE: Coasters cook up a storm at Food Rescue Masterchef p3

Support Local feature p4-5

RayWhite.
Second Generation Real Estate
EXPERIENCE the difference...
Ray White Beachlands
Lighthouse Real Estate Limited
Licensed (REAA 2008)
P : (09) 536 7011 or (021) 400 979
E : beachlands.nz@raywhite.com
W : rwbeachlands.co.nz
A : 81 Second View Avenue, Beachlands

EmbroidMe.
East Tamaki
We Supply & Brand
Uniforms & Promotional Products
Embroidery, Printing, Lettering, Dye Sublimation and more...
Cnr Smales and Springs Rds, East Tamaki - 09 265 0300

Mānawatia a Matariki.
Mānawa maiea te putanga o Matariki
Celebrate the rising of Matariki
Mānawa maiea te ariki o te rangi
Celebrate the rising of the lord of the sky
Mānawa maiea te Mātahi o te tau
Celebrate the rising of the New Year

Deadlines: Display advertising - 5pm Thursday. Classified and News - midday Friday

advertising@pctimes.co.nz | www.pctimes.co.nz

Pohutukawa Coast Times

GET IN TOUCH

E: info@pctimes.co.nz
W: www.pctimes.co.nz
F: facebook.com/pctimes
A: PO Box 5, Beachlands 2147

EDITOR

Leanne Chamberlin
 021 426 207
 leanne@pctimes.co.nz

ADVERTISING

Melody Cutfield
 021 0261 4467
 advertising@pctimes.co.nz

CLASSIFIEDS

advertising@pctimes.co.nz

DELIVERY/DISTRIBUTION

distribution@pctimes.co.nz

ACCOUNTS

Pam Rutherford
 accounts@pctimes.co.nz

The Pohutukawa Coast Times is distributed weekly to 6500 homes and businesses in: Whitford, Brookby, Beachlands, Maraetai, Clevedon, Ardmore, Alfriston, Kawakawa Bay, Orere Pt, Hunua, Paparimu

Member of the New Zealand Community Newspapers Association



The PC Times 20 years ago:
 25 June 2004: Upgrading Pine Harbour public boat ramp a priority



Weekly Tide Chart

Day	Low Tide	High Tide	Direction
28 Fri	5:58am ▼ 0.7m	12:14pm ▲ 3.1m	↔
29 Sat	12:46am ▲ 3.3m	6:52am ▼ 0.7m	↔
30 Sun	1:41am ▲ 3.2m	7:47am ▼ 0.7m	↔
1 Mon	8:44am ▼ 0.7m	3:09pm ▲ 3.3m	↔
2 Tue	9:42am ▼ 0.7m	4:11pm ▲ 3.1m	↔
3 Wed	10:41am ▼ 0.7m	5:12pm ▲ 3.1m	↔
4 Thu	11:37am ▼ 0.6m	6:08pm ▲ 3.2m	↔

MARINE FORECAST – VHF CHANNEL 19
 AUCKLAND FORECAST – 0900 999+ YOUR STD

Pine Harbour Electrical
 Unit 1A Pine Harbour Marina
 P: 536-6177
 W: www.phe.co.nz

Guest editorial by MP for Papakura Rt Hon Judith Collins

Dear Constituents,
 Recently I had the pleasure of attending the Pōhutukawa Coast Community Patrol's Annual General Meeting where I met the volunteers who give their time to support our communities, contribute to our safety and promote the general well-being of our neighbourhoods around Beachlands, Maraetai, Whitford and the rest of the Pōhutukawa Coast. Patrolters report on a variety of events from illegally dumped rubbish, stolen or abandoned vehicles to graffiti and other anti-social behaviour. The Patrols also very importantly provide extra eyes and ears for Police. Community Patrol groups are looking for new volunteers to become patrolters so if you would like to volunteer and contribute to your community or just find out more, please email administration@papakuracrimewatch.org.nz or chairpersonpccwp@gmail.com. Patrolters work in pairs from a supplied vehicle and are required to comply fully with all safety procedures that apply. As the Patron of the local Papakura patrols, I would be very grateful if you could consider signing up to this voluntary work.

King's Birthday Honours
 I am very pleased to congratulate Mrs Joan Withers now Dame Companion of the NZ Order of Merit, who received the recognition in the King's Birthday Honours awarded in 2024 for her work in sustaining businesses, improving governance and promoting the place of women as leaders in business. Dame Joan has extensive experience in the media industry and has also been a director and chair of many state sector and private companies like the Warehouse Group, Auckland International Airport and TVNZ. She is currently Director of Sky Network TV, ANZ New Zealand and Origin Energy. Dame Joan has promoted Global Women and the 25 Percent Group and co-founded OnBeingBold, an annual

event empowering women leaders, which includes Year 13 girls. I thank Dame Joan for her service to the community and offer my congratulations again. **More Budget information:** I am sure you have heard that there are sizeable job cuts in Government departments but what we are not hearing about is all the extra spending that is reduced when you scrap unfilled jobs and streamline staffing – less equipment, less office space and less administration is needed. Ministers are working to obtain greater efficiency and productivity from their departments by employing targets and reporting, where appropriate. In Parliament, Ministers have identified 240 individual savings to reduce government spending which grew by 50 per cent in the six years from 2017. The savings will be directed to providing our tax relief package for hard-working New Zealanders, and also to training additional teachers, supporting Gumboot Friday to provide youth mental health services and other frontline services. The Coalition Government is aiming for effective, efficient and responsive public services and surpluses for investment in a stronger, more productive economy. My recent announcements and ongoing work in the Science Technology and Innovation and Space portfolios, show that these sectors are leading the way to improve our export returns and to raise our productivity and make the most of the opportunities that are in front of New Zealand. I have launched a policy to allow greater use of biotechnology around genetic modification and enhancement. This policy will be extensively consulted on by those with specialist knowledge and the public, but ultimately it will allow GM and GE trials in New Zealand conditions and without the expense of doing trials overseas. The Coalition Government has helped employers by restoring 90-day trials and cancelling compulsory union bargaining. Ultimately this will lead to higher

employment and productivity. We have introduced fast-track rules to accelerate investment and we are working on a path of systematic RMA reform. To help the farming and agricultural sectors we have reviewed and modified or cancelled, a raft of rules and regulations around SNAs, freshwater, winter grazing and slope rules. I think it is positive to know that Defence will receive \$571 million in support over the next four years. There are many recent examples of the value of Defence Force investment, such as their efficient evacuation of New Zealanders who were stranded in Noumea due to the unrest and protests there. And more recently supplies were airdropped by our Defence Force to Papua New Guinea following the devastating earthquake-triggered landslides. We are grateful to those departments and agencies who have delivered on their savings targets. They have demonstrated that better government doesn't mean bigger government. Reduced Government spending allows for more support for families in the cost-of-living crisis and allows for greater spending on hospitals, schools, and safer streets for New Zealanders.

Best wishes and take care,
 Judith

The views expressed in the Pohutukawa Coast Times Guest Editorial column are not necessarily the views of the editor or publisher.



SUTCLIFFE MATSON LAW

LAWYERS SERVING THE POHUTUKAWA COAST

38A Wakelin Road, Beachlands
 Available Monday - Friday, by appointment

Conveyancing, Refinancing, Wills,
 Powers of Attorney, Business Transactions
 Family & Commercial Law
 and other general legal needs.

We are happy to meet after hours
 at your home for your convenience.

Ph: 09 279 8351 or Braden: 021 327 030
 braden@smlaw.net.nz | breanna@smlaw.net.nz
 www.sutcliffematsonlaw.net.nz



BREANNA FULLER
BCOMLLB (HONS) | ASSOCIATE



BRADEN MATSON
MA/LLB | DIRECTOR



**Pohutukawa Coast
PRESBYTERIAN CHURCH**
 "A Voice of Positive Christianity"

**"Give light and
people will find the way."**
 - Ella Baker -

Easter Services: 9am
 Plus Kids' Programme
Minister: Mark Chapman
 For more information contact:
 Lyn 5366774, lyn.41buchanan@gmail.com

29 March Good Friday Service
31 March Easter Sunday Celebration

Playgroup Tues & Wed 9am - 12pm
 Food bank 027 304 4998 Phone or text

5 Jacobs Way, Maraetai



PRIMA

COLLISION REPAIRS

Complete panelbeating and car painting

East Tamaki: Unit B 154 Harris Rd, East Tamaki, Auckland 09 274 4778
 Manukau: 2/117 Kerrs Rd, Manukau, Auckland 09 268 9340

Coasters cook up a storm at Food Rescue Masterchef

A lemon meringue-inspired pie with a noodle base proved a hit with judges earlier this month, when aspiring chefs came together at the Beachlands Memorial Hall to compete in a 'Food Rescue Masterchef' event.

The joint initiative between the Pōhutukawa Coast Food Collective partners and the Takutai Youth Intergenerational Project saw five teams of mixed seniors and young adults completing Masterchef-style challenges, culminating in a cook-off and a meal enjoyed by all.

The event began on Friday 7 June with evening presentations on Food Rescue by Stephanie Pollard (Takutai Foodbank), Meg Sheppard (Food Together Pop up) and an interactive presentation on growing and using herbs by Karen Titulaer (Coastal Community Garden).

Stephanie says a whopping 10,699kg of food was rescued by Kiwi Harvest and donated to our community over the past year. The number equates to over 30,000 individual meals.

"On the one hand we see vast amounts of perfectly good food wasted and on the other we see families struggling to put nutritional food on the table every day. This has never seemed right," says Stephanie.

"We are grateful that our Food Collective partners, including Community Lunches, Bellyful East Auckland, Kiwi Harvest, Food Together Pop up, Coastal Community



Winning team Gastro Delights pictured with Food Rescue Masterchef judges.

Garden and Takutai Foodbank work to provide meals and food to our community, recognising the importance of food as both a basic human right and its importance in bringing people together in a social context. This is what inspired the concept of our Food Rescue Masterchef event!"

On Saturday 8 June, teams were provided with mystery ingredient bags filled with food rescued within the local community. The food was donated by Kiwi Harvest, Food Together Pop up at Beachlands Baptist Church, Coastal Community Garden and Takutai Foodbank. Teams had 3 hours to create a menu from their sometimes 'odd' assortment of food, having to barter with other teams to swap and share food items and implements.

The team of five judges included qualified chefs Ian Twist and Phil Holloway,

Andrea Martin (East Auckland Bellyful), Jodi Litherland (Community Lunches) and senior Jack Patrick. The judges were impressed by the quality of meals prepared, and the clever use of food rescue ingredients.

Team Gastro Delights was awarded overall winner, with judges noting they could not fault the team's menu which included a Thai curry with homemade naan breads and a lemon meringue-inspired pie with a noodle base.

"The judging team were outstanding, giving freely of their time and knowledge," says Stephanie. "The event was considered a great success by all."

Takutai Youth Coordinator Paula Browne said it was fantastic to see the generations working so well together and having fun along the way. "The teams were really in it together and what they produced was way beyond expectations. A huge thank you to our donors, judges and participants."

The Takutai Trust has already been asked if they will run the event again, to which they say 'watch this space'.



Team Gordon Ramsay's Cousins turn food waste into mouth-watering dishes.

One of New Zealand's best and longest running Antique Fairs!

QUOTA PAPAKURA

Quota Papakura Inc. Presents the annual **ANTIQUE FAIR**

OPENING HOURS
Sat 6th – Sun 7th July
 9.30am – 4pm
 \$8 Entry

DRURY SCHOOL HALL
 Young Crescent, 2113

Café on site Enquiries to 027 298 3854 or 021 334 055 or 027 323 4895
 Proceeds to local community organisations
 Quota Papakura Inc. Charities Commission Registration #CC23580

Honouring and Celebrating Life

Our approach, philosophy and high standards are ideals we are proud to uphold. Our compassion, values and dedication when caring for the bereaved are just a few of the qualities that form the heart of Resthaven Funerals.

RESTHAVEN Funerals

HOWICK. Cnr Picton & Walter MacDonald Sts | Ph. 533 7493
MANUREWA. 88 Great South Rd | Ph. 267 2530

www.resthavenfunerals.co.nz

MEMBER Funeral Directors ASSOCIATION OF NZ

OUR LADY STAR OF THE SEA CATHOLIC PARISH

We celebrate Mass at 4.30pm on the first Saturday of the month. On other Saturdays there will be Celebration of the Word with Holy Communion.

St Hilda's Church,
 3 Wakelin Road, Beachlands

Visit our website for details
www.beachlandscatholic.com

Howick FUNERAL HOME
 New Zealand owned & operated since 1993

A privilege to care for your family

Every life is special, we understand that. Let us pay tribute to the life of your loved one and celebrate the unique way they have touched you, your family and those around you.

Robert Johnstone & Kevin Kelleher

For a personal, professional service contact us today to discuss your options:
 35 Wellington St, Howick | Phone 534 7300 | www.howickfuneralhome.nz

MALMAKS WATER SHOP

CLEAN WATER

PH: 530 8872
 Whitford Village
www.malmakswater.com

WE ARE NOW AN AUTHORISED DEALERSHIP FOR **DAB & GRUNDFOS**

REPAIRS & MAINTENANCE ON ALL PUMP BRANDS

STOCK AND SELL

- Pumps • UV Lamps
- All in one pump box
- Carbon & Sediment Filters
- Salt • Bore Softeners

• DAB • GRUNDFOS • GREENWAY • VIQUA
 • ATLAS FILTRI • ALPINE PURE • STERILIGHT
 • PURETEC • DAVEY • HANSEN

SERVICING POHUTUKAWA COAST FOR OVER 10 YEARS

Support Local!

SPONSORED CONTENT

Exciting Adventures Await: Te Puru's July School Holiday Programme and Beyond

- by Te Puru

Te Puru is gearing up for an exhilarating end to Term 2 and an action-packed start to the July school holidays with a vibrant array of activities for children and teens. The July school holiday programme promises two thrilling weeks filled with diverse experiences designed to engage and inspire young minds. Week 1 kicks off with the eagerly anticipated return of gymnastics and parkour day, offering participants the chance to flip, jump, and tumble in a safe and supervised environment. Following this high-energy start, adventurers will embark on a journey to the maritime museum, where they will explore seafaring history and have

the opportunity to sail, learning the ropes firsthand on the open water.

Week 2 brings its own set of excitement, starting with a trip to the movies for a cinematic escape, followed by a visit from Nano Girl. Nano Girl will inspire curiosity and innovation among attendees, making scientific concepts come alive with hands-on activities and demonstrations. Registrations for these exclusive holiday experiences are open now on Te Puru's user-friendly website, www.tepuru.co.nz. Given the limited availability, interested families are encouraged to secure their spots promptly to ensure their children don't miss out.

Looking beyond the holidays, Te Puru is proud to introduce an enhanced basketball programme in Term 3, scheduled for Tuesday evenings. This revamped programme caters to a range of abilities and age groups, ensuring inclusive participation and skill development for all. The term will feature 8 weeks of specialized coaching, where participants will receive personalized instruction to



hone their basketball skills. As the term progresses, the focus will shift to team-based training, culminating in an exciting end-of-term tournament that promises friendly competition and camaraderie among players.

The basketball programme at Te Puru aims not only to improve individual skills but also to foster teamwork and sportsmanship, providing young athletes with valuable lessons both on and off the court. Registrations for the Term 3 basketball programme will open on Monday 8 July, offering families ample time to plan and prepare for their child's involvement in

this dynamic sporting initiative.

Te Puru continues to be a hub of activity and learning, committed to offering children and teens memorable experiences that blend education with enjoyment. Whether exploring the seas at the maritime museum, delving into scientific marvels with Nano Girl, or perfecting their dribbling skills on the basketball court, participants are sure to find inspiration and excitement at every turn. Embrace the opportunity to enrich your child's school break and sports journey with Te Puru – where every experience is designed to ignite passion and potential in young minds.



WHITE FENCING
0800 957 868

Registered Fencing Contractor
No. 702

ph: (09) 2928 064
mob: (0274) 957 868
Fax: (09) 2928 063
TDWKKC@xtra.co.nz

428 Kawakawa Bay Rd
Clevedon
RD5 PAPAURA

TONY WHITE
ALL TYPES OF RURAL FENCING
& ASSOCIATED WORKS

HOLIDAY PROGRAMME

JULY 2024

Registrations are now open via our website www.tepuru.co.nz

Full Day 7.30 am to 6.00 pm: \$50
Part Day 8.30 am to 3.30 pm: \$45

In-House Event: \$60
Trip Day: \$65



<p>Monday 8th July</p> <p>Gymnastics & Parkour</p> <p>Unleash your inner ninja warrior. Join us for a day of challenging our bodies and pushing ourselves outside their comfort zones. Dive, roll and jump your way into the Holidays with Coach Maddie and the Team.</p> 	<p>Tuesday 9th July</p> <p>Parks, Parks, & More Parks.</p> <p>Visit some of the great parks the Pohutukawa coast has to offer. Morning tea at Omana Park, with Mags the local Park Ranger. Then we are off to The Pirate Park for Lunch enjoying ice blocks by the beach. Explore the bush, shore and beauty we are so lucky to live by. Kids are welcome to bring scooters (helmets are a must)</p> 	<p>Wednesday 10th July</p> <p>Sports</p> <p>Today is all about sport! We will have a go at bowls, AFL, Beach sports, racket and net sports, Modified sports, mind sports and much more. Give running, rowing and biking ago in our indoor Triathlon course. Compete as a team or as an individual. This day provides something for everyone even if sport isn't your favourite thing to do.</p> 	<p>Thursday 11th July</p> <p>Maritime Museum & Sailing</p> <p>There will be a ratio of 1:5 on this day. limited spaces available* Always wanted to see what it would feel like to sail the seas? Join us for a day of everything Maritime. Catch the ferry into town to explore the Maritime Museum. Board the Ted Ashby Heritage sailing boat and help hoist the sails and enjoy the sites of the beautiful harbour.</p> 	<p>Friday 12th July</p> <p>Master Chef</p> <p>Who will be Te Puru's Master Chef 2024?? Older kids will compete in the 2024 master chef cook off where they will have to cook two different recipes and present them to the judges. Younger kids will learn to bake and make simple recipes they could make for their families at home</p> 
<p>Monday 15th July</p> <p>Amazing Race</p> <p>Race around Te Puru answering questions and completing challenge while competing against other teams. Will your team be able to complete all the detours to win the race?? Come and get amongst the competition</p> 	<p>Tuesday 16th July</p> <p>Nano Girl & Scientific Engineering</p> <p>Whose bridge is the strongest? whose egg will survive the fall? Get ready to design, build and test your ability to design safe housing for an egg and a bridge that can hold some heavy weight. We have Nano girl coming to perform bubble experiments with everyone getting the chance to stand inside a giant bubble.</p> 	<p>Wednesday 17th July</p> <p>Movie Trip Day</p> <p>Sit back relax and enjoy some popcorn and movie. Travel to Monterey Cinema in Howick and watch Despicable Me 4 in your own private theater. Then spend the afternoon creating back at Te Puru.</p> 	<p>Thursday 18th July</p> <p>Screen Painting & Nerf Wars</p> <p>Have a go at creating your own clothing brand! Design a cool logo then print it using fabric paint onto any piece of clothing you like. BYO clothes, Print a t-shirt for the whole family. Put the paint down & pick up a nerf gun for an afternoon of nerf gun battles. Play games like capture the flag and go home stay home nerf gun style.</p> 	<p>Friday 19th July</p> <p>Olympics</p> <p>Come and celebrate the upcoming Olympic games with our Te Puru Games. Choose a country and compete to win medals throughout the day. Which Country will come out on top?</p> 

For More Information Contact: Sport@tepuru.co.nz

Support Local!

SPONSORED CONTENT

GP hangs up stethoscope



- by Beachlands Medical Centre

To our patients and colleagues, we wish to advise you that our wonderful GP Dr Rowena Poole (pictured above) is retiring on 18 July. After many years with Beachlands Medical working alongside Dr Barry Claridge (retired) and Dr Michael Clarke it is time to hang up the stethoscope. We sincerely wish Rowena a happy and adventurous retirement - it is well deserved, and although we will miss her terribly, we know she will enjoy her time with family and friends. From all the team at Beachlands Medical, Happy Retirement, Ro.

Vet advice for relieving osteoarthritis discomfort in older pets

- by Franklin Vets

Abel is a 12-year-old pet heading dog who had been struggling with his osteoarthritis as he got older. His owner had noticed that Abel was slowing down a bit and wasn't keeping up with the quad bike like he used to. His decreased mobility became especially noticeable as the weather cooled down and when a new puppy came on the scene.

Abel's owner brought him in for a consultation to see what could be done to help him feel more comfortable. On examination, we confirmed that he had discomfort around his hips and legs.

We recommended that Abel start on the joint supplement Antinol Rapid, along with the Royal Canin Mobility diet. His joint disease was severe enough that we also recommended pain medication for Abel. The most common pain medications for arthritis in cats and dogs are non-steroidal



anti-inflammatories. These are processed by the kidneys and liver, so it's important to ensure these are functioning well before starting on long-term medication.

Our in-house blood and urine tests indicated mild liver enzyme elevation which meant that non-steroidal pain

relief options wouldn't be the most suitable for Abel, so we suggested an alternative called Beransa.

Beransa is a monthly injectable that works differently from other pain medications. It specifically targets Nerve Growth Factor and is eliminated with minimal involvement of the liver and kidneys. Abel was given his first injection in the appointment.

We saw Abel for his second dose 4 weeks later and his owner reported that he seemed much happier, was more tolerant of their puppy, and back to wanting to chase the quad. We recommend a slow return to activity following Beransa as we don't want dogs to injure themselves when they are suddenly relieved of pain and discomfort.

Franklin Vets has parking on both sides of the clinic, with an automatic door in the carpark off Mahutonga Ave. Perfect if you have your hands full.



BEACHLANDS MEDICAL CENTRE

PH: 536 6006

Mon 8.15-5.00 Tues 8.15-7.30
Wed 8.15-5.00 Thur 8.15-5.00
Fri 8.15-5.00 Sat/Sun CLOSED

No late nights during school holidays & closed statutory holidays. Hours may vary please check our Healthpoint website.

Book appointments online at managemyhealth.co.nz

Doctors:

Dr Nigel Brown
Dr Michael Clarke
Dr Holger Konrad
Dr Rowena Poole
Dr Nikola Retford
Dr Rebecca Starr
Dr Andrew Reid
Dr Nagham Hawa

Other services:

Psychiatrists, Counselling services



129A Beachlands Road, Beachlands
POHUTUKAWA COAST SHOPPING CENTRE
www.beachlandsmedicalcentre.co.nz



Our services for your pet

Our BESTPRACTICE Beachlands clinic offers:

- Health checks and nail trims
- Vaccinations
- Free Nurse dental and weight checks
- Acupuncture
- Elective, emergency and exploratory surgery
- Dental procedures
- Post-operative intensive care, oxygen, fluids, X-rays and blood testing all on site if required



1/43 KOUKA RD, POHUTUKAWA COAST SHOPPING CENTRE
PH 538 0010 | BEACHLANDS@FVS.CO.NZ
Facebook: @FranklinVetsPets Instagram: @FranklinVets
Book online @ WWW.FRANKLINVETS.CO.NZ
Open hours: Mon-Fri 8am-6pm, Sat 9am-3pm



FOR SALE

Turanga Creek Estate, 34 Brownhill Road, Whitford

Nestled on 2922m² of land behind security gates in Whitford stands an opulent Italian inspired masonry Villa. You will feel as though you have just driven through the Italian countryside when you arrive to discover this beautiful serene picturesque setting.

This grand residence was built with love by the owners as their forever home, meticulously constructed from solid masonry, the craftsmanship is evident throughout. This estate caters to all the practical needs of modern living while offering exclusivity and privacy, prompt viewing encouraged.

rwhalfmoonbay.co.nz/HLF30797

WHY WAIT?

4 1 2 1 4 5

Asking Price
\$4,499,000

View
Open Home
Sunday 2:00 - 3:00pm or
By Private Appointment



Anita Jamieson
021 530 130
anita.jamieson@raywhite.com

SPORTS - Results from 22-23 June

Beachlands Maraetai Football Club



Blue U9 played Fencibles United AFC White U9 POD Aitor Macpherson Lamberto
White U9 played Lynn-Avon United AFC Vipers U9 POD Alfie Andrewes
Black U9 played Fencibles United AFC Mako Sharks Black U9 no POD submitted
Blue U10G played Metro FC Kowhai U10G POD Georgia Rositer
White U10 played Ellerslie AFC Yellow U10 POD no POD submitted
Black U10 played Central United FC Asteroids U10 POD Theo
Blue U10 played Eastern Suburbs AFC Blue U10 POD Tyler Jones
Blue U12 played Eastern Suburbs AFC Gold U12G no POD submitted
Black U12 played Central United FC SPC Toa U12 POD Lucah Balemi
Blue U13 Waiheke United Orcas U13 no result submitted
U14G beat Pukekohe AFC Phantoms U14G 5-3 POD Lily Snell
Rebels U15G lost Franklin United FC U15G 2-3 POD Gabrielle Dalton-Wilson
Blue U15 beat Auckland United FC Wanderers U15 D3 4-2 POD Ryan "Rhino" Walton
Atletico Beach lost to Drury UFC Bellancas D7 South 0 - 4 POD Ashton Hands
U23 v Waiheke United AFC U23 no result submitted
NRFL2 v Waiheke Utd AFC no result submitted
Rebels M40/4 beat Metro FC Equity Rustics M40 5-1 POD Brendan
Coasters M40/4 lost to Western Springs AFC Stallions M40 0-6 POD Chris Martin
Legionnaires M40/3 v Fencibles United AFC East Chinese M40 no result submitted
Lions M45 lost Western Springs AFC Royal M45 0-3 POD Matt Hamill
WCL Bay Olympic WCL no result submitted

Pohutukawa Coast Netball Club



Premier vs Livewires: S1 Kauri - Loss 35 - 41
Hihi vs Te Ruapotaka Whanau: Black - Win 28 - 17
Falcons vs Sunnyhills: S4 - Loss 23 - 37 - POD Natasha Cockerall
Wekas vs Sunnyhills: S8 - Win 30 - 26 - POD Caprice Howes
Pukekos vs Wakaaranga: S2 - Loss 13 - 30
Kererus vs Shelly Park: S4 - Loss 24 - 27
C1 vs Shelly Park: C3 - Loss 22 - 29 - POD Kaira Matson
C2 vs Shelly Park: C6 - Loss 18 - 34 - POD Olivia Anderson
J1 vs CBNC: J1 - Win 36 - 15 - POD Zoey Colenso
J2 vs Howick:Teal - Win 17 - 12 - POD Charlie Klokier
J3 vs Mellons Bay: J4 - Loss 6 - 25 - POD Rylee Milner
J4 vs Monster Boot Camp: J5 - Win 18 - 0 - POD Paige Hill
J5 vs Howick: Topaz - Loss 7 - 14 - POD Teagan Cleary
Fantails - POD the whole team
Tuis - POD Taylor
Keas - POD Daria
Silvereyes - POD Ella
Kiwis - POD Ella, AWHI Harlow

Beachlands Maraetai Junior Rugby



U11/Y6 v Manurewa White 65/ 35 POD: Colt Overend, TOD: Levi Smith
Y8-U13 Navy v Karaka 7/77 POD - Astin Wilson, TOD - Jackson Donnelly Vaega
Y2 BMRC Orange vs Y2 Karaka Red Draw 14 all POD Esther Halberg, ROD Kora Stevenson
Y3 BMRC v Rewa Black 65/85 POD Jesse Neal, TOD Harvey McQueen
Y7 BMRC Navy vs Y7 Pukekohe Green 0/83 POD Caleb Rowson, TOD Leyton Goodwin
Y2 BMRC Navy vs Ardmore Red 65-55 POD Noah Tuyay, ROD Poppy
Y4 Mako v Pukekohe Green 80/49 POD: Landon van der Berg, TOD: Lewis Farrell
 Sportsmanship: Dylan Ross
Y8 Orange v Maramarua 78/24 POD Ty Wade, TOD Will Hammond
Y1 Navy v Ardmore-Marist Blue n/a POD: Issac Boggs, ROD: Beau McCarroll
Y5 U10 BMRC v Patumahoe 25/30 POD :Luke du preez, TOD : Aidan hignett-morgan
Y6 Navy v Waiuku Green 39/60 POD - Julian Li, TOD - Kai Narula
U9 girls Rippa v East Tamaki 65/80 POD Hayley Maxwell, ROD Aria Fourie
Y1 Orange vs Manurewa y1 19-18 POD: Mason Davies Lawson, ROD: Joshua Van Voorst, TOD: Charlie Tullett
Y5 BMRC Orange Vs Karaka Red 40 - 5 POD - Cullam Lee, TOD - Kayde Royal
The U15 Fast Ferns v College Rifles U15 85-15 POD: STC, ROD: Georgie Hamilton

Clevedon Football Club



Comets U6 POD Lucas Waters, Merit Award Arthur Neilson Vickers
Cardinals U7 POD Walter Dowie, Merit Award Isla Popping
Cadets U8 POD Harry Mulloy, Merit Award Harvey Millar
Chiefs U9 v Drury UFC Wolves POD 2015 Fergus Nielsen Vickers and Alexander Pennell
Cyclones U10 v Manurewa AFC Blue POD Jack Harris, Merit Award Thomas Barclay
Colts U11 u11 Festival
Cheetahs U12 v Mangere United FC Tubuna POD Harry Laurensen, Merit Award Patrick Fleming
Cobras U13 v Manukau City AFC Kedgley Eagles POD Ed Burton, Merit Award Arlo Pilkington

URGENT SALE

New Zealand | **Sotheby's**
INTERNATIONAL REALTY

177A Jones Road, Drury

3 2 5 Floor: 372 sqm Land: 7.47 ha

Vendors say present all offers. High above Clevedon, this hilltop home offers stunning 360° views over Clevedon and Hunua valleys, with Rangitoto, Coromandel, and the Sky Tower visible on the horizon. Crafted from over 500 hand-selected Douglas Fir logs milled in Rotorua, NZ. The property has been meticulously renovated to a condition surpassing its original state. The impressive logs create a unique warmth and cosiness akin to something out of "Yellowstone". Extensive Kwila hardwood decking wraps around the home on the lower level offering multiple options for entertaining or relaxing no matter the weather. A spacious three-bedroom floorplan allows for three additional bedrooms to be created if desired. Upstairs, the master suite's private balconies showcase panoramic views accompanied by idyllic birdsong. The majority of the expansive 18+ acres comprises pristine native bushland ensuring unobstructed views and easy care. A sheltered paddock accommodates a pony or sheep or provides a stunning building platform for a cabin. Extensive garaging, games area, Finnish sauna, chicken coops and tiered gardens complete the picture.

OPEN HOME: Sunday 11:00 - 11:45am or viewing by appointment

PRICE BY NEGOTIATION

VIEW: nzsothebysrealty.com/SED10020

SARAH RICHARDSON 021 711 156



Scan to see more photos



FOOD & ENTERTAINMENT GUIDE

4 Traditional Pizzas and 4 Sides DELIVERED from \$59.90 ONLINE CODE 22861* Open: Sun-Thu 11am-9:30pm
 *T&Cs apply. Fri & Sat 11am-10pm
 Ph: 0800 30 40 50 or 09 951 3959
 www.dominos.co.nz
 E: beachlandsdom@gmail.com



VINO ALTO
 DINING • WEDDINGS • FUNCTIONS
 424 Creightons Rd, Clevedon, Auckland 2582
 PH 09 292 8845 • enquiries@vinalto.co.nz
 OPEN: Thur and Fri 5pm - late
 Saturday 12pm - late, Sunday 12pm -4pm



Ambrosia
 (09) 536 4151
 Monday to Friday 10:00am - 11:00pm
 Saturday & Sunday 8:00am - 11:00pm
 44 Third View Ave, Beachlands
 The best of European Cuisine



HALLERTAU CLEVEDON
 26 CLEVEDON-KAWAKAWA RD, CLEVEDON, AUCKLAND — CLEVEDON@HALLERTAU.CO.NZ — 09 869 2989
 OPEN — MON & TUE: CLOSED — WED & THU: 4PM-10PM — FRI & SAT: 12PM-10PM — SUN: 11AM-9PM



Pinocchio
 OPENING HOURS
 Tuesday - Sunday: 5-9pm
 For bookings or takeaway: 09 217 1684 | 021 2144790
 44 Kouka Road, Beachlands
 @ pinocchionz Pinocchio Pizza Pasta & more



THE FRANKLIN
 TAPHOUSE & KITCHEN
 Open 7 days from 12pm-late
 Woodfired pizzas
 Fri/Sat/Sun 12pm-late
 BOOKINGS RECOMMENDED
 Ph: 536 5978
 www.thefranklinpub.co.nz



SUNKIST BAR • KITCHEN
 OPENING HOURS
 Tuesday - Thursday: 3-10pm
 Friday - Sunday: 12pm till late
 027 208 6942
 190 Jack Lachlan, Pine Harbour
 Small sharing plates
 Cocktails
 Marina view



BEACHLANDS CHARTERED CLUB
 Pōhutukawa Coast's only not-for-profit Chartered Club since 1948
 Open 7 days a week
 Mon & Tues 4pm-Late
 Weds-Sun 3pm-Late
 2 Weekly Membership Draws
 Fishing and 8 Ball Section
 Fortnightly Quiz Nights
 Free Pool & Darts
 Kids Room
 Gaming Lounge
 Free* Function Hire



**ADVERTISE IN OUR FOOD & ENTERTAINMENT GUIDE,
 JUST \$20/WEEK. EMAIL ADVERTISING@PCTIMES.CO.NZ**

BARFOOT THOMPSON & Student Voice

LOCAL STUDENTS' NEWS, VIEWS & LITERARY TALENT

This column features news, views and literary talents of students from Beachlands, Maraetai, Clevedon, Brookby, Hunua, Paparimu, Oere and Ardmore Schools.

One student featured each week will be presented with a certificate and a \$20 book voucher, thanks to Barfoot & Thompson's Beachlands and Whitford branches.



This week's voucher sponsored by Matthew Brown

DREAMGIVER!

White clouds were moving slowly across the cold windy sky. Then suddenly a flash of light zoomed past in the dark sky. Sneakily the fairy opened the window into the children's bedroom. Then it floated gently down. Slowly and quietly the magical fairy cracked the first golden egg beside the cosy bed. Inside each of the glowing eggs there were magical dreams!

- by Imogen Way, Hunua School

CLEVEDON PUMPS & FILTRATION

Servicing Clevedon & surrounding areas for over 10 years

- New Installations and Maintenance of all Pump & Water Filter Brands
- Specialist Bore Pump Repairers & Installations

Contact: Geoff Peck 0274 797 741 | geoff.peck@clevedonpumps.co.nz

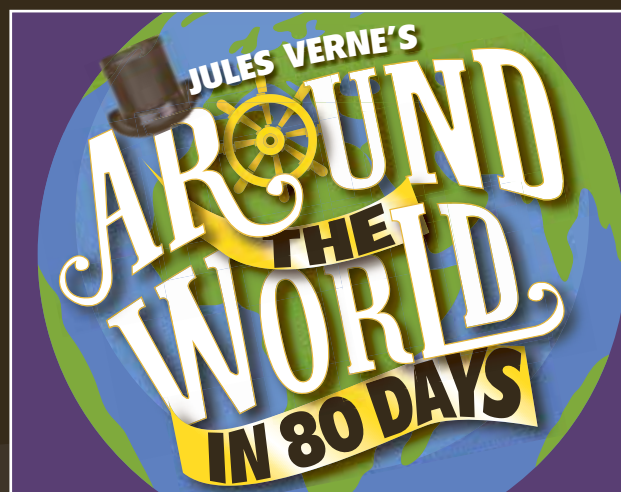
Love the Theatre?

Become a Showcard Subscriber

Get a 2024 Showcard Subscription and save up to 20% across our five main house productions throughout the year. With early bird priority bookings and no booking fees – the more you see, the more you can save!

Read more and subscribe now at hlt.nz/showcard

COMING SOON TO HOWICK LITTLE THEATRE



6 - 27 JULY

Adapted by Laura Eason

Directed by Nathan Hey

Javelin talent prepares for World Champs debut

CONTINUED FROM PAGE 1

eats six meals a day and is in bed by 8.30pm! It's a routine he sticks to 6 days a week. In his downtime he is also a keen golfer, playing off a 6.5 handicap.

Heading into the World U20 Champs, Douw says he is feeling "pretty good" about his chances. He threw 68.26m in Christchurch in February this year to quality for the champs. "I think everyone is really close to each other so it will just depend on who is better on the day. If I throw a 72m-plus, I could potentially get a medal. I've thrown close to it, and I feel like I could do it but it hasn't happened just yet. Making the top 8 would be pretty good."

Douw says his passion for the sport centres around the process of being a better athlete, training and seeing himself progress over time.

"It's good to be able to do what you love, and travel at the same time. Showing up at the gym in the mornings and having everyone to train with is good, you kind of just build a bond with everyone." Two of Douw's training friends will also travel to the World Champs to compete in discus and shotput.

Once the World Champs are over, Douw says his sights will be set on the next Commonwealth Games in two years, and

the 2028 Olympic Games.

Douw became a New Zealand citizen at a special ceremony held at Justice of the Peace Noel Kerr's home in Maraetai on Sunday 9 June. "It feels pretty unreal to be honest. I'm pretty proud, it's something I've thought about for a long time. We came here for a better lifestyle and now that I can finally be a citizen, it means a lot to be honest."

Maraetai is a long way from Limpopo, and Douw had to learn English as a second language when he arrived in Aotearoa. Now he says he enjoys his new life on the Pōhutukawa Coast. "It's a good little area, close to the beach, close to everything. Good views in the morning!"

Douw is currently fundraising to get himself to Peru in August. Anyone wishing to support his participation in the World Champs can contribute via his Give A Little Page: givealittle.co.nz/cause/douw-throws

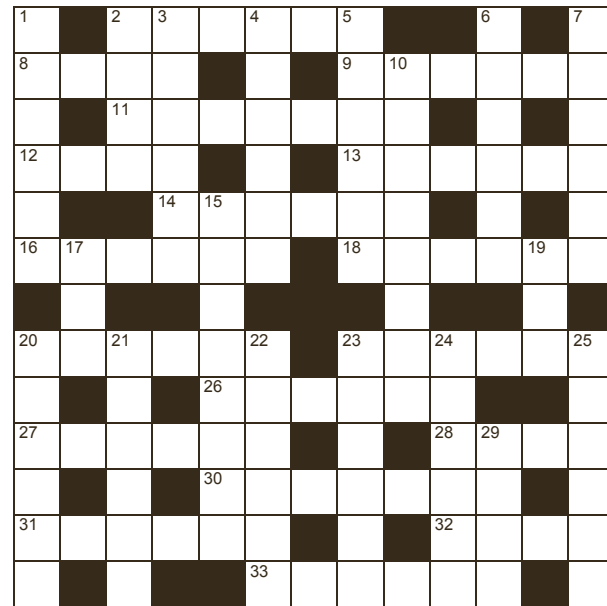


St Hilda's and St. Mark's
Anglican Church
3 Wakelin Rd, Beachlands

SERVICE
Sunday 9:30am

All Welcome

RAYWHITE BEACHLANDS CROSSWORD



Brianne Bignell
021 400 979
brianne.bignell@raywhite.com

RayWhite.

Across

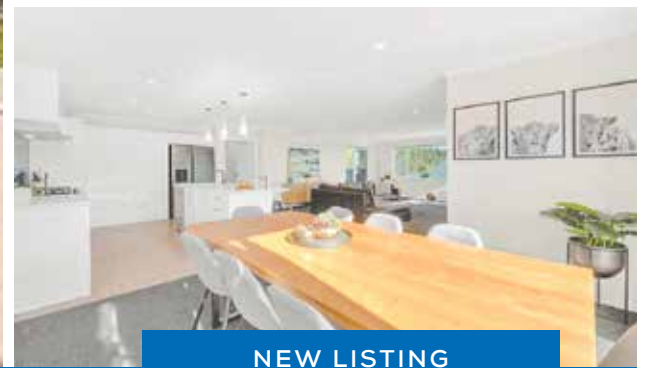
- 2. Skin complaint (6)
- 8. Temperamental female celebrity (inf) (4)
- 9. Riches (6)
- 11. Close of day (7)
- 12. Monster (4)
- 13. Kindle (6)
- 14. Rise (6)
- 16. On-off device (6)
- 18. Wealthy and privileged (6)
- 20. Give cold shoulder (6)
- 23. Persistently annoy (6)
- 26. Frolic (6)
- 27. Chop (6)
- 28. Whitish (4)
- 30. Tolerant (7)
- 31. One who exaggerates discomfort for sympathy or admiration (6)
- 32. Money (4)
- 33. Talk incessantly (6)

Down

- 1. Detestable (6)
- 2. At all times (4)
- 3. Formal proviso (6)
- 4. Ineffectual person (6)
- 5. Canvas shelter (6)
- 6. Joined by treaty (6)
- 7. Protect (6)
- 10. Sand clock (3,5)
- 15. Barely (8)
- 17. Play truant (inf) (3)
- 19. The day before (3)
- 20. Revenue (6)
- 21. Character (6)
- 22. Food establishment (6)
- 23. Dais (6)
- 24. Position (6)
- 25. Musical pattern (6)
- 29. Luminous point in sky (4)

Answers on page 10

BARFOOT & THOMPSON



NEW LISTING

MARAETAI

20 MATARA AVENUE



TENDER
4pm Thursday 18 July (unless sold prior)
barfoot.co.nz/893898

VIEWING
003 Open Homes:
SAT & SUN 2:00 - 2:30pm

ON THE COUNT OF THREE

- Over THREE hundred square metres of floor space (approximately 318m²), big spacious home
- THREE car garaging plus off-street parking with boat parking, 701m² section
- About THREE years old, low maintenance weatherboard home with double glazing
- 4 double bedrooms, 3 luxurious bathrooms, designer kitchen, laundry, 2 separate living areas
- Watch our Special Agents 003 video tour online



SPECIAL AGENTS 003
Ian, Jenny and Nicolette
Jenny 0204 000 2564



Ian Boswell - 003
Ian 027 702 9157
Nicolette 027 702 9157

Council extends timeframe to consider public input on Clevedon's public spaces

Franklin Local Board has advised it will take extra time to consider public submissions on future proposed plans for Clevedon Showgrounds and other public spaces within the village.

Plans to upgrade and alter public spaces within Clevedon village and the showgrounds, to cater for an increased population, closed in early May 2024 with outcomes initially scheduled to be presented to the board in June to guide the next steps and planning.

Auckland Council has advised submitters that Franklin Local Board requires additional time to evaluate the options for each plan and to address the feedback received, particularly from the equestrian community regarding the showgrounds. Equestrian users said their earlier feedback on the plans had not been taken into account before the plans were released for public

consultation.

Outcomes of the public consultation process will now be presented to the Franklin Local Board in July and August 2024.

Auckland Council said there was significant public interest around the proposed plans.

Read online
www.pctimes.co.nz



Classified Ads

BUY/SELL

JEWELLERY WANTED TO BUY

Old gold, rings, broken chains, unwanted jewellery for scrap etc. Paul Taylor Jewellers, Shop C7 Pohutukawa Coast Shopping Center. Ph 536 4200

TO RENT

SPACE TO RENT - 13 Papakura Clevedon Rd above Remax Clevedon

Approx 25 sqm, shared lunchroom & toilet facilities. Nice Views. Currently used as a Bridal Studio. Space would suit a Hairdresser, Beauty Salon or professional. Call Geoff 027 479 7741.

WORK WANTED

CLEANING

Experienced, reliable and efficient. Available for one-off deep cleans, or weekly/fortnightly cleaning. Great rates and friendly team. Phone or text Corbyn's Cleaners 021 217 7436, or find us on Facebook.

RENOVATIONS

Bathrooms, kitchens, toilets - build, tile, glass, flooring, plaster and paint. Start to finish. Exp. builder. Refs avail. Ph: Gary 021 903 020 or 536-6358. Oakes Build Landscape Maintenance. www.oakes.nz.

MOWER AND CHAINSAW REPAIRS

All small engine repairs, mowers, ride-on mowers, chainsaws, weedtrimmers, & chain saw sharpening. No job too small. Free pick-up local area only. Ph: 536 5621 or mob 027 308 7777.

PAINTING/PLASTERING

Interior and exterior quality painting. Refs available. Ph: Gary 021 903 020 or 536 6358.

READY GRASS/ LANDSCAPING

Specialising in ready-grass, seeding, lawn levelling, turf cutting & landscaping. Locally based Ph: Adam on 022 015 2805.

HANDYMAN

You name it... renovations, DVS installation, gardening, retaining, fencing, landscaping, trellis, light building and maintenance work. Ph Gary on 021 903 020 or 536 6358.

BARCLAY MOWING

For all your mowing / gardening needs including lifestyle / large sections. Friendly professional service & great rates. Txt/Call 027 533 1527

CROSSWORD ANSWERS

Across: 2. Eczema, 8. Diva, 9. Wealth, 11. Evening, 12. Ogre, 13. Ignite, 14. Ascent, 16. Switch, 18. Gilded, 20. Ignore, 23. Pester, 26. Cavort, 27. Cutlet, 28. Ashy, 30. Lenient, 31. Martyr, 32. Cash, 33. Yammer.
Down: 1. Odious, 2. Ever, 3. Caveat, 4. Eunuch, 5. Awning, 6. Allied, 7. Shield, 10. Egg timer, 15. Scarcely, 17. Wag, 19. Eve, 20. Income, 21. Nature, 22. Eatery, 23. Podium, 24. Stance, 25. Rhythm, 29. Star.

Professionals & Trades

BOATING & MARINE

Ovlov Marine Pine Harbour 09 536 5249
www.ovlov.co.nz

Sales and Service of outboard motors, inboards, sterndrives and IPS.

Situated in Pine Harbour Marina and mobile we can care for your vessel be it big or small.

Contact the team on 536 5249 or email on phil@ovlov.co.nz for service enquiries and partsph@ovlov.co.nz for spare parts.



BUILDERS

INNOVATE CONSTRUCTION

- NEW BUILD
- RENOVATIONS
- DECKS
- BATHROOMS

FOR ALL YOUR BUILDING NEEDS

Call Justin on: 021 460 011 | justin@innovateconstruction.co.nz
Licensed Building Practitioner | www.innovateconstruction.co.nz

CHIROPRACTOR

CLEVEDON CHIROPRACTIC
LIFE IS MOVEMENT

- Headaches / Migraine • Dizziness / Vertigo • Neck pain / Whiplash • Trapped nerves • Back pain / Sciatica
- Plantar fasciitis • Sports Injuries / Performance & more...

David Owen DC | Registered Chiropractor
ACC Registered . 25 years experience
02102 144 070 | clevedonchiro@gmail.com | www.clevedonchiro.co.nz

DENTAL

Great Smiles. Better Health.

At Anthony Hunt Dental we are proud to have been serving our community since 2011.

Leading the way using the latest techniques and technology, we create great smiles and better health for the whole family.



(09) 292 9071 | smile@ahdental.co.nz
52 Papakura-Clevedon Road
Clevedon
www.ahdental.co.nz

ANTHONY HUNT
Dental
GREAT SMILES • BETTER HEALTH

Professionals & Trades

DENTAL

WHITFORD DENTAL

We are dedicated to your personal well-being through dental health



- Teeth whitening
- All ceramic tooth filling materials using CerecAC omnicaam, 3D technology
- Permanent tooth replacements with dental implants
- For gum health and maintenance call our hygienist Zahraa
- All aspects of general dentistry

FREE DENTISTRY IS AVAILABLE FOR ALL YOUNG ADULTS
Eligible from Year 9 until their 18th birthday. Contact us today to learn more
Evening appointments available
Call us now on 530 8461 or email: info@whitforddental.co.nz

Dentists:
• Dr. Rick Parfitt B.D.S. • Dr. Alex Lindsay B.D.S.
• Dr. Maad Youhana B.D.S.
Hygienist:
• Zahraa Talib B.O.H

09 530 8461
Whitford Village, Whitford



smile dental
giving you one more reason to smile

QUALITY AFFORDABLE FAMILY DENTISTRY

***FREE dental examinations**
*excl. xrays



129 Beachlands Rd, Beachlands, Auckland

www.smiledental.co.nz 09 302 0808



INTEREST-FREE DENTAL PAYMENT PLANS

Book online:
www.marinadentists.co.nz

190 Jack Lachlan Drive, Beachlands
Call us: 09 535 1074

DRAINAGE & EARTHWORKS

DVL Drainage Vision Limited
www.drainagevision.co.nz
Mike 027 593 0326

- Drain Unblocking • CCTV Inspections • Certified Drainlayer
- Vacuum Trucks • Pipe & Cable Locations

ELECTRICIANS

Pohutukawa ELECTRICAL

No job too small - No job too big!
Fast, reliable service.
Qualified lighting designer



PH: 536-4076 **FREE Quotes**
MOB: 021 769 964 www.pohutukawaelectrical.co.nz

Advertise here for \$30 weekly or \$35 fortnightly.

Ph: 021 026 14467 or email advertising@pctimes.co.nz

Professionals & Trades

ELECTRICIANS

Auckland Wide Electrical
Ph 536 6800
Your Local Registered Electricians



- Heat Pump /Aircon Installations
- Switchboard Upgrades & Rewiring
- TV Cabling and Aerial Installations
- New House Wiring and Renovations
- Water pumps • Hot Water
- Oven Repairs • Lighting and Switchgear

www.awe.co.nz • help@awe.co.nz • free quotes
Providing electrical services on the Pohutukawa Coast & throughout Auckland

PUMP SUPPLIES



AUCKLAND ELECTRICAL & PUMPS

- All Electrical Services
- Water Pump & Bore Pump Repairs & Installation
- Residential, Rural & Commercial Services
- New House Wiring/Rewiring & Renovations
- Filter & UV Light Replacement

PHONE: 027 474 1579 | 09 536 4074
admin@aeps.co.nz

TYRES



YOUR TRUE TYRE PROFESSIONAL ON THE COAST

- Friendly Reliable Service
- Locally Owned & Operated
- Over 20 Years Experience
- For ALL Your Tyre Needs

Agricultural, Batteries, Car / Passenger, Earthmover, Mag & Tyre Packages, Puncture Repairs, Truck / Commercial, Wheel Balancing, 4WD / Off Road, 24/7 After-Hours Callout

Call Mike 021 901 034 | sales@tyreguard.co.nz | www.tyreguard.co.nz

ROOFING



ROOFING & SPOUTING NZ LTD
Delivering Quality & Durability

RE-ROOFING | NEW ROOFS | ROOF COATINGS
CONCRETE ROOF TILE SPECIALIST | CONCRETE TILE REPAIRS
GUTTER REPLACEMENT | INTERNAL GUTTER CONVERSION

0800 766 350 | www.roofingnz.co.nz | info@roofingnz.co.nz

VETERINARY

Franklin Vets Beachlands

1/43 Kouka Road,
Pohutukawa Coast Shopping Centre
538 0010 || beachlands@fvs.co.nz

Mon-Fri 8am-6pm
Sat 9am-3pm

www.franklinvets.co.nz

Come meet our local team and tour our Best Practice & Cat Friendly accredited facility



FranklinVets

MEAT SUPPLIER



EST 2000
AUCLAND, NEW ZEALAND

- For all your homekill and hunting processing.
- Vacuum packing standard & delivery available.
- Qualified butchers, expert advice, friendly service.
- Sausages (gluten free available), bacon, salami, biersticks, biltong, smoking and curing.

027 632 8979
admin@meatworx.co.nz
www.meatworx.co.nz

SCAFFOLDING

QUALITY | RELIABLE | WHITFORD BASED | LAYHER SCAFFOLD SYSTEM



DTS WRIGHT
SCAFFOLDING

Contact Dylan 021 239 4276 | dtswrightsc scaffolding@gmail.com

SURVEYOR

SURVEY PLUS
LAND SURVEYING

Your local Pohutukawa Coast Surveyor


admin@surveyplus.co.nz | 020 4 SURVEY (020 4 787839)

TREE SERVICES

CALL NATHAN 021 196 6509

- CHIPPING
- LAND CLEARING
- HEDGE TRIMMING
- TREE PRUNING
- TREE REMOVAL
- STUMP GRINDING

FIND US ON FACEBOOK coastalcutters@hotmail.com




Land Clearing
Tree Maintenance
Tree removal
Stump Grinding
Hedge Care

Phone Doug
021537171 • 09 5378595
info@dstrees.co.nz
www.dstrees.co.nz

POHUTUKAWA COAST VETS

LOCALLY OWNED & OPERATED IN BEACHLANDS

Book an appointment
Ph: 09 320 1472
Or book online
www.pcvets.co.nz

reception@pcvets.co.nz | 43 Wakelin Rd, Beachlands



WATER




Coastal
PUREWATER LTD

The highest quality water for all your household, property and commercial needs

Ask for our pure water by name

Manukau Quarries LP
885 Whitford-Maraetai Road, Beachlands | 09 2630220



FRANKLIN WATER
MAKING WATER WORK

Ph 0800 826 525
sales@franklinwater.co.nz
www.franklinwater.co.nz

Supply, Installation & Servicing of:

- Water Pumps, Filter Systems & UV Light Systems
- Tank Cleaning
- Replacement Filters
- Loan Pumps available on ALL House Pump Servicing & Repairs

Bores / Pumps / Tank Cleaning / Filtration Systems
Solar Pump Supply & Installation

WARDROBE SUPPLIER



wardrobeworld
get organised for life

Wardrobes | Melteca & Wire Shelving | Sliding Doors
Linen Closets | Garage Storage | Free Measure & Quote

Sean: 0273 433 866 | sean@wardrobeworld.co.nz

MECHANICAL REPAIRS


MARAETAI AUTOMOTIVE

All Makes & Models | All Types of Repairs
Petrol - Diesel - European Vehicles - Loan Cars

- Servicing • WOF • Brakes • Clutches • Wheel Alignments
- Tyres • Transmission Services • Batteries • Welding
- Cambelts • CV Joints • Auto Electrical Repairs

131 Maraetai Drive, Maraetai
Ph: 536 6542

ALL WORK GUARANTEED
HOURS: Mon - Fri: 8am-5pm




POHUTUKAWA MOTORS.co.nz

AA APPROVED REPAIRER,
AA BATTERY STOCKIST
MTA ASSURED

- Motoring
- Battery Stockist
- Roadservice Contractor

WE ARE YOUR LOCAL, HONEST AND TRUSTED AUTOMOTIVE REPAIRER. POP DOWN AND SEE US. WE'LL LOOK AFTER YOU AND YOUR VEHICLE.

- ALL MECHANICAL REPAIRS
- WOF
- BRAKES
- TYRES
- AUTOMOTIVE AIRCON SERVICING

57 THIRD VIEW AVENUE, BEACHLANDS
09 536 6664

MORTGAGE ADVISERS

Loan Market

New Zealand's widest range of lenders, in one place.

Toni Dawson, Mortgage Adviser
027 646 9269
toni.dawson@loanmarket.co.nz
NZ Financial Services Group Limited (FSP286965)



Find out more at adviser.loanmarket.co.nz/toni-dawson



JESSEP CONTRACTING
TREE CARE & REMOVALS

Your Local Arborists
Your problem is our specialty!

- Tree Care, pruning and removals
- Shelterbelt removals and chipping
- Palm cleaning & hedge trimming
- Stump grinding
- Small Hiab Lift & Shifts

CALL PHIL FOR A FREE QUOTE
022 607 4455

CHECK OUT
jessepcontracting.co.nz



AUCTION

15 Alexander Avenue, Maraetai

Nestled in a prime location, this remarkable property beckons you to seize the day and secure your slice of seaside paradise.

- 4 bedrooms and 2 bathrooms, offering ample space for growing families to thrive and create cherished memories.
- Open-plan kitchen, living and dining area seamlessly blend together.
- Expansive deck and conservatory, where panoramic sea views stretch out before you.
- If you're seeking a new project, this home offers boundless potential.

rwbeachlands.co.nz/BCH30823

Lighthouse Real Estate Ltd Licensed (REAA 2008)

4 1 2 1 2 809

Auction

The Shed @ Ray White Beachlands
6:00 pm 1 July 2024
(Unless Sold Prior)

View

Saturday & Sunday
1:30 - 2:00 pm



Brianne Bignell

021 400 979
brianne.bignell@raywhite.com

ALAN WHITE
ELITE
PERFORMER 22-23



Paula Kirkman

021 0290 8007
paula.kirkman@raywhite.com

WHY WAIT?



FOR SALE

VUE Apartments - 45 Kouka Road, Beachlands

Stylish Homes Under \$1m!

1, 2 & 3 Bedroom Apartments available in the heart of Beachlands.

These apartment-style homes are designed to offer stylish, comfortable and convenient living. Each home includes a light-filled open-plan living space with an entertainer's kitchen, as well as a generous master bedroom. North-facing balconies provide a sunny spot to relax and enjoy the panoramic views out to the Hauraki Gulf and beyond.

rwbeachlands.co.nz/BCH30861

Lighthouse Real Estate Ltd Licensed (REAA 2008)

1 | 2 | 3 1 1 | 2 1 1

Asking Price

1 Bed | 1 Bath - from \$649,000
2 Bed | 1 Bath - from \$759,000
3 Bed | 2 Bath - from \$879,000

View

Saturday & Sunday
11:15 - 11:45 am



Team Brie

021 400 979

ALAN WHITE
ELITE
PERFORMER 22-23

WHY WAIT?



FOR SALE

1/20 Unga Place, Beachlands

If you're searching for an affordable and spacious property with cash flow potential, your search ends here:

- Built by Mike Greer Homes - combines style, convenience and coastal charm.
- Two generously sized bedrooms and a modern bathroom, finished with high-quality fixtures.
- Enjoy two sun bathed patio areas, perfect for al fresco dining or enjoying your morning coffee.

Ideal for first home buyers, down-sizers and investors alike.

rwbeachlands.co.nz/BCH30979

Lighthouse Real Estate Ltd Licensed (REAA 2008)



2 1

For Sale
\$749,000

View
Saturday & Sunday
1:30 - 2:00 pm



Brianne Bignell
021 400 979
brianne.bignell@raywhite.com

ALAN WHITE
ELITE
PERFORMER 22-23



Paula Kirkman
021 0290 8007
paula.kirkman@raywhite.com

WHY WAIT?



FOR SALE

15 Gateway Avenue, Beachlands

Charming Lock-Up and Leave - Discover the perfect haven for downsizers, investors or anyone yearning for a sleek, low-maintenance lifestyle. This two bedroom, two bathroom townhouse epitomizes comfort and convenience.

Situated directly across from the picturesque Pine Harbour Marina, you'll enjoy easy access to beautiful restaurants and boating activities.

Our vendors are heading overseas, so seize the opportunity to own a stylish and functional home.

rwbeachlands.co.nz/BCH30941

Lighthouse Real Estate Ltd Licensed (REAA 2008)



2 2 1 104

For Sale
\$749,000

View
Saturday & Sunday
12:45 - 1:15 pm



Paula Kirkman
021 0290 8007
paula.kirkman@raywhite.com



Brianne Bignell
021 400 979
brianne.bignell@raywhite.com

ALAN WHITE
ELITE
PERFORMER 22-23

WHY WAIT?